

# ANCAP Safety Rating

## SKODA RAPID (2014 – July 2020)

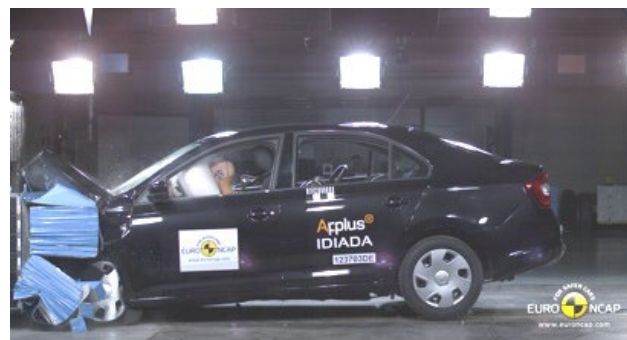


**ANCAP**  
Safety ★★★★★

### Test Vehicle(s).

Variant:	Skoda Rapid 1.2 TSI 'Ambition' LHD
Kerb Mass:	1090 kg
Built:	2012
Engine:	1.2
Category:	Small Car
Variant Applicability*:	4 cyl petrol only

Tested by Euro NCAP.



Frontal offset test at 64 km/h (Euro NCAP)

	ESC	Frontal Offset	Side Impact	Pole	Whiplash	Pedestrian	Seat Belt Reminders	Overall Score	ANCAP Safety Rating
Frontal + Side + Head	Standard	<b>15.37</b> (out of 16)	<b>16.00</b> (out of 16)	<b>2</b> (out of 2)	<b>ACCEPTABLE</b>	<b>ACCEPTABLE</b>	<b>2</b> (out of 3)	<b>35.37</b> (out of 37)	<b>★★★★★</b>

The tested model of Skoda Rapid was introduced in Australia in 2014. This ANCAP safety rating applies to all variants with a 4 cylinder petrol engine.

Dual frontal, side chest and side head airbags (curtains) are standard. Antilock brakes (ABS), electronic brake distribution (EBD) and electronic stability control (ESC) are also standard. Advanced seat belt reminders are fitted to both front seats.

In the frontal offset crash test, driver chest and leg protection was acceptable. In the side impact crash test, driver protection was good. Head protection in the side pole test was good.

## OCCUPANT PROTECTION

### Frontal Offset Test.

Each body region is scored out of 4 points

Head / neck:	4.00 points
Chest:	3.41 points
Upper legs:	4.00 points
Lower legs:	3.96 points

The passenger compartment held its shape well in the frontal offset test. Pedal and steering wheel displacements were well controlled. Driver and passenger contact with the airbags was stable. All doors remained closed during the crash.

### Side Impact Test.

Each body region is scored out of 4 points

Head:	4.00 points
Chest:	4.00 points
Abdomen:	4.00 points
Pelvis:	4.00 points

Good protection was provided for the driver in the side impact test. The side airbags performed well.

### Pole Test.

Scored out of 2 points

The vehicle was eligible for a side pole test because it has side curtain airbags. The vehicle scored the maximum 2 points for head protection in this test.

### Whiplash Protection Test.

Whiplash protection is assessed to the RCAR Protocol

Geometric test:	Good
Dynamic test:	Acceptable
Overall whiplash rating:	Acceptable

### Injury Outcomes.

Frontal Offset  
Driver

Passenger

Side Impact & Pole  
Driver



Whiplash



# ANCAP Safety Rating

## SKODA RAPID (2014 – July 2020)



### PEDESTRIAN PROTECTION

#### Pedestrian Test.

**ACCEPTABLE** - Scored 24.7 out of 36 points

Child head impacts:	11.64 points
Adult head impacts:	5.00 points
Upper leg impacts:	2.05 points
Lower leg impacts:	6.00 points

The bumper provided good protection for pedestrians' legs and scored maximum points. In most areas where a child's head might strike the bonnet, good protection was provided but the protection was predominantly poor in those areas likely to be struck by an adult's head. Tested by Euro NCAP v5.3.



Skoda Rapid

### SAFETY FEATURES

These specifications are subject to change. Please check with manufacturer for the latest specifications. For a description of these safety features and safety rating requirements see the ANCAP Rating Road Map.

Safety Assist Technology (SAT)	Availability
Front airbag - driver	S
Front airbag - passenger	S
Side airbags (chest protection) - front seats	S
Side airbags (head protection) - front seats	S
Side airbags (head protection) - 2nd row seats	S
Knee airbag - driver	X
Three-point seat belts for all forward facing seats	S
Seat belt pretensioners (front / rear outboard)	S / X
Intelligent seat belt reminder - driver	S
Intelligent seat belt reminder - front passenger	S
Intelligent seat belt reminder - 2nd row seats	X
Head restraints for all seats	S
Antilock brakes (ABS)	S
Electronic brake distribution (EBD)	S
Emergency brake assist (EBA)	S
Electronic stability control (ESC)	S
Adaptive cruise control (ACC)	X
Autonomous emergency braking (AEB)	X
Lane support system	X
Daytime running lights	S
Hill launch assist	S
Manual speed alarm	S
Tyre pressure monitoring	S
Automatic headlights	O
Reversing collision avoidance	O

S = Standard on all variants.  
O = Optional on base variant. May be standard on higher variants.  
V = Not available on base variant but standard or optional on higher variants.  
X = Not available on any variant.

## INJURY MEASUREMENTS

Body Region	Frontal offset test at 64 km/h (v5.2)		Side impact test at 50 km/h (v5.2)
	Driver	Passenger	Driver
<b>Head</b>			
HIC	245.00	271.00	41.00
Acceleration (g for 3ms)	38.60	38.50	25.70
<b>Neck</b>			
Shear (kN)	0.40	0.44	-
Tension (kN)	1.26	0.95	-
Extension (Nm)	8.30	7.50	-
<b>Chest</b>			
Acceleration (g for 3ms)	-	-	-
Compression (mm)	26.14	21.43	19.91
Viscous criterion (m/s)	0.12	0.06	0.12
<b>Abdomen</b>			
Force (kN)	-	-	0.87
<b>Pelvis</b>			
Force (kN)	-	-	1.88
<b>Upper legs</b>			
Femur force left (kN)	0.32	0.80	
Femur force right (kN)	0.24	0.90	
Knee displacement left (mm)	0.10	1.70	
Knee displacement right (mm)	0.70	2.40	
<b>Lower legs</b>			
Force left (kN)	1.22	1.98	
Force right (kN)	1.22	1.52	
Index (upper / lower) left	0.36 / 0.41	0.26 / 0.20	
Index (upper / lower) right	0.32 / 0.18	0.25 / 0.14	

## INTRUSION MEASUREMENTS

### Steering Column

Forwards:	19mm
Upwards:	8mm
Sideways:	7mm

### Pedals

Brake (rearwards):	27mm
Brake (upwards):	11mm

A-Pillar (rearwards):	3mm
-----------------------	-----

## SCORE DEDUCTIONS

### Deductions from frontal offset test scores

No deductions for frontal offset test.

### Deductions from side impact test score

No deductions for side impact test.

### Deductions from pole test score

No deductions for pole test.

\* For information about the application of ANCAP ratings to model variants see the ANCAP Variant Policy. In brief, ratings do not automatically extend to variants that have different body styles, engine configurations, driven wheels or occupant restraint systems (e.g. fewer airbags). In these cases ANCAP considers technical evidence submitted by manufacturers before deciding on extending a rating to additional variants of a model.

^ Refer ANCAP Rating Road Map ([www.ancap.com.au/media](http://www.ancap.com.au/media)).

DOCUMENT REF: RAPID14  
CREATED / REVISED: 5/05/2014