

ANCAP Safety Rating

HONDA CR-V (July 2017 - onwards)



Honda CR-V

This ANCAP safety rating applies to:

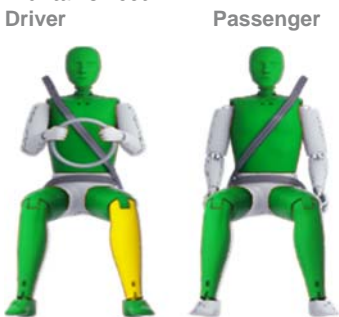
Make / Model	Honda CR-V
Year Range	July 2017 - onwards
Variant(s)*	All variants
Vehicle Type	Medium SUV

The tested model of Honda CR-V was introduced in Australia and New Zealand in July 2017. This ANCAP safety rating is based on crash tests conducted by ANCAP and ASEAN NCAP and applies to all CR-V variants (2WD and 4WD; 5 seat and 7 seat models).

Dual frontal, side chest and side head-protecting (curtain) airbags are standard. Autonomous emergency braking (AEB) and lane support systems (LSS) are available on some variants. A full list of safety features and technologies can be viewed within the *Safety Features & Technologies* table on page 2 of this report.

Injury Outcomes.

Frontal Offset



Side Impact & Pole#



Whiplash Protection



	GOOD
	ACCEPTABLE
	MARGINAL
	POOR

Head protection only.

Test Results Summary.

Airbags	Dual Frontal, Side, Head
Frontal Offset Test	14.76 (out of 16)
Side Impact Test	16.00 (out of 16)
Pole Test	2.00 (out of 2)
Whiplash Protection	Good
Pedestrian Protection	Acceptable
ESC	Standard
Seat Belt Reminders	3.00 (out of 3)
Overall Score	35.76 (out of 37)
ANCAP Safety Rating	★★★★★
Rating Year^	2017

Occupant Protection.

Frontal Offset Test

Each body region is scored out of 4 points

Head / neck:	4.00 points
Chest:	4.00 points
Upper legs:	4.00 points
Lower legs:	2.76 points

In the frontal offset test, protection of the driver and passenger was good for all critical body regions except the driver lower leg which was acceptable. Pedal and steering wheel displacements were well controlled. All doors remained closed during the crash. After the crash all doors could be opened with normal effort.

Side Impact Test

Each body region is scored out of 4 points

Head:	4.00 points
Chest:	4.00 points
Abdomen:	4.00 points
Pelvis:	4.00 points

Good protection was provided for the driver in the side impact test.

Pole Test

Scored out of 2 points

Score:	2.00 points
--------	-------------

The vehicle has side curtain airbags so was eligible for a side pole test. The vehicle scored the maximum 2 points for head protection in this test.

Whiplash Protection Test

Whiplash protection is assessed to the RCAR Protocol

Geometric test:	Good
Dynamic test:	Good
Overall whiplash rating:	Good

ANCAP Safety Rating

HONDA CR-V (July 2017 - onwards)



Pedestrian Protection.

Pedestrian Test

Scored out of 36 points

Adult & child head impacts: 15.34 points
 Upper leg impacts: 4.70 points
 Lower leg impacts: 5.53 points

This vehicle scored 25.57 out of 36 points (Acceptable). Performance was mostly acceptable for head impacts on the bonnet. The upper leg and full leg test areas of the bumper and grille were acceptable or good. (v8.3)

Child and adult head impact



Adult leg impact (upper and full legforms)



Score Deductions.

Deductions from frontal offset test scores

Head / neck: No deductions
 Chest: No deductions
 Upper legs: No deductions
 Lower legs: No deductions
 Overall: No deductions

Deductions from side impact test score

Head / neck: No deductions
 Chest: No deductions
 Abdomen: No deductions
 Pelvis: No deductions
 Overall: No deductions

Deductions from pole test score

Head: No deductions

Safety Features & Technologies.

Descriptions of each of these safety features and safety assist technologies (SAT) and detail on fitting requirements for each star rating level can be found at ancap.com.au.

Safety Feature / Safety Assist Technology	Availability
Seat belts (three-point, lap/sash) for all forward-facing seats	S
Seat belt pretensioners (front)	S
Seat belt pretensioners (rear outboard)	X
Intelligent seat belt reminder (driver)	S
Intelligent seat belt reminder (front passenger)	S
Intelligent seat belt reminder (2 nd row seats)	S
Intelligent seat belt reminder (3 rd row seats)	S*
Airbag - Frontal (driver)	S
Airbag - Frontal (passenger)	S
Airbag - Side, chest protection (front seats)	S
Airbag - Side, chest protection (2 nd row seats)	X
Airbag - Side, head protection (front seats)	S
Airbag - Side, head protection (2 nd row seats)	S
Airbag - Side, head protection (3 rd row seats)	S*
Airbag - Knee (driver)	X
Airbag - Knee (front passenger)	X
Head restraints for all seats	S
Adaptive cruise control (ACC)	V
Antilock braking system (ABS)	S
Autonomous emergency braking (AEB)	
- City	V
- Interurban	V
- Vulnerable road user	V
Automatic headlights	V (S in NZ)
Automatic high beam	V
Blind spot monitoring (BSM)	S
Electronic brakeforce distribution (EBD)	S
Electronic stability control (ESC)	S
Emergency brake assist (EBA)	S
Emergency stop signal (ESS)	S
Fatigue reminder	S
Lane support system (LSS)	V
Daytime running lights (DRL)	S
Hill launch assist	S
Reversing collision avoidance	S
Speed assistance - automatic / intelligent speed limiting (ISA)	X
Speed assistance - manual speed limiting	S
Speed assistance - speed sign recognition & warning	X
Tyre pressure monitoring system (TPMS)	S

S = Standard on all variants.
 O = Optional on base variant. May be standard on higher variants.
 V = Not available on base variant but standard or optional on higher variants.
 X = Not available on any variant.
 E = Available in Europe but not available on any Australasian variant.
 * = Where fitted.

These specifications are subject to change. Please check with the manufacturer for the latest specifications.

ANCAP Safety Rating

HONDA CR-V (July 2017 - onwards)



Injury Values & Measurements.

Body Region	Frontal offset test at 64 km/h (v5.1)		Side impact test at 50 km/h (v5.1)
	Driver	Passenger	Driver
Head			
HIC	315	300	25
Acceleration (g for 3ms)	41.36	43.72	16.90
Neck			
Shear (kN)	0.36	0.54	-
Tension (kN)	0.77	1.11	-
Extension (Nm)	7.91	9.55	-
Chest			
Acceleration (g for 3ms)	-	-	-
Compression (mm)	21.62	19.50	7.70
Viscous criterion (m/s)	0.07	0.04	0.02
Abdomen			
Force (kN)	-	-	0.23
Pelvis			
Force (kN)	-	-	0.76
Upper legs			
Femur force left (kN)	0.19	0.20	
Femur force right (kN)	0.02	0.26	
Knee displacement left (mm)	0.00	0.88	
Knee displacement right (mm)	0.74	0.48	
Lower legs			
Force left (kN)	1.80	1.62	
Force right (kN)	1.29	1.92	
Index (upper / lower) left	0.53 / 0.68	0.22 / 0.17	
Index (upper / lower) right	0.37 / 0.22	0.36 / 0.17	
Intrusion Measurements*			
Steering column			
Forward (mm)	28		
Upward (mm)	12		
Sideways (mm)	1		
Pedals			
Brake - rearward (mm)	44		
Brake - upward (mm)	29		
A-Pillar			
Rearward (mm)	2		

+ Steering column and pedal movements are measured relative to the driver's seat.

* **Model Variants:** ANCAP safety ratings do not automatically extend to variants that have different body styles, engine configurations, driven wheels or occupant restraint systems (e.g. fewer airbags). In these cases, ANCAP considers technical evidence submitted by manufacturers before deciding on extending a rating to additional variants of a model. For further information about the application of ANCAP safety ratings to model variants, see the ANCAP Variant Policy.

^ **Rating Year:** The Rating Year denotes the year requirements against which a vehicle has been assessed. The Rating Year is determined by ANCAP and may be based on the year in which a new vehicle model is first launched into the Australian and/or New Zealand markets; the year in which the vehicle was tested (if tested by Euro NCAP); or, for vehicles which hold an existing ANCAP safety rating, the year in which the rating was updated (or earlier applicable year).

Assessment Details.

Tested Make / Model	CR-V EL (ASEAN NCAP test specification) CR-V VTi-LX (ANCAP test specification)
Tested Vehicle(s) Built	2017
Tested Body Type	Wagon
Tested Vehicle Kerb Weight	1674 kg
Tested Vehicle Engine	2.4 litre petrol
Tested By	ANCAP & ASEAN NCAP
Assessed By	ANCAP
Document Reference	CRV_17
Document Created / Revised	25 October 2017
Rating Published	October 2017
Rating Updated	n/a



Frontal offset test at 64km/h