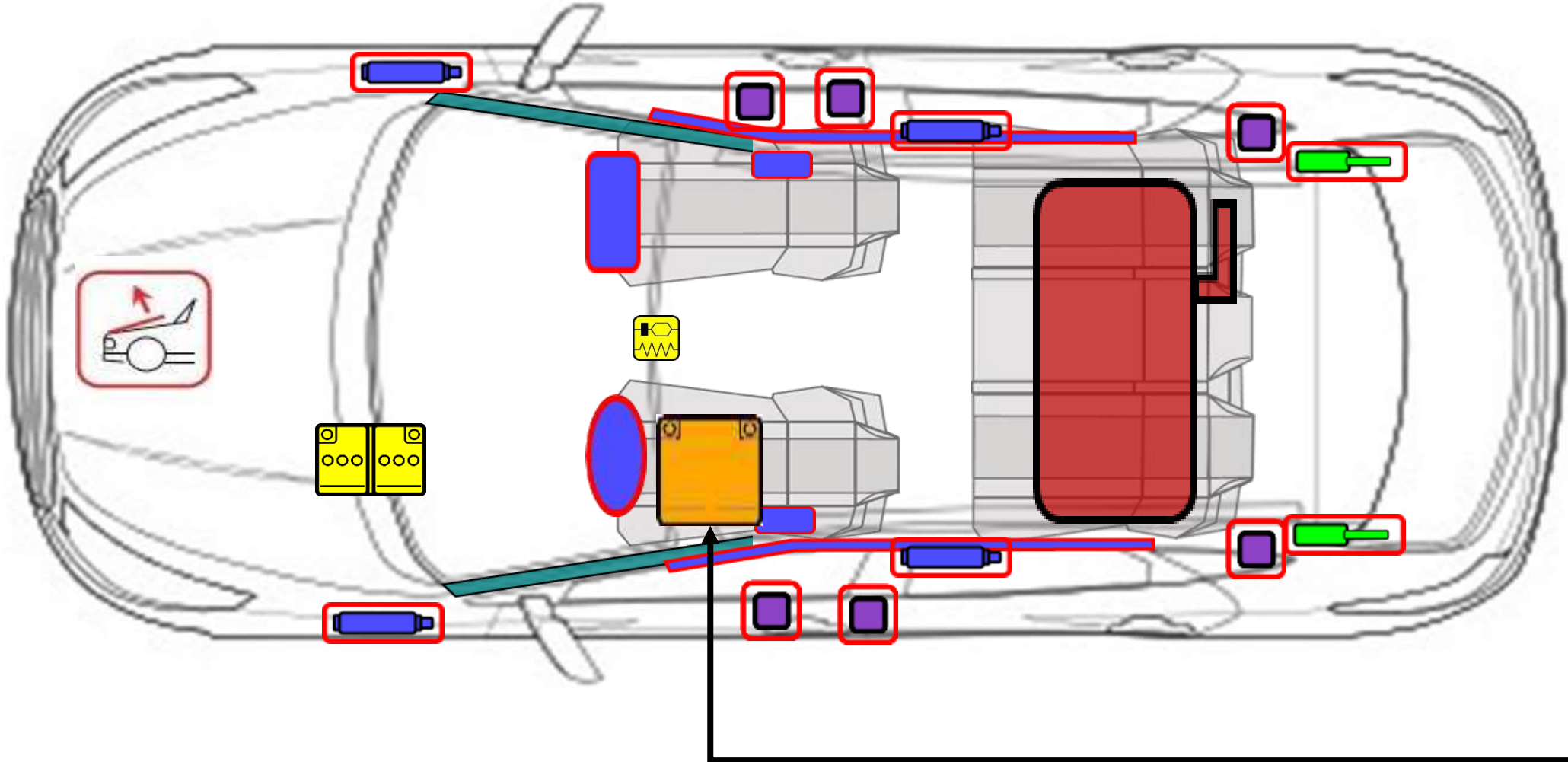


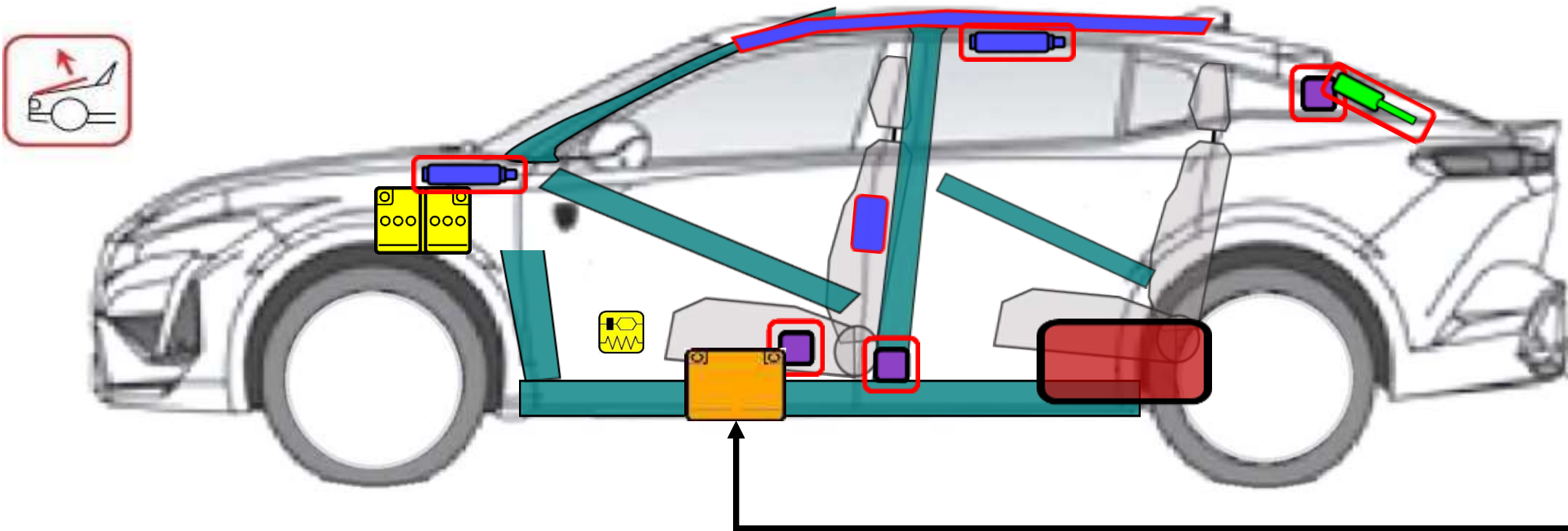


Peugeot 408 Hybrid

5 doors/ 5 seats/ SUV
MHEV (03/2024 ->)



48V / 0.9
kWh
Li-ion



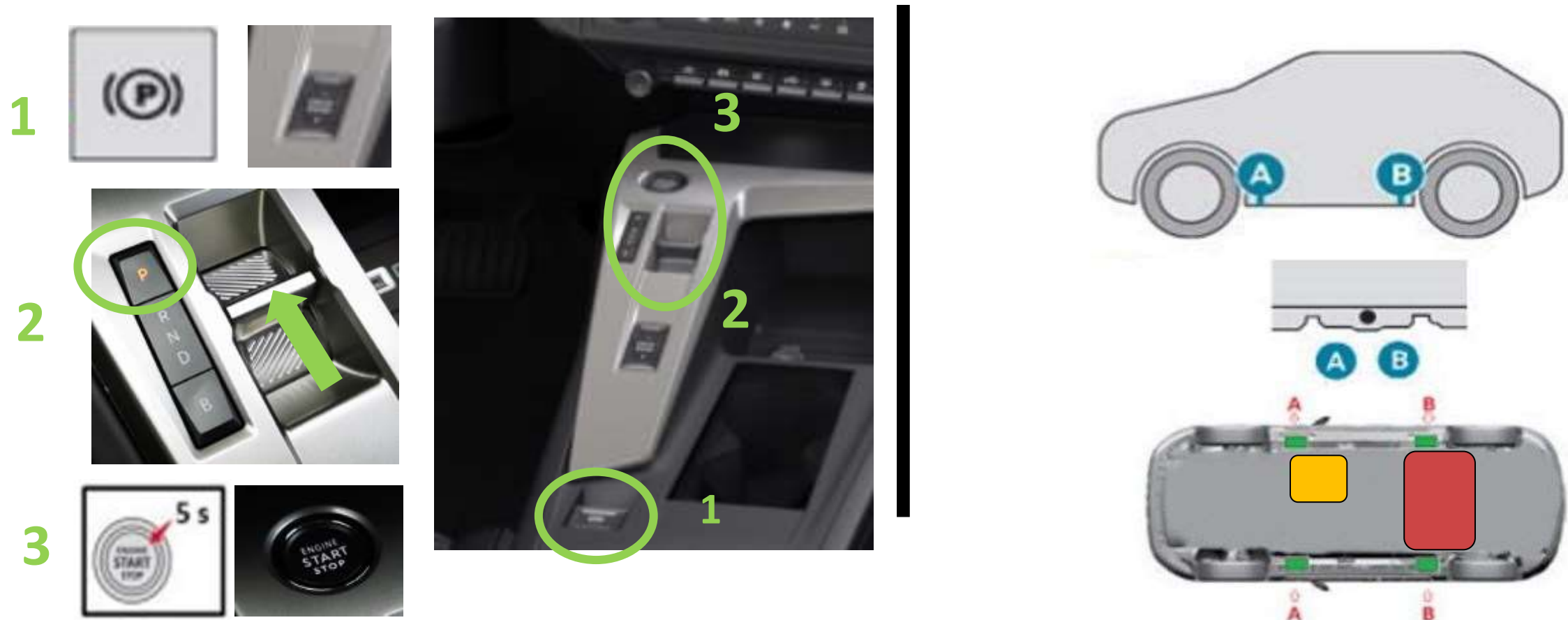
	Airbag		Stored gas inflator		Seat belt pretensioner		SRS control unit		Pedestrian protection active system
			Gas strut / Preloaded spring		High strength zone				
	Battery low voltage								
	Battery pack, high-voltage		High voltage power cable						
					Fuel tank content gasoline/ethanol				

1. Identification / recognition



2. Immobilisation / stabilisation / lifting

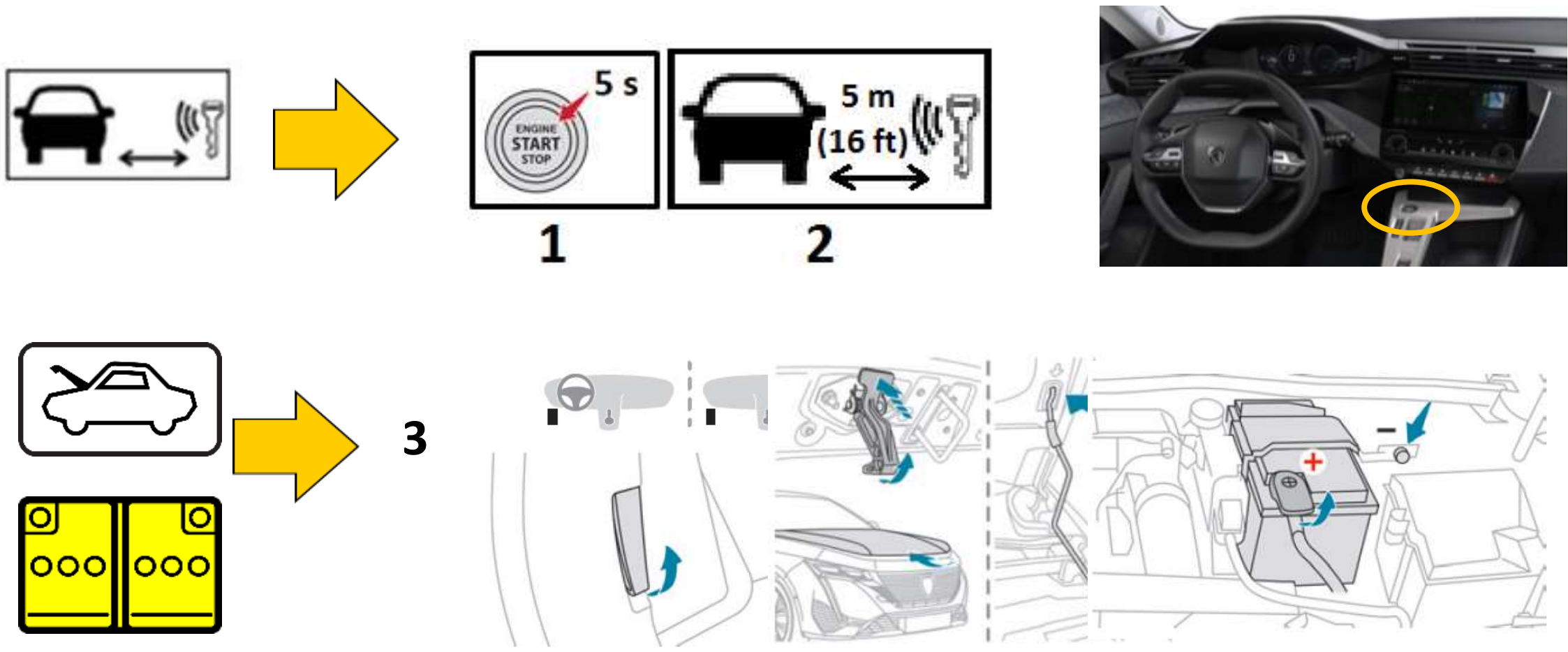
Immobility



Do not place cribbing such as wooden blocks or rescue air lifting bags under the fuel system or high voltage power cables. Doing so may result in fuel leaks, fire, or electric shock.

3. Disable direct hazards / safety regulations

Main disabling method



4. Access to the occupants

(serial production)

(optional product)

Glass types

Toughened glass

Seat adjustment



Steering column adjustment



5. Stored energy / liquids / gases / solids

	12V	
	48V Li-ion 0.9 kWh	
	1234 YF	
	52L	

when coolant leaks from the battery pack, it can become unstable with risk of thermal runaway. Check battery pack temperature with thermal imaging camera.

6. In case of fire

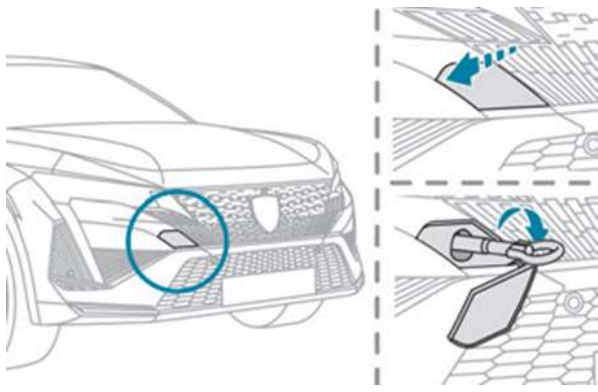
Use large amount of water

RE-IGNITION POSSIBLE !

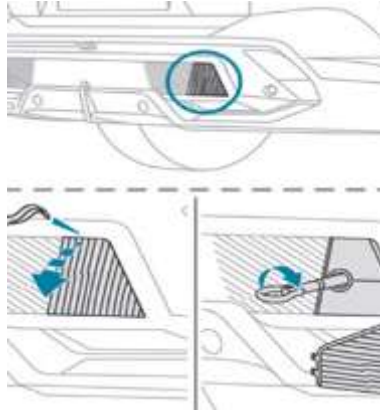
	ID N°	Version N°	Version date	Page
	01365_24_00273	01	11/2024	3/4

8. Towing / transportation / storage

Location front hook



Location rear hook



STORE AT SAFE DISTANCE FROM OTHER VEHICLES !

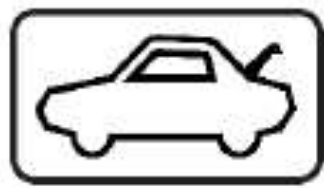
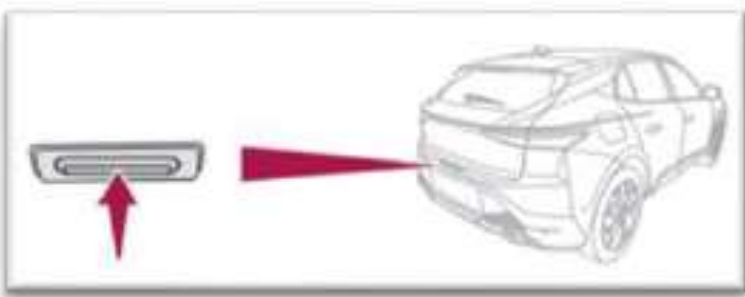


RE-IGNITION POSSIBLE !

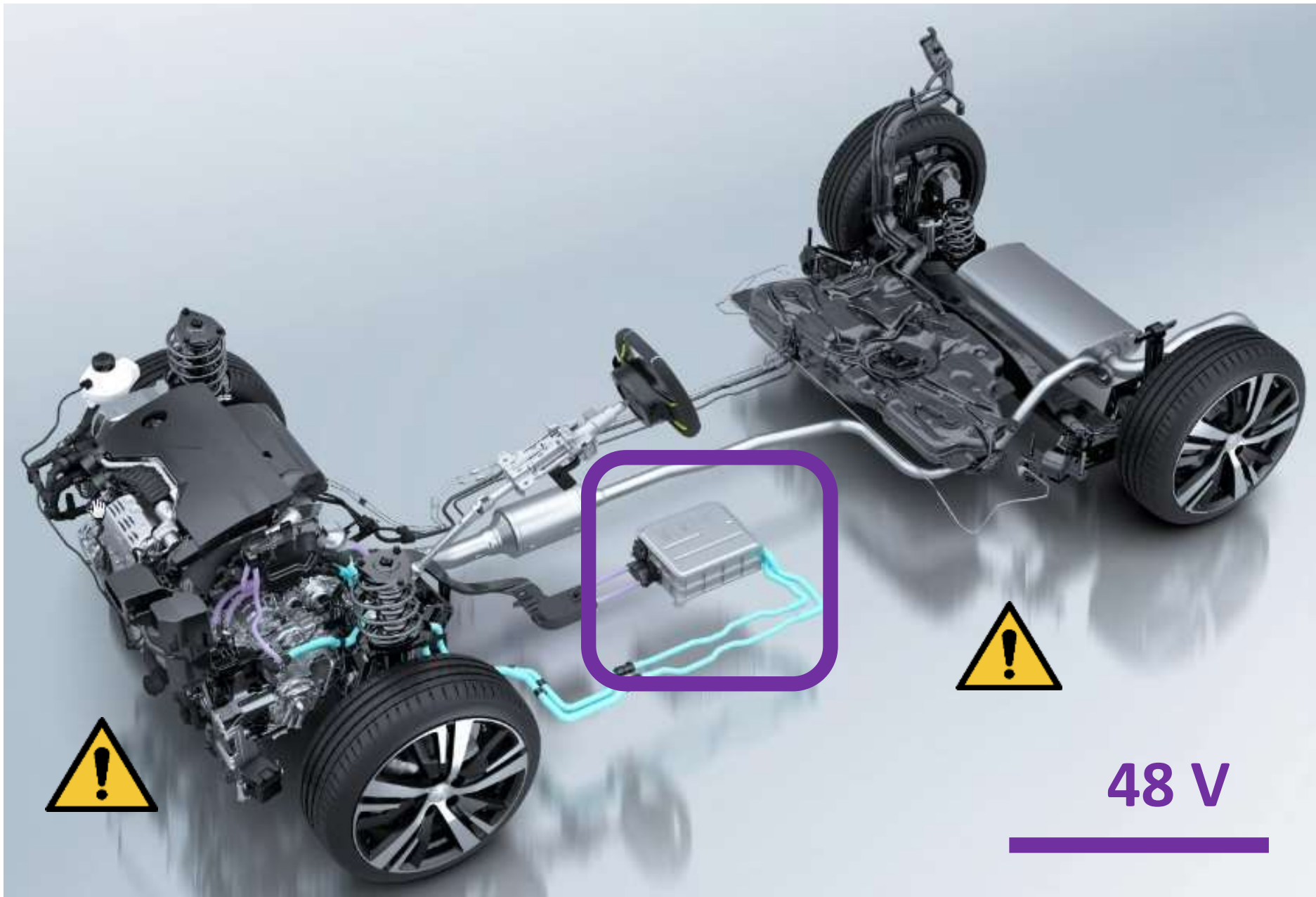
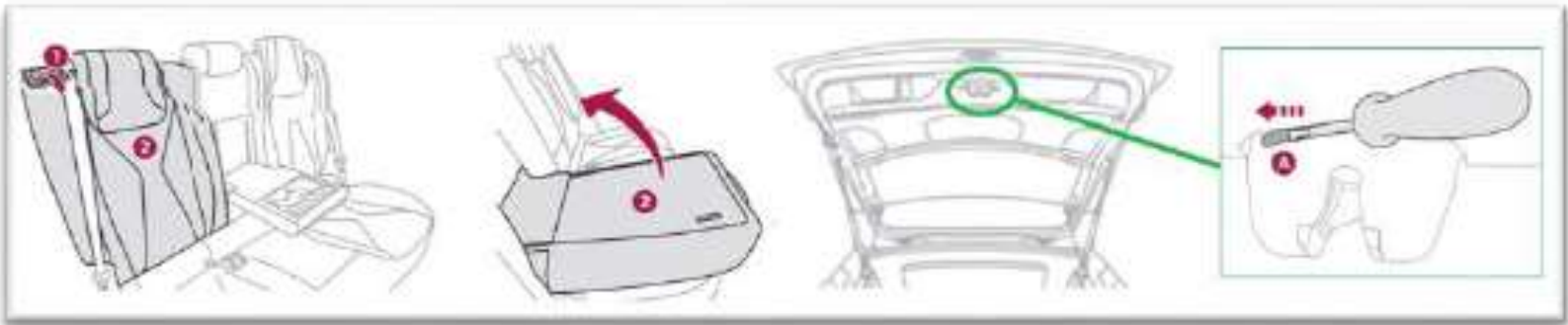
9. Important additional information



12V



1XV



10. Explanation of pictograms used

	Remove smart key		Flammable
	General warning sign		Hazardous to the human health
	Vehicle on fuel of liquid group 2		Explosive