

# ANCAP Safety Rating

## JEEP COMPASS (July 2021 - onwards)



Jeep Compass

### This ANCAP safety rating applies to:

Make / Model	Jeep Compass
Year Range	July 2021 - onwards
Variant(s)*	All variants
Vehicle Type	Small SUV

The tested model of Jeep Compass was first introduced in Australia and New Zealand in December 2017. This ANCAP safety rating applies to all variants built from April 2021 (on sale from July 2021) following a specification update for MY21 vehicles.

Dual frontal, side chest and side head-protecting (curtain) airbags are standard. Autonomous emergency braking (AEB City, Interurban and Vulnerable Road User) and lane support systems (LSS) are standard on all variants. Speed sign recognition and warning is also standard on all variants. A full list of safety features and technologies can be viewed within the *Safety Features & Technologies* table on page 2 of this report.

### Injury Outcomes.

#### Frontal Offset Driver



#### Passenger



#### Side Impact & Pole# Driver



#### Whiplash Protection

##### Driver



	GOOD
	ACCEPTABLE
	MARGINAL
	POOR

# Head protection only.

### Test Results Summary.

Airbags	Dual Frontal, Side, Head
Frontal Offset Test	14.93 (out of 16)
Side Impact Test	16.00 (out of 16)
Pole Test	2.00 (out of 2)
Whiplash Protection	Good
Pedestrian Protection	Good
ESC	Standard
Seat Belt Reminders	3.00 (out of 3)
Overall Score	35.93 (out of 37)
ANCAP Safety Rating	★★★★★
Rating Year <sup>^</sup>	2017

### Occupant Protection.

#### Frontal Offset Test

Each body region is scored out of 4 points

Head / neck:	4.00 points
Chest:	3.22 points
Upper legs:	4.00 points
Lower legs:	3.71 points

In the frontal offset test, protection for both the driver and passenger head and neck was rated as 'Good' while the chest and legs were rated 'Acceptable'. The passenger compartment held its shape well in the frontal offset test. Pedal and steering wheel displacements were well controlled. All doors remained closed during the crash.

#### Side Impact Test

Each body region is scored out of 4 points

Head:	4.00 points
Chest:	4.00 points
Abdomen:	4.00 points
Pelvis:	4.00 points

Good protection was provided for the driver in the side impact test.

#### Pole Test

Scored out of 2 points

Score:	2.00 points
--------	-------------

The vehicle has side curtain airbags so was eligible for a side pole test. The vehicle scored the maximum 2 points for head protection in this test.

#### Whiplash Protection Test

Whiplash protection is assessed to the RCAR Protocol

Geometric test:	Good
Dynamic test:	Good
Overall whiplash rating:	Good

### Pedestrian Protection.

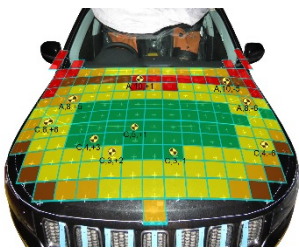
#### Pedestrian Test

Scored out of 36 points

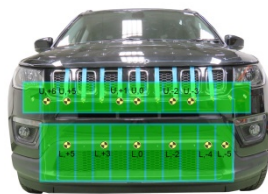
Adult & child head impacts: 17.01 points  
 Upper leg impacts: 6.00 points  
 Lower leg impacts: 6.00 points

This vehicle scored 29.01 out of 36 points. The bonnet provided predominantly 'Good' or 'Acceptable' protection to the head of a struck pedestrian with some 'Poor' results recorded at the base of the windscreen and on the windscreen pillars. The bumper scored maximum points, with 'Good' protection for pedestrians' legs. (v8.3)

Child and adult head impact



Adult leg impact (upper and full legforms)



### Score Deductions.

#### Deductions from frontal offset test scores

Head / neck: No deductions  
 Chest: No deductions  
 Upper legs: No deductions  
 Lower legs: No deductions  
 Overall: No deductions

#### Deductions from side impact test score

Head / neck: No deductions  
 Chest: No deductions  
 Abdomen: No deductions  
 Pelvis: No deductions  
 Overall: No deductions

#### Deductions from pole test score

Head: No deductions

### Safety Features & Technologies.

Descriptions of each of these safety features and safety assist technologies (SAT) and detail on fitting requirements for each star rating level can be found at [ancap.com.au](http://ancap.com.au).

Safety Feature / Safety Assist Technology	Availability
Seat belts (three-point, lap/sash) for all forward-facing seats	S
Seat belt pretensioners (front)	S
Seat belt pretensioners (rear outboard)	S
Intelligent seat belt reminder (driver)	S
Intelligent seat belt reminder (front passenger)	S
Intelligent seat belt reminder (2 <sup>nd</sup> row seats)	S
Airbag - Frontal (driver)	S
Airbag - Frontal (passenger)	S
Airbag - Side, chest protection (front seats)	S
Airbag - Side, chest protection (2 <sup>nd</sup> row seats)	X
Airbag - Side, head protection (front seats)	S
Airbag - Side, head protection (2 <sup>nd</sup> row seats)	S
Airbag - Knee (driver)	X
Airbag - Knee (front passenger)	X
Head restraints for all seats	S
Adaptive cruise control (ACC)	O
Antilock braking system (ABS)	S
Autonomous emergency braking (AEB)	
- City	S
- Interurban	S
- Vulnerable road user	S
Automatic headlights	S
Automatic high beam	S
Blind spot monitoring (BSM)	S
Electronic brakeforce distribution (EBD)	S
Electronic stability control (ESC)	S
Emergency brake assist (EBA)	S
Emergency stop signal (ESS)	S
Fatigue reminder	S
Lane departure warning (LDW)	S
Lane keep assist (LKA)	S
Daytime running lights (DRL)	S
Hill launch assist	S
Reversing collision avoidance	S
Speed assistance - automatic / intelligent speed limiting (ISA)	S
Speed assistance - manual speed limiting	S
Speed assistance - speed sign recognition & warning	S
Tyre pressure monitoring system (TPMS)	S

**S** = Standard on all variants.  
**O** = Optional on base variant. May be standard on higher variants.  
**V** = Not available on base variant but standard or optional on higher variants.  
**X** = Not available on any variant.

These specifications are subject to change. Please check with the manufacturer for the latest specifications.

### Injury Values & Measurements.

Body Region	Frontal offset test at 64 km/h (v5.1)		Side impact test at 50 km/h (v5.1)
	Driver	Passenger	Driver
<b>Head</b>			
HIC	449.00	460.00	20.00
Acceleration (g for 3ms)	53.00	54.20	18.10
<b>Neck</b>			
Shear (kN)	0.44	-0.42	-
Tension (kN)	1.28	0.92	-
Extension (Nm)	12.50	10.50	-
<b>Chest</b>			
Acceleration (g for 3ms)	-	-	-
Compression (mm)	27.46	26.47	17.70
Viscous criterion (m/s)	0.11	0.10	0.08
<b>Abdomen</b>			
Force (kN)	-	-	0.36
<b>Pelvis</b>			
Force (kN)	-	-	1.11
<b>Upper legs</b>			
Femur force left (kN)	0.84	0.22	
Femur force right (kN)	0.60	0.29	
Knee displacement left (mm)	3.94	0.25	
Knee displacement right (mm)	3.19	0.22	
<b>Lower legs</b>			
Force left (kN)	1.74	2.15	
Force right (kN)	2.44	2.42	
Index (upper / lower) left	0.43 / 0.40	0.46 / 0.28	
Index (upper / lower) right	0.42 / 0.42	0.38 / 0.22	
<b>Intrusion Measurements*</b>			
<b>Steering column</b>			
Forward (mm)	47		
Upward (mm)	-21		
Sideways (mm)	2		
<b>Pedals</b>			
Accelerator - rearward (mm)	85		
Accelerator - upward (mm)	43		
<b>A-Pillar</b>			
Rearward (mm)	5		

\* Steering column and pedal movements are measured relative to the driver's seat.

\* **Model Variants:** ANCAP safety ratings do not automatically extend to variants that have different body styles, engine configurations, driven wheels or occupant restraint systems (e.g. fewer airbags). In these cases, ANCAP considers technical evidence submitted by manufacturers before deciding on extending a rating to additional variants of a model. For further information about the application of ANCAP safety ratings to model variants, see the ANCAP Variant Policy.

^ **Rating Year:** The Rating Year denotes the year requirements against which a vehicle has been assessed. The Rating Year is determined by ANCAP and may be based on the year in which a new vehicle model is first launched into the Australian and/or New Zealand markets; the year in which the vehicle was tested (if tested by Euro NCAP); or, for vehicles which hold an existing ANCAP safety rating, the year in which the rating was updated (or earlier applicable year).

### Assessment Details.

Tested Make / Model	Jeep Compass Longitude 2WD
Tested Vehicle(s) Built	2017
Tested Body Type	Small SUV
Tested Vehicle Kerb Weight	1510 kg
Tested Vehicle Engine	2.4 litre petrol 2WD
Tested By	ANCAP
Assessed By	ANCAP
Document Reference	Compass_17
Document Created / Revised	21 December 2017
Rating Published	December 2017
Rating Updated	June 2021



Frontal offset test at 64km/h