

ANCAP Safety Rating

MG6 (from 2012)



Test Vehicle(s).

Variant:	MG6 1.8 Turbo RHD
Kerb Mass:	1490 kg
Built:	2011 (Euro NCAP tests)
Engine:	1.8 petrol
Category:	Medium Car
Variant Applicability*:	All

Note: A right-hand-drive European model was tested by Euro NCAP.



Frontal offset test at 64 km/h

Airbags	ESC	Frontal Offset	Side Impact	Pole	Whiplash	Pedestrian	Seat Belt Reminders	Overall Score	ANCAP Safety Rating
Frontal + Side + Head	Standard	10.22 (out of 16)	13.51 (out of 16)	2 (out of 2)	[PENDING]	MARGINAL	2 (out of 3)	27.73 (out of 37)	★★★★★

The MG6 was introduced in New Zealand in 2012 and Australia in 2013. Some of these models have a build date of 2012. This ANCAP safety rating applies to all variants.

Dual frontal, side chest and side head airbags (curtains) are standard. Antilock brakes (ABS), electronic brake distribution (EBD) and electronic stability control (ESC) are also standard. Advanced seat belt reminders are fitted to both front seats.

OCCUPANT PROTECTION

Frontal Offset Test.

Each body region is scored out of 4 points

Head / neck:	3.00 points
Chest:	3.08 points
Upper legs:	1.95 points
Lower legs:	2.18 points

In the frontal offset crash test, the passenger compartment held its shape well. Pedal and steering wheel displacements were well controlled. Although dummy readings were good, there was insufficient pressure in the airbag to prevent the driver's head from making contact with the rim of the steering wheel. There were knee hazards for the driver and front passenger. All doors remained closed during the crash.

Side Impact Test.

Each body region is scored out of 4 points

Head:	4.00 points
Chest:	2.51 points
Abdomen:	4.00 points
Pelvis:	4.00 points

In the side impact test, dummy readings of rib compression indicated marginal protection of the driver's chest. An open door modifier was applied, resulting in a one point deduction.

Pole Test.

Scored 2 out of 2 points

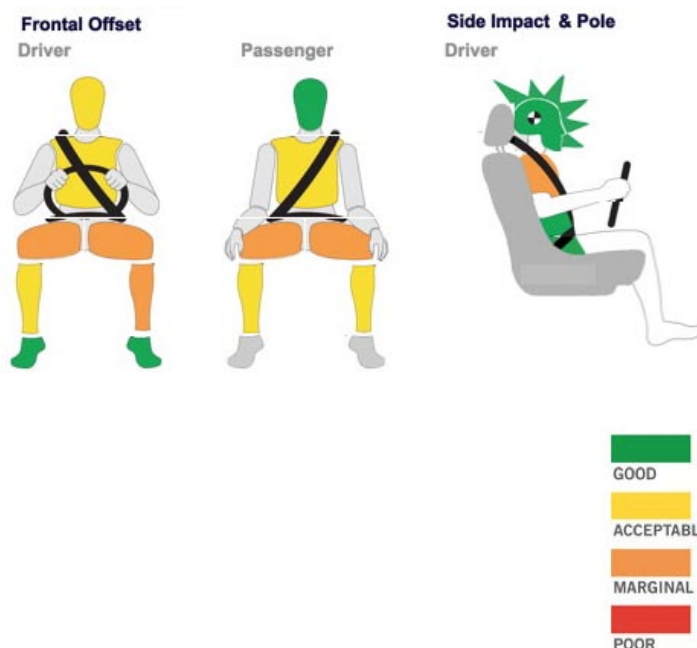
Head protection in the side pole test was good.

Whiplash Protection Test.

Whiplash protection is assessed to the RCAR Protocol

Geometric test:	[PENDING]
Dynamic test:	[PENDING]

Injury Outcomes.



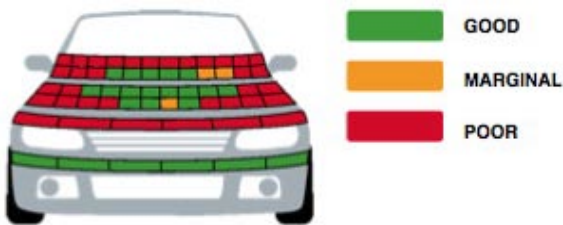
PEDESTRIAN PROTECTION

Pedestrian Test.

Marginal - Scored 14.99 out of 36 points

Child head impacts: 5.97 points
 Adult head impacts: 3.02 points
 Upper leg impacts: 0.00 points
 Lower leg impacts: 6.00 points

The bumper provided good protection to pedestrians' legs in all areas tested and scored maximum points. However, the front edge of the bonnet offered poor protection and scored no points. In most areas tested, the bonnet provided poor protection to the head of a struck pedestrian.



(Tested by Euro NCAP v5.3)



MG6

SAFETY FEATURES

These specifications are subject to change. Please check with manufacturer for the latest specifications. For a description of these safety features and safety rating requirements see the ANCAP Road Map.

Safety Assist Technology (SAT)	Availability
Front airbag - driver	S
Front airbag - passenger	S
Side airbags (chest protection) - front seats	S
Side airbags (head protection) - front seats	S
Side airbags (head protection) - 2nd row seats	S
Knee airbag - driver	X
Three-point seat belts for all forward facing seats	S
Seat belt pretensioners (front / rear outboard)	S / X
Intelligent seat belt reminder - driver	S
Intelligent seat belt reminder - front passenger	S
Intelligent seat belt reminder - 2nd row seats	X
Head restraints for all seats	S
Antilock brakes (ABS)	S
Electronic brake distribution (EBD)	S
Emergency brake assist (EBA)	S
Electronic stability control (ESC)	S
Adaptive cruise control (ACC)	X
Autonomous emergency braking (AEB)	X
Lane support system	X
ISOFIX anchorages	2

S = Standard on all variants.
 O = Optional on base variant. May be standard on higher variants.
 V = Not available on base variant but standard or optional on higher variants.
 X = Not available on any variant.

INJURY MEASUREMENTS

Body Region	Frontal offset test at 64 km/h (v5.1)		Side impact test at 50 km/h (v5.1)
	Driver	Passenger	Driver
Head			
HIC	253.00	249.00	147.00
Acceleration (g for 3ms)	53.10	38.40	37.00
Neck			
Shear (kN)	0.75	0.52	-
Tension (kN)	1.01	0.80	-
Extension (Nm)	8.50	14.10	-
Chest			
Acceleration (g for 3ms)			-
Compression (mm)	28.42	24.26	29.45
Viscous criterion (m/s)	0.17	0.07	0.25
Abdomen			
Force (kN)	-	-	0.57
Pelvis			
Force (kN)	-	-	1.72
Upper legs			
Femur force left (kN)	3.86	0.10	
Femur force right (kN)	0.50	0.90	
Knee displacement left (mm)	0.10	0.10	
Knee displacement right (mm)	0.60	0.00	
Lower legs			
Force left (kN)	3.44	1.99	
Force right (kN)	2.66	2.24	
Index (upper / lower) left	0.81 / 0.35	0.49 / 0.21	
Index (upper / lower) right	0.53 / 0.51	0.43 / 0.23	

INTRUSION MEASUREMENTS

Steering Column

Forwards:	41mm
Downwards:	35mm
Sideways:	0mm

Pedals

Brake (rearwards):	58mm
Clutch (upwards):	9mm
A-Pillar (rearwards):	40mm

SCORE DEDUCTIONS

Deductions from frontal offset test scores

Unstable airbag deployment:	1 point from head score
Variable contact driver right & left knee:	1 point from upper leg score
Variable contact passenger right & left knee:	1 point from upper leg score
Concentrated load driver right & left knee:	1 point from upper leg score
Concentrated load passenger right & left knee:	1 point from upper leg score

Deductions from side impact test score

Door open modifier:	1 point from overall score
---------------------	----------------------------

Deductions from pole test score

No deductions

* For information about the application of ANCAP ratings to model variants see the ANCAP Variant Policy. In brief, ratings do not automatically extend to variants that have different body styles, engine configurations, driven wheels or occupant restraint systems (e.g. fewer airbags). In these cases ANCAP considers technical evidence submitted by manufacturers before deciding on extending a rating to additional variants of a model.

^ Refer ANCAP Rating Road Map (www.ancap.com.au/media).

DOCUMENT REF: mg6_13
CREATED / REVISED: 6/8/2013