

AUDI A3



APPLIES TO
All variants

BUILT FROM
July 2025

RATING CRITERIA
2023-2025

VEHICLE TYPE
Small Car

ON SALE FROM
September 2025

RATING EXPIRES
December 2031

ENGINE / MOTOR TYPES
Petrol + Plug-in Hybrid

MODEL SERIES
N/A

AIRBAGS
Dual frontal, side chest,
side head, centre



ANCAP
SAFETY

TESTED
2025



The Audi A3 was introduced in New Zealand in July 2021 and Australia in October 2021.

Updates were introduced for vehicles on sale from September 2025, and this ANCAP safety rating applies to all vehicles built from July 2025 (VIN WAUZZZGY5TAXXXXXX onwards). A separate rating applies to Audi A3 vehicles built prior to July 2025.

The ANCAP safety rating for the Audi A3 is based on testing of the Audi A3 conducted in 2020 and 2025.

Dual frontal, side chest-protecting and side head-protecting airbags are standard. A centre airbag which provides added protection to front seat occupants in side impact crashes is also standard.

Autonomous emergency braking (Car-to-Car, Vulnerable Road User, Junction & Crossing and Head-On) as well as a lane support system with lane keep assist (LKA), lane departure warning (LDW) and emergency lane keeping (ELK), and a speed sign recognition system, are standard on all variants.

ASSESSMENT SCORES



Adult Occupant Protection

86%

34.44 out of 40



Child Occupant Protection

80%

39.34 out of 49



Vulnerable Road User Protection

76%

48.29 out of 63



Safety Assist

75%

13.61 out of 18

RATING APPLICABILITY*

VARIANT	BODY TYPE	ENGINE / POWERTRAIN	DRIVETRAIN	AUS	NZ
Audi A3 Sportback TFSI 110kW	5 door hatch	1.5L petrol	FWD	✓	✓
Audi A3 Sportback quattro TFSI 150kW	5 door hatch	2.0L petrol	AWD	✓	-
Audi S3 Sportback	5 door hatch	2.0L petrol	AWD	✓	✓
Audi A3 Sedan TFSI 110kW	4 door sedan	1.5L petrol	FWD	✓	-
Audi A3 Sedan quattro TFSI 150kW	4 door sedan	2.0L petrol	AWD	✓	-
Audi A3 Sedan	4 door sedan	2.0L petrol	AWD	✓	-
Audi A3 Sportback e-hybrid 150kW	5 door hatch	1.5 petrol PHEV	FWD	-	✓

* Correct at time of publication. Subject to change. Check with manufacturer.



Adult Occupant Protection

86%

34.44 out of 40

FRONTAL OFFSET (MPDB)*
3.48 points out of 8

OBLIQUE POLE*
6.00 points out of 6

RESCUE & EXTRICATION
3.67 points out of 4

FULL WIDTH FRONTAL*
7.75 points out of 8

WHIPLASH PROTECTION
3.54 points out of 4

SIDE IMPACT*
6.00 points out of 6

FAR SIDE IMPACT
4.00 points out of 4

* Scaled scores. Total test scored out of 16.00 points.

The passenger compartment remained stable in the **frontal offset (MPDB)** test. Dummy readings indicated MARGINAL protection of the driver's chest and lower legs. Protection of the front passenger lower legs was ADEQUATE, with GOOD protection for all other critical body regions for both the driver and front passenger.

The front structure of the Audi A3 presented a moderate risk to occupants of an oncoming vehicle in the MPDB test (which evaluates vehicle-to-vehicle compatibility), and a 5.07 point penalty (out of 8.00 points) was applied.

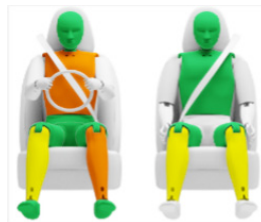
In the **full width frontal** test, protection was ADEQUATE for the chest of both the driver and the rear passenger, with GOOD protection offered to all other critical body regions.

In the **side impact** and the **oblique pole** tests, protection offered to all critical body regions was GOOD and the Audi A3 scored maximum points in these tests.

The Audi A3 is equipped with a centre airbag to protect against occupant-to-occupant interaction in side impacts and it provided GOOD protection for the head of both front seat occupants. Prevention of excursion (movement towards the other side of the vehicle) in the **far side impact** tests was assessed as ADEQUATE for both the vehicle-to-vehicle impact scenario and the vehicle-to-pole scenario.

A Rescue Sheet, providing information for first responders in the event of a crash is available, and a multi-collision braking system is fitted. It was demonstrated that, if the car entered water, the doors and windows of the Audi A3 would remain functional for the minimum required time period.

FRONTAL OFFSET (MPDB) TEST - 50km/h



	DRIVER	FRONT PASSENGER
Head / Neck	4.00 pts	4.00 pts
Chest	1.48 pts	4.00 pts
Upper Legs	4.00 pts	4.00 pts
Lower Legs	2.53 pts	3.79 pts
Deductions	Nil	Nil



COMPATIBILITY

Deductions	-5.07 pts
------------	-----------

FULL WIDTH FRONTAL TEST - 50km/h



	DRIVER	REAR PASSENGER
Head	4.00 pts	4.00 pts
Neck	4.00 pts	4.00 pts
Chest	3.26 pts	3.76 pts
Upper Legs	4.00 pts	4.00 pts
Deductions	Nil	Nil

SIDE IMPACT TEST - 60km/h



	DRIVER
Head	4.00 pts
Chest	4.00 pts
Abdomen	4.00 pts
Pelvis	4.00 pts
Deductions	Nil

OBLIQUE POLE TEST - 32km/h



	DRIVER
Head	4.00 pts
Chest	4.00 pts
Abdomen	4.00 pts
Pelvis	4.00 pts
Deductions	Nil



Adult Occupant Protection

86%

34.44 out of 40

FAR SIDE IMPACT TESTS - 60km/h and 32km/h



SIDE IMPACT (60km/h)	DRIVER
Head	4.00 pts
Neck	4.00 pts
Chest & Abdomen	4.00 pts
Pelvis	No penalty



OBLIQUE POLE (32km/h)	DRIVER
Head	4.00 pts
Neck	4.00 pts
Chest & Abdomen	4.00 pts
Pelvis	No penalty



OCCUPANT-TO-OCCUPANT	
Head Contact	No penalty

WHIPLASH PROTECTION TESTS



	DRIVER / FRONT PASSENGER	REAR PASSENGER
Rear Impact	2.79 pts	0.75 pts

RESCUE & EXTRICATION



Rescue Sheet	●	No penalty
Door Opening / Extrication	●	No penalty
Multi-Collision Braking	●	1.00 pt
Advanced eCall	✘	1.67 pt default
Vehicle Submergence		
- Door opening	●	0.50 pt
- Window opening	●	0.50 pt

● FITTED TO TEST CAR AS STANDARD ● NOT FITTED TO TEST CAR BUT AVAILABLE AS AN OPTION ✘ NOT AVAILABLE - N/A



Child Occupant Protection

80%

39.34 out of 49

DYNAMIC TEST (FRONT)
12.73 points out of 16

RESTRAINT INSTALLATION
11.62 points out of 12

DYNAMIC TEST (SIDE)
8.00 points out of 8

ON-BOARD SAFETY FEATURES
7.00 points out of 13

In the **frontal offset** test, neck and chest in the 10 year dummy indicated MARGINAL protection. For the 6 year dummy, the head and neck results indicated ADEQUATE protection. Protection offered to all other critical body regions of the 6 year and 10 year dummy was GOOD.

In the **side impact** test, protection of all critical body areas was GOOD for both child dummies, and maximum points were scored.

The Audi A3 is fitted with lower ISOFix anchorages on the rear outboard seats and top tether anchorages for all rear seating positions. Installation of typical child restraints available in Australia and New Zealand showed most child restraints could be accommodated in most rear seating positions, though in the centre rear position one of the selected convertible seats in forward facing mode, and one of the booster seats, could not be correctly installed.

A child presence detection (CPD) system, which provides an alert when a child may have been left in the vehicle, is not available.

FRONTAL OFFSET (MPDB) TEST - 50km/h

SIDE IMPACT TEST - 60km/h



6 YEAR OLD

10 YEAR OLD

10 YEAR OLD

6 YEAR OLD

ON-BOARD SAFETY FEATURES	FRONT PASSENGER	2nd ROW OUTBOARD	2nd ROW CENTRE	3rd ROW OUTBOARD	3rd ROW CENTRE
ISOFIX Anchorages	✗	●	✗	-	-
Top Tether Anchorage	✗	●	●	-	-
Airbag Disabling	✗/● [#]	-	-	-	-
Child Presence Detection 0.00 pts (out of 4.00pts)	✗	✗	✗	-	-

● FITTED AS STANDARD ✗ NOT AVAILABLE - N/A

[#] Not available on Australian vehicles, standard on New Zealand vehicles.

CHILD RESTRAINT TYPE ^{**}	FRONT ROW PASSENGER	2nd ROW			3rd ROW		
		L	C	R	L	C	R
BELTED							
Rearward-facing capsule	✗	●	●	●	-	-	-
Rearward-facing with harness - convertible (Model A)	✗	●	●	●	-	-	-
Rearward-facing with harness - convertible (Model B)	✗	●	●	●	-	-	-
Forward-facing with harness - convertible (Model A)	✗	●	●	●	-	-	-
Forward-facing with harness - convertible (Model B)	✗	●	●	●	-	-	-
Booster - 4 to 8 years	✗	●	●	●	-	-	-
Booster - 4 to 10 years	✗	●	●	●	-	-	-
ISOFIX							
Rearward-facing capsule	✗	●	-	●	-	-	-
Rearward-facing with harness - convertible (Model A)	✗	●	-	●	-	-	-
Rearward-facing with harness - convertible (Model B)	✗	●	-	●	-	-	-
Forward-facing with harness - convertible (Model A)	✗	●	-	●	-	-	-
Forward-facing with harness - convertible (Model B)	✗	●	-	●	-	-	-

● INSTALL WITHOUT PROBLEM ● INSTALL WITH CARE ● CANNOT BE FITTED SAFELY ✗ INSTALLATION NOT ALLOWED - N/A

GOOD ADEQUATE MARGINAL WEAK POOR NOT TESTED

NOTE: The child restraints fitted to vehicles tested by Euro NCAP are relevant to the European market. For Australasian consumers, this information should be used as a guide to vehicle features only. The Child Restraint Evaluation Program (CREP) provides an independent assessment on the safety of Australasian child restraints - see www.childrearseats.com.au. * Installation of each child restraint is assessed separately in each position. Installation of multiple restraints has not been assessed and may not be possible. ^ The list of child restraints has been selected to provide a general indication of the rated vehicle's ability to accommodate various CRS types. ANCAP does not endorse or recommend any one CRS brand or model, nor does it rate the safety of child restraints.



Vulnerable Road User Protection

76%
48.29 out of 63

HEAD PROTECTION (Adult, Child, Cyclist) 11.34 points out of 18	KNEE & TIBIA PROTECTION 6.77 points out of 9	AEB CYCLIST 6.97 points out of 9
PELVIS PROTECTION 4.50 points out of 4.5	AEB PEDESTRIAN (Forward) 6.21 points out of 7	AEB MOTORCYCLE 6.00 points out of 6
FEMUR PROTECTION 4.50 points out of 4.5	AEB PEDESTRIAN (Backover) 0.00 points out of 2	LSS MOTORCYCLE 2.00 points out of 3

In **pedestrian impact** tests, the bonnet and windscreen of the Audi A3 provided GOOD or ADEQUATE protection to the head of a struck pedestrian over most of its surface, with MARGINAL and POOR results recorded on the stiff windscreen pillars and the rear and sides of the bonnet.

Protection of the pelvis and femurs was GOOD, while protection of the lower legs was mixed, with areas of GOOD and MARGINAL performance.

The autonomous emergency braking (AEB) system is capable of detecting and reacting to vulnerable road users such as pedestrians, cyclists and motorcyclists.

Testing of this system showed GOOD performance in **AEB Pedestrian** test scenarios, including in turning scenarios, with collisions avoided or mitigated in most tests. The AEB system fitted to Australian and New Zealand vehicles reacts to vulnerable road users in reverse (**AEB Backover**) but was not standard on the tested vehicle and hence these tests were not conducted.

GOOD performance was seen in **AEB Cyclist** test scenarios with collisions avoided or mitigated at most test speeds including in turning scenarios. The vehicle provides a warning when a bicycle is approaching from behind (**cyclist anti-dooring**) however this system was not standard on the tested vehicle and was therefore not assessed.

GOOD performance was seen in **AEB Motorcyclist** tests, including in turning scenarios. Performance in **emergency lane keeping** scenarios was ADEQUATE.

PEDESTRIAN & CYCLIST IMPACT TESTS



AUTONOMOUS EMERGENCY BRAKING (Cyclist, Pedestrian & Motorcycle)

System Name	Active Front Assist
Type	Autonomous emergency braking with forward collision warning
Operational From	5-85 km/h

	Cyclist traveling along road (25%)	Cyclist crossing from kerb (obstructed)	Cyclist traveling along road (50%)	Cyclist crossing (nearside)	Cyclist crossing (farside)	Cyclist crossing side road, car turning (nearside)	Cyclist crossing side road, car turning (farside)
	DAY	DAY	DAY	DAY	DAY	DAY	DAY
AEB CYCLIST TEST SCENARIOS (forward)							
PERFORMANCE	GOOD	WEAK	GOOD	GOOD	GOOD	GOOD	GOOD

CYCLIST DOORING

Information (driver door)	-
Warning (driver door)	-
Retention (driver door)	-
Warning or retention (all other doors)	-

● PASS ✘ FAIL - N/A

■ GOOD
 ■ ADEQUATE
 ■ MARGINAL
 ■ WEAK
 ■ POOR / NOT TESTED DUE TO NO PERFORMANCE PREDICTED
 ■ NOT TESTED



Vulnerable Road User Protection

76%

48.29 out of 63

AEB PEDESTRIAN TEST SCENARIOS (reverse)	Child / Adult standing behind reversing vehicle (25% offset)	Adult / Child standing behind reversing vehicle (50% offset)	Child / Adult standing behind reversing vehicle (75% offset)	Adult / Child walking behind reversing vehicle (50% offset)
	DAY	DAY	DAY	DAY
4km/h				
8km/h				
PERFORMANCE	NOT ASSESSED			

AEB PEDESTRIAN TEST SCENARIOS (forward)	Adult walking along road		Adult crossing towards kerb (50%)		Adult crossing from kerb (25%)		Adult crossing from kerb (75%)		Child running (obstructed)		Adult crossing side road (farside), car turning		Adult crossing side road (nearside), car turning	
	DAY	NIGHT	DAY	NIGHT	DAY	NIGHT	DAY	NIGHT	DAY	NIGHT	DAY	NIGHT	DAY	NIGHT
PERFORMANCE	GOOD													

AEB MOTORCYCLE TEST SCENARIOS (forward)	Driving towards a stationary motorcycle			Driving towards a braking motorcycle (25% offset)			Turning across the path of an oncoming motorcycle		
	100% OFFSET	12m HEADWAY	40m HEADWAY	100% OFFSET	12m HEADWAY	40m HEADWAY	TARGET MOTORCYCLE SPEED		
AEB (10-50km/h)							10km/h		
FCW (30-80km/h)							15km/h		
PERFORMANCE	GOOD						GOOD		

LANE SUPPORT SYSTEMS (Car-to-Motorcycle)

System Name	Lane departure warning
Operational From	65-175 km/h

EMERGENCY LANE KEEPING (ELK) TEST SCENARIOS Car-to-Motorcycle	Oncoming motorcycle	Overtaking motorcycle (EMT at 60km/h)		Overtaking motorcycle (EMT at 80km/h)	
		UNINTENTIONAL	INTENTIONAL	UNINTENTIONAL	INTENTIONAL
PERFORMANCE					
	ADEQUATE				

■ GOOD
 ■ ADEQUATE
 ■ MARGINAL
 ■ WEAK
 ■ POOR / NOT TESTED DUE TO NO PERFORMANCE PREDICTED
 ■ NOT TESTED



Safety Assist

75%

13.61 out of 18

SEAT BELT REMINDERS
1.00 points out of 1

AEB / AES (Car-to-Car)
4.00 points out of 4

LANE SUPPORT SYSTEMS
2.50 points out of 3

DRIVER MONITORING
0.25 points out of 2

AEB / AES (Junction & Crossing)
3.95 points out of 4

SPEED ASSISTANCE SYSTEMS
1.41 points out of 3

AEB / AES (Head-On)
0.50 points out of 1

The Audi A3 is fitted as standard with a range of safety assist features including autonomous emergency braking (AEB) and a lane support system (LSS) with lane keep assist (LKA), lane departure warning (LDW) and blind spot monitoring (BSM).

Tests of the **AEB (Car-to-Car)** system showed GOOD performance with collisions avoided or mitigated in all test scenarios, including in many **AEB Junction** and **AEB Crossing** scenarios, where the test vehicle can autonomously brake to avoid crashes when turning across or into the path of an oncoming vehicle. **AEB Head-On** system functionality showed ADEQUATE performance.

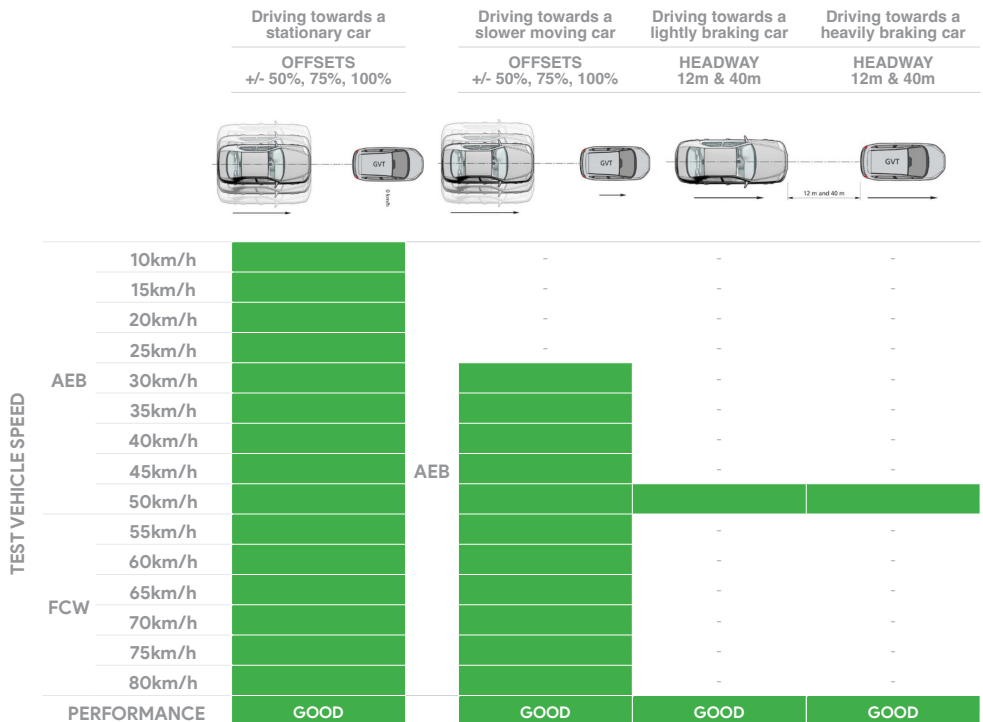
Tests of the **lane support system** functionality showed overall GOOD performance, though performance in the emergency lane keeping overtaking scenarios was POOR.

A speed assistance system (SAS) with speed limit information function (SLIF) is standard, informing the driver of the local speed limit and allowing the driver to manually set the speed accordingly.

A driver monitoring system (DMS) detecting driver drowsiness (indirect) is fitted as standard.

AUTONOMOUS EMERGENCY BRAKING (Car-to-Car)

System Name	Active Front Assist
Type	Autonomous emergency braking with forward collision warning
Operational From	5-250 km/h



■ GOOD
 ■ ADEQUATE
 ■ MARGINAL
 ■ WEAK
 ■ POOR / NOT TESTED DUE TO NO PERFORMANCE PREDICTED
 ■ NOT TESTED



Safety Assist

75%

13.61 out of 18

AUTONOMOUS EMERGENCY BRAKING (Car-to-Car Junction, Crossing and Head-On)

		JUNCTION ASSIST Turning across the path of an oncoming vehicle			CROSSING (T-BONE) Crossing the path of another vehicle				
TARGET VEHICLE SPEED		30km/h	45km/h	60km/h	20km/h	30km/h	40km/h	50km/h	60km/h
TEST VEHICLE SPEED	Start from stop	-	-	-	GOOD	GOOD	GOOD	GOOD	GOOD
	10km/h	GOOD	GOOD	GOOD	-	-	-	-	-
	15km/h	GOOD	GOOD	GOOD	-	-	-	-	-
	20km/h	GOOD	GOOD	GOOD	GOOD	GOOD	GOOD	GOOD	GOOD
	30km/h	-	-	-	GOOD	GOOD	GOOD	GOOD	GOOD
	40km/h	-	-	-	GOOD	GOOD	GOOD	GOOD	GOOD
	50km/h	-	-	-	GOOD	GOOD	GOOD	GOOD	GOOD
	60km/h	-	-	-	MARGINAL	GOOD	GOOD	GOOD	GOOD
PERFORMANCE		GOOD			GOOD				

		TARGET VEHICLE SPEED		HEAD-ON In the path of oncoming vehicle	
		50km/h	70km/h	50km/h	70km/h
TEST VEHICLE SPEED	Travelling straight	50km/h		GOOD	-
		70km/h		-	GOOD
	Lane change	50km/h		GOOD	-
		70km/h		-	GOOD
PERFORMANCE		ADEQUATE			

LANE SUPPORT SYSTEMS (Car-to-Car)

System Name	Lane departure warning
Operational From	65-175 km/h

		Dashed line		Solid line	
LANE KEEP ASSIST (LKA) TEST SCENARIOS Car-to-Car					
PERFORMANCE		GOOD			

		Oncoming vehicle	Overtaking vehicle (GVT at 72km/h)		Overtaking vehicle (GVT at 80km/h)		Road edge		Solid line	
			UNINTENTIONAL	INTENTIONAL	UNINTENTIONAL	INTENTIONAL				
EMERGENCY LANE KEEPING (ELK) TEST SCENARIOS Car-to-Car										
PERFORMANCE		GOOD	GOOD	GOOD	GOOD	GOOD	GOOD	GOOD	GOOD	GOOD
		ADEQUATE								

■ GOOD
 ■ ADEQUATE
 ■ MARGINAL
 ■ WEAK
 ■ POOR / NOT TESTED DUE TO NO PERFORMANCE PREDICTED
 ■ NOT TESTED



Safety Assist

75%

13.61 out of 18

OCCUPANT STATUS

WARNING TYPE	DRIVER	FRONT PASSENGER	REAR PASSENGERS
Occupant Detection	-	●	●
Seat Belt Reminder (Visual)	●	●	●
Seat Belt Reminder (Audible)	●	●	●

DRIVER MONITORING

	WARNING	INTERVENTION
Distraction	✗	✗
Fatigue	●	✗
Unresponsive Driver	-	✗

SPEED ASSISTANCE SYSTEMS (SAS)

FEATURE	
Speed Limit Information Function (SLIF)	Camera & map
Manual Speed Limiter	●
Intelligent Adaptive Cruise Control (iACC)	✗
Intelligent Speed Limitation (ISL)	✗

HUMAN MACHINE INTERFACE (HMI)

FEATURE	
AEB: Supplementary Warning	●
AEB: Restraint activation / dynamic retractors / emergency steering support	●
Lane Departure Warning (LDW)	●
Blind Spot Monitoring (BSM): Car-to-Car & Car-to-Motorcycle	NOT ASSESSED

SAFETY FEATURES & TECHNOLOGIES

SAFETY FEATURE / TECHNOLOGY*	AUS	NZ
Seat belt pre-tensioners (front seats)	●	●
Seat belt pre-tensioners (rear outboard seats) - 2nd row	●	●
Seat belt pre-tensioners (rear centre seat) - 2nd row	✗	✗
Seat belt pre-tensioners (rear outboard seats) - 3rd row	-	-
Seat belt pre-tensioners (rear centre seat) - 3rd row	-	-
Intelligent seat belt reminder (driver)	●	●
Intelligent seat belt reminder (front passenger)	●	●
Intelligent seat belt reminder (2nd row seats)	●	●
Intelligent seat belt reminder (3rd row seats)	-	-
Airbag - dual frontal (driver & front passenger)	●	●
Airbags - side, chest protection (front seats)	●	●
Airbags - side, chest protection (2nd row seats)	✗	✗
Airbags - side, chest protection (3rd row seats)	-	-
Airbags - side, head protection (front seats)	●	●
Airbags - side, head protection (2nd row seats)	●	●
Airbags - side, head protection (3rd row seats)	-	-
Airbag - centre	●	●
Airbag - knee (driver)	✗	✗
Airbag - knee (front passenger)	✗	✗
Airbag - pedestrian (external)	✗	✗
Airbag disabling switch - automatic (front passenger)	✗	✗
Airbag disabling switch - manual (front passenger)	✗	●
Autonomous emergency braking (AEB) - Car-to-Car	●	●
Autonomous emergency braking (AEB) - Vulnerable Road User		
- AEB Pedestrian	●	●
- AEB Backover	●	●
- AEB Cyclist	●	●
- AEB Motorcycle	●	●
Autonomous emergency braking (AEB) - Junction		
- AEB Junction (Car)	●	●
- AEB Junction (Pedestrian)	●	●
- AEB Junction (Cyclist)	●	●
- AEB Junction (Motorcycle)	●	●
Autonomous emergency braking (AEB) - Crossing	●	●
Automatic emergency call (eCall)	●	●
Blind spot monitor (BSM)	●	●
Child presence detection / alert	✗	✗
Cyclist dooring detection / alert	●	●
Driver monitoring system - Indirect	●	●
Driver monitoring system - Direct	✗	✗
Forward collision warning (FCW)	●	●
Lane departure warning (LDW)	●	●
Lane keep assist (LKA)		
- LKA (Car-to-Car)	●	●
- LKA (Car-to-Motorcycle)	●	●
Secondary / multi-collision brake	●	●
Speed assistance - intelligent adaptive cruise control (iACC)	✗	✗
Speed assistance - auto / intelligent speed limiter	✗	✗
Speed assistance - manual speed limiter	●	●
Speed assistance - speed sign recognition & warning	●	●
Vehicle-to-infrastructure communication (V2I)	✗	✗
Vehicle-to-vehicle communication (V2V)	✗	✗

● STANDARD ● AVAILABLE ON HIGHER VARIANTS ○ OPTIONAL ✗ NOT AVAILABLE - NOT APPLICABLE

* Correct at time of publication. Subject to change. Check with manufacturer.

TESTED MAKE / MODEL
Audi A3, 30 TFSI LHD

TESTED VEHICLE ENGINE
1.5 TFSI 85kW, petrol

RATING UPDATED
n/a

TESTED BODY TYPE
5 door hatch

RATING PUBLISHED
March 2026