

ANCAP Safety Rating

MITSUBISHI ECLIPSE CROSS

(December 2017 – December 2023)



Mitsubishi Eclipse Cross

This ANCAP safety rating applies to:

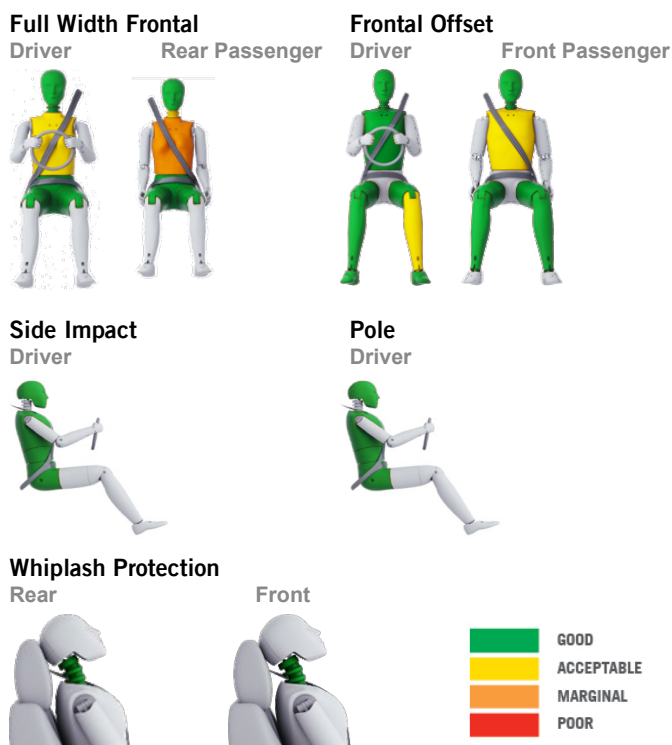
Make / Model	Mitsubishi Eclipse Cross
Year Range	December 2017 - December 2023
Variant(s)*	All variants
Vehicle Type	Small SUV

The Mitsubishi Eclipse Cross was introduced in Australia and New Zealand in December 2017. This ANCAP safety rating applies to all variants, including the PHEV introduced from May 2021.

Dual frontal, side chest, side head (curtain) and a driver knee airbag are standard. Autonomous emergency braking (AEB) and a manual set speed limiter are standard, while a lane departure warning (LDW) system is available on some variants.

NOTE: Mitsubishi has advised that changes were made to the AEB configuration on vehicles built from April 2021. These changes are expected to reduce the performance in AEB Pedestrian tests, however technical evidence provided by Mitsubishi demonstrates the reduced performance does not affect the 5 star rating for these vehicles. This revised specification has not been tested by ANCAP. Performance differences are not expected in other test scenarios.

Injury Outcomes.



Test Results Summary.

Airbags	Dual Frontal, Side, Head, Knee
Adult Occupant Protection	97% (36.94 out of 38)
- Full Width Frontal Test [#]	7.29 (out of 8)
- Frontal Offset Test [#]	7.96 (out of 8)
- Side Impact Test [#]	8.00 (out of 8)
- Pole Test [#]	8.00 (out of 8)
- Whiplash Protection Test	2.69 (out of 3)
- AEB (City)	3.00 (out of 3)
Child Occupant Protection	78% (38.24 out of 49)
Safety Assist	58% (7.05 out of 12)
- Speed Assistance System	1.50 (out of 3)
- Seat Belt Reminders	3.00 (out of 3)
- Lane Support System	0.00 (out of 3)
- AEB (Interurban)	2.55 (out of 3)
Pedestrian Protection	80% (33.83 out of 42)
ANCAP Safety Rating	★★★★★
Rating Year[^]	2017

[#] Scaled scores. Total test score out of 16.00 points.

Adult Occupant Protection.

Full Width Frontal Test

Each body region is scored out of 4 points

Driver		Rear Passenger	
Head:	4.00 points	Head:	4.00 points
Neck:	4.00 points	Neck:	3.78 points
Chest:	3.18 points	Chest:	2.18 points
Upper legs:	4.00 points	Upper legs:	4.00 points

In the full width frontal test, protection of the chest of the rear passenger was rated as marginal. Protection of other critical body regions for both dummies was rated as good or acceptable.

Frontal Offset Test

Each body region is scored out of 4 points

Driver / Front Passenger (lesser of each)

Head / neck:	4.00 points
Chest:	3.97 points
Upper legs:	4.00 points
Lower legs:	3.96 points

The passenger compartment of the vehicle remained stable in the frontal offset test. Dummy readings showed good protection of the knees and femurs of both the driver and passenger. All doors remained closed during the test.

Side Impact Test

Pole Test

Each body region is scored out of 4 points

Head:	4.00 points	Head:	4.00 points
Chest:	4.00 points	Chest:	4.00 points
Abdomen:	4.00 points	Abdomen:	4.00 points
Pelvis:	4.00 points	Pelvis:	4.00 points

Good protection was provided for the driver in the side impact test and pole test.

Whiplash Protection

Front / Rear:	1.69 points
Rear:	1.00 points
AEB (City):	3.00 points

ANCAP Safety Rating

MITSUBISHI ECLIPSE CROSS

(December 2017 – December 2023)



Child Occupant Protection.

Crash Test Performance

6 year old child:	10.95 points
10 year old child:	10.04 points

In the frontal offset test, dummy readings from the 10 year dummy indicated weak protection of the neck. The protection of all other critical body areas was good or acceptable for both the 6 year and 10 year dummies. In the side impact test, protection of both dummies was good and maximum points were scored.

Child Safety Features & Child Seat Installation

Safety features:	6.00 points
Installation check:	11.25 points

NOTE: The child restraints tested by Euro NCAP are relevant to the European market. For Australasian consumers, this information should be used as a guide to vehicle features only. For more detailed information about Australian child restraints visit childcarseats.com.au.

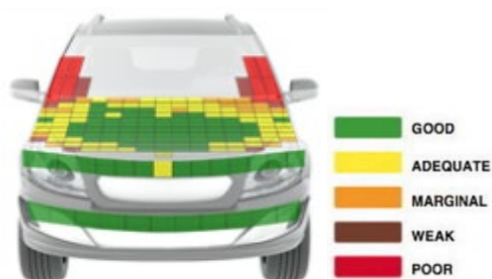
Pedestrian Protection.

Pedestrian Test

Scored out of 42 points

Adult & child head impacts:	18.14 points
Upper leg impacts:	5.94 points
Lower leg impacts:	6.00 points
AEB (VRU):	3.75 points

This vehicle scored 33.83 out of 42 points. The protection provided by the bonnet was good or adequate at almost every test location. The bumper scored maximum points for its protection of pedestrians' legs. Protection of the pelvis was also good at all test points except one, where protection was adequate. The autonomous emergency braking systems performed adequately in tests of its functionality when reacting to pedestrians. (Tested by Euro NCAP v8.3)



Score Deductions.

Deductions from full width frontal test scores

Head:	No deductions
Chest:	No deductions
Overall:	No deductions

Deductions from frontal offset test scores

Head / neck:	No deductions
Chest:	No deductions
Upper legs:	No deductions
Lower legs:	No deductions
Overall:	No deductions

Deductions from side impact test score

Overall:	No deductions
----------	---------------

Deductions from pole test score

Overall:	No deductions
----------	---------------

Safety Features & Technologies.

Descriptions of each of these safety features and safety assist technologies (SAT) and detail on fitting requirements for each star rating level can be found at ancap.com.au.

Safety Feature / Safety Assist Technology	Availability
Seat belts (three-point, lap/sash) for all forward-facing seats	S
Seat belt pretensioners (front)	S
Seat belt pretensioners (rear outboard)	S
Intelligent seat belt reminder (driver)	S
Intelligent seat belt reminder (front passenger)	S
Intelligent seat belt reminder (2 nd row seats)	S
Airbag - Frontal (driver)	S
Airbag - Frontal (passenger)	S
Airbag - Side, chest protection (front seats)	S
Airbag - Side, chest protection (2 nd row seats)	X
Airbag - Side, head protection (front seats)	S
Airbag - Side, head protection (2 nd row seats)	S
Airbag - Knee (driver)	S
Airbag - Knee (front passenger)	X
Head restraints for all seats	S
Adaptive cruise control (ACC)	V
Antilock braking system (ABS)	S
Autonomous emergency braking (AEB)	
- City	S
- Interurban	S
- Vulnerable road user	S
Automatic headlights	V [#]
Automatic high beam	V [#]
Attention assist	X
Blind spot monitoring (BSM)	V
Electronic brakeforce distribution (EBD)	S
Electronic stability control (ESC)	S
Emergency brake assist (EBA)	S
Lane departure warning (LDW)	V
Lane keep assist (LKA)	X
Daytime running lights (DRL)	S
Hill launch assist	S
Reversing collision avoidance	S
Speed assistance – automatic / intelligent speed limiting (ISA)	X
Speed assistance - manual speed limiting	S
Speed assistance - speed sign recognition & warning	X
Tyre pressure monitoring system (TPMS)	X

S = Standard on all variants.

O = Optional on base variant. May be standard on higher variants.

V = Not available on base variant but standard or optional on higher variants.

X = Not available on any variant.

= Standard on higher specification variants built from October 2020.

These specifications are subject to change. Please check with the manufacturer for the latest specifications.

ANCAP Safety Rating

MITSUBISHI ECLIPSE CROSS

(December 2017 – December 2023)



Safety Assist.

Speed Assistance System (SAS)

Scored 1.50 out of 3 points

Speed information:	0.00
Speed assistance (manual):	1.50
Speed assistance (automatic / intelligent):	0.00

AEB (Interurban)

Scored 2.55 out of 3 points

Autonomous emergency braking (AEB):	1.41 out of 1.50
Forward collision warning (FCW):	0.89 out of 1.00
Human machine interface (HMI):	0.25 out of 0.50

Seat Belt Reminder (SBR)

Scored 3.00 out of 3 points

Driver and passenger:	2.00 out of 2.00
Rear:	1.00 out of 1.00

Lane Support Systems (LSS)

Scored 0.00 out of 3 points

Type: Lane departure warning (LDW)

Intelligent seat belt reminders are fitted as standard for front and rear seats. A manual speed limiter is also standard. A lane departure warning (LDW) system is available on some variants, however is not standard equipment and therefore no points are awarded. Tests of the the autonomous emergency braking system at highway speeds demonstrated good performance with collisions avoided or mitigated in all test scenarios and at all test speeds.

Approaching a stationary vehicle:

16.28 out of 18.00 points for Forward Collision Warning (FCW)



Approaching a slow moving vehicle:

11.00 out of 11.00 points for Autonomous Emergency Braking (AEB)



Approaching a braking vehicle with short headway:

1.52 out of 2.00 points for AEB, 1.51 out of 2.00 points for FCW



Approaching a braking vehicle with long headway:

2.00 out of 2.00 points for AEB, 2.00 out of 2.00 points for FCW



ANCAP Safety Rating

MITSUBISHI ECLIPSE CROSS

(December 2017 – December 2023)



Injury Values & Measurements.

Body Region	Frontal offset test at 64km/h (v7.1)		Full width frontal test at 50km/h (v1.0)		Side impact test at 50km/h (v7.1)	Oblique pole test at 32km/h (v7.0)
	Driver	Front Passenger	Driver	Rear Passenger	Driver	Driver
Head						
HIC	176	111	249	342	28	246
Acceleration (g for 3ms)	43.30	36.30	49.34	56.95	21.00	51.91
Neck						
Shear (kN)	0.29	0.47	0.22	0.92	-	-
Tension (kN)	1.44	0.81	1.51	1.90	-	-
Extension (Nm)	18.80	10.80	13.11	11.74	-	-
Chest						
Acceleration (g for 3ms)	-	-	-	-	-	-
Compression (mm)	20.33	22.16	22.93	28.93	13.71	23.54
Viscous criterion (m/s)	0.04	0.07	0.10	0.12	0.07	0.16
Abdomen						
Compression (mm)	-	-	-	-	14.97	31.46
Pelvis						
Force (kN)	-	-	-	-	0.93	-
Upper legs						
Femur force left (kN)	1.15	0.50	1.50	0.16	-	-
Femur force right (kN)	0.62	0.09	1.43	0.16	-	-
Knee displacement left (mm)	1.65	1.16	0.21	-	-	-
Knee displacement right (mm)	1.29	0.01	1.49	-	-	-
Lower legs						
Force left (kN)	1.88	1.62	-	-	-	-
Force right (kN)	1.56	1.50	-	-	-	-
Index (upper / lower) left	0.41 / 0.34	0.25 / 0.21	-	-	-	-
Index (upper / lower) right	0.30 / 0.22	0.30 / 0.16	-	-	-	-
Intrusion Measurements						
Steering column						
Forward (mm)	21	-	0	-	-	-
Upward (mm)	10	-	2	-	-	-
Sideways (mm)	3	-	0	-	-	-
Pedals						
Clutch - rearward (mm)	46	-	-	-	-	-
Clutch - upward (mm)	22	-	-	-	-	-
A-Pillar						
Rearward (mm)	4	-	-	-	-	-

* **Model Variants:** ANCAP safety ratings do not automatically extend to variants that have different body styles, engine configurations, driven wheels or occupant restraint systems (e.g. fewer airbags). In these cases, ANCAP considers technical evidence submitted by manufacturers before deciding on extending a rating to additional variants of a model. For further information about the application of ANCAP safety ratings to model variants, see the ANCAP Variant Policy.

^ **Rating Year:** The Rating Year denotes the year requirements against which a vehicle has been assessed. The Rating Year is determined by ANCAP and may be based on the year in which a new vehicle model is first launched into the Australian and/or New Zealand markets; the year in which the vehicle was tested (if tested by Euro NCAP); or, for vehicles which hold an existing ANCAP safety rating, the year in which the rating was updated (or earlier applicable year).

Assessment Details.

Tested Make / Model	Mitsubishi Eclipse Cross Invite 4x2 LHD
Tested Vehicle(s) Built	2017
Tested Body Type	5 door SUV
Tested Vehicle Kerb Weight	1425 kg
Tested Vehicle Engine	1.5 litre petrol
Tested By	Euro NCAP
Assessed By	Euro NCAP
Document Reference	EclipseCross_17
Document Created / Revised	28 November 2017
Rating Published	December 2017
Rating Updated	March 2023



Frontal offset test at 64km/h