

# Crash Test Results

## New Car Safety

### VOLVO V60 (LHD)

From 2011

Front+side+head airbags



Offset crash test at 64km/h



**ANCAP**

Rated ★★★★★

**Occupant Protection**

**Occupant Protection Score 36.34 out of 37**

Variant: D3 Momentum

Eng: 2 litre diesel

Kerb mass 1740 kg

Category: CAR - LARGE

Vehicles built: 2011

Tested by Euro NCAP

**Important note:** The *diesel LHD* European model was tested by Euro NCAP. Australasian specifications may vary and therefore models sold in Australasia might provide different levels of protection to those described on this page.

#### Model History and Safety Features

The tested model of Volvo V60 was introduced in Australia during 2011. This ANCAP rating currently applies to V60 variants with a 5 cylinder diesel engine and front-wheel-drive. Further technical information is being sought about other variants.

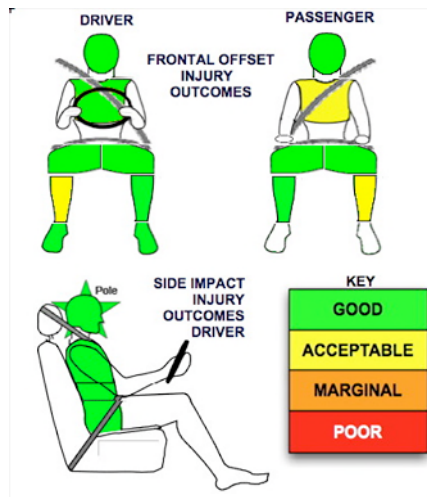
Dual front airbags, side airbags and head-protecting side curtains are standard equipment. Antilock brakes (ABS), electronic brakeforce distribution (EBD) and electronic stability control (ESC) are also standard. Intelligent seat belt reminders are fitted to all seats. City Safety - an advanced collision avoidance system - is standard. Several other advanced safety features are available.

Pretensioners are fitted to the front seat belts to reduce slack in the event of a crash. A three point seat belt is fitted to the centre rear seat. This provides better protection than a two point (lap) seat belt.

#### OCCUPANT PROTECTION: 5 Stars

The V60 scored 15.34 out of 16 in the offset crash test. The passenger compartment held its shape well. There was a slight risk of serious leg injury for the driver and front passenger. There was a slight risk of serious chest injury for the front passenger.

The vehicle scored 16 out of 16 in the side impact crash test and a further two points in the pole test.



#### Whiplash Protection



#### FRONTAL OFFSET CRASH TEST

Body region scores out of 4 points each: Head/neck 4.0 pts, chest 3.96 pts, upper legs 4.0 pts, lower legs 3.38 pts.

The passenger compartment held its shape well in the offset crash test. The brake pedal moved rearwards by 24 mm and upwards 19 mm. The steering wheel hub moved 84mm forward, 28mm downward and 8 mm sideways. The front ("A") pillar moved 1 mm rearwards. All doors remained closed during the crash. After the crash the driver's door could be opened with normal effort.

The airbag cushioned the head of the driver and contact was stable. The passenger's head was cushioned by the airbag. There were no knee hazards.

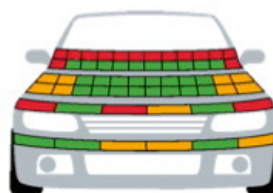
#### SIDE IMPACT CRASH TEST

Body region scores out of 4 points each: Head 4 pts, chest 4 pts, abdomen 4 pts, pelvis 4 pts.

The vehicle scored the maximum 2 points in the pole test.

#### PEDESTRIAN PROTECTION: Acceptable

| PEDESTRIAN PROTECTION  |                    |                         |
|------------------------|--------------------|-------------------------|
| <b>ACCEPTABLE</b>      | Child head impacts | 9.74                    |
|                        | Adult head impacts | 5.00                    |
|                        | Upper leg impacts  | 2.75                    |
|                        | Lower leg impacts  | 5.67                    |
| Tested by Euro NCAP v5 |                    | Total (out of 36) 23.16 |



PASS  
MARGINAL  
FAIL

**AUGUST 2011**

PO Box 4041

Manuka ACT 2603

v60\_11.doc

Revised 16/9/2011



**ANCAP**

Crash testing for safety

AUSTRALASIAN  
NEW CAR ASSESSMENT  
PROGRAM

# TECHNICAL DATA - VOLVO V60 - From 2011

## INJURY MEASUREMENTS

| Body region                    | Offset Crash Test at 64km/h<br>(v5.2) |            | Side Impact Crash<br>Test at 50km/h<br>(v5.2) |
|--------------------------------|---------------------------------------|------------|---|
|                                | Driver                                | Passenger  | Driver  |
| <b>Head</b> HIC                | 377                                   | 247        | 26  |
| Acceleration (g for 3ms)       | 44.5                                  | 41.8       | 19.9  |
| <b>Neck</b> - Shear (kN)       | 0.34                                  | 0.53       | -   |
| Tension (kN)                   | 0.88                                  | 0.92       | -   |
| Extension (Nm)                 | 5.2                                   | 10.1       | -   |
| <b>Chest</b> Accln (g for 3ms) | -                                     | -          | -   |
| Compression (mm)               | 20.66                                 | 22.29      | 10.61   |
| Viscous criterion (m/s)        | 0.05                                  | 0.05       | 0.05  |
| <b>Abdomen</b> - Force (kN)    | -                                     | -          | 0.440   |
| <b>Pelvis</b> - Force (kN)     | -                                     | -          | 1.240   |
| <b>Upper legs</b> Force (kN)   | Left                                  | 0.10       | 0.80  |
|                                | Right                                 | 0.19       | 0.40  |
|                                | Left                                  | 0.00       | 0.10  |
|                                | Right                                 | 0.00       | 0.10  |
| <b>Lower legs</b> Force (kN)   | Left                                  | 1.65       | 1.84  |
|                                | Right                                 | 1.64       | 1.57  |
| Index (Upper/Low)              | Left                                  | 0.35 /0.21 | 0.51 /0.33                                    |
|                                | Right                                 | 0.42 /0.54 | 0.36/0.12                                     |

### Bonus points (maximum 5)

Pole Test: 2 pts

Seat belt reminders: 3 (see table below for details)

### Modifiers - deductions from offset test scores

|                                    |                |
|------------------------------------|----------------|
| Head                               | No deduction   |
| Chest                              | No deduction   |
| Upper leg Variable & conc. loading | No deduction   |
| Lower leg                          | No deduction   |
| Foot score                         | Score 4 points |

### Modifiers - deductions from side impact test scores

|       |              |
|-------|--------------|
| Chest | No deduction |
|-------|--------------|

### Safety features

These specifications are subject to change. Please check with manufacturer for the latest specifications.



|   |     |  |       |
|---|-----|--|-------|
| Driver airbag                                 | S   | Antilock (ABS) brakes / Electronic brake distribution / Brake Assist | S/S/S |
| Passenger front airbag                        | S   | Electronic stability control (ESC, VSC, DSC, ESP, VSA)               | S#    |
| Side airbags, front seats - chest protection  | S   | 3 point centre rear seat belt  | S     |
| Side airbags, front seats - head protection   | S   | Whiplash protection (RCAR Protocol)                                  | Good  |
| Side airbags, rear seats - head protection    | S   | Intelligent seat belt reminder - driver                              | S     |
| Driver knee airbag                            | X   | Intelligent seat belt reminder - front passenger                     | S     |
| Seat belt pretensioners (Front/Rear outboard) | S/S | Intelligent seat belt reminder - rear seats                          | S     |

Key:

S = standard on all variants

O = optional on base variant. May be standard on higher variants

V= not available on base variant but standard or optional on higher variants

X = not available on any variant

# ESC required by ANCAP for 5 star rating from 2008