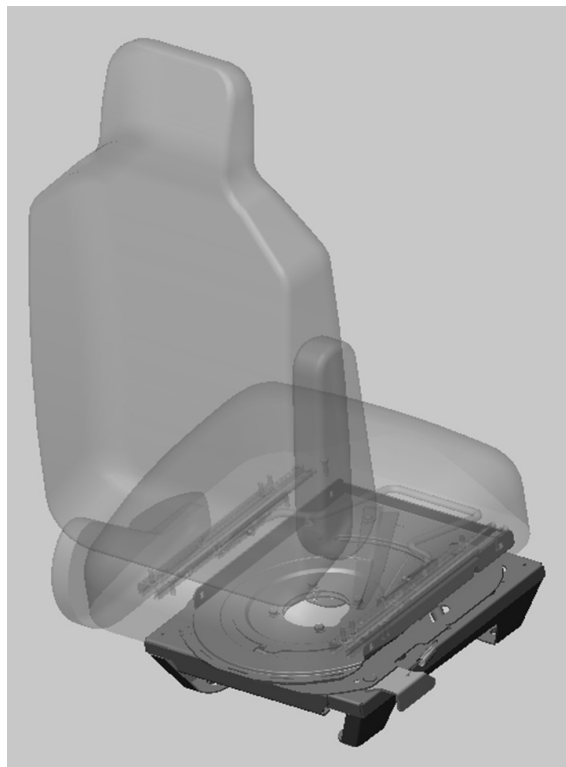


 **Atwood®**  
**Atwood Mobile Products LLC**  
1120 North Main Street • Elkhart, IN 46514  
**PHONE:** 574•264•2131 **FAX:** 574•262•2550  
**INTERNET:** <http://www.atwoodmobile.com>

LITERATURE NUMBER XX XXXX

## **SWIVEL PEDESTAL**



## **OPERATION MANUAL**

Effective April 2012

**WARNING!**

**SEATS SHALL ALWAYS STAY IN THEIR FORWARD FACING POSITION WHILE THE VEHICLE IS IN OPERATION.  
NEVER ATTEMPT TO UNLOCK OR SWIVEL THE SEAT WHILE THE VEHICLE IS IN MOTION.**

**CAUTION!**

**THE ATWOOD SWIVEL PEDESTAL HAS BEEN DESIGNED TO BE SAFELY OPERATED WHILE THE SEAT IS UNOCCUPIED AND THE OPERATOR IS POSITIONED SAFELY BEHIND THE SEAT. DO NOT ATTEMPT TO ADJUST OR SWIVEL THE SEAT WHEN OCCUPIED.**

**TO SWIVEL THE SEAT:**

NOTE: These instructions will work for the driver and passenger side Atwood swivel pedestal seating systems.

1. If the seat is reclined, adjust the back of the seat to its full upright position.

2. Move the driver's seat to its full REARWARD position by sliding the seat back using the seat's forward and rearward seat adjuster. The seat is ready to be unlocked.

3. Pull the latch away from the seat base to unlock seat from the driving position. The seat is now unlocked and ready to be moved. (FIG 1.)

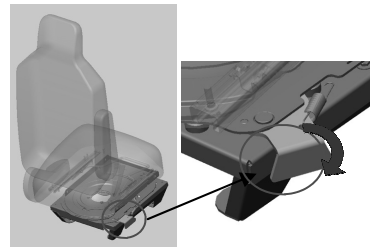


FIG 1.

3. Pull the latch away from the seat base to unlock seat from the driving position. The seat is now unlocked and ready to be moved. (FIG 1.)

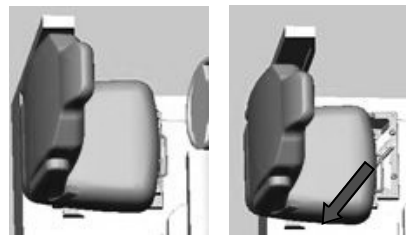


FIG 2.

4. Pull the seat until it stops. The seat moves diagonally toward the center of the vehicle when pulled (FIG 2.). When stopped, the seat is now ready to swivel.

5. Manually turn the seat clockwise (counter-clockwise for the passenger seat) to your desired position. The Atwood swivel pedestal is designed to rotate the seat a full 180 °, can be reclined (limited recline for the driver's side), and can be slid forward and rearward. (FIG 3.)

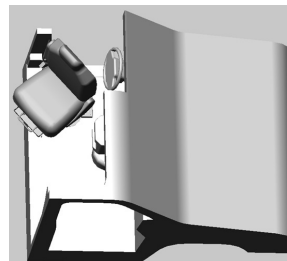


FIG 3.

**CAUTION:**

**KEEP HANDS CLEAR OF THE SLIDING AND SWIVEL MECHANISMS WHILE THE CHAIR IS IN THE UNLOCKED POSITION.**

#### **TO RETURN SEAT TO FORWARD POSITION:**

NOTE: These instructions will work for the driver and passenger side Atwood swivel pedestal seating systems.

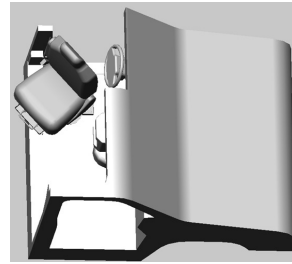


FIG 1.

1. If the seat is reclined, adjust the back of the seat to its full upright position. (FIG 1.)

2. Move the driver's seat to its full FORWARD position by sliding the seat back using the seat's forward and rearward seat adjuster. The seat is ready to be swiveled back into position.

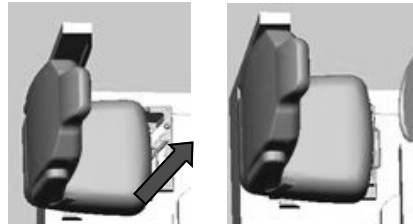


FIG 2.

3. Manually turn the seat counter-clockwise (clockwise for the passenger side) to the forward facing position. The locking mechanism within the Atwood swivel pedestal may produce a click when returned to its forward facing position.

4. Push the seat outboard back to its forward facing driving position. (Fig 2.)

5. To ensure the seat is in its locked driving position, attempt to pull the seat inboard. If the seat still slides, it is still unlocked, repeat step 3. The seat latch should be its closed position. (FIG 3)

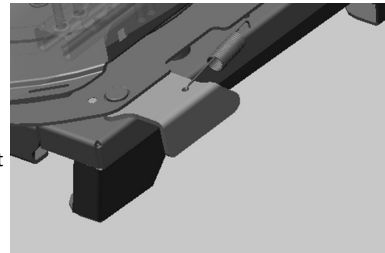


FIG 3.

#### **WARNING:**

**THE LATCH SHOULD BE IN LINE TO THE BASE AND THE SEAT SHOULD NOT ROTATE OR SLIDE DIAGONALLY WHEN IN DRIVING POSITION (SEE FIG 3). DO NOT OPERATE THE VEHICLE WHEN ANY SEAT IS IN AN UNLOCKED POSITION.**

#### **MAINTENANCE:**

The Atwood swivel pedestal was designed to be maintenance free throughout the life of the unit. No additional maintenance is necessary.

#### **WARRANTY/ REPAIRS:**

The Atwood swivel pedestal was manufactured for years of consistent, worry-free operation. In the unlikely event a piece of the Atwood swivel pedestal should work incorrectly, please do not attempt to repair yourself. Warranty or repair concerns should be handled by an authorized dealer, the RV manufacturer or the Atwood Service Department, 574-264-2131.

## ATWOOD SEATING COMPONENTS LIMITED WARRANTY

The Atwood seating components consisting of: seat reclining mechanisms, seat adjusters, chair and sofa frames, seat pedestals and associated mounting bracketry are covered by the limited warranty as set forth below:

Atwood warrants to the original purchaser, who purchases for purposes other than resale, that Atwood Mobile Products, LLC. To be free from defects in factory workmanship and materials under normal use and service for a period of twenty-four (24) months from the date of sales to the original purchaser of the vehicle or date of installation if installed in a vehicle currently in service. This warranty is transferable to subsequent owners of the vehicle throughout the warranty period.

Atwood agrees to repair or replace any part which, **after inspection by Atwood** is proven to be defective within the warranty period. Warranty will include reasonable labor for replacement at factory established rates only. Atwood's obligation under this warranty is limited only to the replacement of parts which fail due to defective workmanship or material used by Atwood. This Warranty does not cover improper application of the product or products, or the workmanship of the installer or consequential damages arising from such poor workmanship or improper application. There are not provisions for travel time, down time, or other expenses for any reason as a result of a failure of an Atwood product to operate properly. All repairs are to be made by an authorized service center or designated, prior approved facility.

THIS WARRANTY IS THE ONLY WARRANTY APPLICABLE TO ATWOOD MOBILE PRODUCTS, LLC AND IS EXPRESSLY IN LIEU OF ALL OTHER WARRANTIES. THE IMPLIED WARRANTIES OF MERCHANTABILITY OR FITNESS ARE HEREBY LIMITED IN DURATION TO THE WARRANTY PERIOD SET FORTH ABOVE. ATWOOD'S OBLIGATIONS DOES NOT INCLUDE ANY LIABILITY FOR INCIDENTAL OR CONSEQUENTIAL DAMAGES, HOWEVER ARISING.

Some states do not allow limitations on how long as implied warranty lasts or the exclusion or limitation of incidental or consequential damages. Therefore, the above limitations may not apply to you. This warranty gives you specific legal rights, and you may have other legal rights which may vary from state to state.



**Atwood®**  
**Atwood Mobile Products LLC**  
1120 North Main Street • Elkhart, IN 46514  
**PHONE:** 574•264•2131 **FAX:** 574•262•2550  
**INTERNET:** <http://www.atwoodmobile.com>