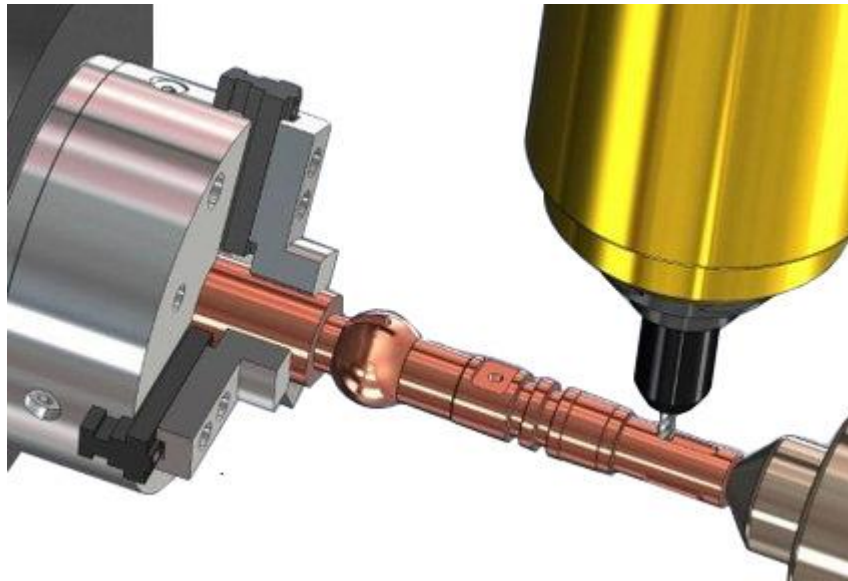




Installation Guide



CAMWorks 2017



Disclaimer

Geometric Americas, Inc. makes no warranties, either express or implied with respect to this manual. Geometric Americas, Inc. reserves the right to revise and improve products as it sees fit, and to revise the specifications and information contained herein without prior notice. Due to continuing product development, specifications and capabilities described in this manual are subject to change without notice.

Trademarks

The following and other product names and corporate references herein are registered or proprietary trademarks of their respective owners.

CAMWorks® is a registered trademark of Geometric Americas, Inc.

All other brands and names are property of their respective owners.



Copyright © 2016 Geometric Americas, Inc. All Rights Reserved.



Product Name:

CAMWorks 2017 SP0



TABLE OF CONTENTS

1. CAMWorks: Introduction	5
What is CAMWorks?	5
Registering on the CAMWorks Website (For first time users)	5
CAMWorks Installers	5
Steps involved in getting CAMWorks Installation files	5
2. System Requirements.....	6
Supported Microsoft Windows® Operating Systems	6
Supported CAD applications.....	6
Hardware Requirements.....	6
Software Pre-requisites	7
Microsoft Access®	7
Installing MS Access 2010 SP2 Runtime	7
Adobe Reader	7
3. CAMWorks Installation Info.....	8
Latest CAMWorks Version	8
CAMWorks Setup Program	8
4. Installing CAMWorks	9
Getting CAMWorks Installer Package	9
Running the CAMWorks Installation Wizard	9
5. Important Settings after CAMWorks Installation	16
Installing CAMWorks License Manager on Server for Floating License	16
Activating the CAMWorks License	17
Installing/ Upgrading multiple versions of CAMWorks	17
Launching CAMWorks within the CAD application	19
Technology Database (TechDB) Settings and Updates	21
TechDB Settings (For First-time users)	22
TechDB Settings after upgrading existing CAMWorks Installation	22
Customization after CAMWorks Installation	22
Customized Post Processors.....	22
Customizing Technology Database	23
Adding EDM Machines and Models.....	23
Getting Help/Troubleshooting: CAMWorks Support	23
Installing Optional Programs	23
Uninstalling CAMWorks & Associated software utilities	24
Uninstalling CAMWorks	24



Uninstalling Software Utilities that were installed with CAMWorks	24
Appendix A: Downloading CAMWorks Installer Package	25
Step 1: Download Installer Package from CAMWorks website	25
Step 2: Unzip the downloaded CAMWorks Installer Package zip folder	27
Appendix B: Installing MS Access 2010 SP2 Runtime	29
Steps to install MS Access Runtime Version	29
Warning Messages encountered when installing MS Access Runtime	32
Appendix C: Installing Optional Programs	34
Universal Post Generator	34
Licensing for Universal Post Generator	34
Installing Universal Post Generator by downloading Installer	34
NESTINGWorks	35
Licensing For NESTINGWorks	35
Installing NESTINGWorks by downloading Installer	35
eDrawings	36
Creating eDrawings files	36
Versions of eDrawings application	37
Licensing For eDrawings	37
Installing eDrawing application	37



1. CAMWORKS: INTRODUCTION

What is CAMWorks?

CAMWorks is a CAM application developed by Geometric Americas, Inc. It works as an Add-in in CAD applications of *SOLIDWORKS* and/or *CAMWorks Solids*. CAMWorks works seamless within the *SOLIDWORKS/CAMWorks Solids* environment.

This Installation Guide Manual gives detailed information on the various aspects involved in installing/upgrading the CAMWorks application.

Registering on the CAMWorks Website (For first time users)

When you become a CAMWorks customer, you will receive a unique *CPD (Copy Protection Device) ID* number from *Geometric*. This CPD number is required for registering on the CAMWorks website.

Follow the link <http://www.camworks.com/registration/> to create your Login ID.

CAMWorks Installers

CAMWorks Installation files can be downloaded from www.camworks.com. You will need a valid login to access the installation files. Contact your reseller if you need help with the registration to www.camworks.com.

Steps involved in getting CAMWorks Installation files

- a) If you do not have login credentials to www.camworks.com, then register on CAMWorks website. You need valid CPD ID to register. Contact your CAMWorks Reseller for CPD ID.
- b) Login using your registered Login ID and password.
- c) Follow [Downloads Area](#) link to get a list of downloads.
- d) Find the version you want to download and click on the corresponding link to download the *CAMWorks Installer Package*.

Note:

Refer [Appendix A](#) for details on how to download the CAMWorks Installer Package.



2. SYSTEM REQUIREMENTS

Before installing *CAMWorks 2017*, ensure that the following system requirements are fulfilled:

Supported Microsoft Windows® Operating Systems

- 64-bit version of Windows 10
- 64-bit version of Windows 8.1
- 64-bit version of Windows 7 (SP1 or higher)

** Home editions of the above Operating Systems are not supported.

Supported CAD applications

CAMWorks runs as an Add-in within SOLIDWORKS® or CAMWorks Solids. The following versions of CAD applications support **CAMWorks 2017x64**:

- 64-bit version of SOLIDWORKS 2017
- 64-bit version of SOLIDWORKS 2016
- 64-bit version of CAMWorks Solids 2016

Note: 64-bit version of CAMWorks Solids 2017 will be supported in a future version.

Hardware Requirements

RAM	8 GB or more recommended
Video Card	Certified cards and drivers
Processor	Intel or AMD processors with SSE2 support. 64-bit operating system required.
USB port	User may choose to have CAMWorks license on a USB dongle (key). CAMWorks Hardware dongle (key) plugs into the USB port.
Network	Microsoft's Windows Networking and Active Directory network environments.
Install Media	DVD Drive or Broadband Internet Connection



Software Pre-requisites

Microsoft Access®

CAMWorks requires any one of the following versions of Microsoft Access (Full or Runtime) for the functioning of its Technology Database™:

- MS Access 2007 (32-bit version)
- MS Access 2007 SP3 Runtime (32-bit version)
- MS Access 2010 SP1 (32-bit and 64-bit versions)
- MS Access 2010 SP2 (32-bit and 64-bit versions^[recommended])
- MS Access 2013 SP1 (32-bit and 64-bit versions)
- MS Office 365 with Office 2013 (32-bit and 64-bit versions)
- MS Access 2016 (32-bit and 64-bit versions)

Note: *Microsoft Access 2010 x64 SP2 is found to be the most stable version (Runtime or Full) to be used for CAMWorks Technology Database.*
If the Technology Database is shared on a network drive instead of the local drive, then the minimum compatible version of MS Access required is MS Access 2010 SP2 (Runtime or Full).

Installing MS Access 2010 SP2 Runtime

- Installer for Runtime version of *Microsoft Access 2010 SP2* can be downloaded from the [Miscellaneous Downloads section in Downloads Area](#) of the [CAMWorks website](#).
- Within the [CAMWorks Installer Package](#), run the installer within the **AccessRuntime** sub-folder to install Runtime version of *Microsoft Access 2010 SP2*. (Refer [Appendix B](#) of this document.)

Adobe Reader

The CAMWorks Manuals and other documents are in PDF format. The Adobe Reader or equivalent application is necessary to view, read, navigate, search and print the CAMWorks Manuals.

To access the CAMWorks Tutorials, after CAMWorks is installed, select **Start** on the Windows taskbar and select **All Programs>>CAMWorks201Xx64>>Manuals**.



3. CAMWORKS INSTALLATION INFO

Latest CAMWorks Version

The latest version of CAMWorks 2017 available on the CAMWorks website (<http://www.camworks.com>) is **CAMWorks2017x64-SP0**. CAMWorks website lists older versions and the Service Packs too.

CAMWorks Setup Program

The CAMWorks installer installs the following:

- **CAMWorks Application and system files**

These files are typically installed at **Drive:\Program Files\CAMWorks2017x64**

- **The Help Manuals in Adobe PDF format**

- **Data files:**

- Technology Database files (TechDBForms.mde, TechDB.mdb and ReportDatabase.mdb)
- API Files
- Sample part models and assemblies.
- Example Parts and assemblies
- EDM Cutting Conditions
- Tutorial post processors. (To obtain [customized post processors](#) for your machine tools, contact your CAMWorks Reseller.)

These files are typically copied at **Drive:\CAMWorksData\CAMWorks2017x64**

- **Ancillary Software Programs/ Utilities:**

- **CAMWorks Feed and Speed Library** (*This Feed/Speed Library has a modifiable database containing over 1.7 million combinations representing over 1100 materials. CAMWorks accesses this library to automatically calculate feeds and speeds.*)
- **Hardware Dongle License Driver** (*Sentinel 7.6.8*)
- **CAMWorks License Manager** (*Essential for managing the license*)
- **CAMWorks Virtual Machine** (*Machine Simulation application*)
- **CAMWorksView** (*3D CAMWorks data viewer application*)




4. INSTALLING CAMWORKS

Getting CAMWorks Installer Package

- If you are a first-time user of CAMWorks, then register yourself on the CAMWorks website and create your Login ID as explained in the section: [Registering on the CAMWorks website](#) in [Chapter 1](#) of this manual.
- Follow the steps given in [Appendix A](#) of this manual to download the zip package containing CAMWorks Installation files.

Running the CAMWorks Installation Wizard

Given below are the steps to be followed in the *CAMWorks Installation Wizard* when installing CAMWorks. Follow the simple instructions given in the *Installation Wizard* to complete the installation process of the CAMWorks components.

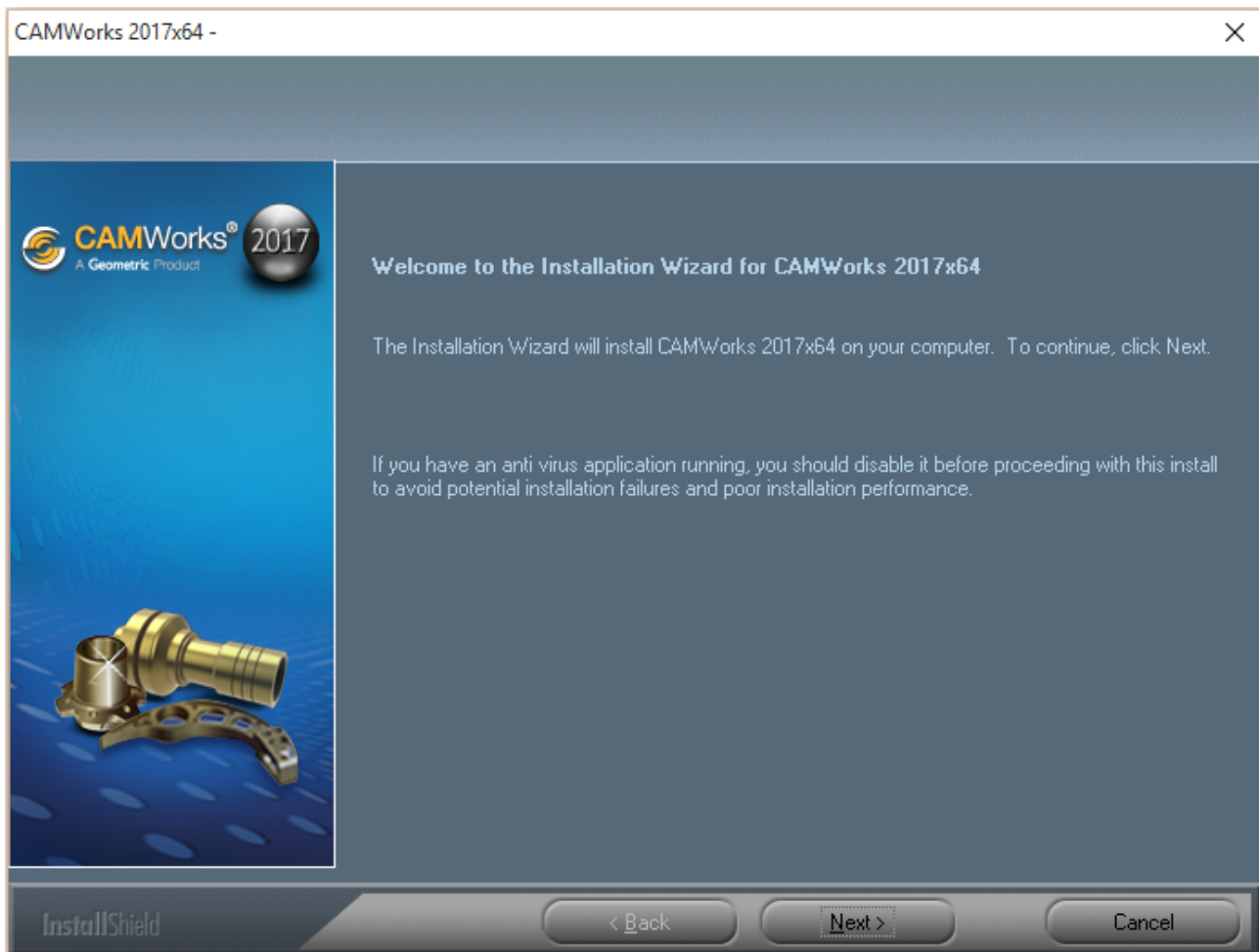
1. Ensure that the system meets the [System Requirements](#) on the machines on which you intend to run CAMWorks.
2. Unzip the downloaded CAMWorks Installer Package and copy it to a drive on the system.
3. Open the unzipped *CAMWorks Installer Package* folder and run the *CAMWorks 2017* installer ( CAMWorks2017x64-XX.exe).

Note:

- For the hassle free installation, it is recommended that you copy the whole unzipped Installation Package folder to the local machine.
- Do not use mapped drives to launch the CAMWorks installer.



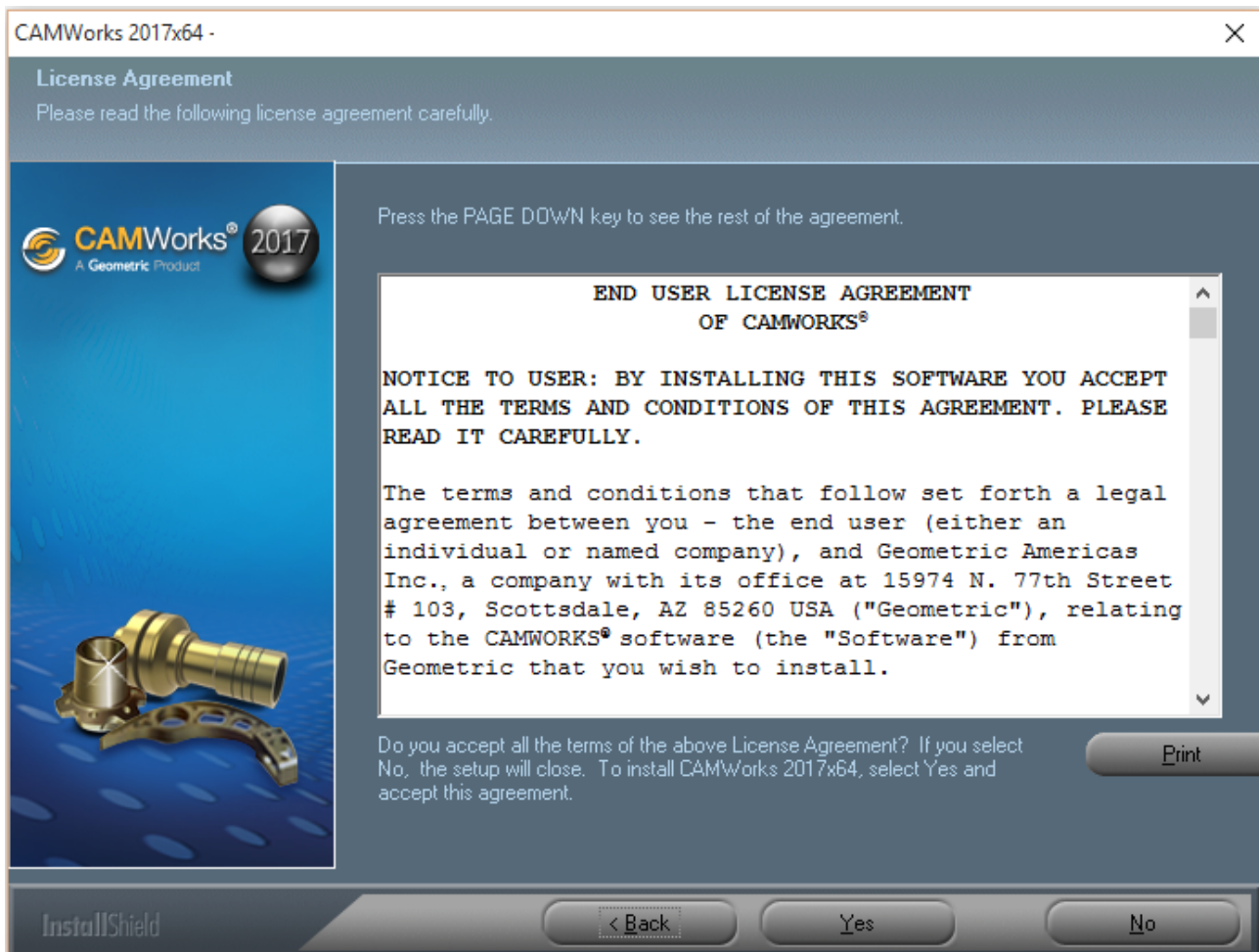
4. When the *Installation Wizard* is displayed, click the **Next** button.



Welcome Screen of CAMWorks installation Wizard



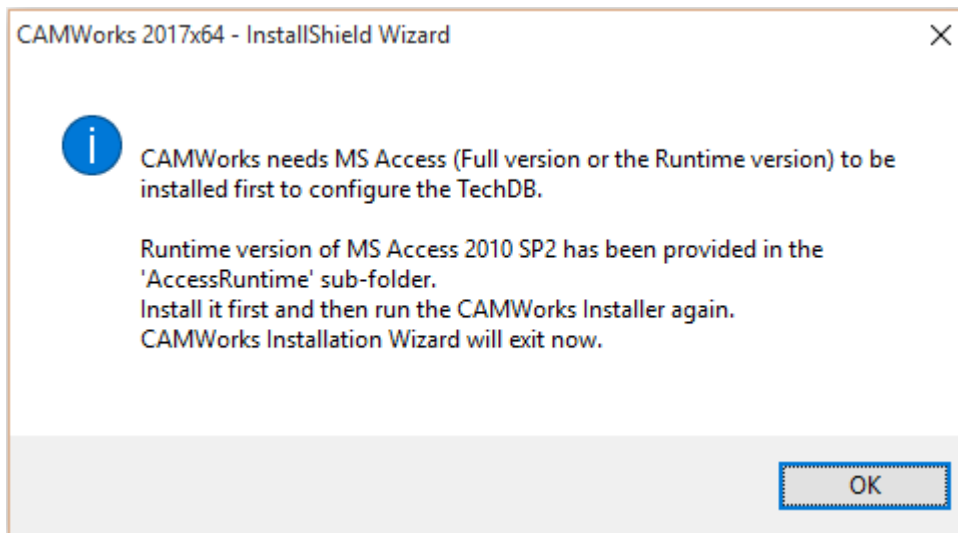
5. The *Installation Wizard* will then display the **End User License Agreement** for CAMWorks. Click the **Yes** button to proceed.



End User License Agreement displayed within CAMWorks Installation Wizard

6. The *Installation Wizard* will scan your system to detect the presence of a [supported version of Microsoft Access](#).
 - a. If a supported version is not detected, then the *Installation Wizard* will display a message indicating that a Full or Runtime version of **Microsoft Access** is needed for configuring the Technology Database (TechDB) of CAMWorks.

The *CAMWorks Installation Wizard* will terminate the installation process when you will click the OK button in this message.



Message displayed when Microsoft Access application is not detected during the CAMWorks Installation Process

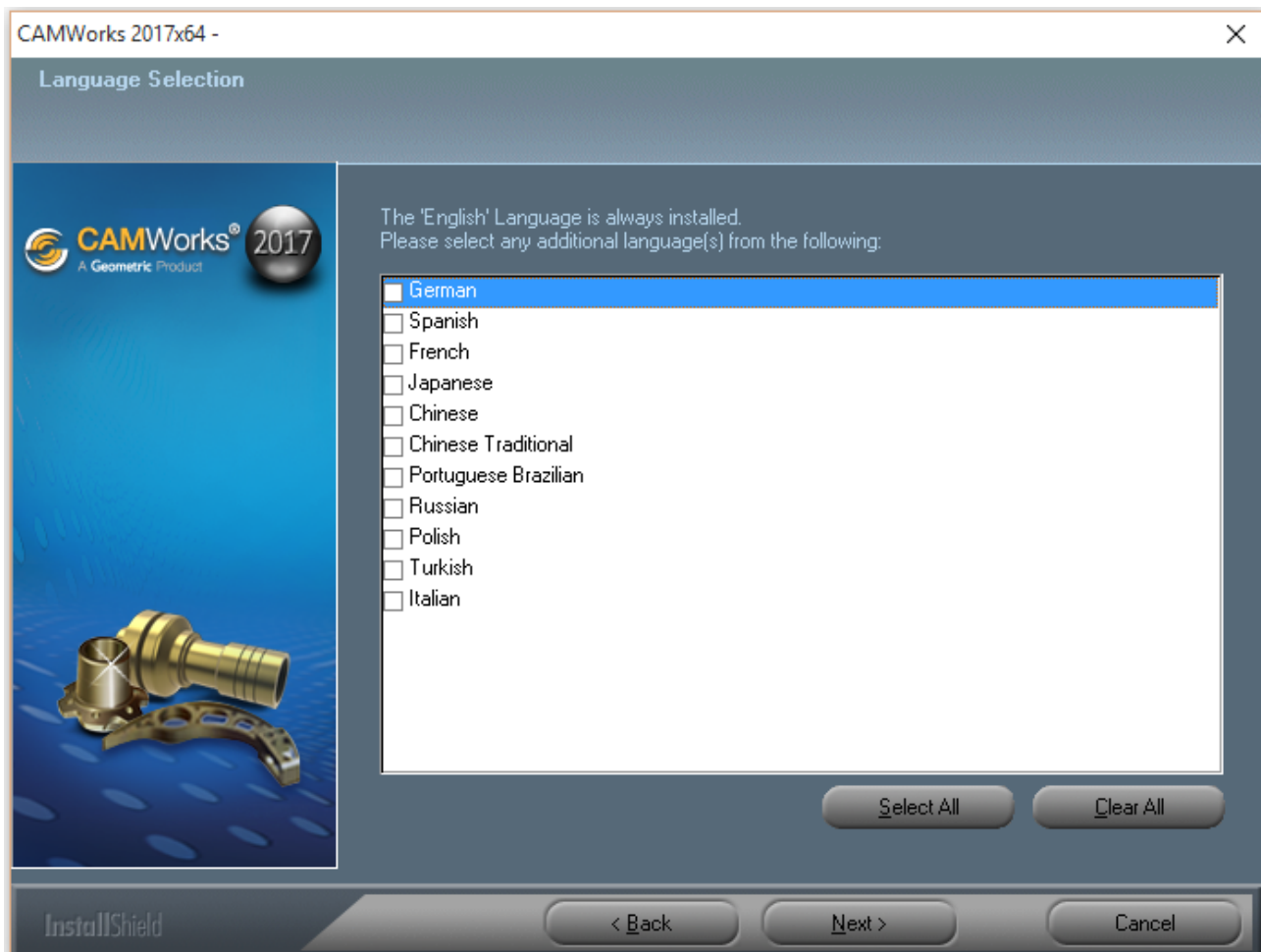
Note:

Within the CAMWorks Installer package, the **AccessRuntime** sub-folder contains the **CAMWorks - MS Access 2010 x64 Runtime SP2.exe** installer. Run this installer in order to install a Runtime version of *Microsoft Access 2010 SP2*.

Please refer [Appendix B](#) of this Guide for instructions on how to install this Runtime version of *MS Access 2010 SP2* from the *AccessRuntime* folder of the CAMWorks Installer Package.

- b. If a compatible/supported version of *MS Access* is detected on your system, then the *Installation Wizard* will proceed to the next step of *Language Selection*.

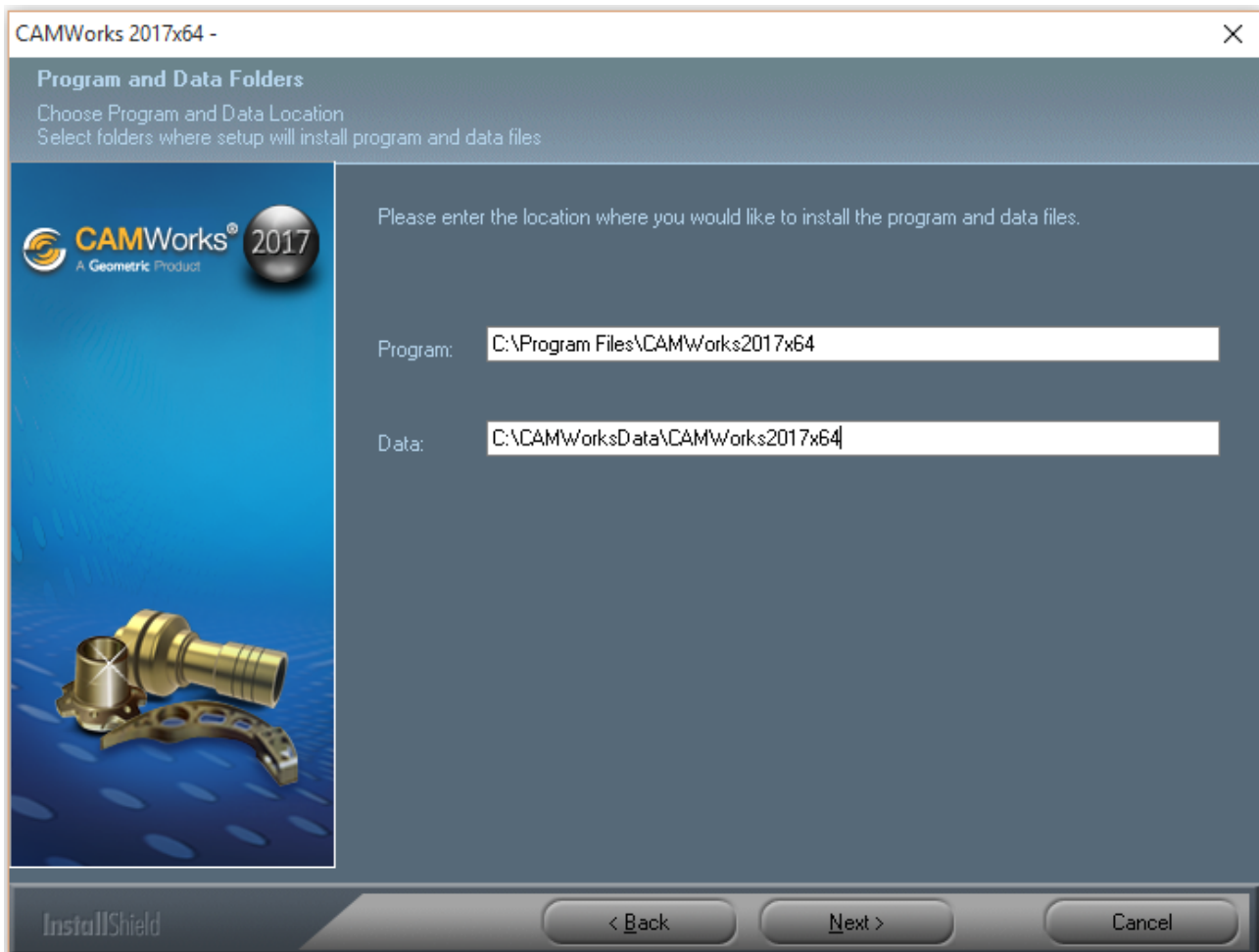
- 7. The *Installation Wizard* will now display the **Language Selection** options. By default, the English language version of CAMWorks is always installed. If you wish to install any additional languages, choose those languages from the available options and click **Next**.



Language Selection Options within the CAMWorks Installation Wizard

8. The *Installation Wizard* will prompt you set the location for the CAMWorks installation files and data files. Default locations will be displayed within the **Program and Data Folders** page of the *CAMWorks Installation Wizard*.

You can either retain these default locations or change the folder locations for these files and click **Next**.

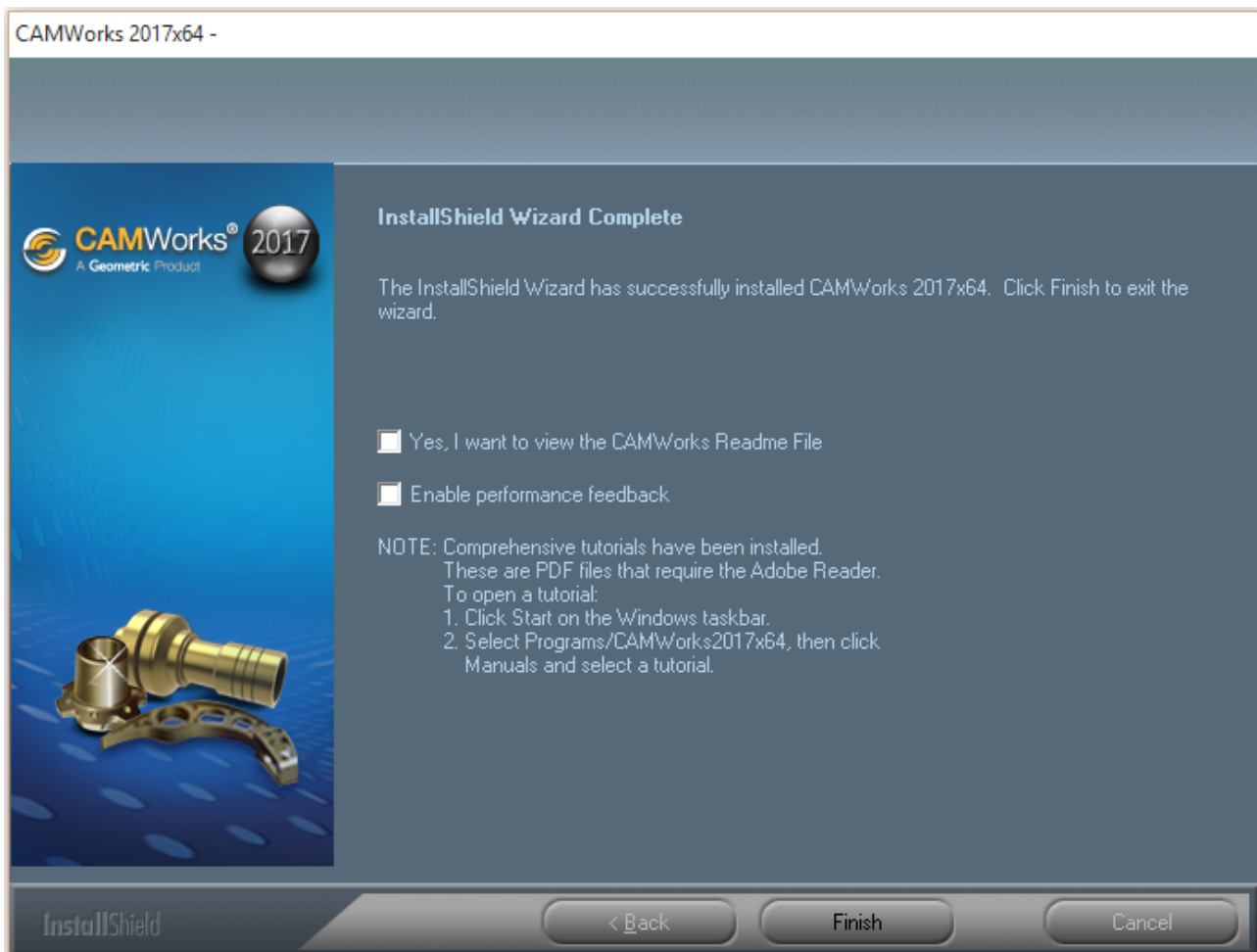


Set folder locations for CAMWorks Installation Files and Data files

9. The following software applications will also be automatically installed by the *CAMWorks Installation Wizard*:

- *CAMWorks License Manager*
- *CAMWorksView*
- *CAMWorks Virtual Machine*

10. Once the installation is complete, click the ***Finish*** button to exit the Wizard.



Click 'Finish' button once installation is complete to exit the CAMWorks Installation Wizard

11. If you purchased a floating (multi-user) license, then repeat above steps on all the systems on which you intend to run the CAMWorks application.



5. IMPORTANT SETTINGS AFTER CAMWORKS INSTALLATION

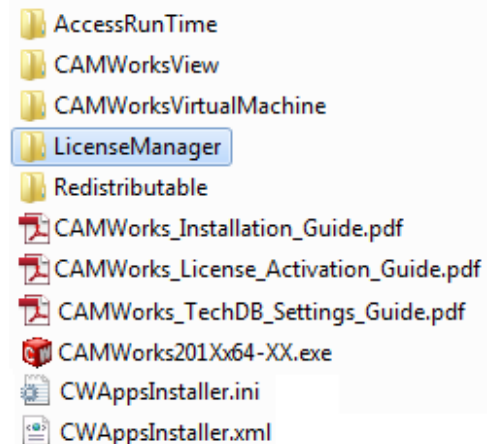
Installing CAMWorks License Manager on Server for Floating License

The *CAMWorks Installation Wizard* installs the **CAMWorks License Manager** utility along with the CAMWorks application. This utility is a requisite for CAMWorks License management/activation/upgradation on all machines on which the CAMWorks application is installed.

If you have purchased a floating (i.e. multi-user) license, then you need to designate one of the machines on your network as the *CAMWorks License Server*. If you do not plan to install CAMWorks on this server machine and intend to use it only for CAMWorks Licensing, then you need to install the *CAMWorks License Manager* utility on such a designated sever machine.

Following are the steps:

1. From the downloaded **CAMWorks Installer Package**, copy the sub-folder **LicenseManager** to the machine designated as the *CAMWorks License Server*.
2. After copying, open the *LicenseManager* folder.
3. Run **CWLICENSEManager_XXXXXXXXX.exe** within this folder.
4. Follow the simple steps given in the *Installation Wizard* to complete the installation.
5. After installation, to launch the **CAMWorks License Manager** utility on the server, click on the Windows *Start menu* and select *All Programs>>CAMWorks License Manager*.
6. Under this folder, right-click on **CWLICENSEManager** and select **Run as Administrator** on the context menu.
7. The *CAMWorks License Manager* User Interface will be displayed. Refer *Chapter 5* of the **CAMWorks_License_Activation_Guide.pdf** document in the *CAMWorks Installer Package* for detailed information on how to configure the floating network license on the *CAMWorks License Server* and client machines.



Copy the 'LicenseManager' folder to Server machine



Note:

If you are upgrading your existing CAMWorks Installation by running the installer, it is highly recommended that you also upgrade the *CAMWorks License Manager* utility installed on the CAMWorks License Server by following the steps mentioned above.

Existing License Server settings will be retained while the *CAMWorks License Manager* utility is upgraded.

Not upgrading the *CAMWorks License Manager* utility installed on the License Server can lead to troubleshooting issues.

Activating the CAMWorks License

The CAMWorks application requires a valid license for running. Depending on your requirements, you can purchase a standalone (for single-user) or floating network (for multiple users) license from your CAMWorks Reseller.

Once the CAMWorks application is installed for the first time, the next step is to activate the license. License Activation is covered in the ***CAMWorks_License_Activation_Guide.pdf*** document. This document is present in the *CAMWorks Installer Package*. After installing CAMWorks, you can also access this document from the Windows *Start menu* by selecting *All Programs>>CAMWorks2017x64>>Manuals>>License Activation Guide*.

Based on the license type that you have purchased, read the applicable section of this document to learn how to activate your *CAMWorks* license.

Note:

The license settings for CAMWorks will be retained when you upgrade your existing CAMWorks installation. You need to reset your CAMWorks license settings only when your current license or *Update Support Plan* expires.

Installing/ Upgrading multiple versions of CAMWorks

- Major CAMWorks versions (example: *CAMWorks 2015*, *CAMWorks 2016*, *CAMWorks 2017*, etc.) are released periodically. Service Pack upgrades for these major versions too are periodically released. You can have multiple major versions of CAMWorks installed on one machine, but you can have only one Service Pack of a major CAMWorks version installed at one time.



Example 1:

You can have *CAMWorks 2017* and *CAMWorks 2016* installed on the same machine but you cannot have multiple Service Packs on *CAMWorks 2016* on the same machine.

- If you have installed a new annual *CAMWorks version* when a previous annual version is already present on your system, then the new version will be installed as a fresh installation. Older annual versions of CAMWorks cannot be upgraded to the newer versions. Only service packs of an annual version can be upgraded.

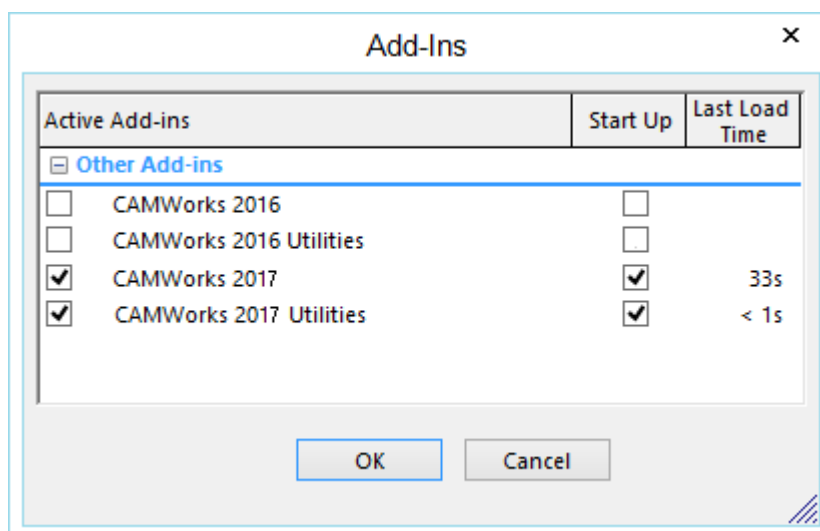
Example 2:

If you have *CAMWorks 2016 SP1* installed on the machine, then you can upgrade it to *CAMWorks 2016 SP2* or any newer service pack released for this annual version.

Example 3:

If you have *CAMWorks 2016* installed on the machine, then *CAMWorks 2017* will get installed as a separate product. You cannot upgrade *CAMWorks 2016* to *CAMWorks 2017*.

None of the existing files for *CAMWorks 2016* will be overwritten. Both *CAMWorks 2016* and *CAMWorks 2017* will be listed as separate Add-Ins within *SOLIDWORKS/ CAMWorks Solids*. You can run either version of CAMWorks by selecting the desired version from the *SOLIDWORKS/ CAMWorks Solids Add-Ins*.



CAMWorks Releases listed separately in Add-Ins Manager of SOLIDWORKS/CAMWorks Solids




Launching CAMWorks within the CAD application

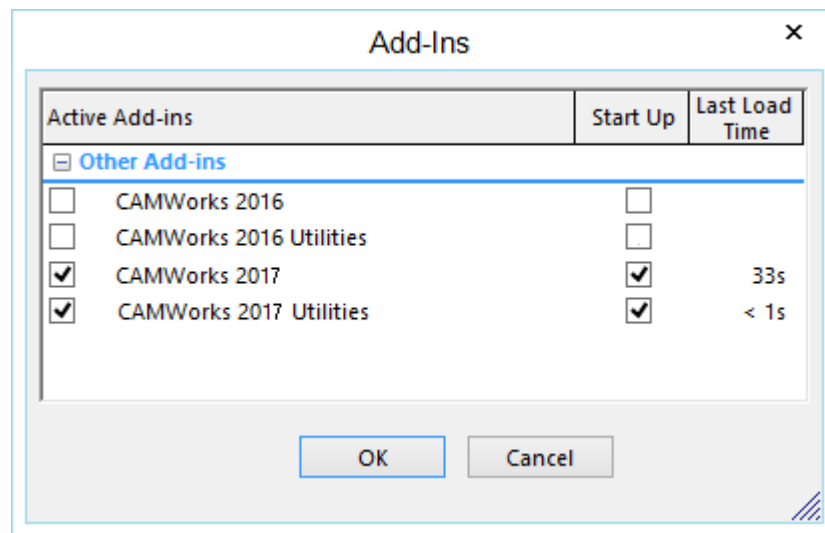
CAMWorks is fully integrated into *SOLIDWORKS/CAMWorks Solids* and gets loaded automatically as an Add-In in the *SOLIDWORKS/CAMWorks Solids* environment.

1. After you install *CAMWorks 2017*, activate the *CAMWorks* License in case it is not already activated. Refer the section [Activate the CAMWorks license](#) of this manual for details.
2. Launch *SOLIDWORKS/CAMWorks Solids*. The *CAMWorks* logo will be displayed to indicate that *CAMWorks 2017* has also been launched as an Add-In within the *SOLIDWORKS/CAMWorks Solids* environment.



Logo displayed when CAMWorks is launched within SOLIDWORKS

3. If the *CAMWorks* logo does not display, it usually indicates that *CAMWorks* was not launched as an Add-In within *SOLIDWORKS/CAMWorks Solids*. In such a case:
 - i. Click on the  **Options** button on *SOLIDWORKS/CAMWorks Solids* and select **Add-Ins** from the dropdown menu.
 - ii. The **Add-Ins** dialog box is displayed. If *CAMWorks 2017* is listed in **Active Add-Ins**, then it indicates that it was successfully installed.



**CAMWorks 2017 Release listed in Add-Ins of
SOLIDWORKS/ CAMWorks Solids**

- iii. Place a check in the checkbox to the left of *CAMWorks 2017* listed in *Active Add-Ins*.
 - iv. Click *OK* to close the dialog box. *CAMWorks 2017* will now be launched within the *SOLIDWORKS/ CAMWorks Solids* environment.
4. Open a part file or start a new part document in *SOLIDWORKS/CAMWorks Solids*.
 5. The *CAMWorks Command Manager* will display in the *Command Manager* area. Tabs for accessing the CAMWorks Machining trees are available in the vertical toolbar on the left.

Note: To learn how to use CAMWorks, we recommend that you go through the exercises given in the CAMWorks tutorials. To open a tutorial, select **Start** on the Windows Task bar, then select **All Programs>> CAMWorks2017x64>>Manuals** and pick the applicable tutorial.

7. A valid license is needed to run CAMWorks. If you have not activated the license or if valid license is not available, then following dialog box will be displayed:



Dialog box displayed when valid CAMWorks license is not detected

Use this form to either request a license or to configure a license. Refer to the *License Activation Guide* for details. To open this document, click on the Windows *Start menu* and select *All Programs>>CAMWorks2017x64>>Manuals>>License Activation Guide*.

Technology Database (TechDB) Settings and Updates

The **TechDB™**, a **Microsoft Access database**, is the intelligence behind the machining automation in CAMWorks. Settings for TechDB are given in the ***TechDB_Settings_Guide.pdf*** document. This document is present in the *CAMWorks Installer Package*. After installing CAMWorks, you can also access this document from the Windows *Start menu* by selecting *All Programs>>CAMWorks2017x64>>Manuals>>TechDB Settings Guide*.



TechDB Settings (For First-time users)

TechDB settings will need to be customized in the following cases:

- For sharing TechDB on a network drive
- After the licensing mechanism of the floating network is activated, for creating a common Technology Database repository for all the client machines
- For using a SQL-based TechDB instead of MS Access based TechDB

Refer *Chapter 2* of the ***TechDB_Settings_Guide.pdf*** document for details.

TechDB Settings after upgrading existing CAMWorks Installation

If you have existing version of CAMWorks and you installed/upgraded a newer CAMWorks Release or Service Pack, then you will need to import customized data present in the previous version of CAMWorks to the new version.

To understand the steps for importing TechDB data, refer *Chapter 3* of the ***TechDB_Settings_Guide.pdf*** document.

Customization after CAMWorks Installation

Customized Post Processors

When you install CAMWorks, post processor files that are intended for use with the CAMWorks Tutorials are also installed. These files are installed in the **Posts** folder inside your CAMWorks Data folder.

Example: *Drive:\CAMWorksData\CAMWorks2017x64\Posts*

These example post processors are meant for sample machines and may sometimes not suit your actual machining requirements. In such a case, you need to procure customized post processors to suit your requirements.

Note: **Contact your authorized CAMWorks Reseller for more information on obtaining and/or customizing post processors for your machine tools. Additional mill and turn post processor files (.lng and .ctl files) can be installed in any folder with write permissions.**



Customizing Technology Database

The **TechDB™**, a **Microsoft Access database**, is the intelligence behind the machining automation in CAMWorks.

The Technology Database supplied with CAMWorks contains data that is considered generally applicable to most machining environments. In order to gain full advantage of CAMWorks, you need to customize the TechDB data and input additional knowledge that represents your expertise and your facility's capabilities.

To understand how to customize the data within the Technology Database, refer to the *Technology Database Tutorial*. This PDF document can be accessed from Windows *Start* menu by selecting **Start>>All Programs>>CAMWorks 2017x64>>Manuals>>Technology Database Tutorial**.

Adding EDM Machines and Models

If you are using the CAMWorks module named *Wire EDM*, then after installing CAMWorks, you can add EDM Post files, machines and models as per your requirements. These steps are explained in detail in the **Appendix A: Linking EDM Post Files & Adding EDM Machines/Models** section of the *Wire EDM Tutorial manual*. After installing CAMWorks, this manual can be accessed from the Windows *Start* menu by selecting **All Programs>>CAMWorks2017x64>>Manuals>>Wire-EDM Tutorial**.

Getting Help/Troubleshooting: CAMWorks Support

In case you face any issues related to installation, license activation or using CAMWorks, you can contact your CAMWorks Reseller. Your reseller is your single-point contact for all issues concerning the CAMWorks application and associated utilities.

Installing Optional Programs

A number of Optional programs which work in supplementary capacity to CAMWorks are available on the CAMWorks website. Some of these software programs require a license in order to use them.

Refer [Appendix C: Installing Optional Programs](#) for a list of all such optional software programs along with their description, licensing info and installation info.



Uninstalling CAMWorks & Associated software utilities

Uninstalling CAMWorks

An existing version of *CAMWorks* can be uninstalled from the **Add/ Remove Programs** functionality of the Windows Control panel.

When you uninstall *CAMWorks*, the [Hardware Dongle License Driver](#) utility will also be automatically uninstalled.

Uninstalling Software Utilities that were installed with CAMWorks

With the exception of the [Hardware Dongle License Driver](#) utility, the following CAMWorks utilities/applications have to be separately uninstalled from the **Add/ Remove Programs** section of the **Windows Control panel** in case you wish to uninstall them:

- a. [CAMWorks License Manager](#)
- b. [CAMWorks Virtual Machine](#)
- c. [CAMWorks View](#)
- d. [CAMWorks Feed and Speed Library](#)
- e. [Microsoft Access](#)



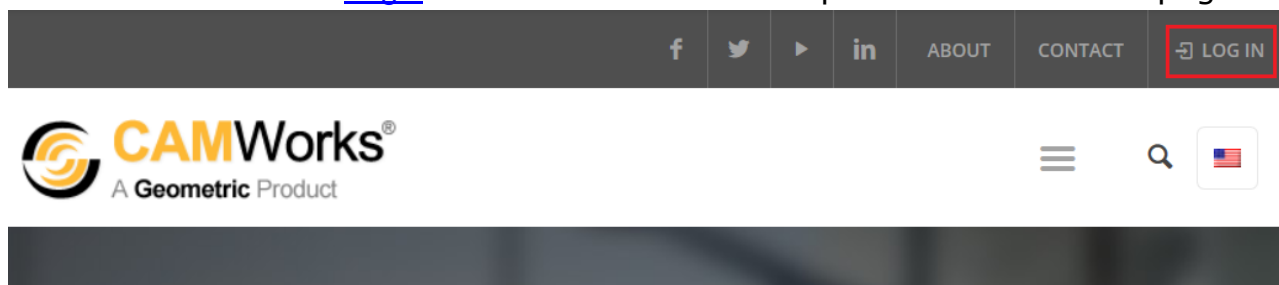
APPENDIX A: DOWNLOADING CAMWORKS INSTALLER PACKAGE

The CAMWorks Installer Package (zip file) which contains installers for the CAMWorks application, associated files and utilities is available in the [Downloads Area of the CAMWorks website](#).

Step 1: Download Installer Package from CAMWorks website

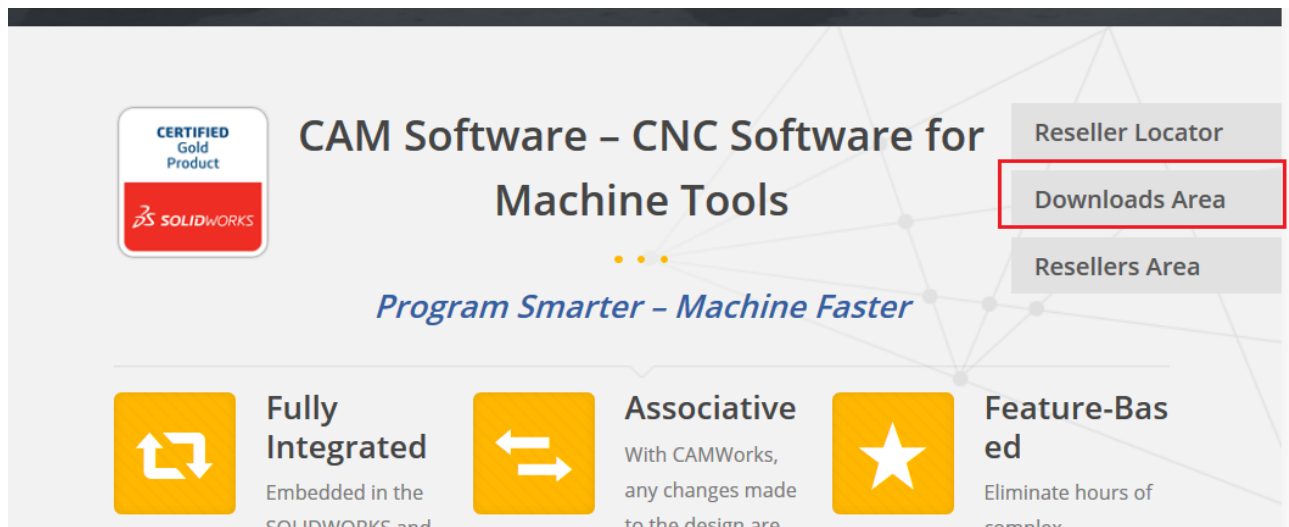
Following are the steps to download the CAMWorks Installer Package:

1. Open the website www.camworks.com.
2. Click on the [Login](#) link at the top of the webpage.

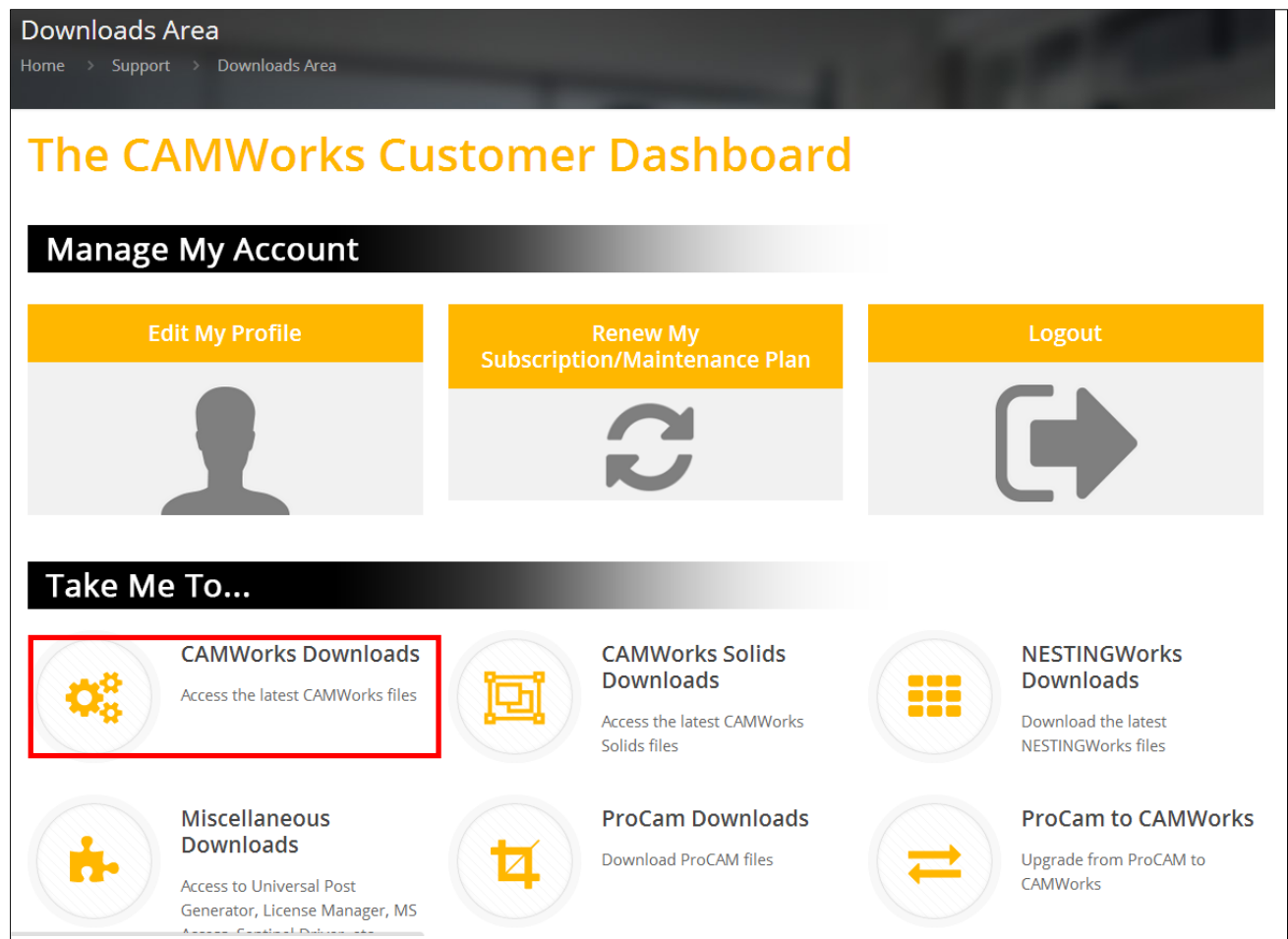


3. Login using the ***Username*** and ***Password***.

4. After successfully logging in, click on the ***Downloads Area*** link.



5. The **Downloads Area** page will be displayed. Click on the link for **CAMWorks Downloads**.



Click on the link for 'CAMWorks Downloads' on the web page



6. The [CAMWorks Downloads](#) webpage will be displayed. Click on the link for **CAMWorks 2017x64** or any other CAMWorks version that you wish to install.
7. Clicking on this hyperlink takes you to the section of the webpage containing links to download the following files associated with the CAMWorks 2017 application:
 - i. **64-bit installer package** of CAMWorks in .zip format.
This is the install file for CAMWorks
 - ii. PDF documents:
 - a. **What's New**
 - b. **Release Notes**
 - c. **Resolved Issues**
 - d. **CAMWorks Installation Guide**
 - e. **CAMWorks License Activation Guide**
 - f. **CAMWorks TechDB Settings Guide**
8. The *CAMWorks Installer Package* (.zip file) can be downloaded directly on to the hard drive of the computer system on which you intend to run CAMWorks or it can be downloaded on a Network drive.

Step 2: Unzip the downloaded CAMWorks Installer Package zip folder








After you download the 64-bit *CAMWorks Installer Package* (which is in .zip file format) from the CAMWorks website, copy it to the system on which you intend to install/upgrade the CAMWorks application and unzip the downloaded zip file.

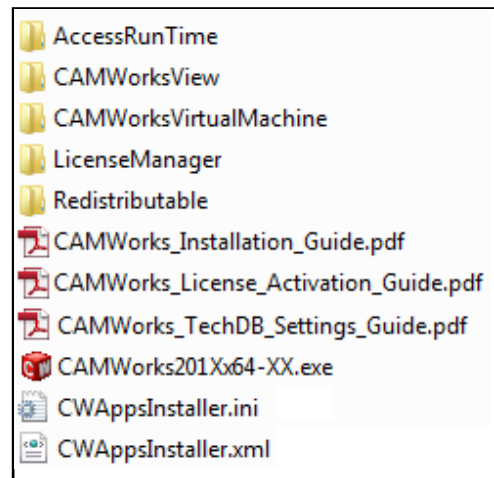
Note:

- For the hassle free installation, it is recommended that you copy the whole unzipped installation folder to the local machine on which you intend to install CAMWorks.
- Do not use mapped drives to launch the CAMWorks Installer on the local machine.



This unzipped folder is the **CAMWorks Installer Package** and contains the following:

1. The **AccessRuntime** folder containing the installer ( CAMWorks - MS Access 2010 x64 Runtime SP2.exe) for Runtime version of *Microsoft Access 2010 SP2* application.
2. The **CAMWorksView** folder containing the installer ( CAMWorksView201Xx64.exe) for *CAMWorksView* utility.
3. The **CAMWorksVirtualMachine** folder containing the installer ( CAMWorksVirtualMachine201Xx64.exe) for the *CAMWorks Virtual Machine* utility.
4. The **LicenseManager** folder containing the installer ( CWLicenseManager_xxxxxxxx.exe) for the *CAMWorks License Manager* utility.
5. The **Redistributable** folder
6. The 64-bit installer ( CAMWorks201Xx64-XX.exe) for installing the CAMWorks application.
7. Configuration settings files ( CWAppsInstaller.ini and  CWAppsInstaller.xml).
8. The **CAMWorks_Installation_Guide** in PDF format which explains how to install the CAMWorks application.
9. The **CAMWorks_License_Activation_Guide** in PDF format which explains how to activate/update the CAMWorks License.
10. The **CAMWorks_TechDB_Settings_Guide** in PDF format which explains how to setup the Technology Database.



Contents of the Downloaded Zip Folder



APPENDIX B: INSTALLING MS ACCESS 2010 SP2 RUNTIME FROM INSTALLER PACKAGE

MS Access 2007 (or a higher version) is a pre-requisite for running CAMWorks. When you run the *CAMWorks Installation Wizard*, it will scan your system to detect the presence of a [supported version of Microsoft Access](#). Installation of CAMWorks will commence only if a supported version of *MS Access* is detected.

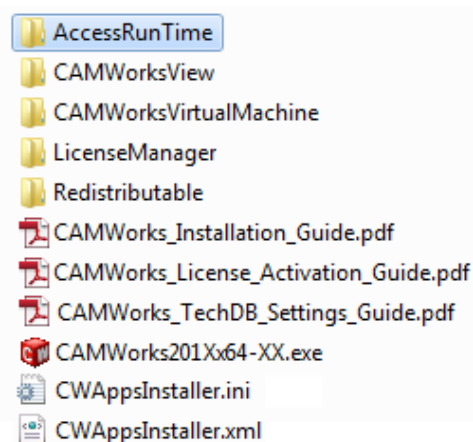
If a supported version is not detected, then the *Installation Wizard* will display a message indicating that a supported Full or Runtime version of *Microsoft Access* needed for configuring the Technology Database (TechDB) of CAMWorks wasn't found.

The *CAMWorks Installation Wizard* will terminate the installation process when you will click the *OK* button in this message.

This appendix explains how to install *MS Access 2010 SP2 Runtime* from the CAMWorks Installer Package.

Steps to install MS Access Runtime Version from CAMWorks Installer Package

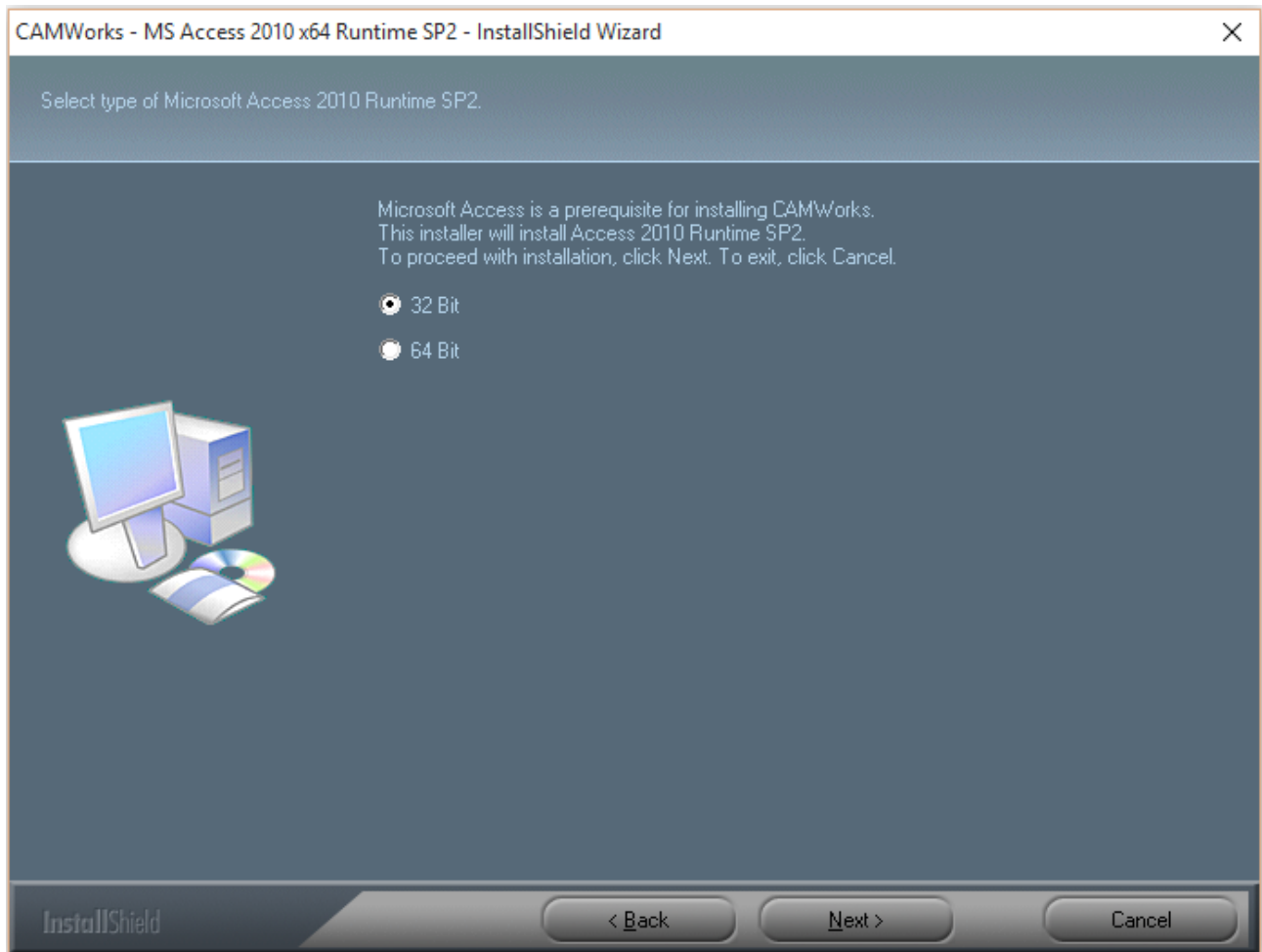
1. Copy the [downloaded CAMWorks Installer Package](#) to the system on which you want to run CAMWorks.
2. After copying, open the **AccessRuntime** folder within the *CAMWorks Installer Package*.
3. Run **CAMWorks - MS Access 2010 x64 Runtime SP2.exe** within this folder.
4. The installer will scan the system to detect for presence of any other *MS Access* version. Installation will commence only in any one of the following conditions is fulfilled:
 - If no other version of *MS Access* is found installed on the system.
 - If lower Runtime version of *MS Access 2010* (viz. SP0/SP1) is found installed on the system.
5. If any one of above conditions is fulfilled, then the *Welcome Screen* of the Installation Wizard will be displayed. Click *Next*.
6. The installer will then scan the system for the presence of *MS Office Suite*.



Copy the 'AccessRuntime' folder to Server machine



- If no *MS Office Suite* is found installed, the *Installation Wizard* will display a page prompting you to select the version (32-bit or 64-bit) of *MS Access 2010 SP2 Runtime*. Make the desired selection and click *Next*. Installation will commence.



Make selection of 32-bit or 64-bit version of MS Access Runtime you wish to install

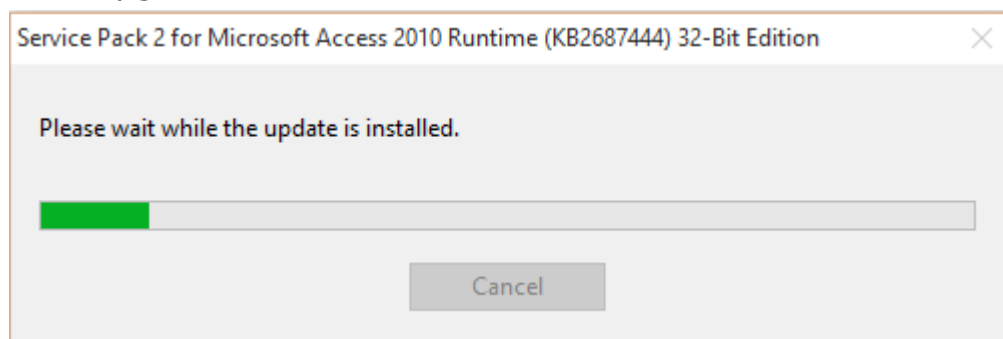
- If the installer detects a 32-bit version of *MS Office Suite* installed on the system, then installation of 32-bit version of *MS Access 2010 SP2 Runtime* will commence. Similarly, if 64-bit version of *MS Office Suite* is detected, then installation of 64-bit version of *MS Access 2010 SP2 Runtime* will commence.

Note:

64-bit version of MS Access 2010 SP2 Runtime cannot be installed on a system that has 32-bit version of MS Office Suite installed and vice versa.

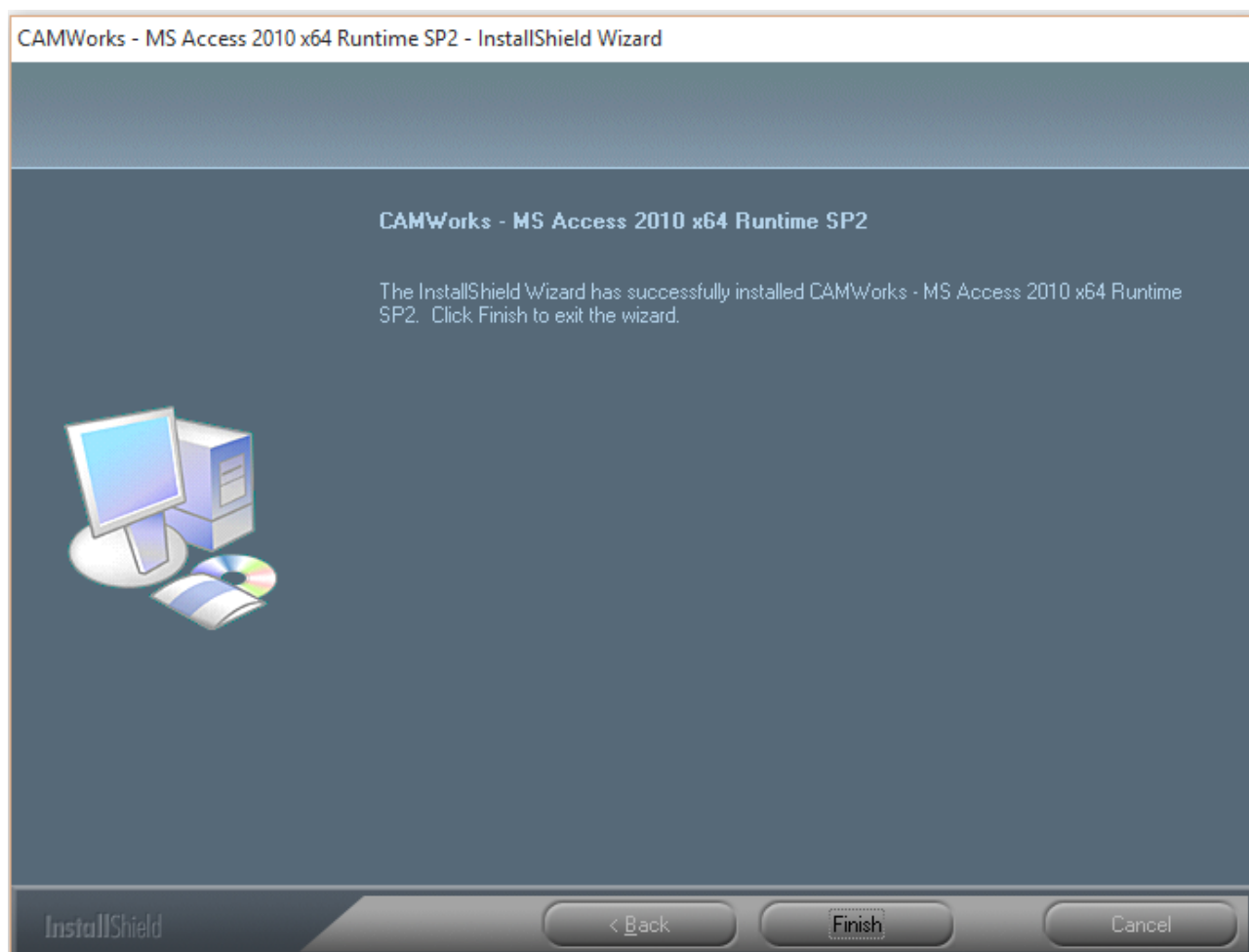


7. If a lower version of *MS Access 2010 Runtime* is found installed, then the installer will upgrade it to SP2.



Progress bar indicating upgrade MS Access 2010 Runtime version to SP2

8. Click the *Finish* button in the *Installation Wizard* once installation is complete.



Click the 'Finish' button once installation is complete

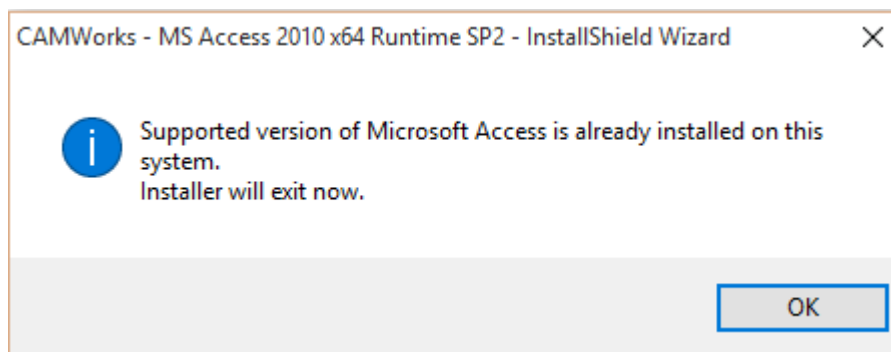
9. After installation of *MS Access 2010 SP2 Runtime* is completed, run the CAMWorks installer from the *CAMWorks Installer Package* to install CAMWorks.



Troubleshooting: Possible Warning Messages encountered when installing MS Access Runtime

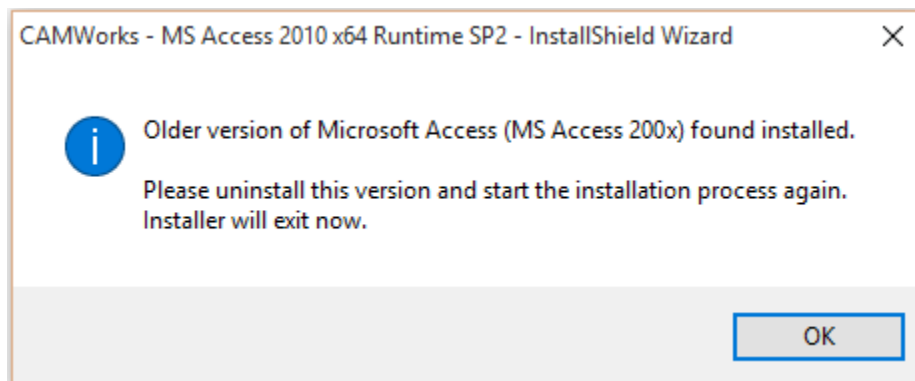
When you run the installer for installing *MS Access 2010 SP2 Runtime*, the installation will not proceed if the installer detects another or same version of *MS Access* installed. Given below are the possible scenarios where the installer will display a warning message and exit the installation process without installing *MS Access 2010 SP2 Runtime*:

- a) If your system already has a version of *MS Access* higher than *MS Access 2010 SP2* installed, then the installer will display a message indicating that a higher version is already installed. The installation process will terminate when you click the **OK** button within this message.



Warning message displayed when higher version of MS Access is already installed

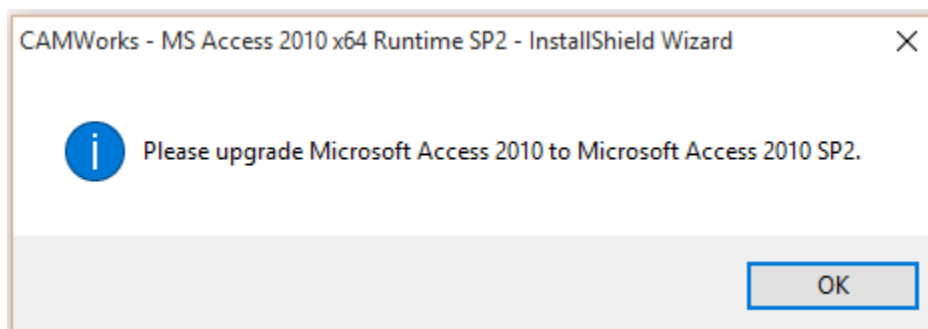
- b) If a Full or Runtime version of an older version is already installed on the system, then *MS Access 2010 SP2 Runtime* cannot be installed unless the older version is uninstalled from that system. In such a scenario, the installer will display a message indicating that the older version needs to be uninstalled before proceeding with the installation process. Uninstall the older version and then run the installer again.



Warning message displayed when unsupported version MS Access is found installed

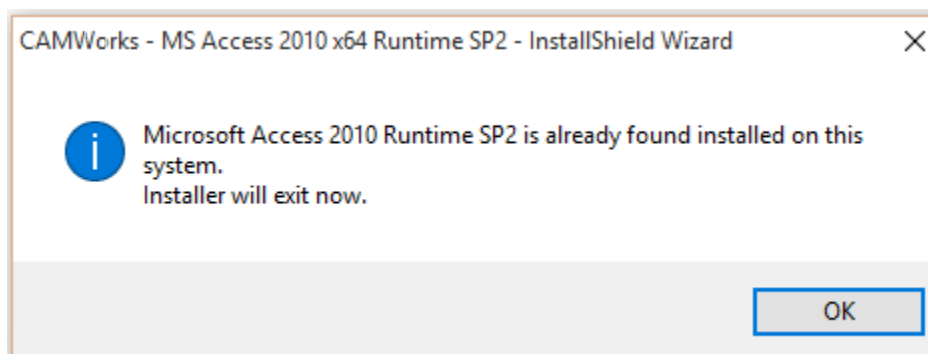


- c) *MS Access 2010 SP2 Runtime* cannot be installed on a system on which a lower Full version of *MS Access 2010* (such as *SP0* or *SP1*) is already installed. Hence, if your system already has a Full version of *MS Access 2010* installed that has not been upgraded to *SP2* Pack, then the installer will display a message indicating that a higher version is already installed. The installation process will terminate when you click the *OK* button within this message.



Warning message displayed when Full version of MS Access 2010 is already installed

- d) If a Full or Runtime version of *MS Access 2010 SP2* is already installed on the system, then the installer will display a message indicating that the supported version of MS Access is already installed. The installation process will terminate when you click the *OK* button within this message.



Warning message displayed when supported version of MS Access 2010 is already installed



APPENDIX C: INSTALLING OPTIONAL PROGRAMS

A number of Optional programs which work in supplementary capacity to CAMWorks are available on the [CAMWorks website](#). Some of these programs require licensing in order to run.

Given in this section is a list of all such optional software programs along with their description, licensing info and installation info.

Universal Post Generator

CAMWorks uses a post processor to convert information into machine tool specific NC code. Each post processor is designed to generate quality NC code that meets the requirements of the machine control. The *Universal Post Generator* allows you to customize the post processor for both basic and complex code generation requirements.

Licensing for Universal Post Generator

You don't need a separately purchased license to run the *Universal Post Generator*. To install this software, make sure you have CAMWorks installed on your system.

Installing Universal Post Generator by downloading Installer

The *Universal Post Generator* application is provided as an Optional program in the CAMWorks DVD. Optionally, the latest version of *Universal Post Generator* application can be downloaded from the CAMWorks website.

Following are the steps to download and install *Universal Post Generator* from the CAMWorks website:

1. Open the website www.camworks.com
2. Login using your **Username** and **Password**. In case you don't have them, then [register on the CAMWorks website](#) as explained in [Chapter 1](#) of this manual.
3. When you successfully login, the **Downloads Area** will be displayed. Click on the link for **Miscellaneous Downloads**.
4. The *Miscellaneous Files Downloads* webpage is displayed. Click on the hyperlink for **Universal Post Generator** in order download the installer.



5. After downloading the installer, run the installer and follow in instructions given in the Installation Wizard in order to install the program.

NESTINGWorks

NESTINGWorks is an automatic, true-shape nesting program from Geometric Americas, Inc. that easily creates fast and efficient nested layouts. NESTINGWorks uses NestLib®, one of the fastest and most capable automatic true-shape nesting technology engines available in the industry. It is seamlessly integrated within *SOLIDWORKS/CAMWorks Solids* and allows nesting of flat or 3D solid or sheet metal parts and assemblies. The nested output is a *SOLIDWORKS* assembly file for each unique sheet layout. NESTINGWorks can be used to create efficient layouts of metal, wood or composite based materials, producing the maximum number of parts from a single piece of raw material within minutes.

Note:

- **The NESTINGWorks application is available only in the English Language version.**
 - **The NESTINGWorks application is available only in 64-bit versions.**
-

Licensing For NESTINGWorks

NESTINGWorks cannot be run in the absence of a valid license. *Geometric Americas Inc.* does not provide any Trial period license or Evaluation license for the *NESTINGWorks* application. You will have to procure the license named **Nesting** from your authorized Reseller in order to use the NESTINGWorks application.

Installing NESTINGWorks by downloading Installer

The *NESTINGWorks* application is provided as an Optional Program in the CAMWorks DVD. Optionally, the latest version of NESTINGWorks application can be downloaded from the CAMWorks website.

Following are the steps to download and install NESTINGWorks from the CAMWorks website:

1. Open the website www.camworks.com



2. Login using the **Username** and **Password**. In case you don't have them, then [register on the CAMWorks website](#) as explained in [Chapter 1](#) of this manual.
3. When you successfully login, click on the **Downloads Area** button.
The **Downloads Area** will be displayed.
4. Click on the link for **NESTINGWorks Downloads**.
5. Click on the appropriate hyperlink to download the *NESTINGWorks* installer.
6. After downloading the installer, run then installer in order to install the program. Follow the simple steps given in the Installation Program in order to complete the installation.

eDrawings

eDrawings® is a software application that renders accurate representations of 2D and 3D product designs. It offers unique capabilities like point and click animations that makes it easy to view, interpret and understand 2D and 3D design data.

Being an email-enabled visualization and communication tool, eDrawings significantly eases sharing of product design information and helps in more effective collaboration of everyone involved in product development.

Creating eDrawings files

eDrawings files provide representations of 3D models and 2D drawings created with many of the widely used CAD systems in the industry. These eDrawings files *ePRT*, *eASM*, *eDRW* are generated from CAD parts, assemblies or drawings using the eDrawings Publisher. eDrawings files are almost 95% smaller in size compared to the respective CAD models. These files can be opened and viewed using the eDrawings software application.

Sr. No.	SOLIDWORKS Document	Corresponding eDrawings File generated
1.	2D Drawing (*.slddrw)	*.eDRW
2.	3D Part model (*.sldprt)	*.ePRT
3.	3D Assembly (*.sldasm)	*.eASM



Versions of eDrawings application

- **eDrawings Viewer**

The *eDrawings Viewer* is a free version of the eDrawings application that allows you to view and print eDrawings files.

- **eDrawings Publisher**

eDrawings Publisher is a free version of the eDrawings application used to generate eDrawings files which anyone can view. Such eDrawings Publishers are available for all major CAD platforms including *SOLIDWORKS/ CAMWorks Solids*.

- **eDrawings Professional**

eDrawings Professional is a paid version of the eDrawings application used to generate eDrawings files which one can view, markup and measure using the application.

Licensing For eDrawings

A valid license is required to run eDrawings application. Your CAMWorks license must be programmed to run the **CW Utilities** module.

Installing eDrawing application

eDrawings is provided as an Optional Program in the CAMWorks DVD.

Following are the steps to download the eDrawings application:

1. Visit the website: www.edrawingsviewer.com
2. Download and install the **eDrawings Viewer**, **eDrawings Publisher** or **eDrawings Professional** as per your requirements.