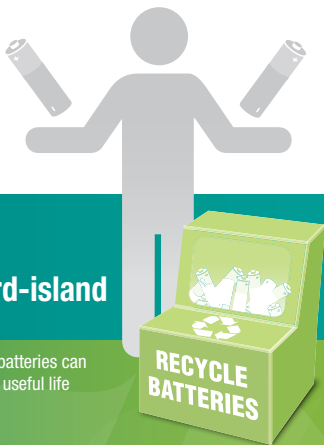




Giving old batteries a new life!

In Prince Edward Island, an Environmental Handling Fee (EHF) is applied to:

- ▶ Single-use household batteries
- ▶ Rechargeable batteries
- ▶ Batteries sold with or in:
 - Smoke & CO alarms
 - E-toys
 - Portable flashlights & spotlights
 - Garden/Renovation/Construction Tools



To learn more, visit
call2recycle.ca/prince-edward-island

EHF's are used to administer the program and ensure batteries can continue to be responsibly recycled at the end of their useful life and kept out of landfills.