

while  
it is  
*day*

we  
will  
*work*



The Salvation Army Celebrating  
**80** of Doing Good  
Years

THE SALVATION ARMY,  
AN INTERNATIONAL  
MOVEMENT, IS AN  
EVANGELICAL PART  
OF THE UNIVERSAL  
CHRISTIAN CHURCH.

Its message is based on the Bible.  
Its ministry is motivated by  
the love of God. Its mission is  
to preach the gospel of Jesus Christ  
and meet human needs in His name  
without discrimination.

I must do the  
work of the one  
who sent me  
while it is day.

John 9:4a (ISV)

Since our first operations in Singapore 80 years ago, The Salvation Army’s work has been a response  
to a greater call – a call to do the work of God. With faith at the heart of our mission, we have reached  
out to the fringes of society, supporting the less fortunate through our diverse social programmes and  
centres. Following the footsteps of those who have put aside their own gain to bring hope and restoration  
to the ones who need it most, we see the presence of need not as an obligation but an opportunity to share  
a message of love. And that is what our work is – to continue in this great ministry of compassion to feed  
the hungry, protect the helpless and comfort the hurting while it is *day*.

contents

- 01 This is Our Work
- 02 The Work is Good
- 04 The Work Lets Us Touch Lives
- 06 The Work Shapes a Generation
- 08 Celebrating 80 Years of Doing Good
- 14 Chairman & Territorial Commander’s Messages
- 16 Advisory Board
- 18 Key Highlights

- 30 Volunteerism
- 32 Corporate Information
- 36 Organisation Structure
- 37 Corporate Governance
- 39 Summary Financial Statements
- 45 Leaving a Legacy
- 46 Red Shield Club
- 47 Monthly Contribution Form
- 48 One-time Contribution Form

Our Centres

- 20 Peacehaven Bedok Multi-Service Centre
- 22 Peacehaven Nursing Home
- 23 The Haven
- 24 Gracehaven
- 26 Prison Support Services – Kids In Play
- 27 Family Support Services
- 28 Youth Development Centre
- 29 Corps Community Services







the  
**work** is good

## a window of grace

80 years ago, our pioneers opened their ears to the often unheard cries of the marginalised and estranged, sensing a desperate need to bring the light of God into a world darkened by pain and suffering.

The Salvation Army's efforts today are in recognition of that urgency to arise as helping hands and pillars of strength for the many individuals we work with.

— Every day, month and year has been a period of grace we hold sacred as we press on towards a brighter future for around 1600 of our beneficiaries.

— Grace we have freely received, and grace we freely give.

## a mission of hope

We are drawn to places of need, where there is much to be done for those who have fallen behind and onto hard times. Each of our social programmes and centres has been specially created to serve the different sectors of need in our community, from those who lack care and family support, to the frail and destitute. With the help of our officers, staff, donors and volunteers, we will provide needy individuals a safe place for restoration and hope for a full life – regardless of age, race or religion.

—  
Where  
there is  
hope,  
there is life  
renewed.

the  
**work**  
lets us  
touch lives





the **work**  
shapes  
a generation

a call  
to build

—  
The  
legacy  
we leave  
today  
builds our  
tomorrow.

The Salvation Army is a collective force for good that works towards empowering the underprivileged. As a non-profit organisation, we are supported by the strength, prayers and financial aid of many. Together, we can mend the cracks and nurture healthy communities where we are, and we invite all who are willing to join us in this mission. Where poverty and neglect continues to persist, there will always remain a call to carry on the good work of those who have gone before us out of their love for others.

The Salvation Army  
**Celebrating**





## 1935

The late Brigadier Herbert A Lord came alone to Singapore from the United Kingdom to explore the commencement of The Salvation Army's mission. The first Headquarters was located at 47 Killiney Road, which housed the activities for social work and evangelical outreach.



## 1936

The first Boys' Home for orphans and the poor was opened at Kim Keat Road. Later that year, a Girls' Home was established at Paterson Road.

## 1938

Government's ex-prisoners' assistance (Discharged Prisoners' Aid Society) operations was handed over to the Army. It was renamed The Singapore After-Care Association (SACA) to provide support for the inmates.

The Salvation Army set up its headquarters at the house of Tan Yeok Nee along Clemenceau Avenue.



## 1945

Immediately after the War, The Salvation Army was asked to undertake the work of rehabilitating many displaced children and young people in Singapore.



## 1956

Lee Kuo Chuan Nursery at Upper Bukit Timah opened after moving from Woodlands.



## 1972

Lee Kuo Chuan Nursery was converted to Lee Kuo Chuan Home for the Aged, which showed the Army's adaptability in meeting the growing demands to care for the elderly.

President Benjamin H Sheares officially opened a new Boys Home at Changi. This was later expanded to a Children's Home to help meet the community's needs.



## 1981

At a cost of \$2.2 million, The Haven opened at Pasir Panjang Road.



## 1985

Clementi Neighbourhood Centre, the first student day care centre for latch-key children in Singapore, was opened. Subsequent developments also saw the services extended to Kallang Bahru and Bukit Panjang Family Services Centres.



# The Salvation Army Celebrating

## 1986

Family Support Services provided practical support to needy families and elderly.

The Salvation Army Singapore, Malaysia and Myanmar Command Headquarters was relocated to a new building at 20 Bishan Street 22.



## 1990

Gracehaven, a \$6 million complex built by the government, was officially opened. Children from The Haven and the Boys' Home moved to Gracehaven.



## 1994

In response to the increased need for day care for the elderly, Bedok Multi-Service Centre for the Elderly was started.

The Salvation Army Singapore, Malaysia and Myanmar Command Headquarters was relocated to a new building at 20 Bishan Street 22.



## 1996

The first Red Shield Appeal Luncheon was held at Hyatt Regency Hotel and the guest of honour was Mr Abdullah Tarmugi, Minister for Ministry of Community Development, Youth and Sports.



## 2000

Play and Wait (PAW) programme for children of incarcerated parents was handed over to the Army by Save the Children Singapore.

Peacehaven Nursing Home was jointly opened by The Salvation Army General John Gowans and Mr Lim Hng Kiang, Minister for Health. Residents from the Home for the Aged moved to Peacehaven.

## 2001

The Haven reopened its doors for children.



## 2002

All The Salvation Army centres, in their first ever combined effort, held a Fun for Funds Carnival at Ngee Ann City Civic Plaza.



God Will Make A Way – Don Moen Concert in aid of Peacehaven Nursing Home saw 20,000 people at the Singapore Indoor Stadium from 27 – 29 September. A second Don Moen Charity Concert was held in 2004.

## 2003

Peacehaven Nursing Home was gazetted as an Approved Provider for Integrated Framework for Health Services for the Elderly.

Peacehaven Nursing Home was presented the Certificate of Commendation for Overcoming SARS by President S R Nathan.

Youth Development Centre with a purpose to reach out to underprivileged young people, took over Kallang Bahru Family Service Centre.



## 2004

A Family Fiesta Carnival was held at Ngee Ann City Civic Plaza to raise funds for the overall work of The Salvation Army. An estimated crowd of 10,000 people joined in the revelry.

## 2005

The Salvation Army Singapore, Malaysia and Myanmar Command was elevated to Singapore, Malaysia and Myanmar Territory.

To mark our 70th Anniversary, we held a Celebrities Banquet for 350 'celebrities' cum beneficiaries. An Intergenerational Amazing Day promoted intergenerational bonding and team building amongst various centres to raise funds.



## 2006

Peacehaven Nursing Home opened Hope Resident Living Area, the first dementia specific facility in Singapore funded by Lien Foundation.



## 2009

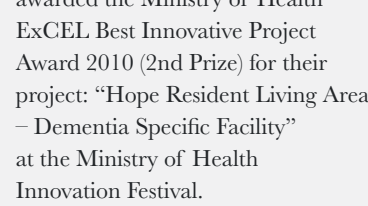
Prison Support Services - Kids In Play became the official name of our programme assisting children of incarcerated parents and their caregivers.



Bedok Multi-Service Centre's services under the Ministry of Community, Youth and Sports was converted to Dementia Day Care and Integrated Rehabilitation under the Ministry of Health.

## 2010

Peacehaven Nursing Home was awarded the Ministry of Health ExCEL Best Innovative Project Award 2010 (2nd Prize) for their project: "Hope Resident Living Area – Dementia Specific Facility" at the Ministry of Health Innovation Festival.



SPICE (Singapore Programme for Integrated Care for the Elderly) was launched at Bedok Multi-Service Centre, providing medical attention to elderly clients.



## 2011

President S R Nathan was the guest of honour for the Red Shield Appeal Luncheon.

The Salvation Army was granted bizSafe Level 2 status.

Eastern Health Alliance, the regional health system for eastern Singapore, was officially launched at Changi General Hospital. Peacehaven Nursing Home is one of the founding members of this alliance.



## 2012

An initiative by the Eastern Health Alliance, 32-bed Grace Corner at Peacehaven Nursing Home was officially launched by Minister for Health, Mr Gan Kim Yong. It was the first transitional convalescent facility in Singapore.

President Tony Tan Keng Yam was the guest of honour at the Red Shield Appeal Luncheon.



## 2013

Peacehaven Nursing Home was awarded bizSAFE Level 3 status by the Workplace Safety & Health Council.

Bedok Multi-Service Centre was renamed as Peacehaven Bedok Multi-Service Centre.



## 2014

Peacehaven Nursing Home's Hope Resident Living Area won the Ageing Asia Investment Forum's 2nd Asia Pacific Eldercare Innovation Awards for Best Dementia Care Programme.



## 2015

Peacehaven Nursing Home, Lien Foundation and Khoo Chwee Neo Foundation jointly unveiled plans for 'Jade Circle' a 60-bed extension for persons living with dementia. The innovative home will have technology and features to enhance privacy, independence and safety.

# Years of doing good



Years  
of *doing good*



## chairman's message

This is a special year for us as we are not only celebrating Singapore's Golden Jubilee but also The Salvation Army's 80th year in Singapore.

The Salvation Army in Singapore has indeed come a long way in identifying social gaps and meeting the needs of those who need relief from their difficult circumstances. For the past 80 years, we have forged ahead with determination to transform lives under our care and we have maintained that momentum and stayed adaptable to the changing social landscape, while improving our services accordingly.

In 2015, Gym Tonic was introduced to Peacehaven Nursing Home and 12 other eldercare facilities. Combining exercise with state-of-the-art technology, these specially designed exercise equipment caters to elderly who are frail and prone to falls. Using the equipment, strength training exercises are customised to individual needs, enabling them to remain active and delay their functional decline in normal ageing or in the event of acute incidents such as falls and stroke.

Constantly staying innovative to improve the lives of the elderly, Lien Foundation, Khoo Chwee Neo Foundation and Peacehaven Nursing Home jointly unveiled plans for an innovative nursing home for persons living with dementia. Set to open in 2017, Jade Circle will be an extension to Peacehaven Nursing Home at Changi. This new model aims to empower residents to make decisions, offer greater social interaction, and provide a homely environment for the elderly to lead meaningful lives.

Moving ahead, we will continue to explore new initiatives to bridge the gap for those who have fallen through the social cracks and we are working with the Ministry of Social and Family Development towards helping more children and families in need.

Thank you for sharing the same vision and passion in making a difference in the lives of the weak and vulnerable in our community. Your continued support is the reason we are still present even after 80 years. We hope to continue receiving your unstinting support to propel us towards the next 80 years.

Mr Bill Foo  
**Chairman**  
The Salvation Army Advisory Board, Singapore



## territorial commander's message

This year marks The Salvation Army's 80th anniversary. There is much to be grateful for as we look back and see how we have progressed since our first Salvation Army officer, the late Brigadier Herbert Lord, arrived on these shores in 1935.

I believe we have stayed true to our mission: our work stems from our love and faith in God, and we remain committed to serving human need without discrimination. That means everybody: the young, the elderly, the underprivileged and the unseen.

**Our belief in humanity, in human dignity, and our commitment to serve – have become deeply etched in everything we do in and for the community.**

It is the single driving force behind our successful social programmes, and the benefits that have resulted from them. It is this same sense of legacy and longevity that has been the hallmark of The Salvation Army's success in Singapore.

Colonel Lyndon Buckingham  
**Territorial Commander**  
The Salvation Army  
Singapore, Malaysia & Myanmar Territory

We are grateful for the many lives who have been touched and transformed in the past 8 decades through the ministry of The Salvation Army. The Salvation Army as an organisation has also transformed over the years to embrace innovation and knowledge in the way we deliver our services. Our experience and expertise gained over the years have created a momentum for us. We are more confident in making a difference in the lives of those we serve and will continue to improve ourselves so as to provide the most effective and professional way to care for the community.

We all know that no man is an island and our success has depended on the goodwill and generosity of all our partners. I would like to express my deepest appreciation to every donor, supporter and volunteer for demonstrating your belief in our cause.

The Salvation Army stands committed in meeting needs and ensuring that every donated dollar is stretched and prudently managed.

The work of The Salvation Army is extensive and expenses have been increasing in the recent years. We believe that with your continued support, we can look forward to embracing the future with confidence.

For every dollar spent from Social Fund in FY 2015, 94 cents was spent on our social programmes to help our beneficiaries.

The Salvation Army Advisory Board consists of business and community leaders who voluntarily provide their professional skills and knowledge of the community to:

- Assist The Salvation Army in interpreting community needs;
- Facilitate the development of resources to make a practical difference in the community, strengthening The Salvation Army's ability to serve;
- Increase public awareness of The Salvation Army's purpose and work, including the recruitment of volunteers and giving of hands-on assistance;
- Provide advice and guidance to The Salvation Army in areas such as budgeting, capital campaigns, public relations, fundraising, and building improvements and maintenance.

# advisory board

A commitment to excellence and serving others has united these like-minded professionals from diverse backgrounds to form an Advisory Board that is a vital partner in The Salvation Army ministry.

We are blessed to have Mr S Dhanabalan as our Patron and Mr Bill Foo as the Chairman of the Advisory Board. As at 31 March 2015, members of our Advisory Board include Mr Aje Saigal, Ms Angeline Tan, Ms Catherine Ong, Ms Cheng Pai Ling, Mr Eugene Lim, Lieut-Colonel Leopoldo Posadas, Mr Luke Lim, Colonel Lyndon Buckingham, Mr Richard Yong, Datuk Robert Chua, Mr Wen Khai Meng and Mr Winston Tan.



*Mr S Dhanabalan*



*From left:  
Mr Winston Tan, Mr Aje Saigal, Ms Catherine Ong, Datuk Robert Chua,  
Mr Eugene Lim, Mr Bill Foo, Mr Richard Yong*



*From left:  
Lieut-Colonel Leopoldo Posadas, Mr Luke Lim, Colonel Lyndon Buckingham,  
Ms Angeline Tan, Mr Wen Khai Meng, Ms Cheng Pai Ling*



# key highlights

## 01 The General's visit to Singapore



The Salvation Army Singapore, Malaysia and Myanmar Territory hosted the 2014 International Conference of Leaders in Singapore. This week long conference saw the arrival of General André Cox and Commissioner Silvia Cox, World President of Women's Ministries, as well as many other officers from various Salvation Army territories.

During the visit, General André Cox and Commissioner Silvia Cox had the privilege of meeting President Tony Tan Keng Yam on 21 July 2014 and also attended an invitation-only event at the British High Commission in Singapore in recognition of The Salvation Army's work in the region. The event was hosted by Acting High Commissioner, Judith Slater, and attendees included the Territorial Leaders of the Singapore, Malaysia and Myanmar Territory as well as members of the Singapore Advisory Board and representatives from the business sector.

## 02 Life Skills Programme

Held monthly for children in The Haven, Life Skills programme covers a variety of topics ranging from presentation skills, grooming tips, being confident individuals and good team players. Guest speakers are invited to impart these skills which will help the children to excel in school and in their future workplace.

## 03 Red Shield Appeal Luncheon



Held at Conrad Centennial on 15 August 2014, The Salvation Army's annual Red Shield Appeal Luncheon was opened by Colonel Lyndon Buckingham, Territorial Commander of The Salvation Army Singapore, Malaysia and Myanmar. The guest of honour, Health Minister Gan Kim Yong, highlighted the Ministry of Health's plans to ramp up aged care capacity and to enhance the quality and affordability of aged care. He also applauded Peacehaven for its commitment to innovate and improve care standards to provide better care for its residents.

Peacehaven's residents also performed a musical item to showcase their talents. Two of the residents even prepared a lovely canvas painting which was presented to the guest of honour towards the end of the event.

## 04 Building Singapore's Tallest Straw Lantern



Held on 6 September 2014, this Mid-Autumn Festival was a memorable one for Peacehaven Nursing Home as it marked the successful building of Singapore's Tallest Straw Lantern, which debuted in the Singapore Book of Records.

Guest of honour, Minister of State for Health, Dr Lam Pin Min unveiled the 5 metres tall lantern, made out of 10,240 colourful drinking straws and lit up by LED lighting. It was built by 75 residents with dementia and they were assisted by students and staff from the Institute of Technical Education College Central.

## 05 Charity Bike n Blade

Held from 11 – 14 September 2014, Charity Bike n Blade raised close to \$330,000 for Peacehaven Nursing Home and Peacehaven Bedok Multi-Service Centre, which was doubled when matched by the Community Silver Trust. The event also scaled new heights as cyclists had to challenge themselves when they cycled up Cameron Highlands over a distance of 60 km and another 160 km around Ipoh's tough terrain the next day.

## 06 Family Support Services collaborates with Drama Box



In collaboration with Family Support Services (FSS), Drama Box worked with a group of 19 senior citizens from FSS over several months, which gave them an opportunity to see Bukit Ho Swee through the eyes of the elderly.

Through workshop sessions, the elderly were taught basic photography and storytelling techniques and were tasked to capture images in the estate that were unique or meaningful to them. They also shared about their childhood and things that were special to them. This opportunity gave them a chance to reminisce about the past and share their experiences with the younger generation.

## 07 Christmas Kettling



With the generous support from our donors, volunteers and participating malls, our annual Christmas Kettling rang in a grand total of over \$287,300. Part of the proceeds were contributed through Starbucks Christmas Open House which raised over \$69,500 and Love For A Dollar gift wrapping services which raised around \$8,000.

## 08 Healing Paws



Healing Paws, by Save Our Street Dogs, aims to provide comfort and warmth to persons in need via Animal-Assisted-Activities. Through the programme, owners and their dogs volunteer their time in Gracehaven, providing companionship, motivation, and recreation.

## 09 Peacehaven Nursing Home 15<sup>th</sup> Anniversary

Peacehaven Nursing Home celebrated its 15<sup>th</sup> Anniversary on 28 February 2015 with Dr Amy Khor, Senior Minister of State, Ministry of Health as guest of honour. Amidst its host of activities, Peacehaven took the opportunity to thank its major donors.

## 10 Staff Appreciation Dinner



The Salvation Army officers and staff celebrated their Staff Appreciation Dinner at Safra Club on 6 March 2015. The theme for the night was 'Wow Wow West' and many enthusiastic staff came decked out in cowboy outfits, while others came dressed as Red Indians. Certificates were presented to dedicated employees celebrating 5, 10, 15 and 20 years of service. The night was filled with fun, food and laughter which ended with a cake cutting ceremony to celebrate our 80, 77 and 100 years in Singapore, Malaysia and Myanmar respectively.

## 11 Extra(Ordinary) Me



A workshop that gives the less privileged a voice through art, Extra(ordinary) Me encourages participants to reflect on their special qualities, hobbies and interest before translating them into a self-impression on paper. Youths from Gracehaven who attended the workshop enjoyed discovering and expressing themselves through drawing, painting and speech bubbles.

At the end of the workshop, the drawings were collected and exhibited along the Esplanade Tunnel titled 'I see You See Me'.



I like to come to this centre because the staff and people here are nice and there are friends I can talk to.

My doctor said I must exercise and I get to exercise here. The exercises help me to sleep well at night. I also enjoy the activities, especially the outings. The food here is nice too. This is like a second home to me.

*Yeo Suan Neo*  
Client

Peacehaven Bedok Multi-Service Centre is a day centre located in the eastern part of Singapore, offering therapeutic and maintenance rehabilitation programmes to elderly residents in the community. We aim to help them maintain mobility and lead fulfilling lives in the community.

Care is also provided to clients living with dementia, addressing their physical, cognitive and psycho-social needs. At the centre, clients have individual care plans designed to meet their specific needs

and are regularly reviewed by a multidisciplinary team consisting of a nurse, occupational therapist, physiotherapist and social worker. One of our successful programmes, Singapore Programme for Integrated Care for the Elderly (SPICE) offers nursing care, rehabilitation and medical services to help our clients maintain their quality of life in the community.

A partnership between Lien Foundation and a few other organisations from Singapore and

Finland, Gym Tonic is the latest project aiming to introduce the concept of exercise-as-medicine into eldercare facilities in Singapore. With specially designed gym equipment, our clients will build muscle strength using resistance training which helps them to stay as functional and independent as possible.

We also organise regular group and social activities such as Wii exercises, therapeutic games, and meal preparations for our clients to

participate in. Collaborations with schools, churches and organisations give the volunteers an opportunity to plan a day out with the elderly clients for some activities and social interaction.

Peacehaven Bedok Multi-Service Centre, under the management of Peacehaven, is a member of Eastern Health Alliance, the regional health system for the people of eastern Singapore.

peacehaven  
bedok multi-service centre





Peacehaven Nursing Home provides a safe haven for the sick, frail and elderly who have physical or mental disabilities with minimal or no appropriate caregiver support at home. The Home has a capacity of 401 beds and is divided into 13 Resident Living Areas (RLAs). Residents benefit from direct access to nursing care facilities, general practitioners' services, occupational therapy, physiotherapy, speech therapy and pastoral care.

Hope RLA is designed to resemble a home-like environment for residents with dementia who are able to walk independently. Moving in tandem with an ageing population, various programmes are available to meet the needs of residents.

One of our key programmes, Singapore Programme for Integrated Care for the Elderly (SPICE) enables adult clients to receive personalised medical care whilst living in their own homes. We also offer care services during weekends, subject to the client's needs.

I consider Peacehaven as my second family and home wherein love and support flourish. Peacehaven has also given me opportunities to upgrade myself professionally through continuing education and training.

*Wenifreda Macatangay*  
Senior Staff Nurse



## peacehaven nursing home

In collaboration with Changi General Hospital, Grace Corner provides focused and lower-intensity rehabilitation services to clients with short term disability conditions, to enable them to regain maximum mobility and return home to live independently.

Jade Circle is a new dementia care facility set to open by March 2017. In partnership with Lien Foundation and Khoo Chwee Neo Foundation, this facility is designed to help persons living with dementia to age in place and to maintain their autonomy and dignity. Designed like a cosy home, it boasts features to enhance privacy, independence and safety.

At Peacehaven, we continue to implement and maintain the Enhanced Nursing Home Standards set by the Ministry of Health and collaborate with stakeholders to develop healthcare innovation especially in the areas of dementia care.

We are also a founding member of Eastern Health Alliance, the regional health system for the people of eastern Singapore. We have been awarded the bizSAFE level 3 status which affirms our commitment to safety and health standards at our workplace.

## the haven

Like any home with children, The Haven is constantly filled with lively chatter and activities. Beneath the bustle of fussing over the children's needs, every staff shares a common aim to care for the children like their own and prepare them for the day when they will be reunited with their families and reintegrated into the community.

The Home provides a comprehensive programme for children and young people aged 6 to 19 who come from dysfunctional families. Most of them are referred by the Ministry of Social and Family Development, whilst others are referrals from external agencies and the Police.

Due to the abuse and abandonment by previous caregivers, the children come with hurts that run deep. Our Home is one of unconditional love and staff strive to journey with the children through their healing process.

The Haven also runs a Sibling Programme specially catered towards strengthening sibling bonds and building on the positive dynamics between siblings. Besides the Sibling Programme, we operate tuition programmes to help the children catch up academically and also provide avenues for the children to pursue sports, music and the arts. Essential life skills such as money management and team work are also weaved into our regular activities. In addition, a camp is held annually to help our young people develop positive values such as taking responsibility for oneself and others.

James was looked after by his mother's friends in Indonesia for several years and had just returned to Singapore. His parents had badly neglected him and chained him when they could not manage his high energy levels. They also did not send him to kindergarten though he was already six years old then. After intervention by a social worker, the parents admitted James in The Haven so that he could be better cared for. The Haven promptly enrolled James in a kindergarten. Though the parents were reminded, James missed the registration for Primary 1. An appeal was then made by the social worker to the Ministry of Education and hence he was given a place in school. With help from care staff, James gradually adjusted to living in The Haven as well as Singapore. He is now able to converse in English and Mandarin. From being a withdrawn child, James has blossomed and become a sociable and caring person. The social worker continues working with his parents who are involved in caring for him during weekends and school holidays.

*\* Name has been changed to protect the individual.*







# gracehaven

*I find it fulfilling to care for the children and I'm inspired to be a positive influence in their lives.*

*Shanta Devi*  
**Block Supervisor**

A designated home for children and young persons from the age of 6 to 21 years old, Gracehaven helps to transform the lives of those who are in need of care and protection or who are in conflict with the law.

For every young person who enters our home, our caseworkers will develop an individualised care plan to address the issues and behaviours of each youth. We utilise tools in

our case management to assess risks, needs and strengths of every young person in order to understand them and assist them to reduce challenging behaviour by promoting positive behaviour changes.

Our block management teams consisting of a block supervisor, assistant block supervisor, caseworker and care staff also work round the clock to take care of the children's

needs. Counselling for the parents is also provided for by Gracehaven or partnering agencies to lend practical support in parenting.

At Gracehaven, there is no lack of educational support and recreational opportunities for the children to develop their capabilities and interests whilst building up their self-esteem. We partner corporate volunteers and befrienders from the

community to enrich the children's lives, journeying with them back onto the right track.

A multidisciplinary approach is also adopted in engaging multiple partners such as schools, close kin, professionals and authorities to help the family towards reintegration and unification at the earliest possible time.





Prison Support Services – Kids In Play (KIP) takes on a vital role in reconnecting and maintaining family ties. Working closely with Singapore Prison Service and other relevant social services, KIP provides professional support for children of incarcerated parents and their caregivers through various programmes and services to facilitate reintegration.

Our structured programme helps children and teens deal with stigmatisation from having a parent in prison. The sessions help them develop positive self-identity and self-confidence through a variety of planned activities revolving around topics on respect, resilience and resourcefulness.

Teenagers who have benefitted from the programme have returned to volunteer as Children Helping Other Children (CHOC) Ambassadors to share their experiences, support younger children going through similar situations and help to facilitate children and teens sessions. Our CHOC Ambassadors were also part of a sponsored build trip out of Singapore in June 2014 for the less fortunate in Indonesia. They had a hand in painting walls, glossing wooden planks and in the foundational building processes. This experience made them step out of their comfort zone and they learnt to be more content with their situation back home.

For caregivers, our Woman Helping Other Women (WHOW) sessions focus on a variety of discussion topics about the issues they face, highlighting on positive parenting skills and self-care. This programme also acts as a support system for caregivers to remain emotionally strong and confident.

Aside from the children and their caregivers, social workers and caseworkers also work with inmates through regular sessions in prison, bringing awareness to them that their incarceration has immensely impacted their loved ones and that their family members are going through an arduous journey as well.

One of our successful programmes behind prison walls, Family Bonding Programme, allows children to interact with their incarcerated parent without having a physical barrier between them. It is a time where the children get to see and have physical contact with their parents. Fun elements are incorporated into the sessions to help families discuss certain issues and to bond through activities.

Moving ahead, KIP hopes to embark on a longitudinal study and meet the increasing needs of families in our society, as well as pilot programmes suited to the risk levels of children and families.

Family Support Services is like a second home to some of the elderly and underprivileged families staying in Bukit Merah. It is a familiar place where they know that they will not be left alone to face life's struggles.

Aimed at keeping the family unit intact, we offer a broad range of programmes, namely: casework management and counselling, food ration and financial assistance, health checks and support groups such as the Elderly Support Group, Mothers' Support Group and Youth Support Group.

Qualified social workers are assigned to follow up on referrals or walk-in cases and will extend casework and/or counselling services to those who need help to cope with their difficulties and emotional issues. Another mainstay is the food ration assistance where clients have the option of collecting it from the centre or at designated collection points each month. Door to door delivery is also available for home-bound clients. The Guardian Angel project taps on volunteers to help clients with painting, refurbishing and cleaning of their poorly maintained homes.

I am proud to be a Salvation Army soldier working in Family Support Services. As a social worker, I aim to be like a thermostat (rather than a thermometer) to make a difference and improve the lives of our clients.

Ivoine Tang  
Manager

# family support services



We also provide opportunities for clients to be involved in various arts and culture projects in the community which allows them to build up confidence in their own abilities.

To meet an increasing demand from the community for home help support to care for the elderly, plans are in the pipeline to expand our services.





# youth development centre

Youth Development Centre (YDC) believes in the potential of every youth and aims to empower them with life skills and knowledge while helping them to seek and unleash their potential. A comfortable respite for latch-key youths staying in the vicinity, YDC provides them with opportunities to experience and pursue various types of activities.

For youths interested in sports, YDC provides regular training for the tchoukball team and organises friendly matches with schools for them to hone their skills and build sportsmanship. Other sporting activities include kayaking, basketball, skating, cycling, pool and dodge ball. Besides sports, youths who enjoy music can learn to play the guitar, key board or drums in YDC's music studio.

YDC serves as a drop-in venue providing youths from disadvantaged backgrounds with a safe and conducive environment. We also facilitate study groups for the youths to support and help one another.

Recreational outings, monthly dinners and festive celebrations are organised for everyone to bond together. Collaborations with schools and external organisations also provide opportunities for our youths to grow from these interactive experiences.

With a holistic programme, YDC aims to have a well-established group of youth leaders, each belonging to one interest group for the purpose of development and social interaction, reaching out and supporting the younger ones.

A gullible and simple-minded 15 year old, Tom was a school drop-out who failed his PSLE 3 times and was asked to leave the school. His parents kept him at home fearing he would get into bad company. One day, Tom met YDC youths while loitering at the void deck. He was reluctant to join but watched them from a distance. For two years, staff and youth regularly spoke to him and supported him whenever he shared his problems and through the support, Tom realised YDC was a place of comfort and started to participate in the activities. He forged close friendships, gradually took on a positive attitude towards life and is now staying away from trouble and has also gained more self-confidence. He was also recently referred to another agency hoping to equip him with life skills which will be useful when he enters the workforce.

*\*Name has been changed to protect the individual.*



# corps community services

The Salvation Army Corps (community churches) reach out to the community through a variety of community services and activities, lending a helping hand to those in need through befriending, practical and spiritual support.

Not forgetting our pioneers, Bishan Chinese Corps organises a monthly elderly programme that reaches out to the elderly community, especially those living alone or from difficult backgrounds. Corps members

volunteer their time and bring joy to the elderly through songs, games and exercises while volunteer hairdressers provide free haircuts. This group of elderly people, mostly in their 80's, are also presented with food and supermarket vouchers to help them tide over the rest of the month.



# volunteerism

The Salvation Army has engaged more than 1600 individual volunteers and partnered 125 corporate volunteers in the last year.

Volunteers with skills to contribute or are just passionate to make a difference, are welcome to work alongside us in serving and enriching lives without discrimination.

Through the years, we have forged meaningful partnerships with both corporate and individual volunteers who have befriended and brought much joy and happiness to the young and old under our care.

Volunteers delight beneficiaries by organising outings and celebrations, providing tuition; sharing skills in the area of sports, art, music; baking and handicraft; as well as improving facilities with paint touch-ups and gardening.

Volunteers may also choose indirect volunteering opportunities such as processing of donation in-kind items and assisting at fundraising events. Two notable fundraising events are Starbucks Christmas Open House and Charity Bike n Blade where cyclists pushed themselves through challenging routes in Malaysia to raise funds for a good cause.

The Salvation Army endeavours to match each volunteer's skills, interest, commitment level, experience and references to meet real needs through our network of social service centres and programmes. For more information, please visit the SA-V portal at [sg.salvationarmy.org/volunteer](http://sg.salvationarmy.org/volunteer).

What drew me to ride for Charity Bike n Blade was because of its support for The Salvation Army. In the last couple of years, I have had the privilege of working with the good people at The Salvation Army and I have been impressed and humbled by the extensive labour of love that goes on for the betterment of people's lives.

Kevin Thio  
Charity Bike n Blade Cyclist





# corporate information



The Salvation Army was established under the Statutes of Singapore, Ordinance 23 of 1939 as Salvation Army Ordinance (Chapter 377).

*IPC Registration Number*  
000549

*Unit Entity Number*  
T07CC3012G

*Registered Address*  
20 Bishan Street 22  
Singapore 579768

*Lawyers*  
Donaldson & Burkinshaw

*Bankers*  
DBS Bank Ltd  
Standard Chartered Bank  
United Overseas Bank Ltd

*Auditors*  
Ardent Associates LLP

*Investment Advisors*  
Nikko Asset Management Asia Ltd  
Lion Global Investors Ltd

## Finance Council

The Finance Council is the territory’s primary decision-making body for the control and management of territorial financial and property resources. It is responsible for the economical, efficient and successful conduct of all the business under its supervision.

### Finance Council Members

<i>Name</i>	<i>Designation</i>	<i>Date of Appointment</i>
Colonel Lyndon Buckingham	Territorial Commander	1 Jan 2015
Colonel Bronwyn Buckingham	Territorial President of Women’s Ministries	1 Jan 2015
Lieut-Colonel Leopoldo Posadas	Chief Secretary	1 Jan 2015
Lieut-Colonel Evelyn Posadas	Territorial Secretary for Women’s Ministries	1 Jan 2015
Major Hary Haran	Programme Secretary	1 Jan 2015
Major Irene Chang	Territorial Candidates Secretary and Assistant Officer Personnel	1 Jan 2015
Major Francis Ng	Liaison Officer (East Malaysia), Team Leader and Commanding Officer	1 Jan 2015
Major Lim Chee Kwee	Literary Secretary	1 Jan 2015
Captain Lalrindiki	Territorial Youth Secretary	1 Jan 2015
Mdm Koh Guek Eng	Director, Finance	1 Jan 2015
Mr John Ng	Director, Property	1 Jan 2015

## Central Council

A Central Council is established at Territorial Headquarters to assist the Territorial Commander in policy matters relating to the operations of The Salvation Army in the territory, other than those which are the responsibility of the Territorial Finance Council.

### Central Council Members

<i>Name</i>	<i>Designation</i>	<i>Date of Appointment</i>
Colonel Lyndon Buckingham	Territorial Commander	1 Jan 2015
Colonel Bronwyn Buckingham	Territorial President of Women’s Ministries	1 Jan 2015
Lieut-Colonel Leopoldo Posadas	Chief Secretary	1 Jan 2015
Lieut-Colonel Evelyn Posadas	Territorial Secretary for Women’s Ministries	1 Jan 2015
Major Hary Haran	Programme Secretary	1 Jan 2015
Major Lee Kong Yee	Senior Training and Education Officer	1 Jan 2015
Major Lim Chee Kwee	Literary Secretary	1 Jan 2015
Mdm Koh Guek Eng	Director, Finance	1 Jan 2015



# corporate information

## Social Fund Expenditure Board

The Social Fund Expenditure Board is concerned with the economical and efficient conduct of all business pertaining to the Social Fund. The Board monitors that all expenditures are within the approved budget and can give approval for expenditure not in the budget after due care and consideration. The Board also establishes policies and safeguards for the smooth running of all social programmes. The Social Fund Expenditure Board will seek the approval of the Finance Council for expenditures beyond the Board’s limit.

## Social Fund Expenditure Board Members

<i>Name</i>	<i>Designation</i>	<i>Date of Appointment</i>
Colonel Lyndon Buckingham	Territorial Commander	1 Jan 2015
Lieut-Colonel Leopoldo Posadas	Chief Secretary	1 Jan 2015
Major Hary Haran	Programme Secretary	1 Jan 2015
Major Lim Chee Kwee	Literary Secretary	1 Jan 2015
Major Francis Ng	Liaison Officer (East Malaysia), Team Leader and Commanding Officer	1 Jan 2015
Major Irene Chang	Territorial Candidates Secretary and Assistant Officer Personnel	1 Jan 2015
Mdm Koh Guek Eng	Director, Finance	1 Jan 2015
Ms Angeline Tan	Director, Public Relations	1 Jan 2015
Mr John Ng	Director, Property	1 Jan 2015
Ms Linda Auyong	Director, Social and Community Services (Singapore)	1 Jan 2015
Mr Peter Khoo	Superintendent	1 Jan 2015

## Internal Audit Board

The Board serves to evaluate, assess and monitor governance, risk and compliance factors and can challenge any current practice, champion best practices and be a catalyst for improvement with the objective of ensuring that the organization as a whole can achieve its strategic objectives. To this end, the Board is prepared to make any necessary recommendations for developmental effectiveness.

## Internal Audit Board Members

<i>Name</i>	<i>Designation</i>	<i>Date of Appointment</i>
Lieut-Colonel Leopoldo Posadas	Chief Secretary	1 Jan 2015
Major Hary Haran	Programme Secretary	1 Jan 2015
Major Lee Kong Yee	Senior Training and Education Officer	1 Jan 2015
Major Francis Ng	Liaison Officer (East Malaysia), Team Leader and Commanding Officer	1 Jan 2015
Mdm Koh Guek Eng	Director, Finance	1 Jan 2015
Mr Paul Boon	Internal Auditor	1 Jan 2015

## Human Resources Board

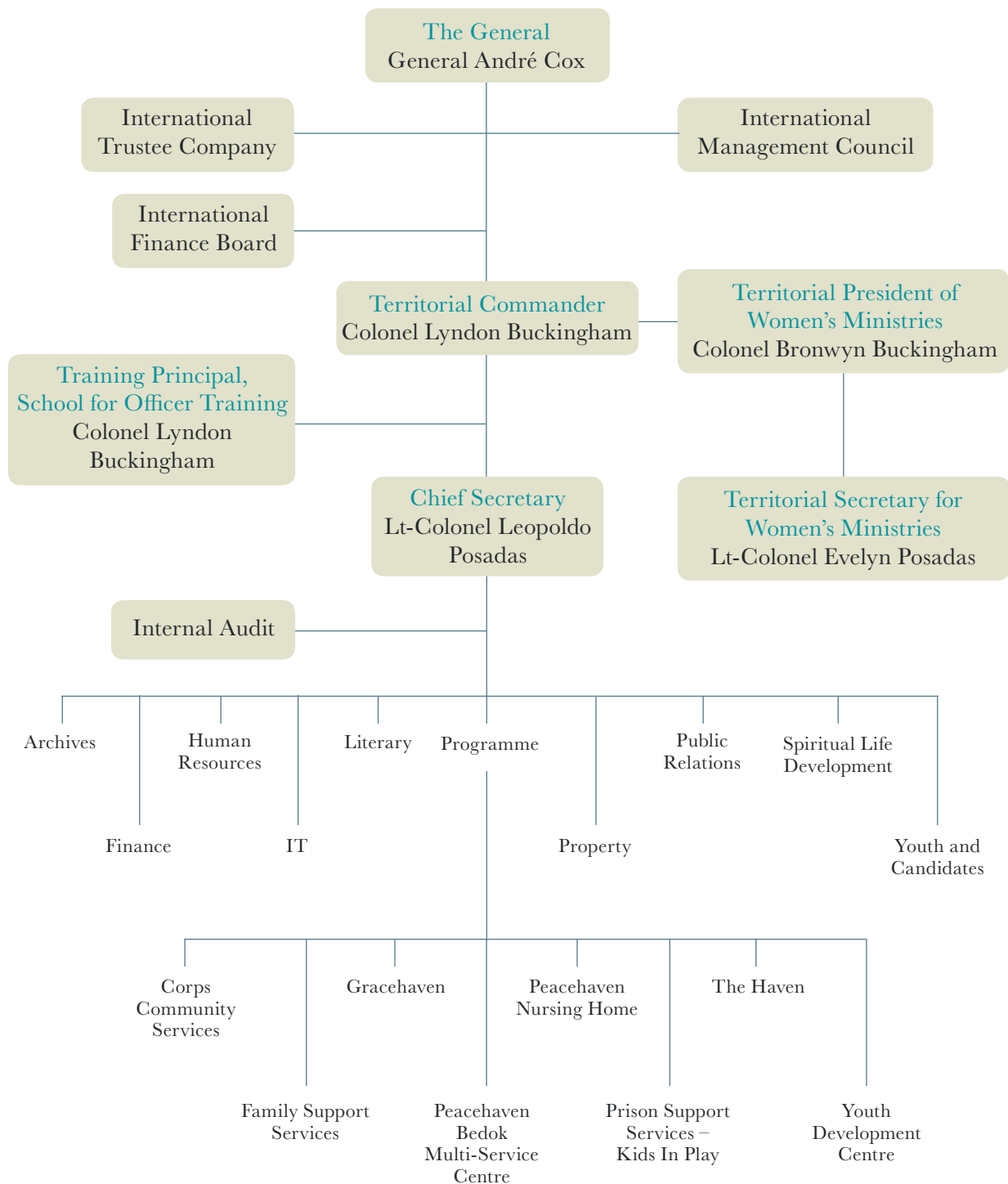
The Board reviews human resource policies and procedures and ensures that they are effectively implemented. It considers strategic matters related to salaries and allowances, and evaluates annual wage adjustments and variable bonus factors. It also assesses and approves applications for hiring and promotion (senior positions) and reviews training, grievances, discipline, redundancies, resignations and dismissals. Recommendations made by the Board will be submitted to the Finance Council for approval.

## Human Resources Board Members

<i>Name</i>	<i>Designation</i>	<i>Date of Appointment</i>
Colonel Lyndon Buckingham	Territorial Commander	1 Jan 2015
Lieut-Colonel Leopoldo Posadas	Chief Secretary	1 Jan 2015
Major Hary Haran	Programme Secretary	1 Jan 2015
Major Francis Ng	Liaison Officer (East Malaysia), Team Leader and Commanding Officer	1 Jan 2015
Major Irene Chang	Territorial Candidates Secretary and Assistant Officer Personnel	1 Jan 2015
Mrs Toh-Chia Lai Ying	Director, Human Resources	1 Jan 2015
Mdm Koh Guek Eng	Director, Finance	1 Jan 2015
Major Lim Chee Kwee	Literary Secretary	1 Jan 2015
Mr Peter Leow	Senior Manager, Human Resources	1 Jan 2015



# organisation structure



Information as at 31 March 2015

# corporate governance

The Salvation Army works continually at putting good organisational policies and processes in place, towards good governance standards and in compliance with the code of governance for Charities and Institutions of Public Character.

## Donor Confidentiality Policy

The Salvation Army respects donors' confidentiality. All information and records will be kept confidential. The donor's name or other details will not be published in any corporate collateral unless permission has been obtained from the donor. The Salvation Army also respects the donor's decision to be excluded from the donor list or to restrict the frequency of solicitations through the use of mailings, email, telephone or other approaches.

## Conflict of Interest Policy

The Salvation Army's Conflict of Interest Policy aims to protect the organisation's welfare and best interests over and above all priorities and objectives. The policy mandates that no key personnel of The Salvation Army shall be involved in activities that violate the principles of the organisation and derive any personal profit or gain, directly or indirectly, by reason of his or her work with The Salvation Army. Each key personnel shall disclose to any board any personal interest which he or she may have in any matter pending before the organisation and shall refrain participation in any decision on such matter, upon his/her taking up of the employment/appointment in the organisation. Annual declaration of interests by key personnel is required. He/She shall fully disclose to any board in the event a conflict of interest situation may arise.

## Reserve Policy

The policy defines reserve as that part of the income funds that is freely available for its operating purposes not subject to commitments, planned expenditure and spending limits. It does not include endowment funds, restricted funds and designated funds. In the audited financial statements, this reserve is termed "unrestricted reserve". The reserve provides financial stability and the means for the development of our principal activity. The level of the reserve is being reviewed annually.

## Position on Gambling

The Salvation Army believes that gambling has serious and adverse effects upon vulnerable individuals and their families and upon the very fabric of society. Compulsive and addictive gambling is a serious social problem and creates many casualties in society, as it promotes and condones false values and is therefore detrimental to the spiritual and moral well-being of those who participate in gambling. The Salvation Army worldwide cares and rehabilitates such vulnerable casualties of gambling. Therefore, The Salvation Army in the Singapore, Malaysia and Myanmar Territory will refrain from receiving or applying for funding from any lottery or gambling source.



# corporate governance

## Fraud Control Strategy

Fraud is a criminal act that will not be tolerated by The Salvation Army. Fraud (includes finances, material and property) perpetrated by anyone in the organisation will be referred for investigation and the matter be reported to the Finance Council. Any allegation of fraud will be treated with confidentiality.

This policy statement outlines detailed steps on the identification of suspected or actual fraud. It includes investigation, recommendations of actions to be taken such as reporting to the Police and informing The Salvation Army International Headquarters, disciplinary action and recovery of debt. Appropriate counselling will be made available to all affected parties. Prevention is imperative and all heads, managers and supervisors must meet their responsibilities in preventing fraud and, wherever possible, adopt the necessary procedures and policies to minimise the risk of it happening.

## Whistle Blowing Policy

The Salvation Army is committed to maintaining a high standard of moral and ethical conduct; and complies with accounting, financial reporting, internal controls, corporate governance, auditing requirements and any relevant legislation. In line with this commitment and our belief in open communication and transparency, the Whistle Blowing Policy aims to provide an avenue for employees, volunteers and external parties to raise concerns, and offer reassurance that they will be protected from reprisals or victimization for whistle blowing in good faith.

## Human Resources Management

The Salvation Army management accepts the responsibility for good employee relations within relevant legislation and labour framework. The Human Resources Department is responsible for administering the personnel policies and procedures concerning employment matters. All employees are given an Employee Manual. Guidelines are also established for effective management of our volunteer resources.

A risk register is maintained to monitor areas of staffing, competency deficiency and workplace safety and health. We recognize that attracting, retaining and motivating people requires innovative integration and enhancement of our reward, performance, learning and development management practices.

# summary financial statements

For the year ended 31 March 2015



statement by the  
*finance council*

THE ACCOUNTS FOR THE YEAR WERE AUDITED BY ARDENT ASSOCIATES LLP PUBLIC ACCOUNTANTS AND CERTIFIED PUBLIC ACCOUNTANTS.

The Summary Financial Statements as set out on pages 41 to 44 contain only a summary of the information in the full financial statements.  
The Summary Financial Statements do not contain sufficient information to allow for a full understanding of the results and the state of affairs of the Organisation.

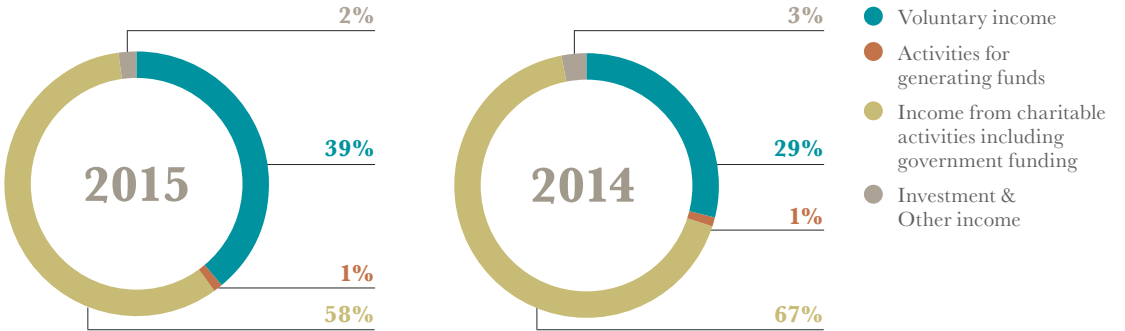
For further information, the full financial statements and the Auditors' Report on those statements should be consulted.

The full financial report can be viewed at the Organisation's website: [sg.salvationarmy.org](http://sg.salvationarmy.org)

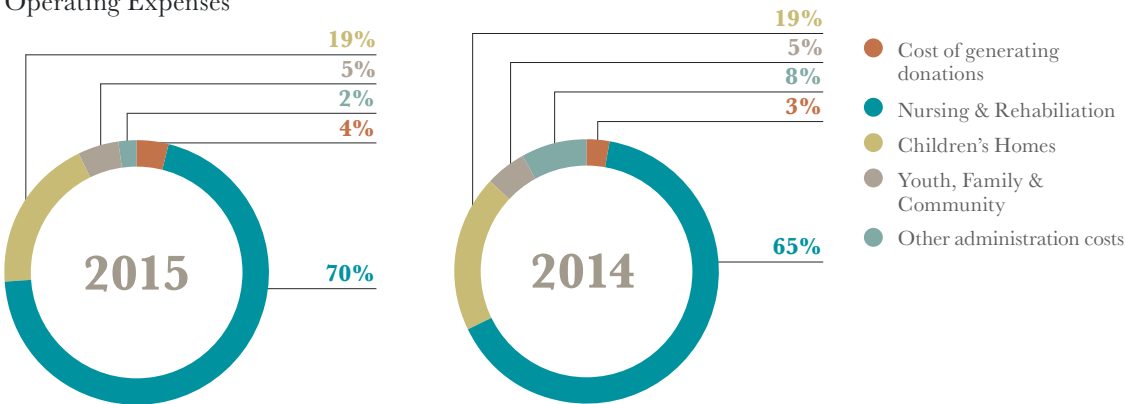
summary statement of  
*financial performance*

For the year ended 31 March 2015

Operating Income



Operating Expenses



	2015 (\$'000)	2014 (\$'000)	APPROPRIATIONS FROM/(TO) FUNDS	2015 (\$'000)	2014 (\$'000)
Income	28,891	21,872	TO FINANCE CURRENT COSTS FROM		
Expenditures	23,366	21,940	Unrestricted funds	22,876	20,959
Surplus	5,525	(68)	Capital contribution funds	292	273
			Designated (operational) funds	198	648
			Restricted funds	—	60
			TRANSFERS BETWEEN FUNDS		
			Unrestricted funds	128	74
			Capital contribution funds	(394)	—
			Designated (operational) funds	85	(74)
			Restricted funds	181	—
APPROPRIATIONS FROM/(TO) FUNDS OF CURRENT YEARS INCOME TO	2015 (\$'000)	2014 (\$'000)			
Unrestricted funds	(28,611)	(21,692)			
Designated (operational) funds	(280)	(180)			



# summary

statements

## of Changes in Funds and Reserves for the year ended 31 March 2015

	Total Funds
As at 1 April 2013 (\$'000)	16,351
Total surplus for the year	(68)
Transfer from/(to) General & Property Fund	(3,000)
As at 31 March 2014 (\$'000)	13,283
As at 1 April 2014 (\$'000)	13,283
Total surplus for the year	5,525
Transfer from/(to) General & Property Fund	(4,282)
<b>As at 31 March 2015 (\$'000)</b>	<b>14,526</b>

## of Financial Position as at 31 March 2015

FUNDS AND RESERVE	2015 (\$'000)	2014 (\$'000)
Capital contribution funds	952	849
Restricted funds	1	182
Designated (operational) funds	2,606	2,609
Unrestricted funds	10,967	9,643
<b>Total Funds and Reserves</b>	<b>14,526</b>	<b>13,283</b>
Non current assets	952	4,676
Current assets	15,374	9,950
<b>Total Assets</b>	<b>16,326</b>	<b>14,626</b>
Current liabilities	1,800	1,343
<b>Total Liabilities</b>	<b>1,800</b>	<b>1,343</b>
<b>Net Assets</b>	<b>14,526</b>	<b>13,283</b>

# notes to the summary

# financial statements

## General Information

The Salvation Army (the “Organisation”) was constituted as a corporation in Singapore under the Statutes of the Republic of Singapore, Salvation Army Ordinance (Chapter 377). The Organisation is registered as an exempt charity under the Charities Act (Chapter 37) and domiciled in Singapore. The registered address of the Organisation is at 20 Bishan Street 22, Singapore 579768.

The Salvation Army, Social Fund (the “Fund”) is conferred with Institute of Public Character status (IPC No.: IPC000549). Accordingly, qualifying donors are granted tax deduction for donations made by them to the Fund.

The Fund provides:

- nursing home;
- residential homes for the children and young people at risk;
- ministries to troubled young people;
- day care centre for the elderly;
- food for families;
- counselling services; and
- prison support service

There have been no significant changes in the nature of the activities during the year.

The financial statements of the Fund for the current financial year were approved and authorised for issue by the Finance Council on the date of the Statement by the Finance Council.

## Basis of Preparation

The financial statements of the Fund have been prepared in accordance with Singapore Charities Accounting Standards (“CAS”). The financial statements have been prepared on the historical cost basis. The financial statements are presented in Singapore dollars (“S\$”), which is the Fund’s functional currency.

## Funds

- **Unrestricted funds**  
This is the working capital of the Fund.
- **Fair value reserve**  
Fair value reserve represents the cumulative fair value changes of available-for-sale financial assets until they are disposed or impaired.
- **Capital contribution funds**  
These represent funds set up by the Fund to meet the costs of plant and equipment.
- **Designated (operational) funds**  
These are funds specifically set aside by the Fund to meet operational planned or anticipated needs.
- **Restricted funds**  
These are donations or legacies held for restricted purposes as specified by the donors.

## Taxation

The Fund is registered as an exempt charity under the Charities Act (Chapter 37). By virtue of Section 13(1)(zm) of the Income Tax Act (Chapter 134) the Fund income is exempted from income tax.



Commitments

– Capital commitments

Capital expenditure contracted for as at the financial year end date but not recognised in the financial statements are as follows:

	2015 (\$'000)	2014 (\$'000)
Capital commitments in respect of plant and equipment	–	220
Commitment to purchase medical beds and other programme equipments	–	–

– Operating lease commitments – as lessee

Future minimum rental payable under non-cancellable operating leases in respect of rental of equipment at the financial year end are as follows:

	2015 (\$'000)	2014 (\$'000)
Not later than five years	24	43

Lease terms do not contain restrictions on the Fund’s activities concerning dividends, additional debt or further leasing.

Related Party Transactions

– Transactions with related parties

Significant transactions between the Fund and related parties took place at terms agreed between the parties during the financial year:

	2015 (\$'000)	2014 (\$'000)
Transactions with General Fund Singapore	1,579	4,390
Transactions with Property Fund Singapore	1,389	1,407

– Compensation for key management personnel

	2015 (\$'000)	2014 (\$'000)
Salaries and other short term benefits	165	143

Key management personnel comprises members of the Finance Council and two other personnel who are not members of the Finance Council. Except for the above, there is no claim by the key management personnel for services provided to the Fund, either by reimbursement or by providing allowances or by direct payment to a third party. The compensation of key management personnel disclosed in the table above is for one person.

THE SALVATION  
ARMY IS MOST  
GRATEFUL TO  
DONORS LIKE  
YOURSELF WHO GIVE  
GENEROUSLY TO  
SUPPORT OUR WORK  
OVER THE YEARS.  
IT WOULD MEAN  
A LOT TO THOSE  
IN NEED IF SUCH  
GIVING COULD BE  
EXTENDED TO THE  
FUTURE THROUGH  
YOUR ESTATE.

leaving  
a  
Legacy

There will always be people in need of assistance beyond your lifetime. By choosing to make a lasting contribution to The Salvation Army, your generosity and kindness will help sustain our mission, that began in England in 1865, to give the most comprehensive care possible to people in need.

You may choose from varied giving options through your Will, insurance policies, annuities and Central Provident Fund. Your gift, no matter how big or small, will help to transform lives.

For more information, visit  
sg.salvationarmy.org





# one time contribution form

Yes, I will help by giving a one time contribution

☐ \$500    ☐ \$200    ☐ \$100    ☐ \$ \_\_\_\_\_

Personal Particulars

Name: Dr/ Mr/ Ms/ Mdm/ Mrs \_\_\_\_\_

Address: \_\_\_\_\_

\_\_\_\_\_ Postal Code ( \_\_\_\_\_ )

Tel: \_\_\_\_\_ Mobile: \_\_\_\_\_

Email: \_\_\_\_\_

☐ Personal donation

NRIC/ FIN: \_\_\_\_\_

☐ Corporate donation

Company Name: \_\_\_\_\_

UEN: \_\_\_\_\_

This donation is tax deductible and the deduction will be automatically included in your tax assessment if you have provided your tax reference number (eg. NRIC/ FIN/ UEN). IRAS no longer accepts claims for tax deduction based on donation receipts.

Donation Details

☐ I enclose my cheque made payable to **The Salvation Army**

Cheque No: \_\_\_\_\_

Bank: \_\_\_\_\_

☐ Please charge my donation to:

☐ MasterCard    ☐ VISA    ☐ Diners    ☐ Amex

Card No. 

					-						-					-			
--	--	--	--	--	---	--	--	--	--	--	---	--	--	--	--	---	--	--	--

Card Expiry 

--	--

 / 

--	--

  
month      year

Name as on card \_\_\_\_\_ Signature \_\_\_\_\_

☐ I would like an SMS acknowledgement upon the successful clearance of my donation. My mobile no. is provided above. By opting for this service, I will not receive the tax deductible receipt.

OR

☐ Yes, I want a tax deductible receipt (only applicable to donors who have provided their NRIC/ FIN/ UEN). Receipt will only be issued for a donation of \$50 and above.

☐ Current donor      ☐ New donor

☐ I would like to know how to include The Salvation Army in my Will.

The Salvation Army respects donors’ confidentiality. By submitting our donation forms, you consent to the use of your personal data for processing donations, donor relationship management, fund raising and communications. To opt out of receiving communications materials for our donors, kindly contact us at 6555 0246.

Thank you for your donation.

Please mail your donation with this slip to:  
**The Salvation Army, Ang Mo Kio Central PO Box 640 Singapore 915605**

# contact us

TERRITORIAL HEADQUARTERS

20 Bishan Street 22 Singapore 579768  
Tel: 6555 0188

CHILD CARE CENTRES

Blk 610 Ang Mo Kio Ave 4 #01-1227 Singapore 560610  
Tel: 6452 4862

Blk 247 Bukit Batok East Ave 5 #01-86 Singapore 650247  
Tel: 6562 4976

Blk 402 Fajar Road #01-217 Singapore 670402  
Tel: 6760 2624

Blk 159 Tampines St 12 #01-95 Singapore 521159  
Tel: 6785 2976

CORPS & COMMUNITY CENTRES

Balestier Corps

126 Balestier Road Singapore 329681  
Tel: 6513 2460

Bishan Chinese Corps

20 Bishan Street 22 Singapore 579768  
Tel: 6643 8874

Changi Corps

7 Upper Changi Road North Singapore 507705  
Tel: 6546 5828

Kallang Bahru Outpost

Blk 66 Kallang Bahru #01-507 Singapore 330066  
Tel: 6291 2142

Singapore Central Corps

20 Bishan Street 22 Singapore 579768  
Tel: 6555 0252

Singapore Eratchippu Corps

500 Upper Bukit Timah Singapore 678106  
Tel: 6349 5346

William Booth Corps

500 Upper Bukit Timah Road Singapore 678106  
Tel: 6349 5327

William Booth Corps @ Bukit Panjang

Blk 404 Fajar Road #01-267 Singapore 670404  
Tel: 6763 0837

FAMILY SUPPORT SERVICES

Blk 42 Beo Crescent #01-95 Singapore 160042  
Tel: 6273 7207

GRACEHAVEN

3 Lorong Napiri Singapore 547528  
Tel: 6580 2250

PEACEHAVEN BEDOK MULTI-SERVICE CENTRE

Blk 121 Bedok North Road #01-161/163 Singapore 460121  
Tel: 6445 1630

PEACEHAVEN NURSING HOME

9 Upper Changi Road North Singapore 507706  
Tel: 6546 5678

PRAISEHAVEN RETREAT CENTRE

500 Upper Bukit Timah Road Singapore 678106  
Tel: 6349 5302

PRISON SUPPORT SERVICES – KIDS IN PLAY

7 Upper Changi Road North Singapore 507705  
Tel: 6546 5867

RED SHIELD INDUSTRIES

Hotline for Pick-Up of Bulky Items

Tel: 6288 5438

Bukit Merah Family Store

Blk 133 Jalan Bukit Merah #01-1530 Singapore 160133  
Tel: 6275 5877

Hope Centre Family Store

7 Upper Changi Road North Singapore 507705  
Tel: 6546 0309

IMH Pick n Choose Store

10 Buangkok View Singapore 539747  
Tel: 6385 3874

Praisehaven Mega Family Store

500 Upper Bukit Timah Road Singapore 678106  
Tel: 6349 5312

Tanglin Mega Family Store

356 Tanglin Road Singapore 247674  
Tel: 67182513

SCHOOL FOR OFFICER TRAINING

500 Upper Bukit Timah Road Singapore 678106  
Tel: 6349 5332

THE HAVEN

350 Pasir Panjang Road Singapore 118692  
Tel: 6775 0366

YOUTH DEVELOPMENT CENTRE

Blk 65 Kallang Bahru #01-305 Singapore 330065  
Tel: 6291 6303

Donate cash online:

sg.salvationarmy.org

Donate in-kind:

www.redshieldindustries.com

Be our volunteer:

Tel: 6555 0232

For other enquiries: public\_relations@smm.salvationarmy.org





The Salvation Army Singapore  
Ang Mo Kio Central P.O. Box 640 S915605  
**[sg.salvationarmy.org](http://sg.salvationarmy.org)**