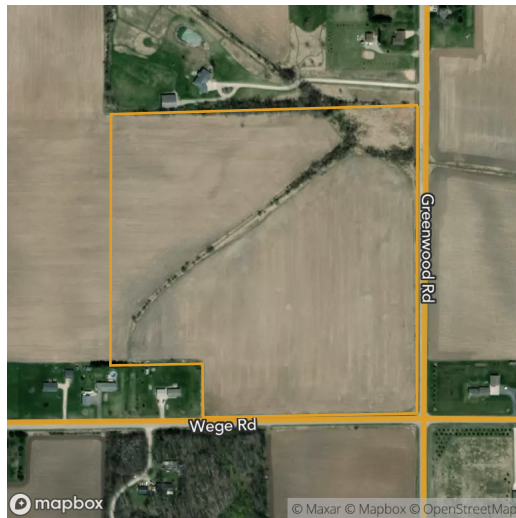


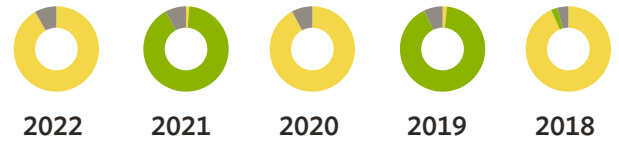
3 fields, 89 acres in Outagamie County, WI

TOWNSHIP/SECTION 22N 16E - 23

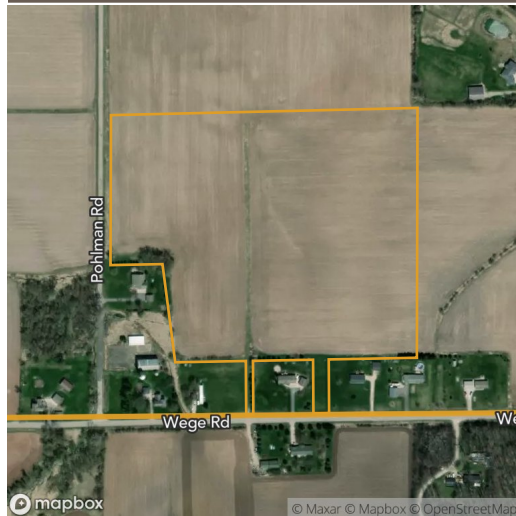


Field 1

36 ac.

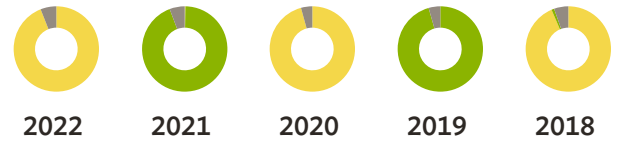


Corn	91.7%	1.2%	92.1%	1.7%	93.4%
Soybeans	-	90.8%	-	91.2%	2.4%
Other	8.3%	7.9%	7.9%	7.2%	4.2%

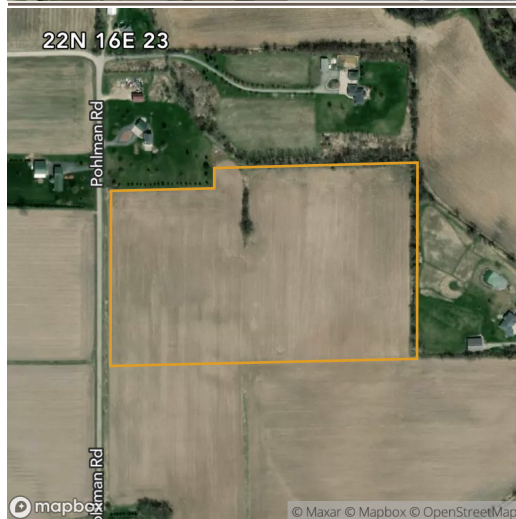


Field 2

29 ac.

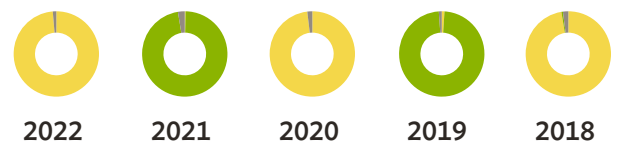


Corn	94.0%	0.3%	95.7%	-	93.6%
Soybeans	-	94.0%	-	95.6%	1.0%
Other	6.0%	5.7%	4.3%	4.4%	5.4%



Field 3

23 ac.



Corn	98.7%	0.3%	98.1%	1.0%	97.4%
Soybeans	-	97.1%	-	97.9%	0.6%
Other	1.3%	2.6%	1.9%	1.1%	2.0%

3 fields, 89 acres in Outagamie County, WI

TOWNSHIP/SECTION 22N 16E – 23



All fields

89 ac.



	2022	2021	2020	2019	2018
Corn	94.3%	0.7%	94.9%	1.0%	94.5%
Soybeans	–	93.5%	–	94.4%	1.5%
Other	5.7%	5.8%	5.1%	4.7%	4.0%

Source: NASS Cropland Data Layer