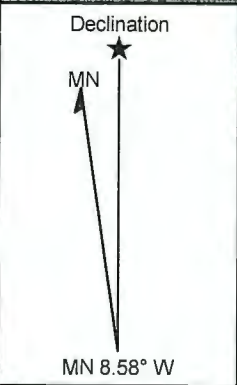
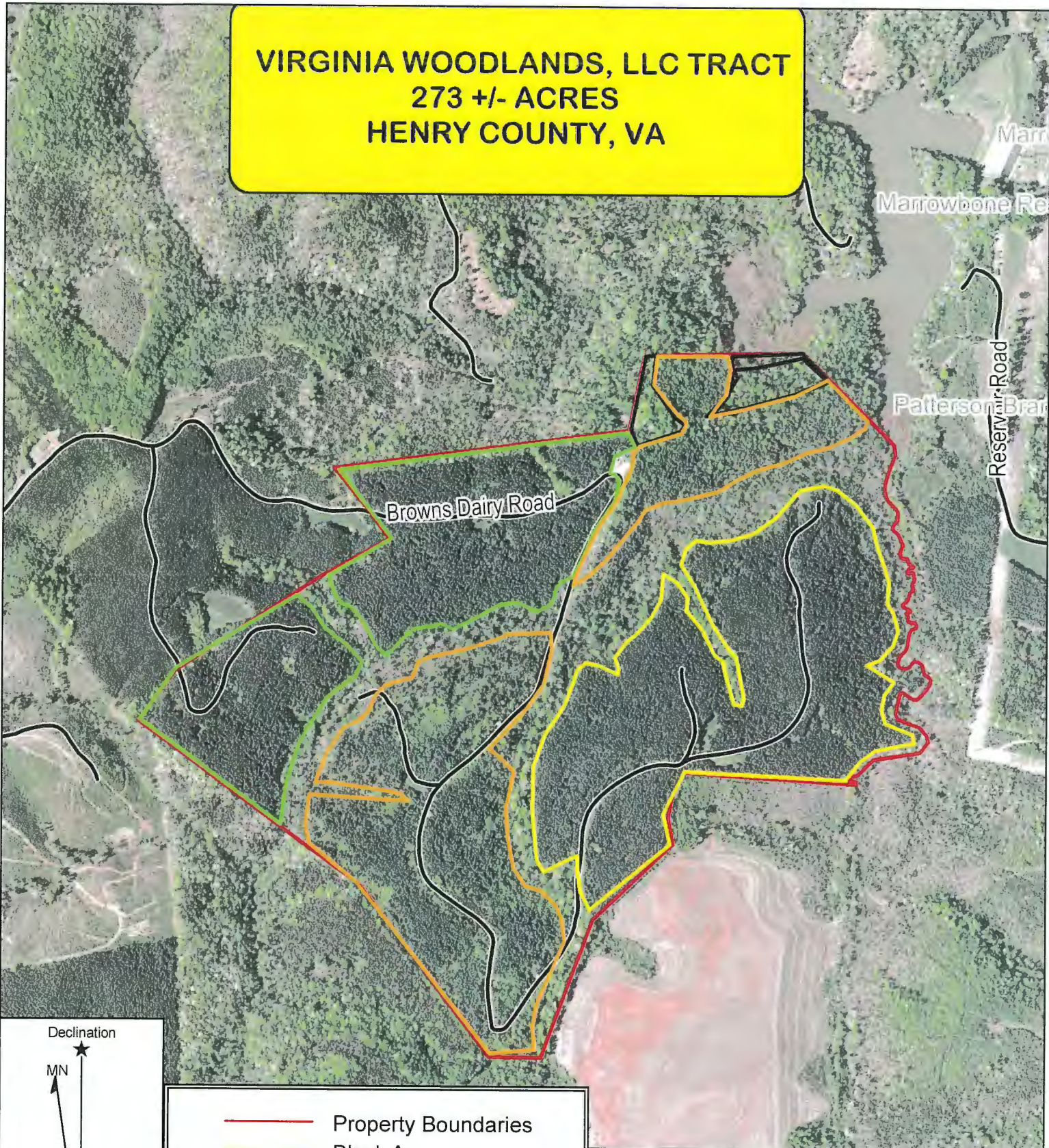


**VIRGINIA WOODLANDS, LLC TRACT
273 +/- ACRES
HENRY COUNTY, VA**



- Property Boundaries
- Block A
- Block B
- Block C
- Block D

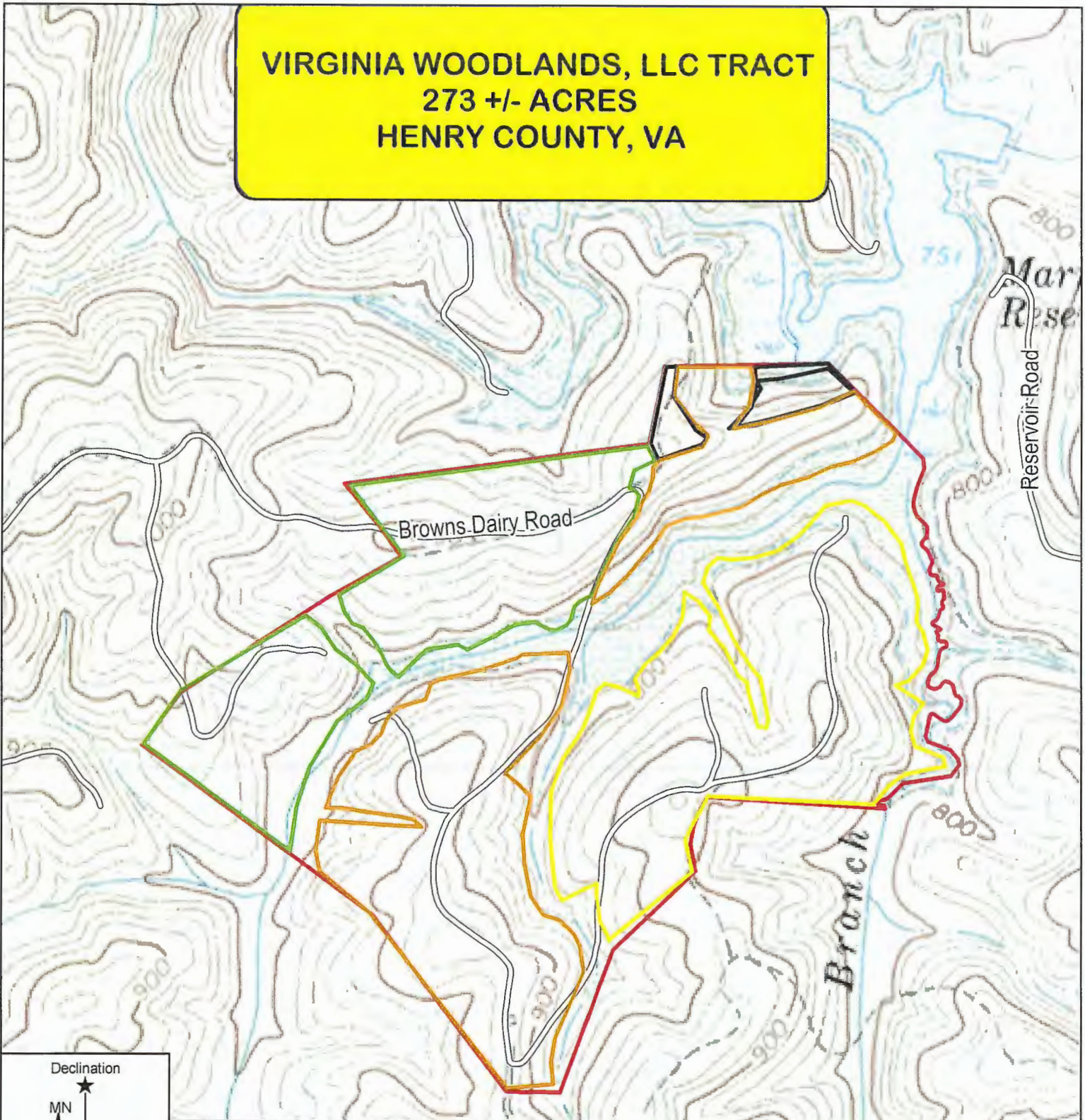


TIMBER MARKETING & MANAGEMENT INC.
Professional Forestry Consultants
 P.O. Box 396
 Chesterfield, VA 23832
 Ph (804) 796-9622
 Fax (804) 796-9693
www.tmmva.com

Name: Virginia Woodlands, LLC Tract
 Date: May 4, 2023
 Scale: 1 inch = 833 ft.

Location: Henry County, VA

**VIRGINIA WOODLANDS, LLC TRACT
273 +/- ACRES
HENRY COUNTY, VA**



Declination



MN 8.58° W

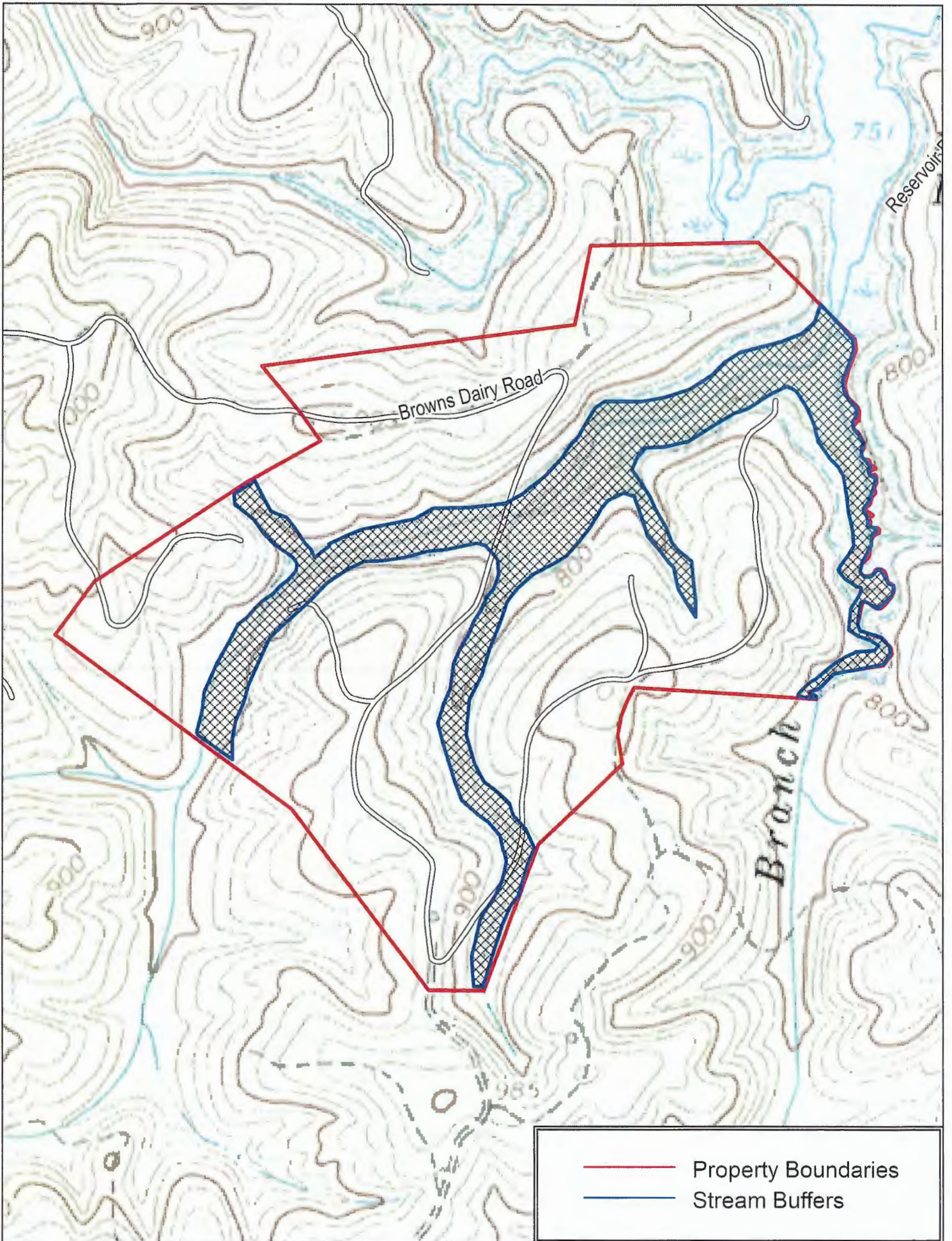
-  Property Boundaries
-  Block A
-  Block B
-  Block C
-  Block D



TIMBER MARKETING & MANAGEMENT INC.
Professional Forestry Consultants
P.O. Box 396
Chesterfield, VA 23832
Ph (804) 796-9622
Fax (804) 796-9693
www.tmmva.com

Name: Virginia Woodlands, LLC Tract
Date: May 4, 2023
Scale: 1 inch = 833 ft.

Location: Henry County, VA



Virginia Woodlands, LLC

Henry County, Virginia

273 +/- Acres

Prepared by Timber Marketing & Management, Inc.

Pulpwood:

Pine Pulpwood (average height model) **2,711 cords (7,048.6 tons)**

Pine Pulpwood (estimated overage) **992 cords (2,579.2 tons)**

***Pulpwood heights were calculated using average height models, estimated overage is to account for the exceptional above average height of the planted pine areas.**

Pine Topwood **211 cords (548.6 tons)**

Total Pine Pulpwood* *3,914 cords (10,176.4 tons)

Soft Hardwood Pulpwood **503 cords (1,408.4 tons)**

Hard Hardwood Pulpwood **180 cords (504 tons)**

Total Hardwood Pulpwood* *683 cords (1,912.4 tons)

Sawtimber:

Loblolly Pine	1,850.7	MBF
Yellow Poplar	157.9	MBF
White Oak	29.5	MBF
Hickory	29.3	MBF
Red Oak	20.2	MBF
Maple	19.0	MBF
Northern Red Oak	12.0	MBF
Beech	11.3	MBF
Chestnut Oak	9.8	MBF
Ash	6.8	MBF
Sycamore	4.1	MBF

*Cords are standard cords of 128 cubic feet

*MBF equals thousands of board feet, International 1/4" scale

Virginia Woodlands LLC Tract

Timber Marketing & Management, Inc.

Professional Forestry Consultants

P.O. Box 396

Chesterfield, VA 23832-0000

Phone: (804) 796-9622 • Fax: (804) 796-9693

Pulpwood Cruise: 7.5%

Sawtimber Cruise: 7.5%

Cruise Date: Thursday, April 6, 2023
 Owner's Name: Virginia Woodlands LLC
 County/State: Henry County, VA
 Acreage: 273+/-
 Cruise Type: Plot Cruise
 Harvest Type: Clear Cut
 Total BF/Acre: 7,878
 Pine Vol/Tree: 87.0
 Hardwood Vol/Tree: 187.4

Volume Legend:

- 1) Diameters shown in inches (DBH)
- 2) Logs measured in 16' increments
- 3) Sawtimber volumes are shown in thousands of board feet (MBF)
- 4) Volume scale used for each species of sawtimber is noted
- 5) Pulpwood volumes are shown in standard cords (128 cubic feet)

Comments:

Pulpwood

Standard Cord

DBH	Wood Classification							
	Pine		Soft Hardwood		Hard Hardwood		Cedar	
	# Trees	Volume	# Trees	Volume	# Trees	Volume	# Trees	Volume
6	5,040	227	3,013	118	1,173	46		
8	5,573	557	1,800	142	560	44		
10	7,440	1,235	1,267	168	400	53		
12	1,933	510	360	71	133	26		
14	480	181	13	4	40	11		
Total	20,467	2,711	6,453	503	2,307	180		

Ash - Sawtimber

International 1/4 Scale

DBH	Number of Logs							
	1-Log	2-Log	3-Log	4-Log	5-Log	# Trees	Volume	% of Total
14	13					13	1.1	16.4%
30	13					13	5.7	83.6%
Total	27					27	6.8	

Beech - Sawtimber

International 1/4 Scale

DBH	Number of Logs							
	1-Log	2-Log	3-Log	4-Log	5-Log	# Trees	Volume	% of Total
12	13					13	0.7	6.6%
14	13					13	1.1	9.8%
16	27					27	3.0	26.4%
22	13					13	2.9	26.0%
24	13					13	3.5	31.3%
Total	80					80	11.3	

Chestnut Oak - Sawtimber

International 1/4 Scale

DBH	Number of Logs							
	1-Log	2-Log	3-Log	4-Log	5-Log	# Trees	Volume	% of Total
12	27					27	1.5	15.2%
14	13					13	1.1	11.3%
16	13					13	1.5	15.2%
18		13				13	3.3	33.7%
20	13					13	2.4	24.6%
Total	67	13				80	9.8	

Hickory - Sawtimber

International 1/4 Scale

DBH	Number of Logs							
	1-Log	2-Log	3-Log	4-Log	5-Log	# Trees	Volume	% of Total
12	40					40	2.2	7.6%
14	27	13				40	4.1	14.0%
16	27	27				53	8.1	27.5%
18	27					27	3.8	13.1%
20	27					27	4.8	16.5%
24		13				13	6.3	21.3%
Total	147	53				200	29.3	

Loblolly Pine - Sawtimber

International 1/4 Scale

DBH	Number of Logs							
	1-Log	2-Log	3-Log	4-Log	5-Log	# Trees	Volume	% of Total
10	4,787	1,347				6,133	251.8	13.6%
12	3,267	4,827	2,053			10,147	873.4	47.2%
14	1,147	1,933	1,120	27		4,227	581.9	31.4%
16	253	253	187			693	124.3	6.7%
18	27	27	27			80	19.4	1.0%
Total	9,480	8,387	3,387	27		21,280	1,850.7	

Maple - Sawtimber

International 1/4 Scale

DBH	Number of Logs							
	1-Log	2-Log	3-Log	4-Log	5-Log	# Trees	Volume	% of Total
12	53					53	3.0	15.7%
14	40					40	3.3	17.5%
16	13	13				27	4.0	21.2%
20	13					13	2.4	12.7%
24		13				13	6.3	32.9%
Total	120	27				147	19.0	

Northern Red Oak - Sawtimber

International 1/4 Scale

DBH	Number of Logs							
	1-Log	2-Log	3-Log	4-Log	5-Log	# Trees	Volume	% of Total
18		13	13			27	7.8	65.0%
20		13				13	4.2	35.0%
Total		27	13			40	12.0	

Virginia Woodlands LLC Tract

Timber Marketing & Management, Inc.

Cruise Date: Thursday, April 6, 2023
 Owner's Name: Virginia Woodlands LLC
 County/State: Henry County, VA

Poplar - Sawtimber International 1/4 Scale

DBH	Number of Logs					# Trees	Volume	% of Total
	1-Log	2-Log	3-Log	4-Log	5-Log			
12	213					213	11.9	7.6%
14	147	53				200	19.7	12.5%
16	13	40	53			107	22.7	14.4%
18	13	27	27			67	17.5	11.1%
20			80	13		93	41.0	26.0%
22		53	27			80	34.7	22.0%
24				13		13	10.3	6.5%
Total	387	173	187	27		773	157.9	

Red Oak - Sawtimber International 1/4 Scale

DBH	Number of Logs					# Trees	Volume	% of Total
	1-Log	2-Log	3-Log	4-Log	5-Log			
18		13				13	3.3	16.3%
20	13	13				27	6.6	32.6%
22		27				27	10.3	51.0%
Total	13	53				67	20.2	

Sycamore - Sawtimber International 1/4 Scale

DBH	Number of Logs					# Trees	Volume	% of Total
	1-Log	2-Log	3-Log	4-Log	5-Log			
14	13					13	1.1	27.0%
16	27					27	3.0	73.0%
Total	40					40	4.1	

White Oak - Sawtimber International 1/4 Scale

DBH	Number of Logs					# Trees	Volume	% of Total
	1-Log	2-Log	3-Log	4-Log	5-Log			
12	27					27	1.5	5.1%
14	13	40				53	6.7	22.9%
18		27	27			53	15.6	52.8%
20			13			13	5.7	19.3%
Total	40	67	40			147	29.5	

Sawtimber Volume by Timber Type

Timber Type	# Trees	Volume	Avg BF/Tree	% of Total
Hardwood	1,600	299.9	187.4	13.9%
Pine	21,280	1,850.7	87.0	86.1%
Total	22,880	2,150.6	94.0	

Sawtimber Volume by DBH

DBH	# Trees	Volume	Avg BF/Tree	% of Total
10	6,133	251.8	41.1	11.7%
12	10,520	894.3	85.0	41.6%
14	4,613	620.1	134.4	28.8%
16	947	166.6	176.0	7.7%
18	280	70.7	252.6	3.3%
20	200	67.1	335.6	3.1%
22	120	48.0	399.9	2.2%
24	53	26.4	494.3	1.2%
30	13	5.7	424.0	0.3%
Total	22,880	2,150.6	94.0	

Sawtimber Volume by Species

Species	# Trees	Volume	Avg BF/Tree	% of Total
Ash	27	6.8	253.5	0.3%
Beech	80	11.3	141.7	0.5%
Chestnut Oak	80	9.8	122.7	0.5%
Hickory	200	29.3	146.5	1.4%
Loblolly Pine	21,280	1,850.7	87.0	86.1%
Maple	147	19.0	129.5	0.9%
Northern Red Oak	40	12.0	299.3	0.6%
Poplar	773	157.9	204.2	7.3%
Red Oak	67	20.2	303.4	0.9%
Sycamore	40	4.1	102.3	0.2%
White Oak	147	29.5	201.2	1.4%
Total	22,880	2,150.6	94.0	

Virginia Woodlands LLC - Block A

Timber Marketing & Management, Inc.

Professional Forestry Consultants

P.O. Box 396

Chesterfield, VA 23832-0000

Phone: (804) 796-9622 • Fax: (804) 796-9693

Pulpwood Cruise: 7.5%

Sawtimber Cruise: 7.5%

Cruise Date: Thursday, April 6, 2023
 Owner's Name: Virginia Woodlands LLC
 County/State: Henry County, VA
 Acreage: 60+/-
 Cruise Type: Plot Cruise
 Harvest Type: Clear Cut
 Total BF/Acre: 9,592
 Pine Vol/Tree: 83.2

Volume Legend:

- 1) Diameters shown in inches (DBH)
- 2) Logs measured in 16' increments
- 3) Sawtimber volumes are shown in thousands of board feet (MBF)
- 4) Volume scale used for each species of sawtimber is noted
- 5) Pulpwood volumes are shown in standard cords (128 cubic feet)

Comments:

Pulpwood

Standard Cord

DBH	Wood Classification						# Trees	Volume
	Pine		Soft Hardwood		Hard Hardwood			
	# Trees	Volume	# Trees	Volume	# Trees	Volume	# Trees	Volume
6	1,240	56	67	3	67	3		
8	1,307	131	80	6	27	2		
10	1,320	219	93	12	13	2		
12	400	106	13	3				
14	67	25						
Total	4,333	536	253	24	107	6		

Loblolly Pine - Sawtimber

International 1/4 Scale

DBH	Number of Logs					# Trees	Volume	% of Total
	1-Log	2-Log	3-Log	4-Log	5-Log			
10	1,933	720				2,653	112.1	19.5%
12	813	1,213	920			2,947	267.6	46.5%
14	280	440	427			1,147	164.6	28.6%
16	67	53	53			173	31.3	5.4%
Total	3,093	2,427	1,400			6,920	575.5	

Sawtimber Volume by Timber Type

Timber Type	# Trees	Volume	Avg BF/Tree	% of Total
Pine	6,920	575.5	83.2	100.0%
Total	6,920	575.5	83.2	

Sawtimber Volume by DBH

DBH	# Trees	Volume	Avg BF/Tree	% of Total
10	2,653	112.1	42.2	19.5%
12	2,947	267.6	90.8	46.5%
14	1,147	164.6	143.6	28.6%
16	173	31.3	180.3	5.4%
Total	6,920	575.5	83.2	

Sawtimber Volume by Species

Species	# Trees	Volume	Avg BF/Tree	% of Total
Loblolly Pine	6,920	575.5	83.2	100.0%
Total	6,920	575.5	83.2	

Virginia Woodlands LLC - Block B

Timber Marketing & Management, Inc.

Professional Forestry Consultants

P.O. Box 396

Chesterfield, VA 23832-0000

Phone: (804) 796-9622 • Fax: (804) 796-9693

Pulpwood Cruise: 7.5%

Sawtimber Cruise: 7.5%

Cruise Date: Thursday, April 6, 2023
 Owner's Name: Virginia Woodlands LLC
 County/State: Henry County, VA
 Acreage: 82+/-
 Cruise Type: Plot Cruise
 Harvest Type: Clear Cut
 Total BF/Acre: 6,108
 Pine Vol/Tree: 89.2
 Hardwood Vol/Tree: 95.3

Volume Legend:

- 1) Diameters shown in inches (DBH)
- 2) Logs measured in 16' increments
- 3) Sawtimber volumes are shown in thousands of board feet (MBF)
- 4) Volume scale used for each species of sawtimber is noted
- 5) Pulpwood volumes are shown in standard cords (128 cubic feet)

Comments:

Pulpwood

Standard Cord

DBH	Wood Classification							
	Pine		Soft Hardwood		Hard Hardwood		Cedar	
# Trees	Volume	# Trees	Volume	# Trees	Volume	# Trees	Volume	
6	707	32	1,440	56	293	11		
8	1,080	108	1,013	80	173	14		
10	1,160	193	720	96	67	9		
12	80	21	253	50	40	8		
14	13	5						
Total	3,040	359	3,427	282	573	42		

Beech - Sawtimber

International 1/4 Scale

DBH	Number of Logs							
	1-Log	2-Log	3-Log	4-Log	5-Log	# Trees	Volume	% of Total
16	13					13	1.5	100.0%
Total	13					13	1.5	

Loblolly Pine - Sawtimber

International 1/4 Scale

DBH	Number of Logs							
	1-Log	2-Log	3-Log	4-Log	5-Log	# Trees	Volume	% of Total
10	987	93				1,080	41.0	8.8%
12	987	1,587	253			2,827	231.6	49.9%
14	320	560	200			1,080	142.7	30.8%
16	13	93	80			187	39.7	8.6%
18			27			27	9.0	1.9%
Total	2,307	2,333	560			5,200	464.0	

Poplar - Sawtimber

International 1/4 Scale

DBH	Number of Logs							
	1-Log	2-Log	3-Log	4-Log	5-Log	# Trees	Volume	% of Total
12	147					147	8.2	32.6%
14	133	13				147	12.9	51.4%
16	13	13				27	4.0	16.0%
Total	293	27				320	25.2	

Sycamore - Sawtimber

International 1/4 Scale

DBH	Number of Logs							
	1-Log	2-Log	3-Log	4-Log	5-Log	# Trees	Volume	% of Total
14	13					13	1.1	42.6%
16	13					13	1.5	57.4%
Total	27					27	2.6	

White Oak - Sawtimber

International 1/4 Scale

DBH	Number of Logs							
	1-Log	2-Log	3-Log	4-Log	5-Log	# Trees	Volume	% of Total
14		13				13	1.9	24.8%
20			13			13	5.7	75.2%
Total		13	13			27	7.6	

Sawtimber Volume by Timber Type

Timber Type	# Trees	Volume	Avg BF/Tree	% of Total
Hardwood	387	36.9	95.3	7.4%
Pine	5,200	464.0	89.2	92.6%
Total	5,587	500.9	89.7	

Sawtimber Volume by DBH

DBH	# Trees	Volume	Avg BF/Tree	% of Total
10	1,080	41.0	38.0	8.2%
12	2,973	239.8	80.7	47.9%
14	1,253	158.7	126.6	31.7%
16	240	46.7	194.7	9.3%
18	27	9.0	336.0	1.8%
20	13	5.7	427.0	1.1%
Total	5,587	500.9	89.7	

Sawtimber Volume by Species

Species	# Trees	Volume	Avg BF/Tree	% of Total
Beech	13	1.5	112.0	0.3%
Loblolly Pine	5,200	464.0	89.2	92.6%
Poplar	320	25.2	78.7	5.0%
Sycamore	27	2.6	97.5	0.5%
White Oak	27	7.6	284.0	1.5%
Total	5,587	500.9	89.7	

Virginia Woodlands LLC - Block C

Timber Marketing & Management, Inc.

Professional Forestry Consultants

P.O. Box 396

Chesterfield, VA 23832-0000

Phone: (804) 796-9622 • Fax: (804) 796-9693

Pulpwood Cruise: 7.5%

Sawtimber Cruise: 7.5%

Cruise Date: Thursday, April 6, 2023
 Owner's Name: Virginia Woodlands LLC
 County/State: Henry County, VA
 Acreage: 84+/-
 Cruise Type: Plot Cruise
 Harvest Type: Clear Cut
 Total BF/Acre: 9,269
 Pine Vol/Tree: 87.2
 Hardwood Vol/Tree: 196.0

Volume Legend:

- 1) Diameters shown in inches (DBH)
- 2) Logs measured in 16' increments
- 3) Sawtimber volumes are shown in thousands of board feet (MBF)
- 4) Volume scale used for each species of sawtimber is noted
- 5) Pulpwood volumes are shown in standard cords (128 cubic feet)

Comments:

Pulpwood Standard Cord

DBH	Wood Classification							
	Pine		Soft Hardwood		Hard Hardwood		Cedar	
	# Trees	Volume	# Trees	Volume	# Trees	Volume	# Trees	Volume
6	2,947	133	440	17	160	6		
8	3,053	305	173	14	40	3		
10	4,867	808	93	12	40	5		
12	1,413	373	13	3	27	5		
14	387	146			13	4		
Total	12,667	1,765	720	46	280	24		

Loblolly Pine - Sawtimber International 1/4 Scale

DBH	Number of Logs					# Trees	Volume	% of Total
	1-Log	2-Log	3-Log	4-Log	5-Log			
10	1,840	493				2,333	95.3	12.3%
12	1,453	1,987	827			4,267	363.4	47.0%
14	547	920	413	27		1,907	257.7	33.3%
16	173	107	27			307	46.5	6.0%
18	27	27				53	10.5	1.4%
Total	4,040	3,533	1,267	27		8,867	773.4	

Poplar - Sawtimber International 1/4 Scale

DBH	Number of Logs					# Trees	Volume	% of Total
	1-Log	2-Log	3-Log	4-Log	5-Log			
12	13					13	0.7	14.3%
18			13			13	4.5	85.7%
Total	13		13			27	5.2	

Sawtimber Volume by Timber Type

Timber Type	# Trees	Volume	Avg BF/Tree	% of Total
Hardwood	27	5.2	196.0	0.7%
Pine	8,867	773.4	87.2	99.3%
Total	8,893	778.6	87.6	

Sawtimber Volume by DBH

DBH	# Trees	Volume	Avg BF/Tree	% of Total
10	2,333	95.3	40.9	12.2%
12	4,260	364.1	85.1	46.8%
14	1,907	257.7	135.2	33.1%
16	307	46.5	151.7	6.0%
18	67	14.9	224.0	1.9%
Total	8,893	778.6	87.6	

Sawtimber Volume by Species

Species	# Trees	Volume	Avg BF/Tree	% of Total
Loblolly Pine	8,867	773.4	87.2	99.3%
Poplar	27	5.2	196.0	0.7%
Total	8,893	778.6	87.6	

Virginia Woodlands LLC - Block D

Timber Marketing & Management, Inc.

Professional Forestry Consultants

P.O. Box 396

Chesterfield, VA 23832-0000

Phone: (804) 796-9622 • Fax: (804) 796-9693

Pulpwood Cruise: 7.5%

Sawtimber Cruise: 7.5%

Cruise Date: Thursday, April 6, 2023
 Owner's Name: Virginia Woodlands LLC
 County/State: Henry County, VA
 Acreage: 7+/-
 Cruise Type: Plot Cruise
 Harvest Type: Clear Cut
 Total BF/Acre: 14,025
 Pine Vol/Tree: 186.0
 Hardwood Vol/Tree: 331.0

Volume Legend:

- 1) Diameters shown in inches (DBH)
- 2) Logs measured in 16' increments
- 3) Sawtimber volumes are shown in thousands of board feet (MBF)
- 4) Volume scale used for each species of sawtimber is noted
- 5) Pulpwood volumes are shown in standard cords (128 cubic feet)

Comments:

Pulpwood Standard Cord

DBH	Wood Classification							
	Pine		Soft Hardwood		Hard Hardwood		Cedar	
	# Trees	Volume	# Trees	Volume	# Trees	Volume	# Trees	Volume
6	13	1	227	9	53	2		
8			133	11	40	3		
10			107	14	80	11		
12			40	8	13	3		
14	13	5	13	4				
Total	27	6	520	45	187	19		

Ash - Sawtimber International 1/4 Scale

DBH	Number of Logs							
	1-Log	2-Log	3-Log	4-Log	5-Log	# Trees	Volume	% of Total
14	13					13	1.1	16.4%
30	13					13	5.7	83.6%
Total	27					27	6.8	

Hickory - Sawtimber International 1/4 Scale

DBH	Number of Logs							
	1-Log	2-Log	3-Log	4-Log	5-Log	# Trees	Volume	% of Total
14	13					13	1.1	7.8%
18	13					13	1.9	13.6%
20	27					27	4.8	34.2%
24		13				13	6.3	44.3%
Total	53	13				67	14.1	

Loblolly Pine - Sawtimber International 1/4 Scale

DBH	Number of Logs							
	1-Log	2-Log	3-Log	4-Log	5-Log	# Trees	Volume	% of Total
14			53			53	9.9	100.0%
Total			53			53	9.9	

Maple - Sawtimber International 1/4 Scale

DBH	Number of Logs							
	1-Log	2-Log	3-Log	4-Log	5-Log	# Trees	Volume	% of Total
14	13					13	1.1	15.0%
24		13				13	6.3	85.0%
Total	13	13				27	7.4	

Poplar - Sawtimber International 1/4 Scale

DBH	Number of Logs							
	1-Log	2-Log	3-Log	4-Log	5-Log	# Trees	Volume	% of Total
18		13				13	3.3	8.8%
20			40			40	17.1	45.3%
22			13			13	7.0	18.7%
24				13		13	10.3	27.3%
Total		13	53	13		80	37.7	

Red Oak - Sawtimber International 1/4 Scale

DBH	Number of Logs							
	1-Log	2-Log	3-Log	4-Log	5-Log	# Trees	Volume	% of Total
18		13				13	3.3	18.6%
20		13				13	4.2	23.5%
22		27				27	10.3	57.9%
Total		53				53	17.8	

White Oak - Sawtimber International 1/4 Scale

DBH	Number of Logs							
	1-Log	2-Log	3-Log	4-Log	5-Log	# Trees	Volume	% of Total
18			13			13	4.5	100.0%
Total			13			13	4.5	

Virginia Woodlands LLC - Block D

Timber Marketing & Management, Inc.

Cruise Date: Thursday, April 6, 2023
Owner's Name: Virginia Woodlands LLC
County/State: Henry County, VA

Sawtimber Volume by Timber Type

<u>Timber Type</u>	<u># Trees</u>	<u>Volume</u>	<u>Avg BF/Tree</u>	<u>% of Total</u>
Hardwood	267	88.3	331.0	89.9%
Pine	53	9.9	186.0	10.1%
Total	320	98.2	306.8	

Sawtimber Volume by DBH

<u>DBH</u>	<u># Trees</u>	<u>Volume</u>	<u>Avg BF/Tree</u>	<u>% of Total</u>
14	93	13.2	141.9	13.5%
18	53	13.0	244.0	13.3%
20	80	26.1	326.2	26.6%
22	40	17.4	434.0	17.7%
24	40	22.8	570.3	23.2%
30	13	5.7	424.0	5.8%
Total	320	98.2	306.8	

Sawtimber Volume by Species

<u>Species</u>	<u># Trees</u>	<u>Volume</u>	<u>Avg BF/Tree</u>	<u>% of Total</u>
Ash	27	6.8	253.5	6.9%
Hickory	67	14.1	211.6	14.4%
Loblolly Pine	53	9.9	186.0	10.1%
Maple	27	7.4	276.0	7.5%
Poplar	80	37.7	471.7	38.4%
Red Oak	53	17.8	334.0	18.1%
White Oak	13	4.5	336.0	4.6%
Total	320	98.2	306.8	

Virginia Woodlands LLC - SMZ

Timber Marketing & Management, Inc.

Professional Forestry Consultants

P.O. Box 396

Chesterfield, VA 23832-0000

Phone: (804) 796-9622 • Fax: (804) 796-9693

Pulpwood Cruise: 7.5%

Sawtimber Cruise: 7.5%

Cruise Date: Thursday, April 6, 2023
 Owner's Name: Virginia Woodlands LLC
 County/State: Henry County, VA
 Acreage: 40+/-
 Cruise Type: Plot Cruise
 Harvest Type: Clear Cut
 Total BF/Acre: 4,935
 Pine Vol/Tree: 115.9
 Hardwood Vol/Tree: 184.3

Volume Legend:

- 1) Diameters shown in inches (DBH)
- 2) Logs measured in 16' increments
- 3) Sawtimber volumes are shown in thousands of board feet (MBF)
- 4) Volume scale used for each species of sawtimber is noted
- 5) Pulpwood volumes are shown in standard cords (128 cubic feet)

Comments:

Pulpwood **Standard Cord**

DBH	Wood Classification							
	Pine		Soft Hardwood		Hard Hardwood		Cedar	
# Trees	Volume	# Trees	Volume	# Trees	Volume	# Trees	Volume	
6	133	6	840	33	600	23		
8	133	13	400	32	280	22		
10	93	15	253	34	200	27		
12	40	11	80	16	53	11		
14			27	7	27	7		
Total	400	45	1,600	121	1,160	90		

Beech - Sawtimber **International 1/4 Scale**

DBH	Number of Logs					# Trees	Volume	% of Total
	1-Log	2-Log	3-Log	4-Log	5-Log			
12	13					13	0.7	7.6%
14	13					13	1.1	11.2%
16	13					13	1.5	15.2%
22	13					13	2.9	29.9%
24	13					13	3.5	36.0%
Total	67					67	9.8	

Chestnut Oak - Sawtimber **International 1/4 Scale**

DBH	Number of Logs					# Trees	Volume	% of Total
	1-Log	2-Log	3-Log	4-Log	5-Log			
12	27					27	1.5	15.2%
14	13					13	1.1	11.3%
16	13					13	1.5	15.2%
18		13				13	3.3	33.7%
20	13					13	2.4	24.6%
Total	67	13				80	9.8	

Hickory - Sawtimber **International 1/4 Scale**

DBH	Number of Logs					# Trees	Volume	% of Total
	1-Log	2-Log	3-Log	4-Log	5-Log			
12	40					40	2.2	14.7%
14	13	13				27	3.0	19.6%
16	27	27				53	8.1	53.0%
18	13					13	1.9	12.6%
Total	93	40				133	15.2	

Loblolly Pine - Sawtimber **International 1/4 Scale**

DBH	Number of Logs					# Trees	Volume	% of Total
	1-Log	2-Log	3-Log	4-Log	5-Log			
10	27	40				67	3.3	11.9%
12	13	40	53			107	10.8	38.9%
14		13	27			40	6.8	24.6%
16			27			27	6.8	24.5%
Total	40	93	107			240	27.8	

Maple - Sawtimber **International 1/4 Scale**

DBH	Number of Logs					# Trees	Volume	% of Total
	1-Log	2-Log	3-Log	4-Log	5-Log			
12	53					53	3.0	25.7%
14	27					27	2.2	19.0%
16	13	13				27	4.0	34.6%
20	13					13	2.4	20.7%
Total	107	13				120	11.6	

Northern Red Oak - Sawtimber **International 1/4 Scale**

DBH	Number of Logs					# Trees	Volume	% of Total
	1-Log	2-Log	3-Log	4-Log	5-Log			
18		13	13			27	7.8	65.0%
20		13				13	4.2	35.0%
Total		27	13			40	12.0	

Virginia Woodlands LLC - SMZ

Timber Marketing & Management, Inc.

Cruise Date: Thursday, April 6, 2023
 Owner's Name: Virginia Woodlands LLC
 County/State: Henry County, VA

Poplar - Sawtimber International 1/4 Scale

DBH	Number of Logs					# Trees	Volume	% of Total
	1-Log	2-Log	3-Log	4-Log	5-Log			
12	53					53	3.0	3.3%
14	13	40				53	6.7	7.5%
16		27	53			80	18.7	20.9%
18	13	13	13			40	9.7	10.8%
20			40	13		53	23.9	26.6%
22		53	13			67	27.7	30.8%
Total	80	133	120	13		347	89.7	

Red Oak - Sawtimber International 1/4 Scale

DBH	Number of Logs					# Trees	Volume	% of Total
	1-Log	2-Log	3-Log	4-Log	5-Log			
20	13					13	2.4	100.0%
Total	13					13	2.4	

Sycamore - Sawtimber International 1/4 Scale

DBH	Number of Logs					# Trees	Volume	% of Total
	1-Log	2-Log	3-Log	4-Log	5-Log			
16	13					13	1.5	100.0%
Total	13					13	1.5	

White Oak - Sawtimber International 1/4 Scale

DBH	Number of Logs					# Trees	Volume	% of Total
	1-Log	2-Log	3-Log	4-Log	5-Log			
12	27					27	1.5	8.6%
14	13	27				40	4.9	27.9%
18		27	13			40	11.1	63.6%
Total	40	53	13			107	17.5	

Sawtimber Volume by Timber Type

Timber Type	# Trees	Volume	Avg BF/Tree	% of Total
Hardwood	920	169.6	184.3	85.9%
Pine	240	27.8	115.9	14.1%
Total	1,160	197.4	170.2	

Sawtimber Volume by DBH

DBH	# Trees	Volume	Avg BF/Tree	% of Total
10	67	3.3	49.8	1.7%
12	320	22.8	71.2	11.5%
14	213	25.9	121.3	13.1%
16	227	42.1	185.8	21.3%
18	133	33.8	253.6	17.1%
20	107	35.3	331.3	17.9%
22	80	30.6	382.8	15.5%
24	13	3.5	266.0	1.8%
Total	1,160	197.4	170.2	

Sawtimber Volume by Species

Species	# Trees	Volume	Avg BF/Tree	% of Total
Beech	67	9.8	147.6	5.0%
Chestnut Oak	80	9.8	122.7	5.0%
Hickory	133	15.2	114.0	7.7%
Loblolly Pine	240	27.8	115.9	14.1%
Maple	120	11.6	97.0	5.9%
Northern Red Oak	40	12.0	299.3	6.1%
Poplar	347	89.7	258.9	45.5%
Red Oak	13	2.4	181.0	1.2%
Sycamore	13	1.5	112.0	0.8%
White Oak	107	17.5	163.6	8.8%
Total	1,160	197.4	170.2	