

231.28 +/- Acres in Antelope County, NE

This Listing features a wide array of topography from the gently sloping cropland on the irrigated cropland to the rugged, timber covered draws on the north! The land is located along a county blacktop road on the west and a gravel road to the south. A large percentage of the place has been improved with new grass seeding and high quality 5 wire fencing on both the interiors and a large part of the boundary fences! Pride of ownership on this one is second to none!



"Dedicated to the Success of Our Clients"

TRAVIS DOUGHERTY


Broker & Auctioneer

Office (402) 336-4444 • Mobile (402) 336-7612

320 South 4th Street • O'Neill, NE 68763

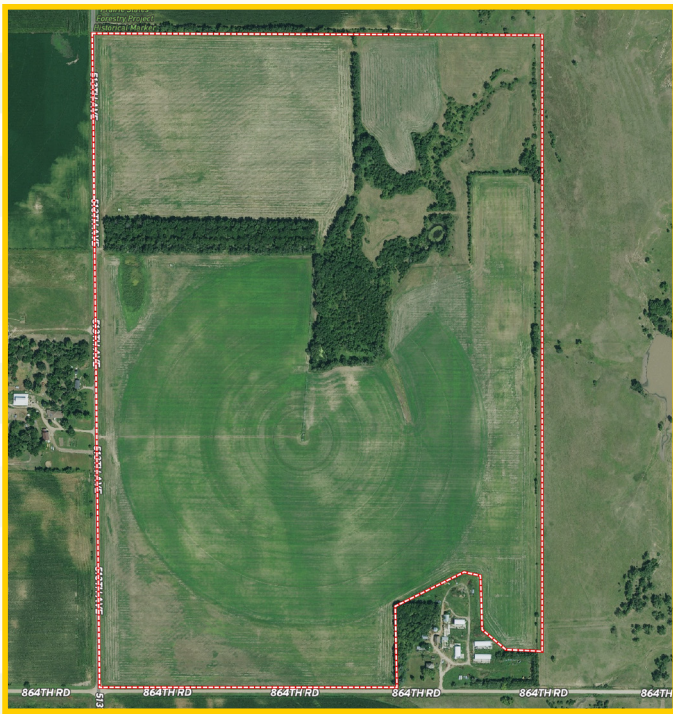
PO Box 857 • Toll Free (844) LND-MRKT

Website: www.LandMarketers.com

We are also on Facebook 

Land Management • Live Auctions • Online Auctions • Sales
and Tax Deferred Exchanges in Nebraska, Iowa & South Dakota





231.28 +/- Acres in Antelope Co, NE

LEGAL DESCRIPTION:

Available Upon Request

DEEDED ACRES: 231.28 +/-

LOCATION: From Orchard, NE, 1 mile north on 513th Ave. to the Southwest Corner of the property.

REAL ESTATE TAXES: \$7,854.22 (2022)

CERTIFIED IRRIGATED ACRES:

128 (Upper Elkhorn NRD)

WELL INFORMATION:

Registered Well: G-048757

Year Drilled 1976

100' Static Water Level

258' Pumping Level

291' Well Depth

6" Column Diameter

IRRIGATION EQUIPMENT:

6 Tower Zimmatic Center Pivot (4542)

Nozzled at 450.34 GPM @ 55 PSI

80 HP Amarillo Gearhead (239950)

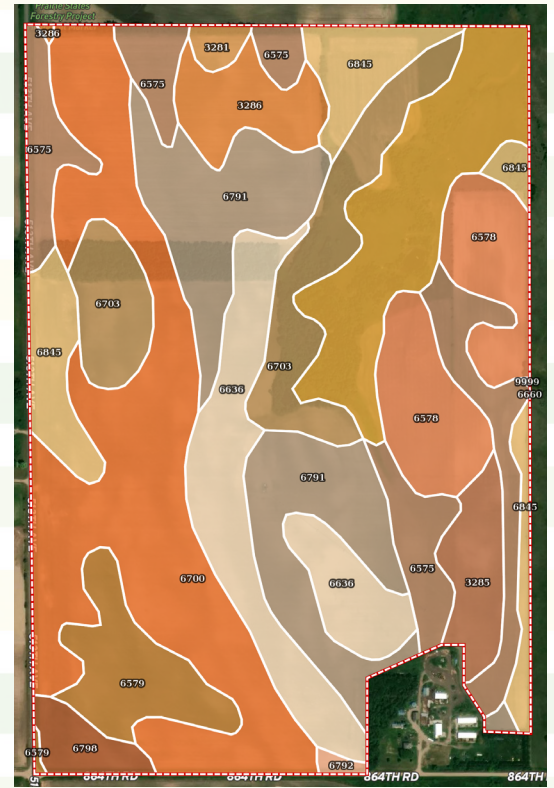
Veri Line Pump (72074)

4 Cyl. Cummins Power Unit (30213285)

Generator (AD11168)

2,000 Gallon Fuel Tank

LISTING PRICE: \$1,100,000.00



6700	Thurman loamy fine sand, 0 to 2 percent slopes	48.31	20.86	0	49	3e
6791	Loretto loam, 0 to 2 percent slopes	30.19	13.03	0	72	1
6575	Trent silt loam, 0 to 2 percent slopes	23.28	10.05	0	81	1
6636	Boelus loamy fine sand, 0 to 2 percent slopes	23.09	9.97	0	57	3e
6660	Brunswick-Paka complex, 11 to 30 percent slopes	22.23	9.6	0	32	6e
6703	Thurman loamy fine sand, 2 to 6 percent slopes	19.82	8.56	45	49	4e
6578	Ortello fine sandy loam, 0 to 2 percent slopes	18.26	7.88	0	65	2e
6845	Ortello fine sandy loam, 2 to 6 percent slopes	16.31	7.04	0	65	3e
6579	Ortello loam, 0 to 1 percent slopes	10.31	4.45	0	51	1
3286	Paka loam, 2 to 6 percent slopes	7.66	3.31	0	64	2e
3285	Paka loam, 0 to 2 percent slopes	6.52	2.81	0	65	1
6798	Loretto sandy loam, 0 to 3 percent slopes	3.66	1.58	0	68	2e
3281	Paka complex, 2 to 6 percent slopes	1.39	0.6	0	51	3e
6792	Loretto loam, 2 to 6 percent slopes	0.58	0.25	0	72	2e
9999	Water	0.02	0.01	0	-	-
TOTALS		231.63(*)	100%	3.85	58.17	2.64



Land Marketers Realty has obtained this information from sources we have deemed reliable. All boundary lines contained in any advertising are for visual aid only and do not represent the location of any existing fence lines. Land Marketers Realty makes no guarantees, warranty or representation about the accuracy of this information. This information is submitted subject to the possibility of errors, omissions, price changes, or any other conditions. All prospective buyers are urged to consult with their own tax and legal counsel and conduct their own investigation of the property or transaction. Copyright © 2022 Land Marketers Realty. All rights reserved. No part of this publication may be reproduced, distributed, or transmitted in any form or by any means, including photocopying, recording, or other electronic or mechanical methods, without the prior written permission of Land Marketers Realty.