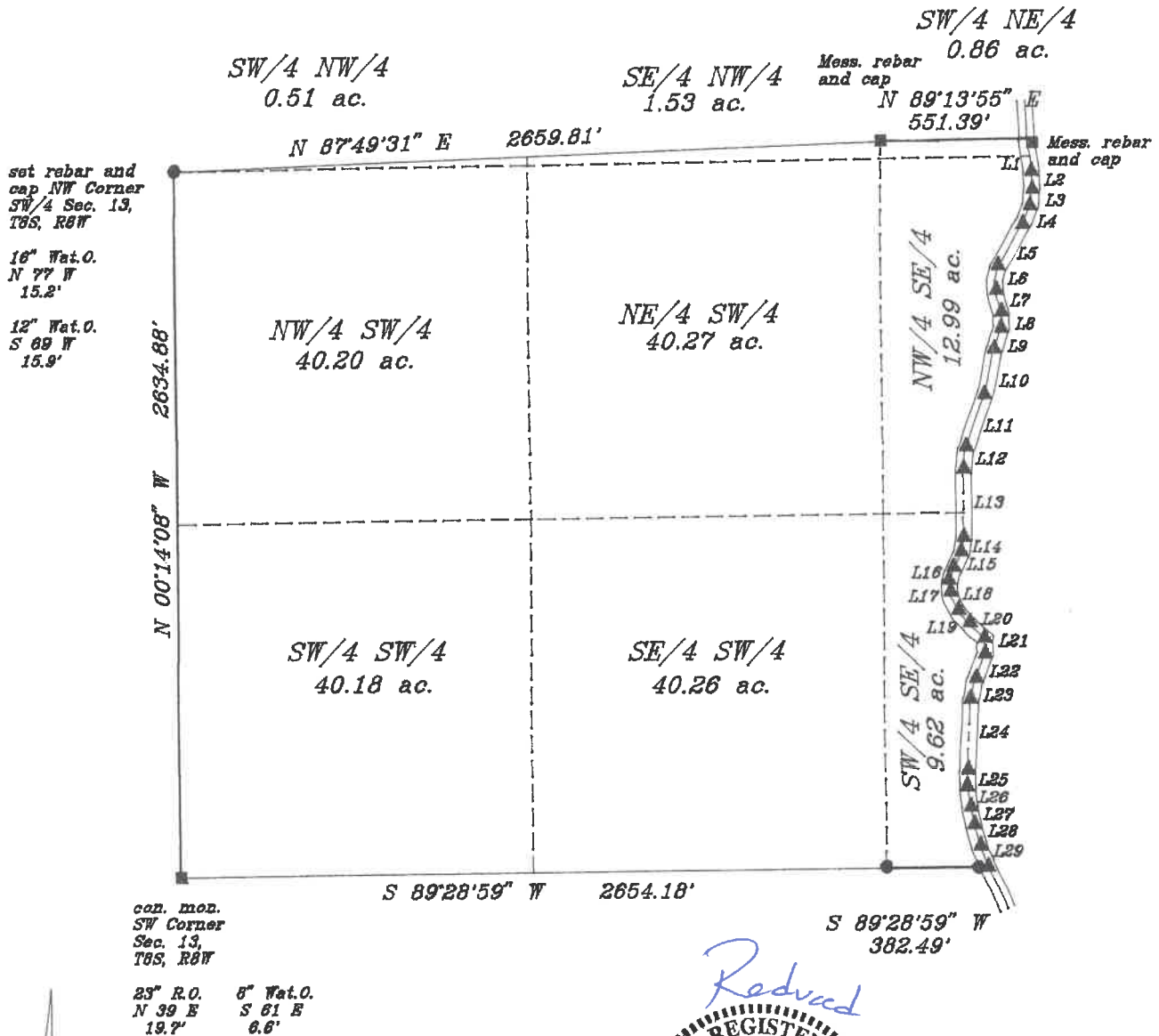


# SURVEY PLAT

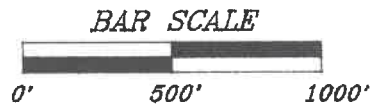
See the attached page for the legal description and line data.



### LEGEND

- Monument set
- Monument found
- Calculated corner

NOTE: All monuments set are 1/2" rebars and caps.



Solar Observation.

Scale  
1" = 500'

Date  
Oct. 10, 2022

Drawn By  
Clay Wynn

Drawing Number  
40-1212F

Prepared For  
Fratesi

**WYNN SURVEYING INC.**

326 Friendship Cir. Star City, AR 71667 (870)-628-4568

Certified by  
Robert C. Wynn, Lincoln County Surveyor, PLS 1033

Brief Legal  
The SW/4, part of the W/2 SE/4, and part of the S/2 NW/4 of  
Sec. 13, T8S, R8W, Lincoln Co. Ar.

500-08S-08W-0-13-203-40-1033

LEGAL (40-1212F): Beginning at the Southwest Corner of the Southwest Quarter (SW/4) of Section 13, Township 8 South, Range 8 West, Lincoln County, Arkansas, running thence North 00 degrees 14'08" West 2634.88 feet to the Northwest Corner of Said SW/4; thence North 87 degrees 49'31" East 2659.81 feet; thence North 89 degrees 13'55" East 551.39 feet to the center of a gravel road; thence the following calls along the center of Said road South 8 degrees 13'34" East 124.65 feet; thence South 2 degrees 43'44" East 69.20 feet; thence South 7 degrees 51'02" West 62.48 feet; thence South 21 degrees 38'23" West 62.55 feet; thence South 29 degrees 59'28" West 205.21 feet; thence South 4 degrees 19'05" West 91.66 feet; thence South 16 degrees 10'40" East 85.30 feet; thence South 3 degrees 25'48" West 47.43 feet; thence South 19 degrees 23'56" West 82.93 feet; thence South 12 40'38" West 171.08 feet; thence South 19 degrees 47'15" West 222.82 feet; thence South 6 degrees 42'21" West 70.58 feet; thence South 00 degrees 37'58" East 259.16 feet; thence South 12 degrees 17'44" West 56.52 feet; thence South 25 degrees 59'02" West 69.82 feet; thence South 15 degrees 26'12" West 46.95 feet; thence South 00 degrees 57'54" East 47.46 feet; thence South 25 degrees 10'36" East 69.13 feet; thence South 40 degrees 56'09" East 65.29 feet; thence South 46 degrees 53'01" East 83.56 feet; thence South 2 degrees 19'04" West 53.15 feet; thence South 22 degrees 19'06" West 101.52 feet; thence South 12 degrees 34'44" West 75.79 feet; thence South 3 degrees 11'52" West 269.57 feet; thence South 00 degrees 26'59" West 53.97 feet; thence South 7 degrees 30'10" East 76.24 feet; thence South 10 degrees 54'54" East 73.80 feet; thence South 16 degrees 10'27" East 71.45 feet; thence South 22 degrees 13'13" East 86.87 feet to the South line of the Southwest Quarter (SW/4) of the Southeast Quarter (SE/4); thence South 89 degrees 28'59" West 382.49 feet to the Southeast Corner of the Said SW/4; thence South 89 degrees 28'59" West 2654.18 feet to the Southwest Corner of the Said SW/4 and the Point of Beginning, containing 186.42 acres, more or less.

LINE DATA

L1	S	8	13'34"	E	124.65'
L2	S	2	43'44"	E	69.20'
L3	S	7	51'02"	W	62.48'
L4	S	21	38'23"	W	62.55'
L5	S	29	59'28"	W	205.21'
L6	S	4	19'05"	W	91.66'
L7	S	16	10'40"	E	85.30'
L8	S	3	25'48"	W	47.43'
L9	S	19	23'56"	W	82.93'
L10	S	12	40'38"	W	171.08'
L11	S	19	47'15"	W	222.82'
L12	S	6	42'21"	W	70.58'
L13	S	00	37'58"	E	259.16'
L14	S	12	17'44"	W	56.52'
L15	S	25	59'02"	W	69.82'
L16	S	15	26'12"	W	46.95'
L17	S	00	57'54"	E	47.46'
L18	S	25	19'36"	E	69.13'
L19	S	40	56'09"	E	65.29'
L20	S	46	53'01"	E	83.56'
L21	S	2	19'04"	W	53.15'
L22	S	22	19'06"	W	101.52'
L23	S	12	34'44"	W	75.79'
L24	S	3	11'52"	W	269.57'
L25	S	00	26'59"	W	53.97'
L26	S	7	30'10"	E	76.24'
L27	S	10	54'54"	E	73.80'
L28	S	16	10'27"	E	71.45'
L29	S	22	13'13"	E	86.87'