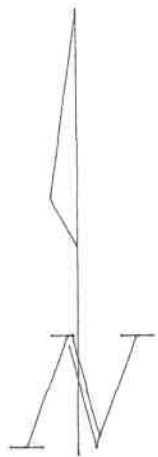


# SURVEY PLAT

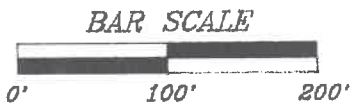
See the attached page for the legal description and line data.



Brass cap  
mon. NE  
Corner Sec.  
13, T8S,  
R8W



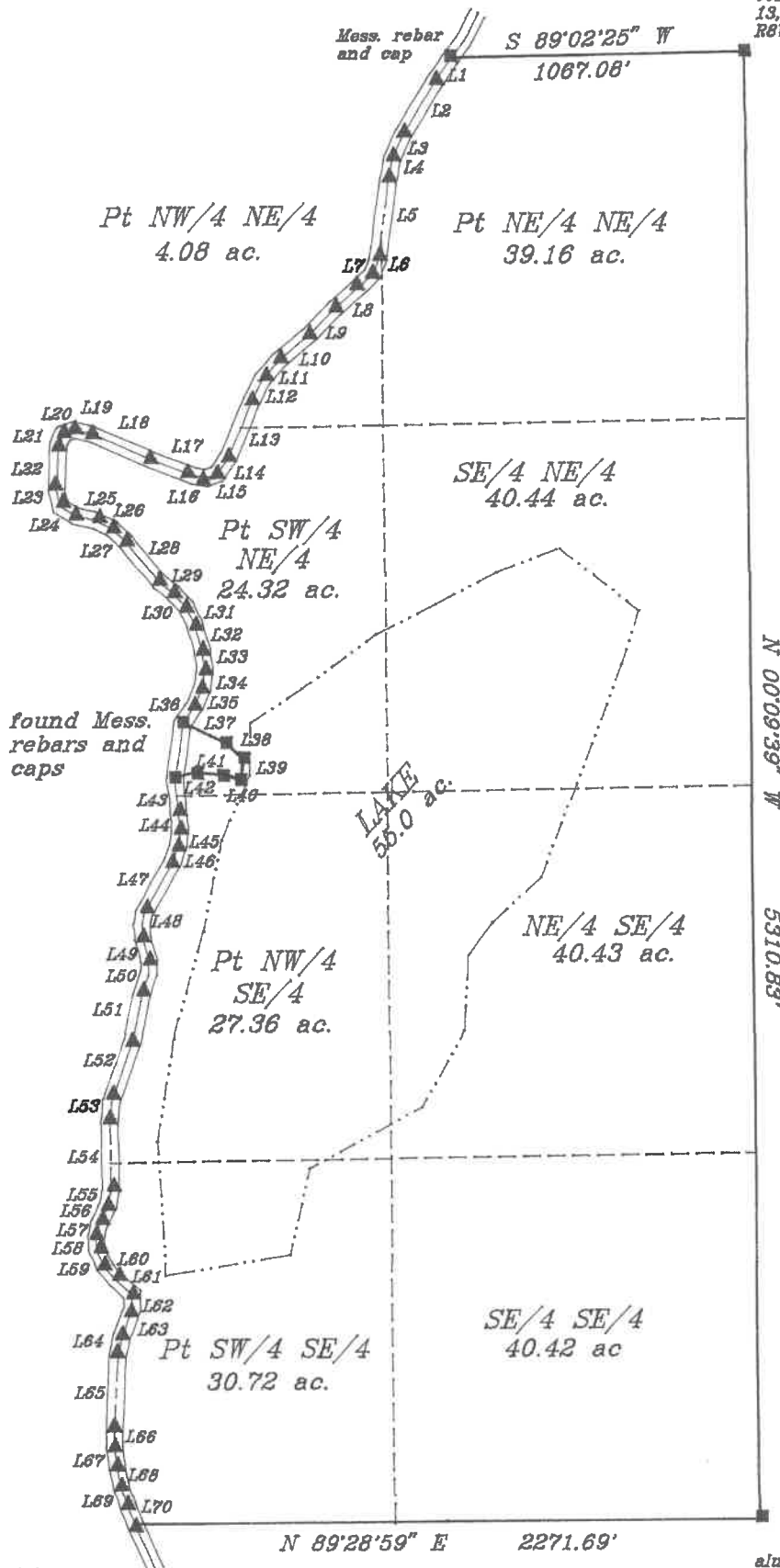
Solar Observation.



**LEGEND**

- Monument set
- Monument found
- Calculated corner

NOTE: All monuments set are 1/2" rebars and caps.



N 00°09'39" W  
5310.63'

alum. cap mon.  
SE Corner Sec  
13, T8S, R8W

Scale 1" = 500'	<b>WYNN SURVEYING INC.</b>	
Date Oct. 10, 2022	326 Friendship Cir. Star City, AR 71667 (870)-628-4568	
Drawn By Clay Wynn	Certified by: Robert C. Wynn, Lincoln County Surveyor, PLS 1033	
Drawing Number 40-1212H	Brief Legal Part of the E/2 of Sec. 13, T8S, R8W, Lincoln Co. Ar. lying East of a gravel Road.	
Prepared For Fratesi	500-08S-08W-0-13-102-40-1033	

LEGAL (40-1212H): Beginning at the Northeast Corner of Section 13, Township 8 South, Range 8 West, Lincoln County, Arkansas, running thence South 89 degrees 02'25" West along the North line of Said Section 1067.08 feet to the center of a gravel road; thence the following calls along the center of Said road South 35 degrees 14'02" West 97.72 feet; thence South 32 degrees 30'16" West 221.65 feet; thence South 24 degrees 42'07" West 99.21 feet; thence South 11 degrees 06'19" West 77.63 feet; thence South 8 degrees 06'35" West 302.55 feet; thence South 24 degrees 07'20" West 50.13 feet; thence South 45 degrees 42'28" West 54.51 feet; thence South 49 degrees 31'25" West 125.70 feet; thence South 44 degrees 15'40" West 137.88 feet; thence South 50 degrees 02'46" West 135.29 feet; thence South 42 degrees 10'14" West 93.15 feet; thence South 27 degrees 21'08" West 90.48 feet; thence South 22 degrees 48'59" West 225.73 feet; thence South 34 degrees 06'27" West 74.86 feet; thence South 70 degrees 49'02" West 41.29 feet; thence North 79 degrees 50'13" West 49.38 feet; thence North 68 degrees 41'17" West 170.02 feet; thence North 65 degrees 51'55" West 229.72 feet; thence North 74 degrees 14'14" West 65.10 feet; thence South 71 degrees 09'49" West 42.33 feet; thence South 25 degrees 23'33" West 42.06 feet; thence South 3 degrees 38'34" West 165.23 feet; thence South 12 degrees 55'21" East 64.38 feet; thence South 57 degrees 20'10" East 65.21 feet; thence South 76 degrees 40'30" East 75.97 feet; thence South 63 degrees 23'14" East 68.38 feet; thence South 46 degrees 05'02" East 68.50 feet; thence South 38 degrees 54'55" East 184.67 feet; thence South 51 degrees 17'33" East 69.48 feet; thence South 42 degrees 23'55" East 67.98 feet; thence South 25 degrees 37'58" East 67.79 feet; thence South 16 degrees 11'43" East 100.88 feet; thence South 7 degrees 51'05" East 70.59 feet; thence South 11 degrees 18'05" West 67.38 feet; thence South 24 degrees 45'57" West 67.93 feet; thence South 35 degrees 14'04" West 72.10 feet; thence South 64 degrees 10'06 East leaving road 173.67 feet; thence South 41 degrees 57'52" East 85.96 feet; thence South 3 degrees 04'44" West 72.88 feet; thence North 80 degrees 13'23" West 177.20 feet; thence South 74 degrees 14'02" West 69.21 feet to the center of Said road; thence the following calls along the center of Said road South 8 degrees 13'34" East 124.65 feet; thence South 2 degrees 43'44" East 69.20 feet; thence South 7 degrees 51'02" West 62.48 feet; thence South 21 degrees 38'23" West 62.55 feet; thence South 29 degrees 59'28" West 205.21 feet; thence South 4 degrees 19'05" West 91.66 feet; thence South 16 degrees 10'40" East 85.30 feet; thence South 3 degrees 25'48" West 47.43 feet; thence South 19 degrees 23'56" West 82.93 feet; thence South 12 degrees 40'38" West 171.08 feet; thence South 19 degrees 47'15" West 222.82 feet; thence South 6 degrees 42'21" West 70.58 feet; thence South 00 degrees 37'58" East 259.16 feet; thence South 12 degrees 17'44 West 56.52 feet; thence South 25 degrees 59'02" West 69.82 feet; thence South 15 degrees 26'12" West 46.95 feet; thence South 00 degrees 57'54" East 47.46 feet; thence South 25 degrees 10'36" East 69.13 feet; thence South 40 degrees 56'09" East 65.29 feet; thence South 46 degrees 53'01" East 83.56 feet; thence South 2 degrees 19'04" West 53.15 feet; thence South 22 degrees 19'06" West 101.52 feet; thence South 12 degrees 34'44"

West 75.79 feet; thence South 3 degrees 11'52" West 269.57 feet; thence South 00 degrees 26'59" West 53.97 feet; thence South 7 degrees 30'10" East 76.24 feet; thence South 10 degrees 54'54" East 73.80 feet; thence South 16 degrees 10'27" East 71.45 feet; thence South 22 degrees 13'13" East 86.87 feet to the South line of the Southwest Quarter (SW/4) of the Southeast Quarter (SE/4); thence North 89 degrees 28'59" East 2271.69 feet to the Southeast Corner of the Said SE/4; thence North 00 degrees 09'39" West 5310.83 feet to the Northeast Corner of the Said Section 13 and the Point of Beginning, containing 246.93 acres, more or less.

LINE DATA (40-1212H)

L1	S	35	14'02"	W	97.72'
L2	S	32	30'16"	W	221.65'
L3	S	24	42'07"	W	99.21'
L4	S	11	06'19"	W	77.63'
L5	S	8	06'35"	W	302.55'
L6	S	24	07'20"	W	50.13'
L7	S	45	42'28"	W	54.51'
L8	S	49	31'25"	W	125.70'
L9	S	44	15'40"	W	137.88'
L10	S	50	02'46"	W	135.29'
L11	S	42	10'14"	W	93.15'
L12	S	27	21'08"	W	90.48'
L13	S	22	48'59"	W	225.73'
L14	S	34	06'27"	W	74.86'
L15	S	70	49'02"	W	41.29'
L16	N	79	50'13"	W	49.38'
L17	N	68	41'17"	W	170.02'
L18	N	65	51'55"	W	229.72'
L19	N	74	14'14"	W	65.10'
L20	S	71	09'49"	W	42.33'
L21	S	25	23'33"	W	42.06'
L22	S	3	38'34"	W	165.23'
L23	S	12	55'21"	E	64.38'
L24	S	57	20'10"	E	65.21'
L25	S	76	40'30"	E	75.97'
L26	S	63	23'14"	E	68.38'
L27	S	46	05'02"	E	68.50'
L28	S	38	54'55"	E	184.67'
L29	S	51	17'33"	E	69.48'
L30	S	42	23'55"	E	67.98'
L31	S	25	37'58"	E	67.79'
L32	S	16	11'43"	E	100.88'
L33	S	7	51'05"	E	70.59'
L34	S	11	18'05"	W	67.38'
L35	S	24	45'57"	W	67.93'
L36	S	35	14'04"	W	72.10'
L37	S	64	10'06"	E	173.67'
L38	S	41	57'52"	E	85.96'
L39	S	3	04'44"	W	72.88'
L40	N	80	13'23"	W	177.20'
L41	S	74	14'02"	W	69.21'
L42	S	8	13'34"	E	124.65'
L43	S	2	43'44"	E	69.20'
L44	S	7	51'02"	W	62.48'
L45	S	21	38'23"	W	62.55'
L46	S	29	59'28"	W	205.21'
L47	S	4	19'05"	W	91.66'
L48	S	16	10'40"	E	85.30'
L49	S	3	25'48"	W	47.43'
L50	S	19	23'56"	W	82.93'
L51	S	12	40'38"	W	171.08'
L52	S	19	47'15"	W	222.82'

L53	S	6	42'21"	W	70.58'
L54	S	00	37'58"	E	259.16'
L55	S	12	17'44"	W	56.52'
L56	S	25	59'02"	W	69.82'
L57	S	15	26'12"	W	46.95'
L58	S	00	57'54"	E	47.46'
L59	S	25	19'36"	E	69.13'
L60	S	40	56'09"	E	65.29'
L61	S	46	53'01"	E	83.56'
L62	S	2	19'04"	W	53.15'
L63	S	22	19'06"	W	101.52'
L64	S	12	34'44"	W	75.79'
L65	S	3	11'52"	W	269.57'
L66	S	00	26'59"	W	53.97'
L67	S	7	30'10"	E	76.24'
L68	S	10	54'54"	E	73.80'
L69	S	16	10'27"	E	71.45'
L70	S	22	13'13"	E	86.87'

---