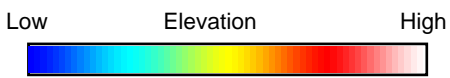
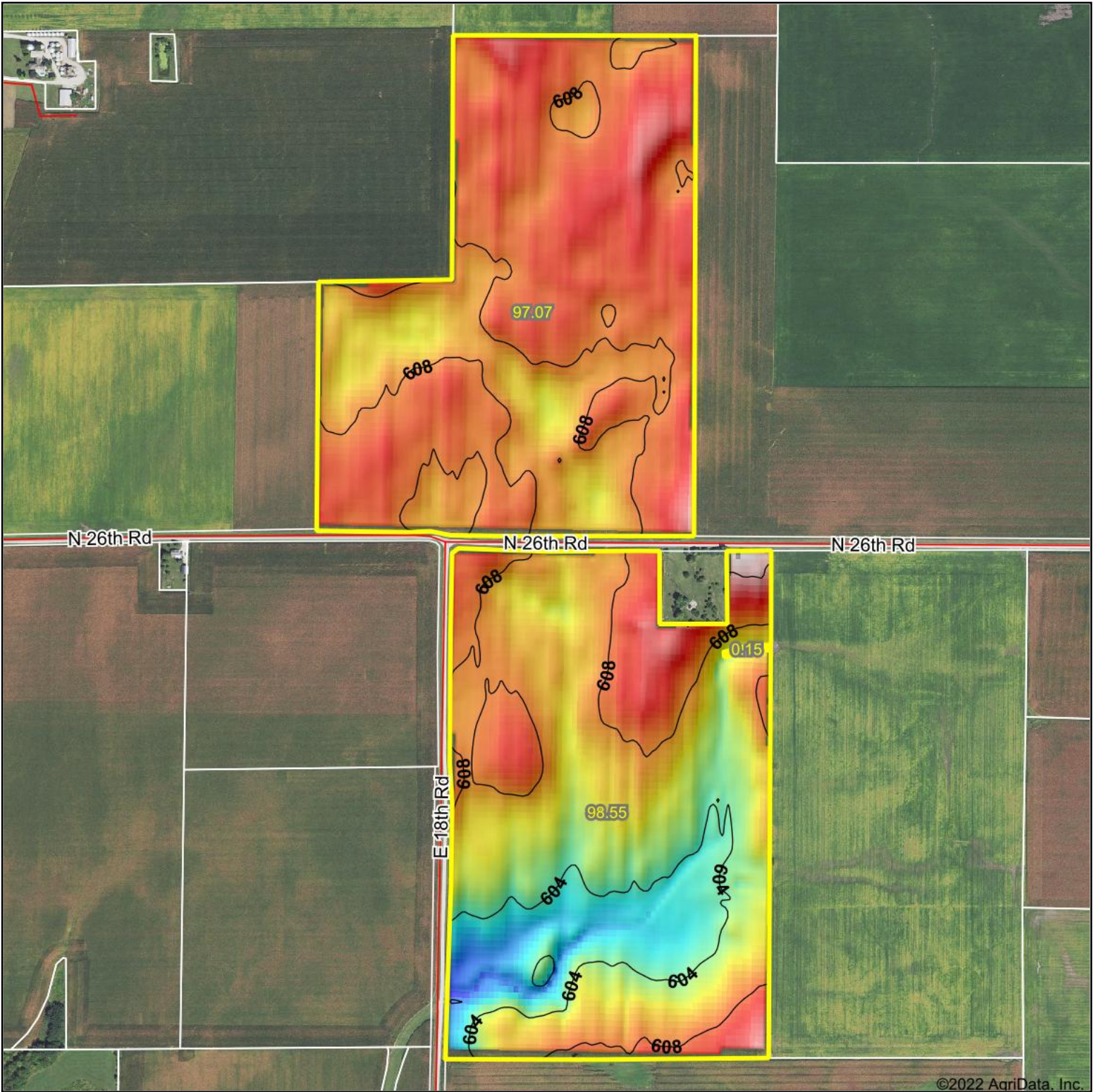
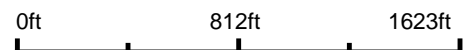


Topography Hillshade



Source: USGS 10 meter dem
 Interval(ft): 4
 Min: 599.7
 Max: 612.7
 Range: 13.0
 Average: 607.2
 Standard Deviation: 2 ft



10/19/2022

19-33N-4E
LaSalle County
Illinois

map center: 41° 18' 36.85, -88° 48' 55.4



© AgriData, Inc. 2021 www.AgriDataInc.com

Field borders provided by Farm Service Agency as of 5/21/2008.