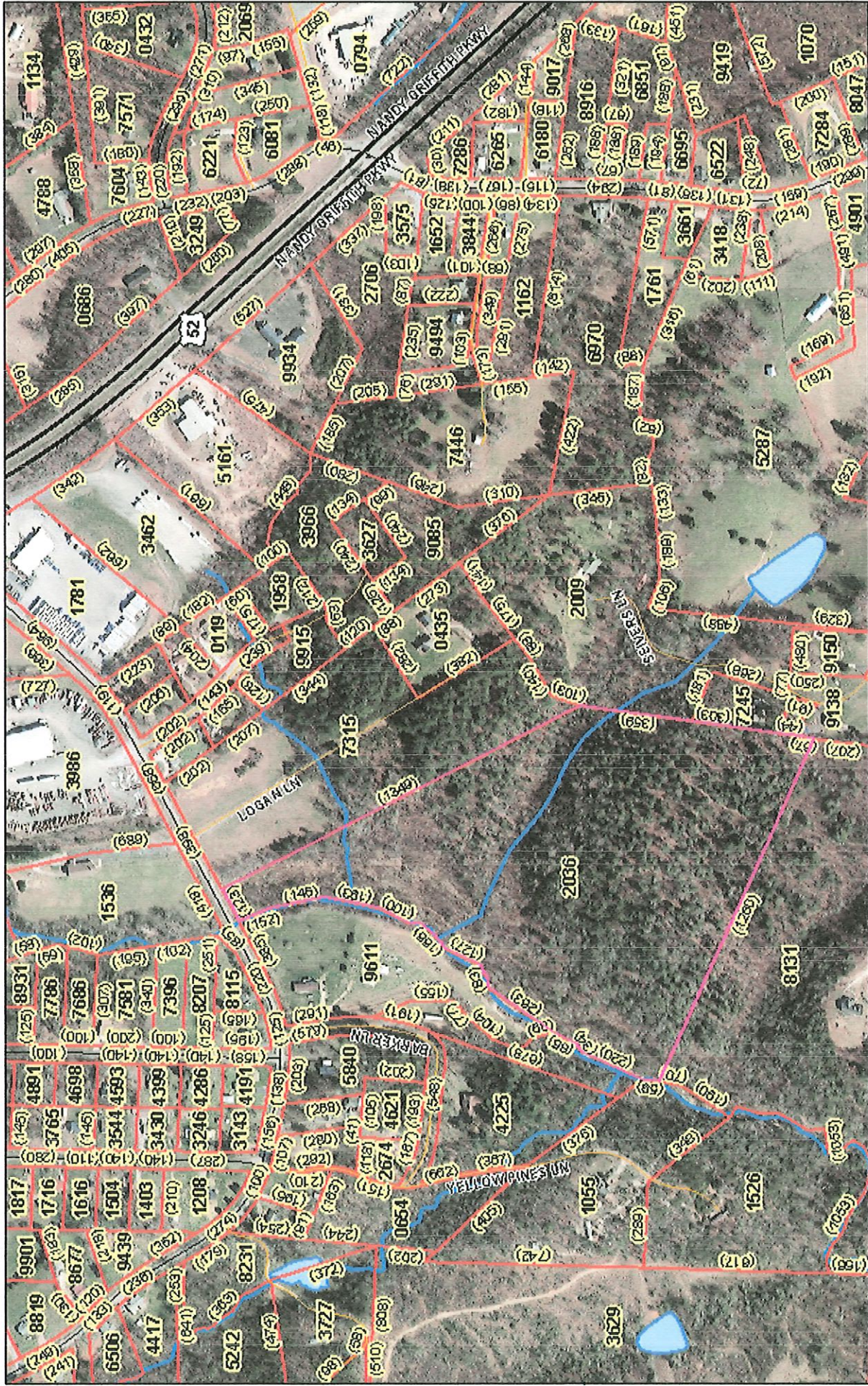


# Surry County



October 2, 2022

**ROAD**

- AIRPORTS
- MUNICIPAL STREET
- INTERSTATE HWY
- PRIVATE DRIVE
- NC HWY
- US HWY
- CONNECTOR
- STATE ROAD
- HWY LABELS

**ADJACENT COUNTIES**

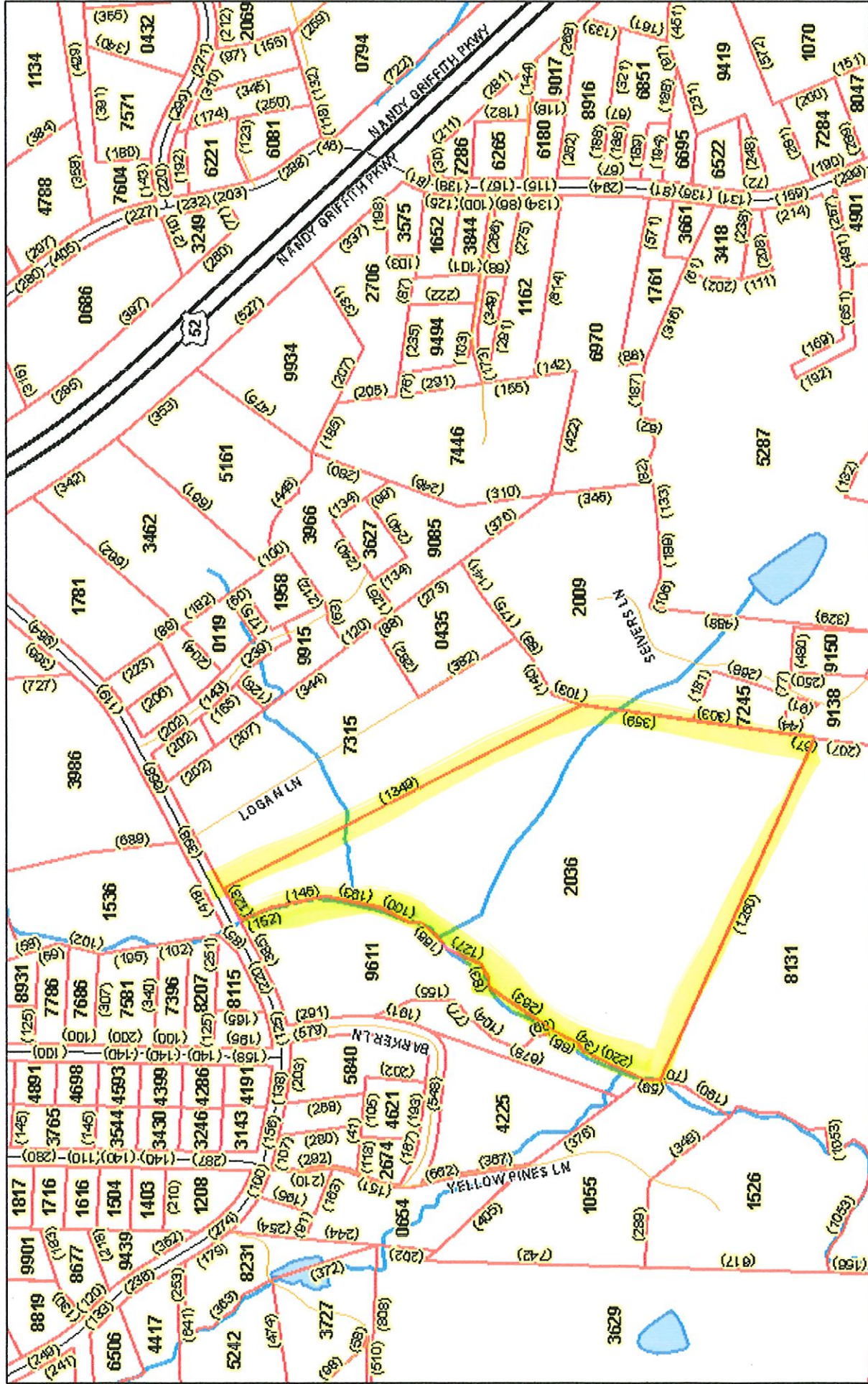
- MUNICIPALITIES

1:5,560

0 0.0475 0.095 0.15 0.19 mi

0 0.075 0.15 0.3 km

# Surry County



October 2, 2022

1:5,560

0 0.0475 0.095 0.19 mi

0 0.075 0.15 0.3 km

**ROAD**

- AIRPORTS
- INTERSTATE HWY
- MUNICIPAL STREET
- NC HWY
- PRIVATE DRIVE
- STATE ROAD
- US HWY
- CONNECTOR
- HWY LABELS

**ADJACENT COUNTIES**

- MUNICIPALITIES

NOTE: THIS MAP IS THE PROPERTY OF ROBERT E. REIF SURVEYING AND MAPPING COMPANY. IT IS NOT TO BE REPRODUCED OR TRANSMITTED IN ANY FORM OR BY ANY MEANS, ELECTRONIC OR MECHANICAL, INCLUDING PHOTOCOPYING, RECORDING, OR BY ANY INFORMATION STORAGE AND RETRIEVAL SYSTEM, WITHOUT PERMISSION IN WRITING FROM ROBERT E. REIF SURVEYING AND MAPPING COMPANY.

LEGEND  
PP - PLAT POINT  
SP - SURVEY POINT  
STAKE - STAKE  
MONUMENT - MONUMENT  
POINT - POINT  
LINE - LINE

NOTE: THIS SURVEY IS CONDUCTED IN ACCORDANCE WITH THE SURVEYING AND MAPPING ACT OF 1998. THE SURVEYOR HAS ESTABLISHED THE CORNER POINTS AND HAS ESTABLISHED THE MONUMENTS. THE SURVEYOR HAS ESTABLISHED THE CORNER POINTS AND HAS ESTABLISHED THE MONUMENTS. THE SURVEYOR HAS ESTABLISHED THE CORNER POINTS AND HAS ESTABLISHED THE MONUMENTS.

PLAT BOOK 8  
PAGE 86  
CONTAINING 0.17 ACRE

MICHAEL D. CHANDLER  
SEE R. STEVE HATT SURVEY FOR  
ROBERT L. HALL JR.  
DATED: JULY 21, 1987

SEE ROBERT E. REIF SURVEY FOR  
ROBERT L. HALL JR.  
DATED: FEB. 10, 1990  
PLAT NO. D-1180

SEE TABLE FOR CALLS  
FOR BRUSHY FORK CREEK

SEE TABLE FOR CALLS  
FOR BRUSHY FORK CREEK

SEE TABLE FOR CALLS  
FOR BRUSHY FORK CREEK

SEE TABLE FOR CALLS  
FOR BRUSHY FORK CREEK

SEE TABLE FOR CALLS  
FOR BRUSHY FORK CREEK

SEE TABLE FOR CALLS  
FOR BRUSHY FORK CREEK

SEE TABLE FOR CALLS  
FOR BRUSHY FORK CREEK

SEE TABLE FOR CALLS  
FOR BRUSHY FORK CREEK

SEE TABLE FOR CALLS  
FOR BRUSHY FORK CREEK

SEE TABLE FOR CALLS  
FOR BRUSHY FORK CREEK

SEE TABLE FOR CALLS  
FOR BRUSHY FORK CREEK

SEE TABLE FOR CALLS  
FOR BRUSHY FORK CREEK

SEE TABLE FOR CALLS  
FOR BRUSHY FORK CREEK

SEE TABLE FOR CALLS  
FOR BRUSHY FORK CREEK

SEE TABLE FOR CALLS  
FOR BRUSHY FORK CREEK

SEE TABLE FOR CALLS  
FOR BRUSHY FORK CREEK

SEE TABLE FOR CALLS  
FOR BRUSHY FORK CREEK

SEE TABLE FOR CALLS  
FOR BRUSHY FORK CREEK

SEE TABLE FOR CALLS  
FOR BRUSHY FORK CREEK

SEE TABLE FOR CALLS  
FOR BRUSHY FORK CREEK

SEE TABLE FOR CALLS  
FOR BRUSHY FORK CREEK

SEE TABLE FOR CALLS  
FOR BRUSHY FORK CREEK

SEE TABLE FOR CALLS  
FOR BRUSHY FORK CREEK

SEE TABLE FOR CALLS  
FOR BRUSHY FORK CREEK

State of North Carolina  
County of Surry

Filed for registration at 9:25 a.m. on the 19th day of July, 2002

and recorded in Plat Book 8, Page 86, Volume 19, of the Surveys of Surry County, North Carolina, by Robert E. Reif, Surveyor.

Robert E. Reif  
Surveyor

State of North Carolina  
County of Surry

Advised by the State of North Carolina that this map is not a warranty, endorsement, or approval of standard, quality, or value.

Advised by the State of North Carolina that this map is not a warranty, endorsement, or approval of standard, quality, or value.

Advised by the State of North Carolina that this map is not a warranty, endorsement, or approval of standard, quality, or value.

State of North Carolina  
County of Surry

Advised by the State of North Carolina that this map is not a warranty, endorsement, or approval of standard, quality, or value.

Advised by the State of North Carolina that this map is not a warranty, endorsement, or approval of standard, quality, or value.

Advised by the State of North Carolina that this map is not a warranty, endorsement, or approval of standard, quality, or value.

State of North Carolina  
County of Surry

Advised by the State of North Carolina that this map is not a warranty, endorsement, or approval of standard, quality, or value.

Advised by the State of North Carolina that this map is not a warranty, endorsement, or approval of standard, quality, or value.

Advised by the State of North Carolina that this map is not a warranty, endorsement, or approval of standard, quality, or value.

TABLE OF CALLS FOR GORE AREA  
BETWEEN BRANSON & GREENWOOD  
CONTAINING 0.99 ACRE

FROM - TO	DIRECTION	DISTANCE
AA TO AB	S 81°42'00" W	585.00'
AB TO AC	N 59°37'00" W	91.44'
AC TO AD	N 36°55'21" W	57.50'
AD TO AE	N 07°16'17" W	34.49'
AE TO AA	S 88°09'14" E	650.29'

TABLE OF CALLS FOR  
BRUSHY FORK  
CREEK

LINE	DIRECTION	DISTANCE
L1	S 21°37'00" E	34.00'
L2	S 21°37'00" E	34.00'
L3	S 21°37'00" E	34.00'
L4	S 21°37'00" E	34.00'
L5	S 21°37'00" E	34.00'
L6	S 21°37'00" E	34.00'
L7	S 21°37'00" E	34.00'
L8	S 21°37'00" E	34.00'
L9	S 21°37'00" E	34.00'
L10	S 21°37'00" E	34.00'
L11	S 21°37'00" E	34.00'
L12	S 21°37'00" E	34.00'
L13	S 21°37'00" E	34.00'
L14	S 21°37'00" E	34.00'
L15	S 21°37'00" E	34.00'
L16	S 21°37'00" E	34.00'
L17	S 21°37'00" E	34.00'
L18	S 21°37'00" E	34.00'
L19	S 21°37'00" E	34.00'
L20	S 21°37'00" E	34.00'
L21	S 21°37'00" E	34.00'
L22	S 21°37'00" E	34.00'
L23	S 21°37'00" E	34.00'
L24	S 21°37'00" E	34.00'
L25	S 21°37'00" E	34.00'
L26	S 21°37'00" E	34.00'
L27	S 21°37'00" E	34.00'
L28	S 21°37'00" E	34.00'
L29	S 21°37'00" E	34.00'
L30	S 21°37'00" E	34.00'
L31	S 21°37'00" E	34.00'
L32	S 21°37'00" E	34.00'
L33	S 21°37'00" E	34.00'
L34	S 21°37'00" E	34.00'
L35	S 21°37'00" E	34.00'

DB. 273, PG. 113

DB. 273, PG. 113

DB. 273, PG. 113

DB. 273, PG. 113

DB. 273, PG. 113

DB. 273, PG. 113

DB. 273, PG. 113

DB. 273, PG. 113

DB. 273, PG. 113

DB. 273, PG. 113

DB. 273, PG. 113

DB. 273, PG. 113

DB. 273, PG. 113

DB. 273, PG. 113

DB. 273, PG. 113

DB. 273, PG. 113

DB. 273, PG. 113

DB. 273, PG. 113

DB. 273, PG. 113

DB. 273, PG. 113

DB. 273, PG. 113

DB. 273, PG. 113

DB. 273, PG. 113

DB. 273, PG. 113

SR 1627

SR 1625

SR 1625

SR 1625

SR 1625

SR 1625

SR 1625

SR 1625

SR 1625

SR 1625

SR 1625

SR 1625

SR 1625

SR 1625

SR 1625

SR 1625

SR 1625

SR 1625

SR 1625

SR 1625

SR 1625

SR 1625

SR 1625

SR 1625

SR 1627

SR 1625

SR 1625

SR 1625

SR 1625

SR 1625

SR 1625

SR 1625

SR 1625

SR 1625

SR 1625

SR 1625

SR 1625

SR 1625

SR 1625

SR 1625

SR 1625

SR 1625

SR 1625

SR 1625

SR 1625

SR 1625

SR 1625

SR 1625

SR 1627

SR 1625

SR 1625

SR 1625

SR 1625

SR 1625

SR 1625

SR 1625

SR 1625

SR 1625

SR 1625

SR 1625

SR 1625

SR 1625

SR 1625

SR 1625

SR 1625

SR 1625

SR 1625

SR 1625

SR 1625

SR 1625

SR 1625

SR 1625

SR 1627

SR 1625

SR 1625

SR 1625

SR 1625

SR 1625

SR 1625

SR 1625

SR 1625

SR 1625

SR 1625

SR 1625

SR 1625

SR 1625

SR 1625

SR 1625

SR 1625

SR 1625

SR 1625

SR 1625

SR 1625

SR 1625

SR 1625

SR 1625

SR 1627

SR 1625

SR 1625

SR 1625

SR 1625

SR 1625

SR 1625

SR 1625

SR 1625

SR 1625

SR 1625

SR 1625

SR 1625

SR 1625

SR 1625

SR 1625

SR 1625

SR 1625

SR 1625

SR 1625

SR 1625

SR 1625

SR 1625

SR 1625

SR 1627

SR 1625

SR 1625

SR 1625

SR 1625

SR 1625

SR 1625

SR 1625

SR 1625

SR 1625

SR 1625

SR 1625

SR 1625

SR 1625

SR 1625

SR 1625

SR 1625

SR 1625

SR 1625

SR 1625

SR 1625

SR 1625

SR 1625

SR 1625

SR 1627

SR 1625

SR 1625

SR 1625

SR 1625

SR 1625

SR 1625

SR 1625

SR 1625

SR 1625

SR 1625

SR 1625

SR 1625

SR 1625

SR 1625

SR 1625

SR 1625

SR 1625

SR 1625

SR 1625

SR 1625

SR 1625

SR 1625</