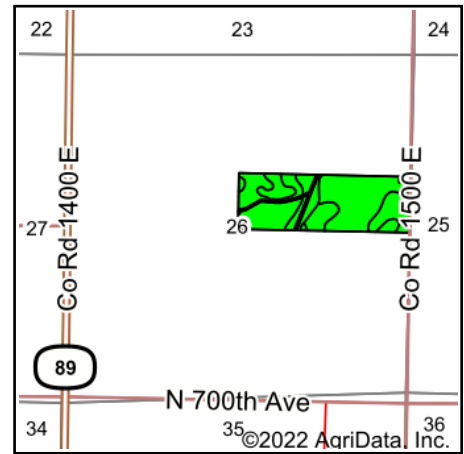
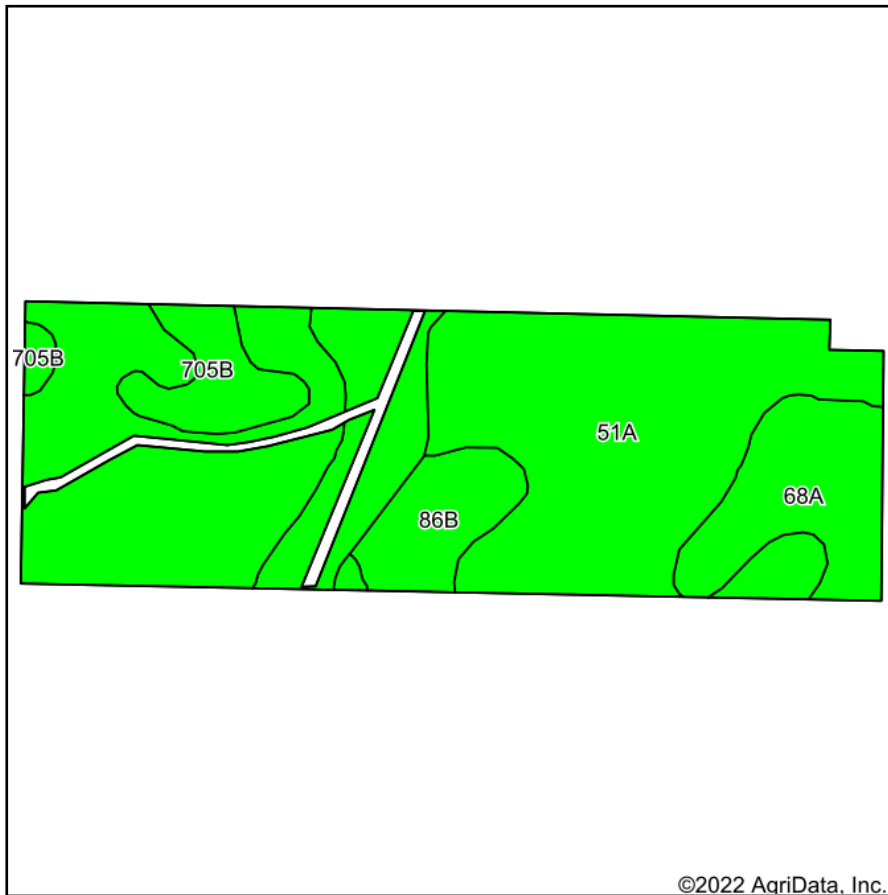


# Soils Map



State: **Illinois**  
 County: **Putnam**  
 Location: **26-32N-1W**  
 Township: **Granville**



Maps Provided By:



© AgriData, Inc. 2021

www.AgriDataInc.com



Area Symbol: IL155, Soil Area Version: 16

Code	Soil Description	Acres	Percent of field	Il. State Productivity Index Legend	Subsoil rooting <b>a</b>	Corn Bu/A	Soybeans Bu/A	Wheat Bu/A	Alfalfa <b>d</b> hay, T/A	Grass-legume <b>e</b> hay, T/A	Crop productivity index for optimum management
51A	Muscatune silt loam, 0 to 2 percent slopes	33.69	65.7%		FAV	200	64	75	0.00	6.02	147
68A	Sable silty clay loam, 0 to 2 percent slopes	10.72	20.9%		FAV	192	63	74	0.00	5.77	143
**86B	Osco silt loam, 2 to 5 percent slopes	3.47	6.8%		FAV	**189	**59	**74	**6.83	0.00	**140
**705B	Buckhart silt loam, 2 to 5 percent slopes	3.37	6.6%		FAV	**188	**60	**73	**7.33	0.00	**141
Weighted Average						196.8	63.2	74.6	0.94	5.16	145.3

**Table: Optimum Crop Productivity Ratings for Illinois Soil by K.R. Olson and J.M. Lang, Office of Research, ACES, University of Illinois at Champaign-Urbana.** Version: 1/2/2012 Amended Table S2 B811

Crop yields and productivity indices for optimum management (B811) are maintained at the following NRES web site: <http://soilproductivity.nres.illinois.edu/>

\*\* Indexes adjusted for slope and erosion according to Bulletin 811 Table S3

**a** UNF = unfavorable; FAV = favorable

**d** Soils in the poorly drained group were not rated for alfalfa and are shown with a zero "0".

**e** Soils in the well drained group were not rated for grass-legume and are shown with a zero "0".

Soils data provided by USDA and NRCS. Soils data provided by University of Illinois at Champaign-Urbana.