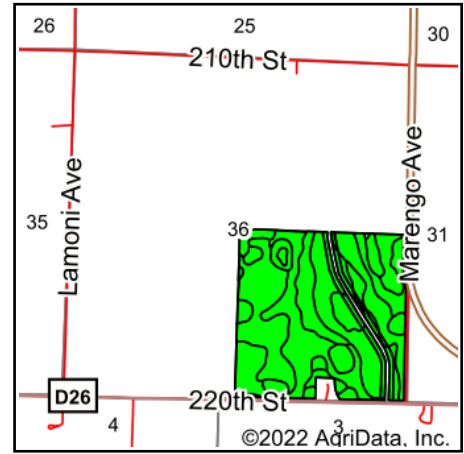
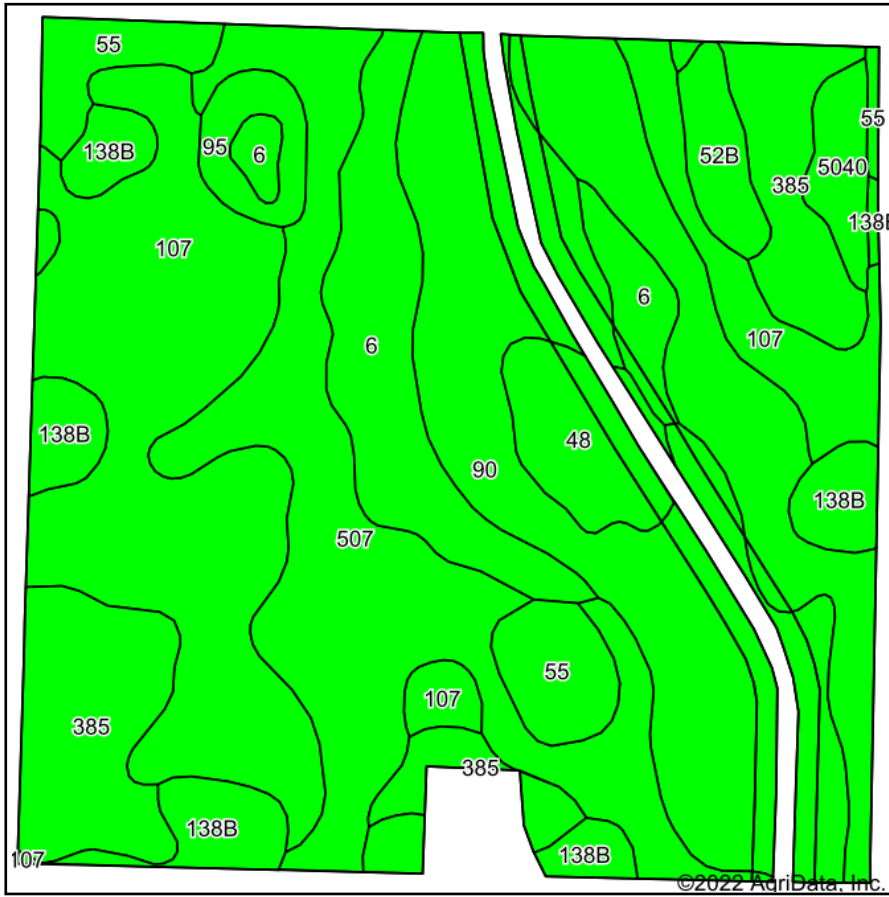


# Soils Map



State: **Iowa**  
 County: **Calhoun**  
 Location: **36-89N-33W**  
 Township: **Butler**  
 Acres: **145.14**  
 Date: **1/21/2022**



Maps Provided By:  
**surety**  
 CUSTOMIZED ONLINE MAPPING  
 © AgriData, Inc. 2021 www.AgriDataInc.com



Area Symbol: IA025, Soil Area Version: 31

Code	Soil Description	Acres	Percent of field	CSR2 Legend	Non-Irr Class *c	CSR2**	CSR
507	Canisteo clay loam, 0 to 2 percent slopes	35.18	24.2%		IIw	84	78
107	Webster clay loam, 0 to 2 percent slopes	31.44	21.7%		IIw	86	83
90	Okoboji mucky silt loam, 0 to 1 percent slope	25.42	17.5%		IIIw	55	59
385	Guckeen clay loam, 1 to 3 percent slopes	14.59	10.1%		IIw	76	
6	Okoboji silty clay loam, 0 to 1 percent slopes	12.31	8.5%		IIIw	59	57
138B	Clarion loam, 2 to 6 percent slopes	8.72	6.0%		Ile	89	80
55	Nicollet clay loam, 1 to 3 percent slopes	6.23	4.3%		Iw	89	88
48	Knoke mucky silty clay loam, 0 to 1 percent slopes	4.40	3.0%		IIIw	56	54
52B	Bode clay loam, 2 to 6 percent slopes	2.43	1.7%		Ile	91	78
95	Harps clay loam, 0 to 2 percent slopes	2.25	1.6%		IIw	72	62
5040	Orthents, loamy	2.17	1.5%			5	5
Weighted Average					2.22	74.8	*-

\*\*IA has updated the CSR values for each county to CSR2.

\*- CSR weighted average cannot be calculated on the current soils data, use prior data version for csr values.

\*c: Using Capabilities Class Dominant Condition Aggregation Method

Soils data provided by USDA and NRCS.

## FARM # 1 - SOIL MAP