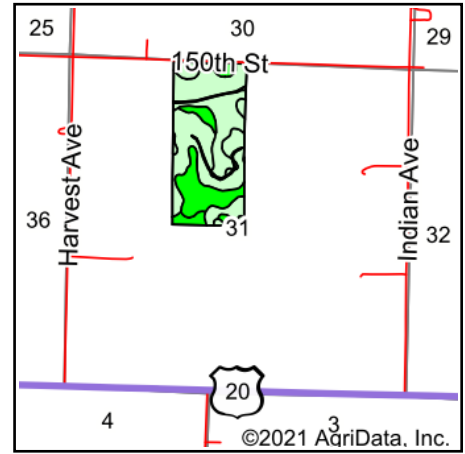
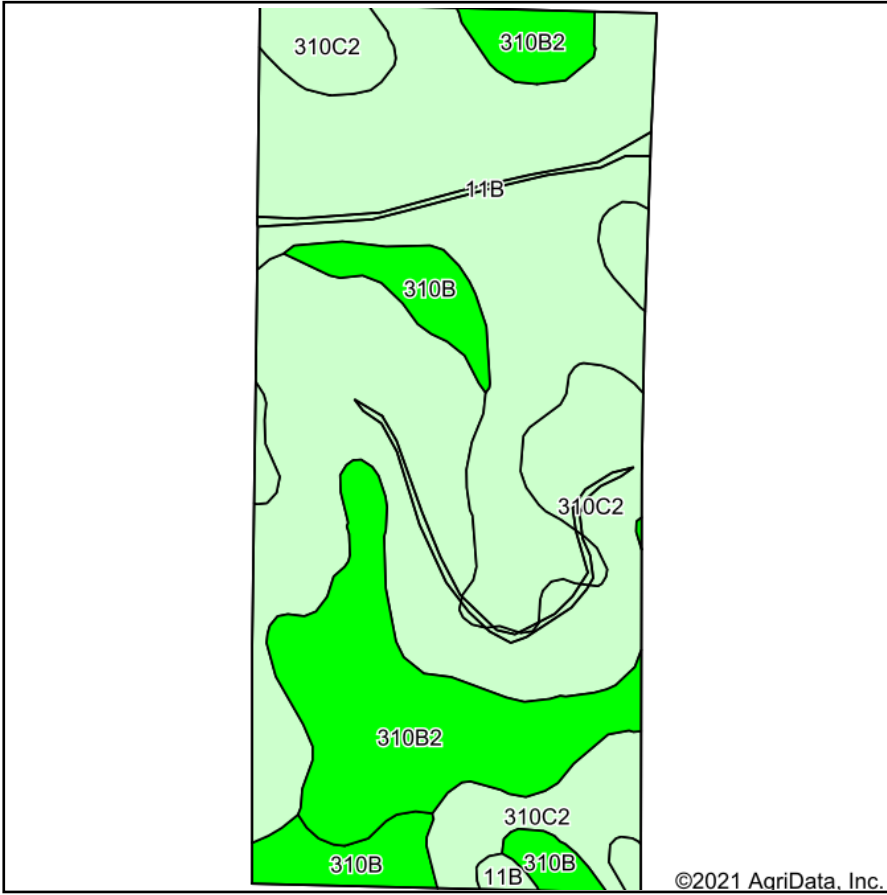


# Soils Map



State: **Iowa**  
 County: **Ida**  
 Location: **31-89N-39W**  
 Township: **Galva**  
 Acres: **69.22**  
 Date: **6/27/2021**



Maps Provided By:



© AgriData, Inc. 2021

www.AgriDataInc.com



Soils data provided by USDA and NRCS.

Area Symbol: IA093, Soil Area Version: 31

Code	Soil Description	Acres	Percent of field	CSR2 Legend	Non-Irr Class *c	CSR2**	CSR
310C2	Galva silty clay loam, 5 to 9 percent slopes, eroded	28.17	40.7%		IIIe	84	55
11B	Colo-Judson silty clay loams, 0 to 5 percent slopes, occasionally flooded	23.89	34.5%		IIw	80	62
310B2	Galva silty clay loam, 2 to 5 percent slopes, eroded	12.22	17.7%		Ile	90	71
310B	Galva silty clay loam, 2 to 5 percent slopes	4.94	7.1%		Ile	95	73
<b>Weighted Average</b>						<b>84.5</b>	<b>61.5</b>

\*\*IA has updated the CSR values for each county to CSR2.

\*c: Using Capabilities Class Dominant Condition Aggregation Method

Soils data provided by USDA and NRCS.