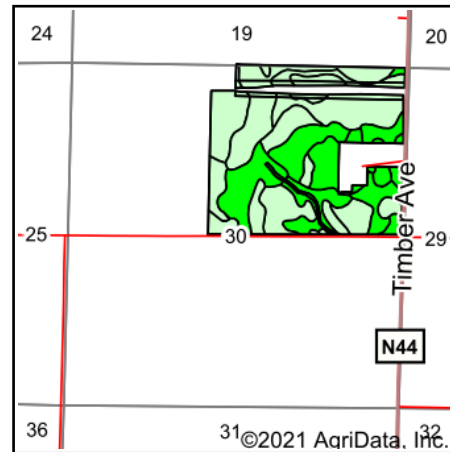
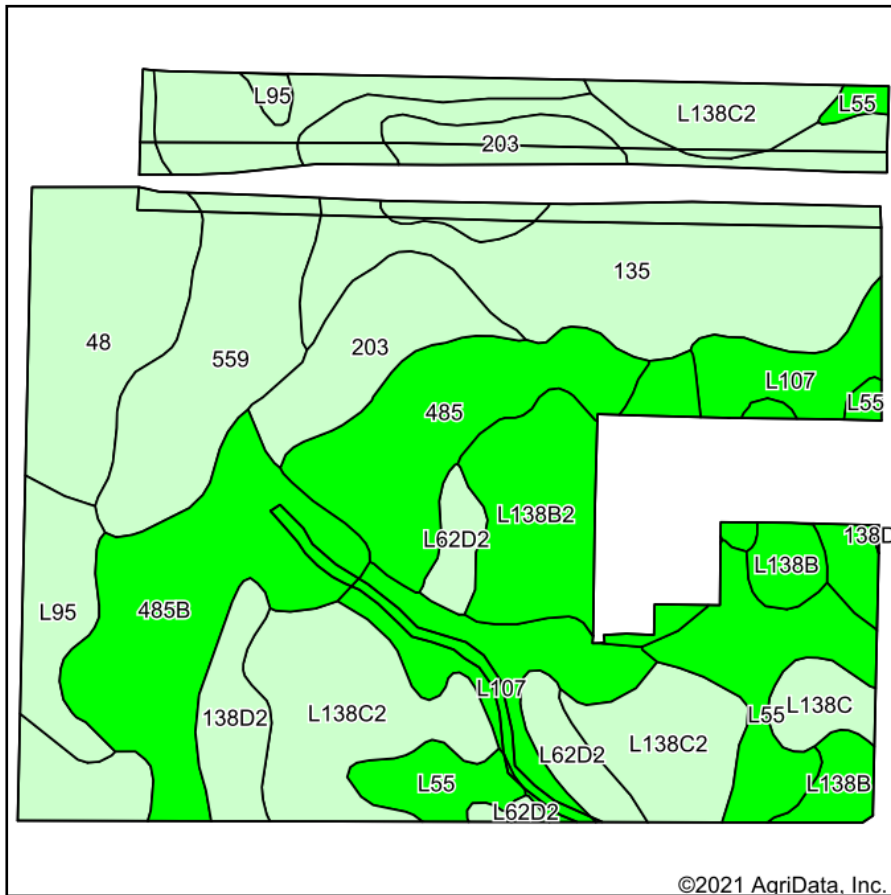


# Soils Map



State: **Iowa**  
 County: **Carroll**  
 Location: **30-83N-33W**  
 Township: **Richland**  
 Acres: **157.58**  
 Date: **5/11/2021**



Maps Provided By:



Soils data provided by USDA and NRCS.

©2021 AgriData, Inc.

© AgriData, Inc. 2021

www.AgriDataInc.com

Area Symbol: IA027, Soil Area Version: 25

Code	Soil Description	Acres	Percent of field	CSR2 Legend	Non-Irr Class *c	CSR2**	CSR
135	Coland clay loam, 0 to 2 percent slopes, occasionally flooded	22.94	14.6%		llw	76	78
L138C2	Clarion loam, Bemis moraine, 6 to 10 percent slopes, moderately eroded	18.68	11.9%		llle	83	
559	Talcot silty clay loam, 32 to 40 inches to sand and gravel, 0 to 2 percent slopes	16.64	10.6%		llw	54	70
48	Knoke mucky silty clay loam, 0 to 1 percent slopes	14.51	9.2%		lllw	56	59
485B	Spillville loam, 2 to 5 percent slopes	14.44	9.2%		lle	88	81
L107	Webster clay loam, Bemis moraine, 0 to 2 percent slopes	12.24	7.8%		llw	88	
485	Spillville loam, 0 to 2 percent slopes, occasionally flooded	10.72	6.8%		llw	88	86
203	Cylinder loam, 0 to 2 percent slopes	10.30	6.5%		lls	58	75
L55	Nicollet loam, 1 to 3 percent slopes	10.07	6.4%		le	91	
L138B2	Clarion loam, Bemis moraine, 2 to 6 percent slopes, moderately eroded	8.78	5.6%		lle	85	
L95	Harps clay loam, Bemis moraine, 0 to 2 percent slopes	5.15	3.3%		llw	75	
L62D2	Storden loam, Bemis moraine, 10 to 16 percent slopes, moderately eroded	3.96	2.5%		lVe	41	
138D2	Clarion loam, 9 to 14 percent slopes, moderately eroded	3.55	2.3%		llle	52	54
L138B	Clarion loam, Bemis moraine, 2 to 6 percent slopes	3.46	2.2%		lle	88	
L138C	Clarion loam, Bemis moraine, 6 to 10 percent slopes	2.14	1.4%		llle	84	
<b>Weighted Average</b>						<b>74.7</b>	<b>*.</b>

\*\*IA has updated the CSR values for each county to CSR2.

\*. CSR weighted average cannot be calculated on the current soils data, use prior data version for csr values.

\*c: Using Capabilities Class Dominant Condition Aggregation Method

Soils data provided by USDA and NRCS.

## Parcel # 1 - Cropland Soil Map