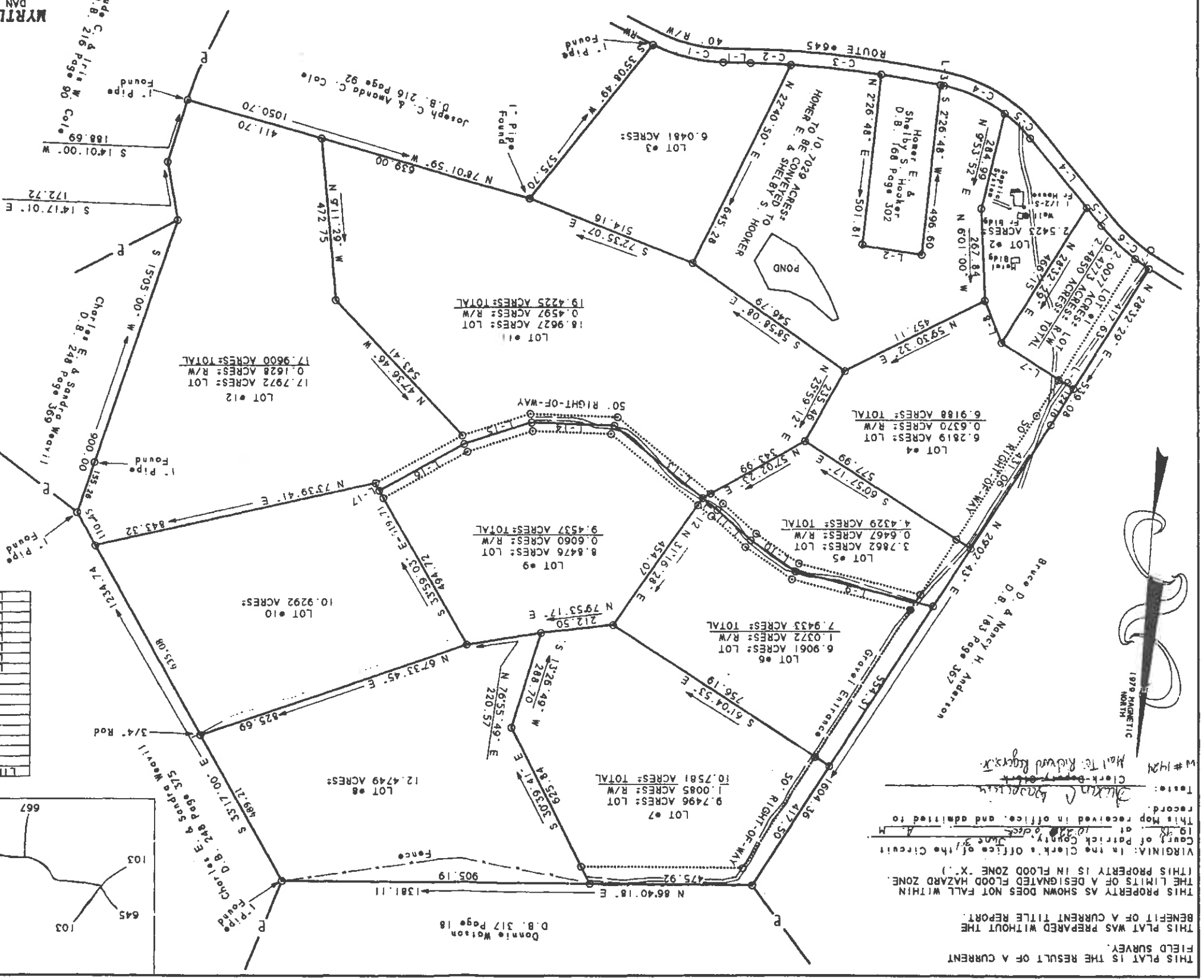
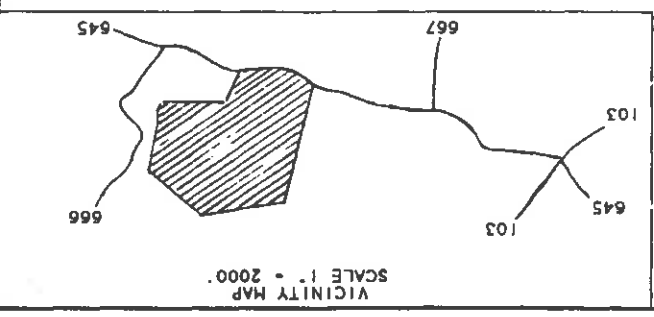


JOB # 1101

DEED REFERENCE  
DEED BOOK 69 PAGE 125  
WILL BOOK 19 PAGE 117  
JENNINGS L. BOLT LS  
MARCH 21, 1998  
SCALE 1" = 200'  
DAN RIVER MAGISTERIAL DISTRICT  
PATRICK COUNTY, VIRGINIA  
**MYRTLE C. HOOKER, ESTATE**



LINE NO.	DIRECTION	LENGTH
1	S 87°21'06" W	80.14
2	N 85°33'12" W	175.00
3	N 82°07'42" W	10.59
4	N 45°22'19" W	67.61
5	S 61°27'31" E	50.00
6	S 61°27'31" E	250.00
7	S 25°41'22" E	131.93
8	S 79°32'28" E	415.54
9	S 59°28'43" E	160.40
10	S 51°54'42" E	31.88
11	S 54°41'04" E	55.33
12	S 54°41'04" E	334.18
13	S 88°09'26" E	243.45
14	N 68°36'42" E	206.83
15	N 57°27'02" E	285.51
16	S 31°11'59" E	25.02



LOT	CURVE	RADIUS	LENGTH	TANGENT	CHORD	BEARING	DELTA
1	C-1	212.83	108.13	211.16	108.13	N 80°11'22" W	24°55'04"
2	C-2	119.99	60.00	119.99	60.00	N 88°27'46" W	2°13'18"
3	C-3	3094.26	267.55	3094.26	267.55	N 87°58'57" E	2°57'15"
4	C-4	445.53	196.46	445.53	196.46	N 88°27'46" W	2°13'18"
5	C-5	445.53	196.46	445.53	196.46	N 88°27'46" W	2°13'18"
6	C-6	610.99	138.85	610.99	138.85	N 88°27'46" W	2°13'18"
7	C-7	611.08	50.07	611.08	50.07	N 88°27'46" W	2°13'18"
8	C-8	445.53	196.46	445.53	196.46	N 88°27'46" W	2°13'18"
9	C-9	445.53	196.46	445.53	196.46	N 88°27'46" W	2°13'18"
10	C-10	445.53	196.46	445.53	196.46	N 88°27'46" W	2°13'18"
11	C-11	445.53	196.46	445.53	196.46	N 88°27'46" W	2°13'18"
12	C-12	445.53	196.46	445.53	196.46	N 88°27'46" W	2°13'18"
13	C-13	445.53	196.46	445.53	196.46	N 88°27'46" W	2°13'18"
14	C-14	445.53	196.46	445.53	196.46	N 88°27'46" W	2°13'18"
15	C-15	445.53	196.46	445.53	196.46	N 88°27'46" W	2°13'18"
16	C-16	445.53	196.46	445.53	196.46	N 88°27'46" W	2°13'18"
17	C-17	445.53	196.46	445.53	196.46	N 88°27'46" W	2°13'18"
18	C-18	445.53	196.46	445.53	196.46	N 88°27'46" W	2°13'18"
19	C-19	445.53	196.46	445.53	196.46	N 88°27'46" W	2°13'18"
20	C-20	445.53	196.46	445.53	196.46	N 88°27'46" W	2°13'18"
21	C-21	445.53	196.46	445.53	196.46	N 88°27'46" W	2°13'18"
22	C-22	445.53	196.46	445.53	196.46	N 88°27'46" W	2°13'18"
23	C-23	445.53	196.46	445.53	196.46	N 88°27'46" W	2°13'18"
24	C-24	445.53	196.46	445.53	196.46	N 88°27'46" W	2°13'18"
25	C-25	445.53	196.46	445.53	196.46	N 88°27'46" W	2°13'18"
26	C-26	445.53	196.46	445.53	196.46	N 88°27'46" W	2°13'18"
27	C-27	445.53	196.46	445.53	196.46	N 88°27'46" W	2°13'18"
28	C-28	445.53	196.46	445.53	196.46	N 88°27'46" W	2°13'18"
29	C-29	445.53	196.46	445.53	196.46	N 88°27'46" W	2°13'18"
30	C-30	445.53	196.46	445.53	196.46	N 88°27'46" W	2°13'18"
31	C-31	445.53	196.46	445.53	196.46	N 88°27'46" W	2°13'18"
32	C-32	445.53	196.46	445.53	196.46	N 88°27'46" W	2°13'18"
33	C-33	445.53	196.46	445.53	196.46	N 88°27'46" W	2°13'18"
34	C-34	445.53	196.46	445.53	196.46	N 88°27'46" W	2°13'18"
35	C-35	445.53	196.46	445.53	196.46	N 88°27'46" W	2°13'18"
36	C-36	445.53	196.46	445.53	196.46	N 88°27'46" W	2°13'18"
37	C-37	445.53	196.46	445.53	196.46	N 88°27'46" W	2°13'18"
38	C-38	445.53	196.46	445.53	196.46	N 88°27'46" W	2°13'18"
39	C-39	445.53	196.46	445.53	196.46	N 88°27'46" W	2°13'18"
40	C-40	445.53	196.46	445.53	196.46	N 88°27'46" W	2°13'18"
41	C-41	445.53	196.46	445.53	196.46	N 88°27'46" W	2°13'18"
42	C-42	445.53	196.46	445.53	196.46	N 88°27'46" W	2°13'18"
43	C-43	445.53	196.46	445.53	196.46	N 88°27'46" W	2°13'18"
44	C-44	445.53	196.46	445.53	196.46	N 88°27'46" W	2°13'18"
45	C-45	445.53	196.46	445.53	196.46	N 88°27'46" W	2°13'18"
46	C-46	445.53	196.46	445.53	196.46	N 88°27'46" W	2°13'18"
47	C-47	445.53	196.46	445.53	196.46	N 88°27'46" W	2°13'18"
48	C-48	445.53	196.46	445.53	196.46	N 88°27'46" W	2°13'18"
49	C-49	445.53	196.46	445.53	196.46	N 88°27'46" W	2°13'18"
50	C-50	445.53	196.46	445.53	196.46	N 88°27'46" W	2°13'18"

IRON ROD SET AT ALL LOT CORNERS AND ON ALL POINTS ON THE 50' RIGHT-OF-WAY.

THIS PLAT IS THE RESULT OF A CURRENT FIELD SURVEY.  
THIS PLAT WAS PREPARED WITHOUT THE BENEFIT OF A CURRENT TITLE REPORT.  
THIS PROPERTY AS SHOWN DOES NOT FALL WITHIN THE LIMITS OF A DESIGNATED FLOOD HAZARD ZONE. (THIS PROPERTY IS IN FLOOD ZONE "X.")  
VIRGINIA: In the Clerk's Office of the Circuit Court of Patrick County, this 31st day of 1998, at 10:00 o'clock A.M. This Map received in office, and admitted to record.  
Taxes: *Shelby S. Hooker*  
Map # 1424  
Made by: *Richard Rogers, Jr.*

