



SCV VALVE

Innovative Valve Solutions®

www.scvvalve.com

- THRU CONDUIT GATES - SLAB & EXPANDING
- FULL PORT SWING CHECKS
- 3-PIECE TRUNNION BALLS
- LUBRICATED PLUGS
- RISING STEM BALL VALVES
- FLOATING BALLS
- PISTON CHECKS
- WEDGE GATES



About Us

SCV Valve was established in 2005. Since that time, SCV has continued to expand our product offerings to cover a broad range of applications and industries. Some of the markets we serve include power, petrochemical, crude oil, natural gas, and geothermal.

SCV Valve takes the utmost pride in our ability to manufacture both commodity and specialty valves that meet and exceed the needs of our customers. All sizes, pressure classes, and metallurgical compositions are managed in house; utilizing the strictest quality control measures to ensure the customer's total satisfaction.

On behalf of all of the members at SCV Valve, we thank you for the opportunity to earn your business.



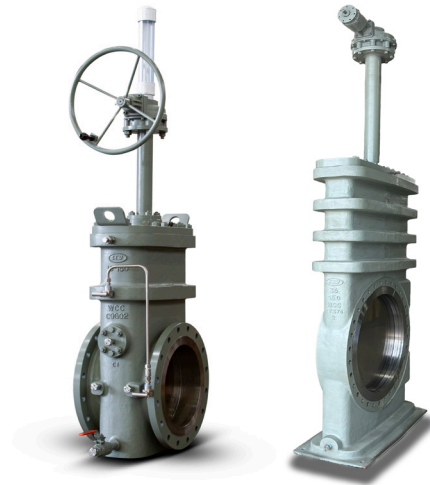
SANTA FE, TEXAS
Sales, Projects, Engineering,
Manufacturing & Warehousing

3521 FM 646 Rd. North
Santa Fe, TX 77510
Phone: (281) 482-4728
Fax: (281) 482-9728

New Products at SCV

Compact Slab and Expanding Gate Valves

Design: API 6D*
Sizes: 12" - 48"
Class: 150



Rising Stem Ball Valves

Design: API 6D*
Sizes: 2" - 18"
Class: 150 - 2500



*Certain class 150 & 300 to
manufacture standard end to
end.

End-User Approvals

SCV is continuously pursuing key end user approvals. Attached are a few end user approvals our company has achieved.

End-User Approvals

- Ameren
- APA
- Baltimore Gas & Electric
- Boardwalk Pipeline
- Buckeye Partners
- Cal Energy
- California Resource Corporation
- Calpine
- Canadian Natural Resources
- Cenovus
- Centurion Pipeline
- Central Hudson Gas & Electric Corp
- Chevron
- Colonial Pipeline
- COSO Operating
- Cymq Energy- Hudson Ranch
- Delek Logistics
- Delmarva Power
- Denbury Resources
- Easton Energy
- Ecopetrol
- Enbridge
- Enterprise Products
- EQT Midstream
- Eureka
- EP Energy
- Explorer Pipeline
- GE Oil & Gas
- Howard Energy
- Hudson Ranch Energy Services
- Ironhorse Midstream
- Jefferson Energy
- Keyera Energy
- Kinder Morgan Nat Gas & CO2
- Louisville Gas & Electric
- Marathon Pipeline
- Momentum Midstream
- NewJersey Natural Resources
- NextEra
- Oneok
- OXY
- PECO Energy
- Phillips 66
- Philadelphia Gas Works
- Plains All American
- Producers Midstream
- Rangeland Energy
- Repsol
- Sable Offshore
- Saipem
- Salt Creek Midstream
- Sandridge Energy
- Senex Energy
- Shell Canada
- Tallgrass Energy
- Targa Resources
- TC Energy
- UGI
- Washington Gas
- Williams Energy

Ready-to-Ship Inventory

SCV maintains a large inventory for the midstream and industrial sectors to support customer with short lead time requirements.

API 6D PRODUCTS

- Thru Conduit Gate Valves
- Trunnion Mounted Ball Valves
- Full Port Swing Check Valves
- Piston Check Valves
- Lubricated Plug Valves
- Rising Stem Ball Valves

API 6D Products: ANSI pressure classes range from 150# to 2500#.



SCV maintains a limited inventory of API 6A, API 600, & API 623 products, however, all sizes and pressure classes are available with manufacturing lead time.

API 6A PRODUCTS

- Thru Conduit Gate Valves
- Trunnion Mounted Ball Valves

API 6A Products: ANSI pressure classes range from 2000# to 10,000#.

API 600 PRODUCTS

- Wedge Gate Valves

API 600 Products: ANSI pressure classes range from 150# to 2500#

API 6D PRODUCTS

- Floating Ball Valves

API 623 PRODUCTS

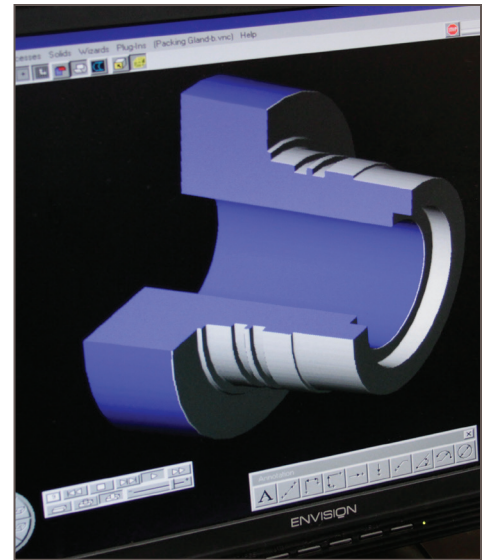
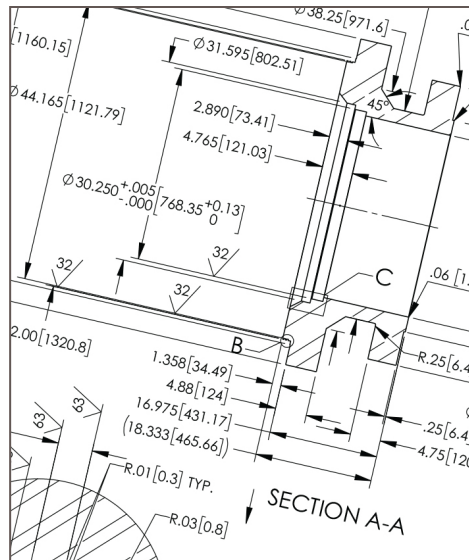
- Globe Valves

API 623 Products: ANSI pressure classes range from 150# to 2500#.



Engineering

Engineering – All API 6A & API 6D valves are manufactured to proprietary SCV engineering drawings with design calculations performed by a third party PE.



Non-Destructive Examination

SCV is committed to manufacturing valves of the highest quality which is why each order for API 6D cast body valves is qualified with our rigorous NDE protocol.



Automation

SCV can mount, set stops, and function test electric, pneumatic, or hydraulic actuators on any of our quarter turn or linear isolation valves. We are actuation brand neutral. All SCV quarter turn and linear isolation valves come standard with an ISO mounting plate.



PRODUCT LINES

THRU CONDUIT GATES - SLAB & EXPANDING

Design: API 6D
Sizes: 2" - 42"
Class: 150 - 1500

Design: API 6A
Sizes: 9", 11" & 13-5/8"
Pressure: 2000, 3000, 5000



3-PIECE TRUNNION BALLS

Design: API 6D
Sizes: 2" - 42"
Class: 150 - 2500

Design: API 6A
Sizes: 2-1/16" - 7-1/6"
Pressure: 2000, 3000, 5000

BoreCoating:Scotchkote™134



PISTON CHECKS

Design: API 6D
Sizes: 2" - 24"
Class: 150 - 2500



FULL PORT SWING CHECKS

Design: API 6D
Sizes: 2" - 36"
Class: 150 - 2500

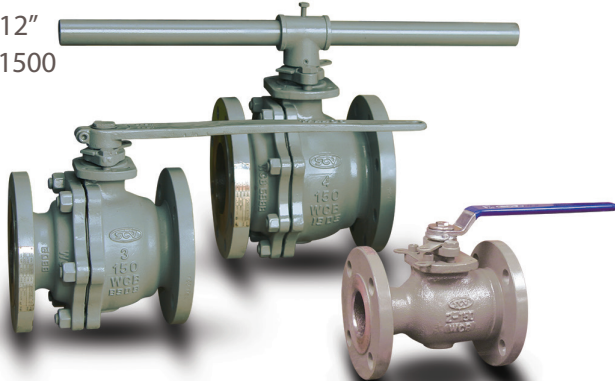


FLOATING BALLS

Design: B16.34

Sizes: 1/2" - 12"

Class: 150 - 1500



LUBRICATED PLUGS

Design: API 6D

Sizes: 1/2" - 30"

Class: 150 - 2500



Rising Stem Ball Valves

Design: API 6D*

Sizes: 2" - 18"

Class: 150 - 2500



WEDGE GATES

Design: API 600

Sizes: 2" - 48"

Class: 150 - 2500



GEOTHERMAL VALVES

THRU CONDUIT GATES-SLAB & EXPANDING

Design: API 6D

Sizes: 4" - 24"

Class: 150 - 900

WEDGE GATES

Design: API 600

Sizes: 2" - 12"

Class: 150 - 900

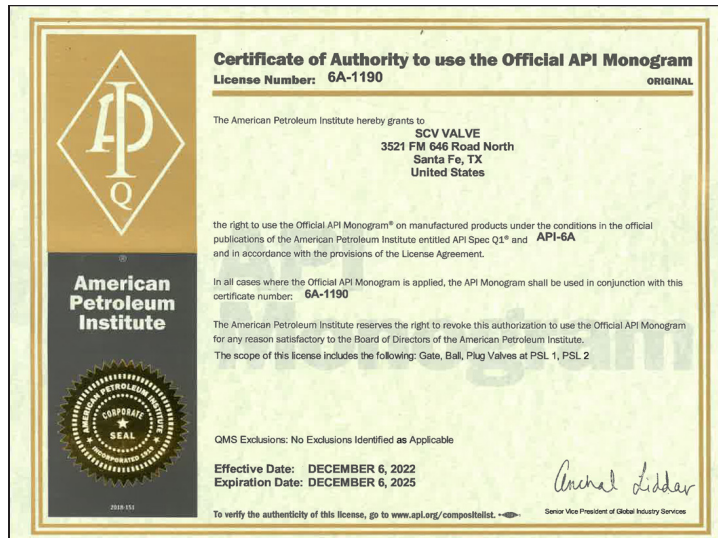


*Certain class 150 & 300 to manufacture standard end to end.

Certifications & Registrations

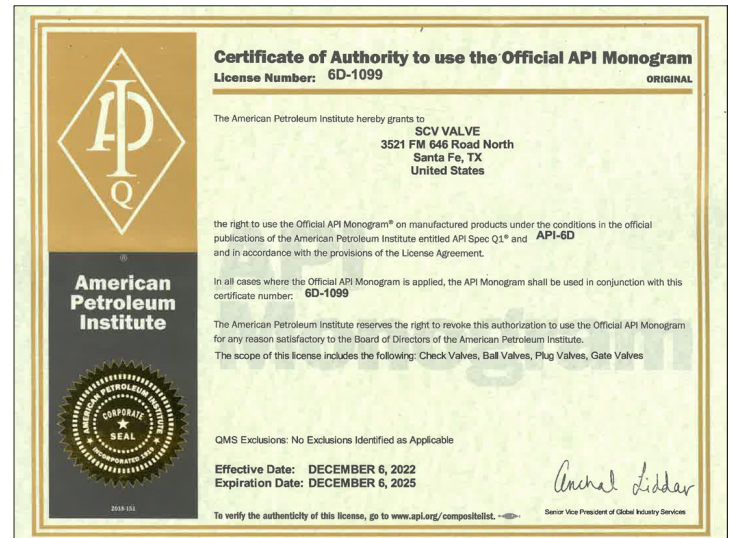
American Petroleum Institute (API)

API 6A Certification



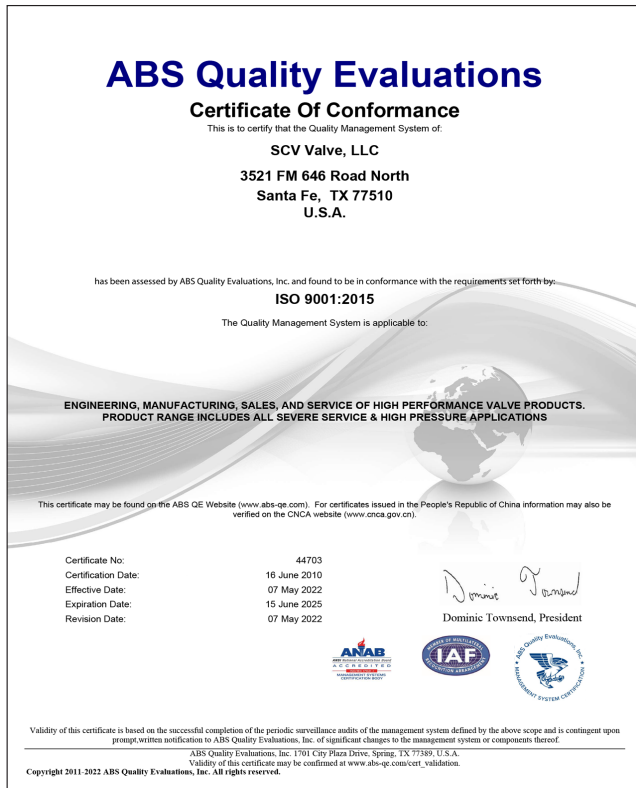
Note: Extension letter available on our website.

API 6D Certification



Note: Extension letter available on our website.

ISO 9001:2015 Certificate



CE PED Certificate



Canadian Registration Number

- Alberta - 0C07063.2
- British Columbia - 0C07063.21
- New Brunswick - 0C07063.27
- New Foundland & Labrador - 0C07063.20
- Northwest Territory - 0C07063.25
- Novascotia - 0C07063.27
- Nunavut - 0C07063.2N
- Manitoba - 0C07063.24
- Ontario - 0C07063.25
- Prince Edward island - 0C07063.29
- Yukon - 0C07063.2

YOUR GEOTHERMAL VALVEPARTNER

Keepin' it clean!



For more information, please visit at www.scvvalve.com or call (281)482-4728.

Harness Earth's Energy

As the demand for green energy skyrockets, sources for renewable energy plants increase daily. Geothermal Power Plants satisfy this demand very well with a minimal footprint and little impact on the environment. Geothermal energy is constantly produced within the earth and is a very clean, natural, reliable, and renewable energy source. The controlled capture and processing of this high-heat, pressurized release of thermal energy requires precision engineering and equipment.

Of the three types of Geothermal plants (Dry Steam, Flash Steam and Binary Cycle) high-quality, high-performance valves are critical components for successful geothermal energy conversion and delivery. All three geothermal power plants utilize heat in the form of steam, brine and/or heat transfer fluids to activate steam turbines which in turn produce electricity.

SCV manufactures a complete line of low-maintenance, dependable Thru Conduit Gate and Wedge Gate Geothermal Valves designed for this specific application and are made of materials that resist the inherent impurities contained in the

process fluids and gasses, silica scaling (which can cause build-up, valve leakage and/or complete valve failure) and high pressures and heat.

The SCV Geothermal Valve Line has been proven to operate efficiently at temperatures well above the required specifications (700°F/371°C) while offering minimal pressure loss.

APPLICATIONS

- Production Wells
- Processing
- Injection Wells

SCV GEOTHERMAL VALVE PRODUCTS

Thru Conduit Expanding & Slab Gate Valves

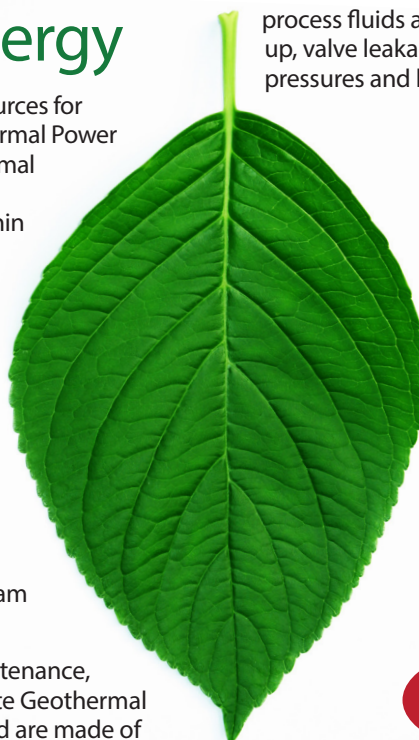
Size: 4" thru 24"

Class: 150 thru 900

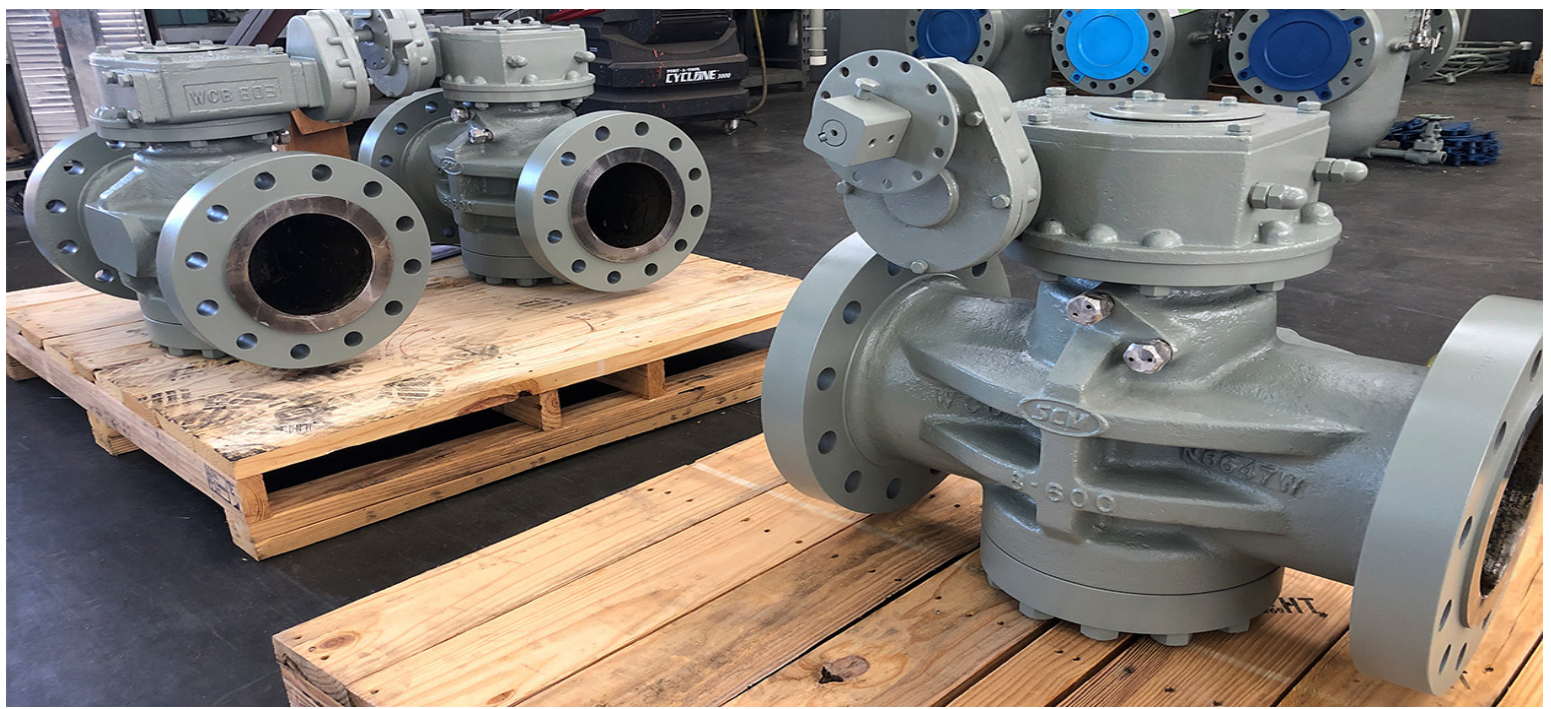
Wedge Gate Valves

Size: 4" thru 24"

Class: 150 thru 900



SCV VALVE
Innovative Valve Solutions®





SANTA FE, TEXAS
Sales, Projects, Engineering, Manufacturing & Warehousing

3521 FM 646 Rd. North
Santa Fe, TX 77510
Phone: (281) 482-4728
Fax: (281) 482-9728



SCV Valve is one of the most trusted & respected brands in the valve marketplace. SCV Valve is built on a foundation of consistent performance with an unwavering commitment to quality.

SCV Valve takes sincere pride in our ability to manufacture both commodity and specialty valves with timely delivery capabilities and competitive prices. Industries served include the oil and gas, petrochemical, & industrial sectors. All sizes, pressure classes, & metallurgical compositions are managed in-house utilizing the strictest quality control measures to ensure total customer satisfaction.

Valves utilized throughout the industry must meet rigorous quality and production standards. SCV Valve has earned its API 6A, API 6D, ISO: 9001, CE-PED, & CRN certifications while operating under the API Q1 Quality Management System.

www.scvvalve.com

