

Proform[™]
www.proformmat.com

888.331.3100 • sales@proformmat.com

Walk-Off Mats & Runners



Park Avenue Vinylback

Features

Super-durable fibers provide outstanding walk-off performance
Hobnail design provides aggressive soil removal
Heavy-duty SureTac™ vinyl back won't crack and ensures flat, durable edges
Not recommended on ceramic
Common Uses—loose lay in high, multi-directional traffic entrances, vestibules, lobbies, hallways, elevators

Specifications

Material
100% solution-dyed UV stabilized polypropylene fibers with 15% post-consumer recycled content

Backing
Premium SureTac™ Vinyl

Mat Sizes
3' x 5', 4' x 6'

Roll Sizes
3' x 60' (Charcoal and Walnut)
4' x 60', 6' x 60'

Custom Sizes
3', 4' and 6' widths x lengths to 60'
Roll width includes 1" vinyl edge on each roll side
Specify if nosing required on ends

Size Tolerance
+/- 2% on length and width

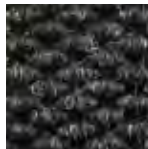
Thickness
3/8"

Face Weight
37 oz/sq yd

Recommended Installation
Apply nosing to end of mats

Possible LEED v 2009 Credits

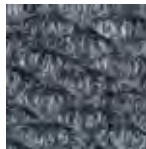
MR Credit 4 (1-2 points)
IEQ Credit 5 (1 point)



Onyx



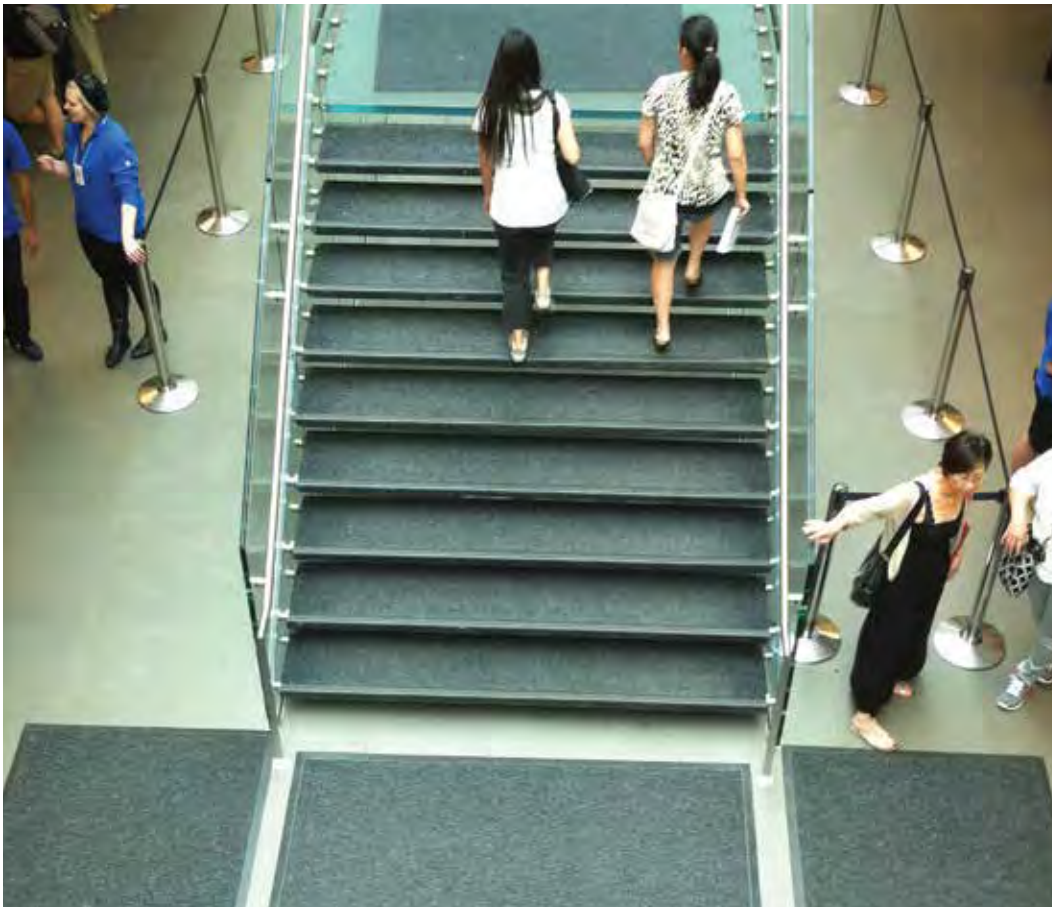
Walnut



Metallic



Brick



Pro Berber

Features

Hobnail design provides effective soil removal
 Low profile allows easy door clearance
 An economical matting solution
 Common Uses—loose lay in medium, multi-directional traffic entrances, vestibules, lobbies, hallways

Specifications

Material
 100% solution-dyed UV stabilized polypropylene fibers

Backing
 Premium non-staining vinyl

Mat Sizes
 2' x 3', 3' x 4', 3' x 5', 3' x 6', 3' x 10', 4' x 6', 4' x 8', 4' x 10'

Roll Sizes
 3' x 60', 4' x 60', 6' x 60'

Custom Sizes
 3', 4' and 6' widths x lengths to 60'

Size Tolerance
 +/- 2% on length and width

Thickness
 3/8"

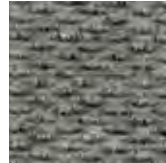
Face Weight
 24 oz/sq yd

Possible LEED v 2009 Credits

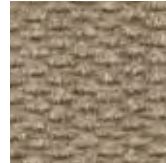
MR Credit 5 (1-2 points)
 IEQ Credit 5 (1 point)



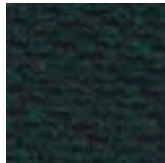
Charcoal



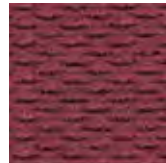
Gray



Sand



Green



Maroon

Waterdam Diamond

Features

Rigid construction traps dirt and moisture below the surface
 Molded rubber edges keep moisture contained
 Special gripper backing minimizes movement on most carpets and hard surfaces
 Common Uses—heavy, multi-directional traffic entrances, vestibules, lobbies, hallways

Specifications

Material
 100% solution-dyed polypropylene fibers with 15% post-consumer recycled content

Backing
 SBR cleated rubber—also available with launderable nitrile rubber backing for grease and chemical resistance

Mat Sizes
 2' x 3', 3' x 4', 3' x 5', 3' x 8' 5", 3' x 10', 3' x 12' 3", 3' x 16', 3' x 20', 4' x 6', 4' x 8' 5", 4' x 10', 4' x 12' 3", 4' x 16', 4' x 20', 6' x 8' 5", 6' x 12' 3", 6' x 16', 6' x 20'

Size Tolerance
 +/- 2% on length and width

Thickness
 3/8"

Face Weight
 36 oz/sq yd

Note
 Standard sizes only, no seaming

Possible LEED v 2009 Credits

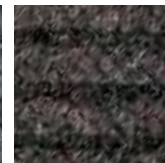
MR Credit 4 (1-2 points)
 MR Credit 5 (1-2 points)
 IEQ Credit 5 (1 point)



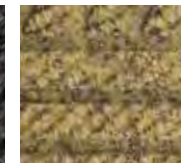
Charcoal



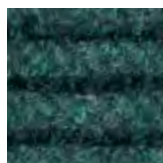
Gray



Brown



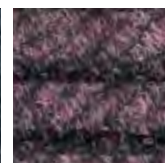
Beige



Spruce



Blue



Beaujolais

Proform™
www.proformmat.com

Waterdam

Features

Reinforced waffle design provides crush-proof scraping action
 Holds 1.5 gallons of water per square yard
 Special gripper backing minimizes movement on most carpets and hard surfaces
 Common Uses—loose lay in outdoor or indoor settings, entrances, vestibules, lobbies, workstations, hallways

Specifications

Material
 100% solution-dyed polypropylene fibers

Backing
 Nitrile gripper

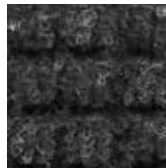
Mat Sizes
 2' x 3', 3' x 4', 3' x 5', 3' x 10', 3' x 12', 3' x 16', 3' x 20'
 4' x 6', 4' x 8', 4' x 10', 4' x 12', 4' x 14', 4' x 16', 4' x 20'
 6' x 8', 6' x 12', 6' x 16', 6' x 20'

Thickness
 1/4"

Face Weight
 24 oz/sq yd

Possible LEED v 2009 Credits

MR Credit 5 (1-2 points)
 IEQ Credit 5 (1 point)



Charcoal



Gray



Dark Brown



Evergreen



Blue



Burgundy



Red/Black

Pro Tough

Features

Quality olefin yarns are expertly tufted
 Absorbs over one gallon of water per square yard
 Dries much faster than nylon fibered mats
 Common Uses—loose lay in medium traffic entrances, vestibules, lobbies, hallways

Specifications

Material
 100% continuous filament solution-dyed olefin tufted yarn

Backing
 Non-staining vinyl

Mat Sizes
 2' x 3', 3' x 4', 3' x 5', 3' x 6', 3' x 10', 4' x 6', 4' x 8', 4' x 10'

Roll Sizes
 3' x 60', 4' x 60', 6' x 60'

Custom Sizes
 3', 4' and 6' widths x lengths to 60'

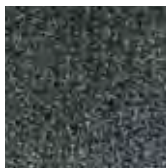
Size Tolerance
 +/-2% on length and width

Thickness
 3/8"

Face Weight
 18 oz/sq yd

Possible LEED v 2009 Credits

MR Credit 5 (1-2 points)
 IEQ Credit 5 (1 point)



Charcoal



Brown/Silver



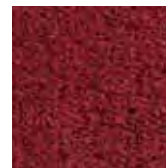
Dark Brown



Forest Green



Blue



Red

Pro Rib

Features

Traditional, high performance indoor/outdoor ribbed mat
Bi-level rib design offers aggressive walk-off performance
Ideal for tough indoor applications
Common Uses—loose lay in medium traffic entrances, vestibules, lobbies, hallways

Specifications

Material

100% solution-dyed UV stabilized polypropylene fibers

Backing

Premium non-staining vinyl

Mat Sizes

2' x 3', 3' x 4', 3' x 5', 3' x 6', 3' x 10', 4' x 6', 4' x 8', 4' x 10'

Roll Sizes

3' x 60', 4' x 60', 6' x 60'

Custom Sizes

3', 4' and 6' widths x lengths to 60'

Size Tolerance

+/-2% on length and width

Thickness

3/8"

Face Weight

24 oz/sq yd

Pattern

Ribs run length of roll

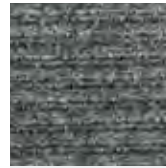
Possible LEED v 2009 Credits

MR Credit 5 (1-2 points)

IEQ Credit 5 (1 point)



Charcoal



Gray



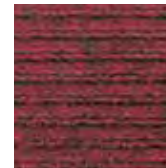
Chocolate



Forest Green



Blue



Red

Bristle Pro

Surface System

Features

Extremely durable, hard-wearing nylon bristles clean footwear with each step
Resistant to all weather and extreme conditions
Drop-through construction hides collected dirt from view
Rolls up for easy handling and maintenance
Common Uses—loose lay at low, medium or high traffic entrances

Specifications

Material

Anodized aluminum and vinyl with nylon (6.6) brush inserts;
65.63% pre-consumer recycled content

Mat Sizes

18" x 31", 24" x 36"

Thickness

7/8"

Weight

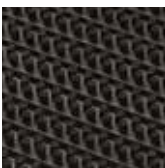
18" x 31" = 13 lbs

24" x 36" = 19.4 lbs

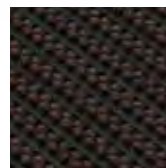
Possible LEED v 2009 Credits

MR Credit 4 (1-2 point)

IEQ Credit 5 (1 point)



Black



Brown