

DESIGN

HILLSBORO - 9309



A



B



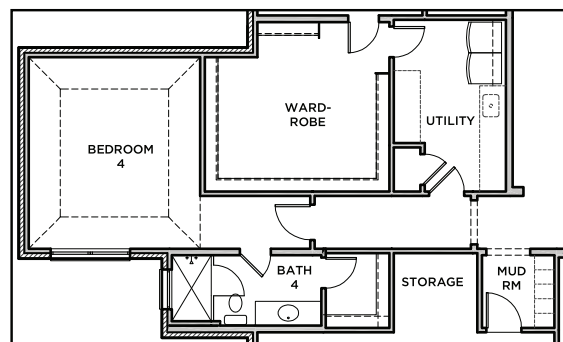
C



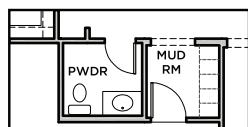
D



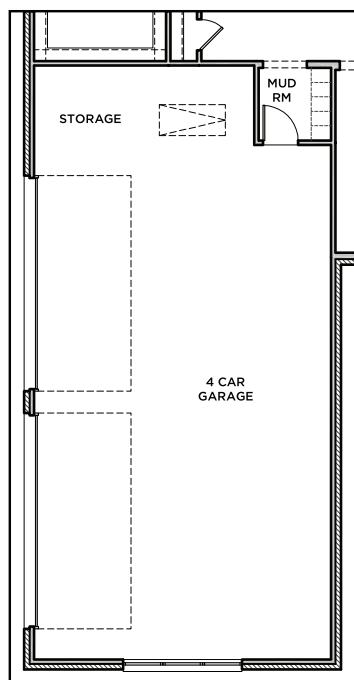
All Product including Architectural Designs, ©2000-2025, Shaddock Homes, LTD., All rights reserved. There may be existing or future design changes made in the floorplans, building products, methods, square footage or designs used in our homes that are not reflected in our information, sales center or in our models. The materials, designs, square footages, features, and amenities shown are based upon current development plans, which are subject to change without notice. No guarantee is made that the designs, square footages, materials, features, and amenities depicted by artist's renderings or otherwise described will be built, or if built, will be of the same type, size or nature as depicted or described. All stone elevations, metal roofs, cast stone door and window headers and solid sawn cedar posts are optional, but available via change order. Front doors will match the specification sheet or chosen door upgrade. Prices and terms subject to change without notice. REVISION DATE: 10.28.19



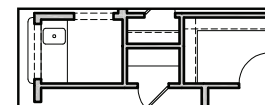
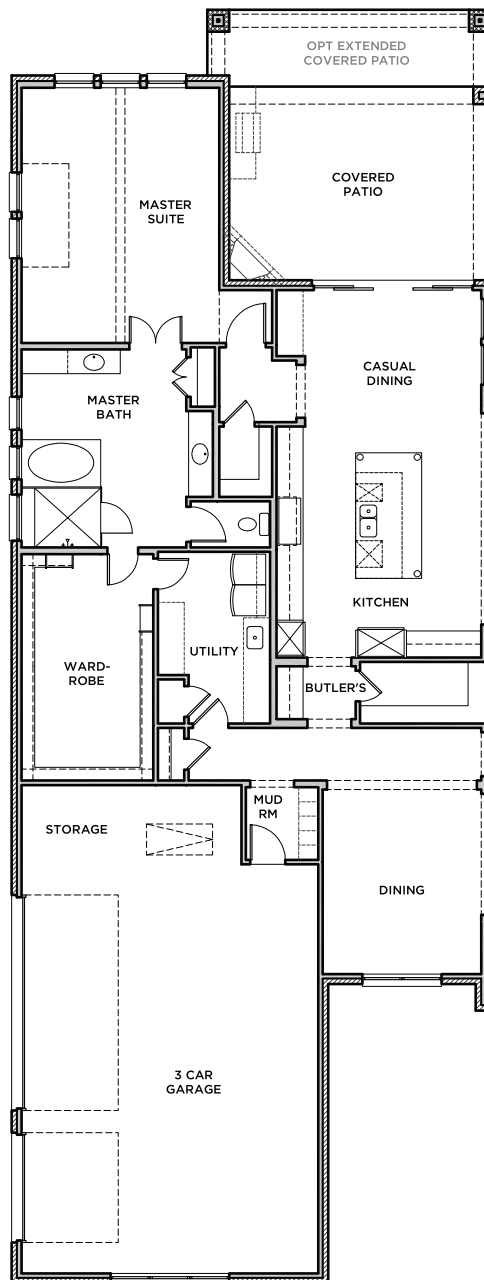
OPT BED 4 & BATH 4



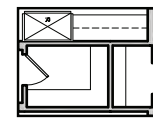
OPT SECOND POWDER BATH



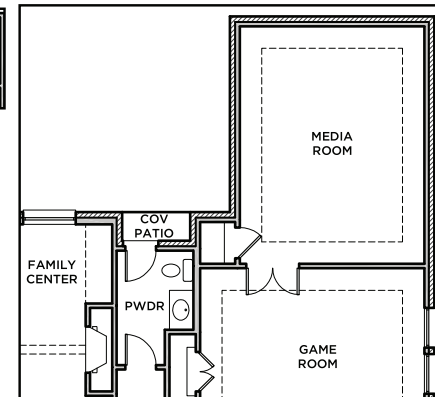
OPT 4TH CAR GARAGE



OPT WET BAR



OPT WINE CLOSET



OPT MEDIA ROOM

FIRST FLOOR

HILLSBORO 9309 (10.28.19)

First Floor	S.FT 3865
Total Living Area	3865
3 Car Garage	860
Covered Entry	55
Covered Porch	14
Covered Patio	291
Total Area	5085

Options:	
Media Room 2	87
*Media Room	293
***Bed 4 & Bath	383
**Powder Bath	38
4th Car Garage	192

*deletes 3 sq. ft. from covered patio

**deletes from 3 Car Garage only

***subtracts 66 sq. ft. from 3 Car Garage/Storage

SHADDOCK HOMES