

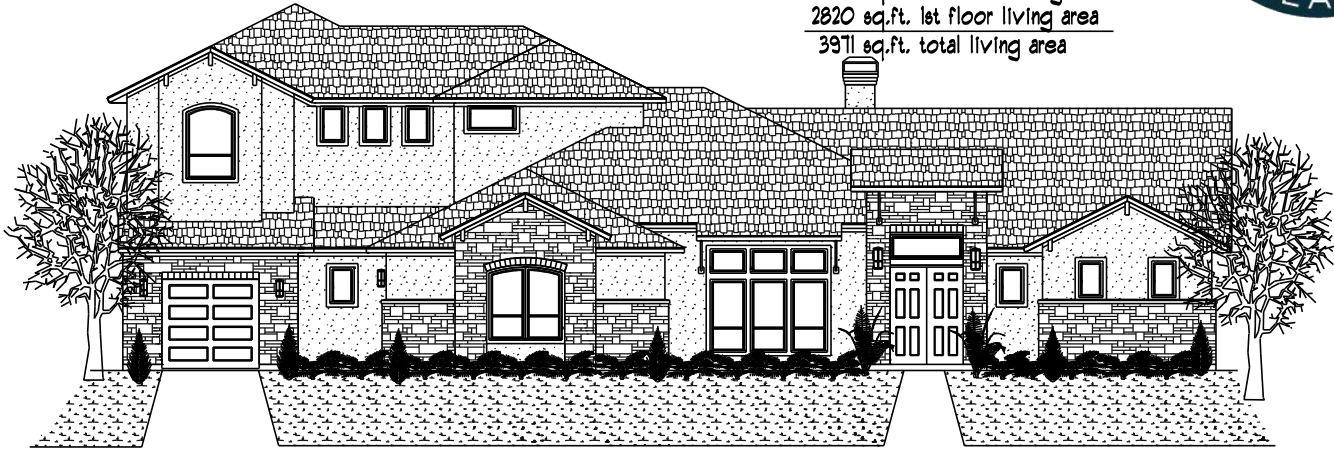
- 4-BEDROOMS
- 3-BATHS PLUS 2- PWDR BATHS
- STUDY
- DININGROOM
- REAR COVERED PORCH
- DBL FRONT DOORS
- 3RD CAR GARAGE
- BARREL CEILING MASTER BATH
- STONE ON FRONT ELEVATION

the nick laus

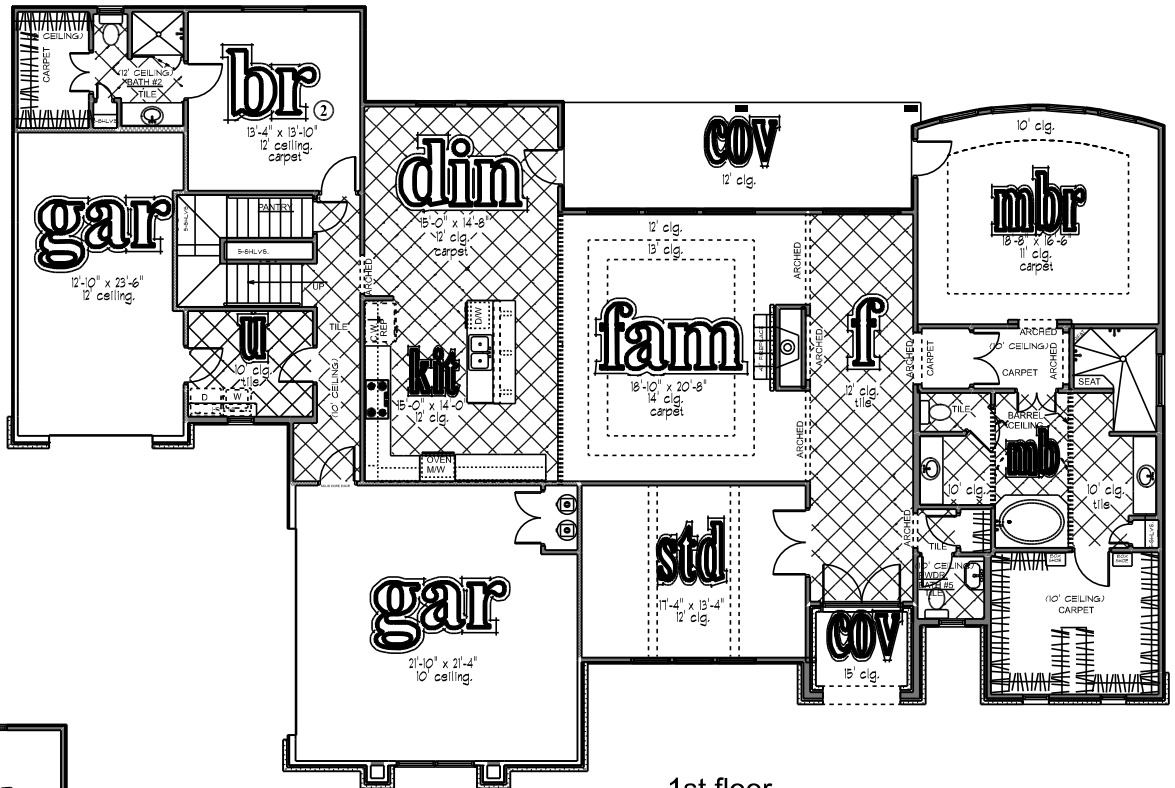


3873 WRANGLER LOOP

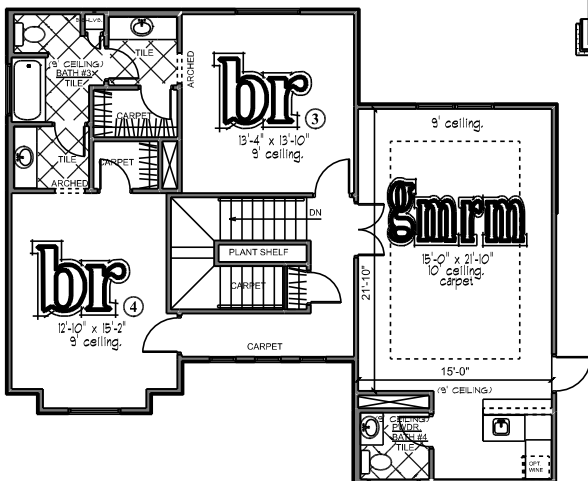
1151 sq.ft. 2nd floor living area
 2820 sq.ft. 1st floor living area
 3971 sq.ft. total living area



front



1st floor



2nd floor

Square footage and dimensions are approximate. Floorplans are the artist's concept and may vary. All features are subject to change without notice.