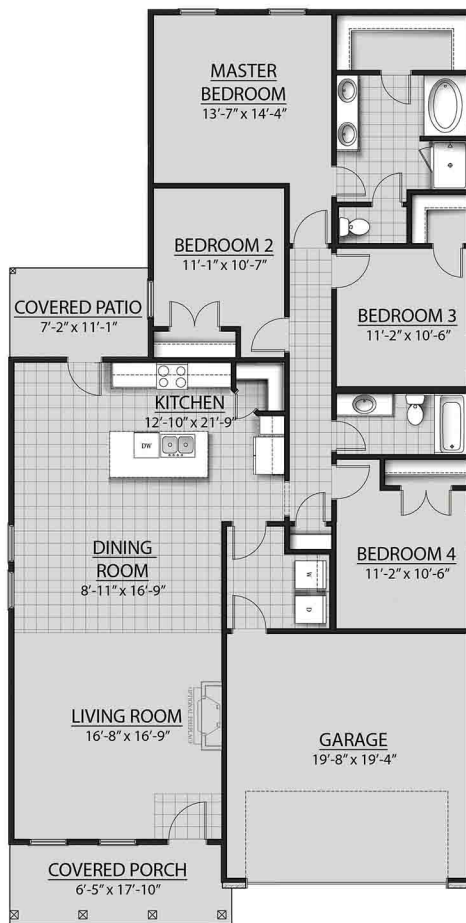


# THE OAKRIDGE H IV PLAN



## LIVING AREA

1835 Square Feet

## TOTAL AREA

2435 Square Feet

## FEATURES

- Open Floor Plan
- Four Bedrooms, Two Bathrooms
- Two Car Garage
- Covered Patio
- Brick and Siding Exterior
- Recessed Can Lighting in Kitchen
- Double Master Vanity
- Walk-In Master Closet
- Separate Master Shower



Floor plans and elevations are subject to change without notice. Elevations and renderings are artistic conceptions and may not accurately depict home styles. Windows, doors and plan configurations are subject to change per elevation. Information contained in this flyer is subject to errors, omissions, changes, withdrawals and prior sales without notice.