

DABBERT
CUSTOM HOMES



SCAN FOR
CURRENT PRICING
INCLUDES 3-STALL GARAGE


THE

Ashbury

PROPERTY FEATURES

- Two-story
- Front covered porch with maintenance-free decking
- Large pantry
- Double-volume ceilings in living room
- Main floor office or bedroom
- Large owner's suite & closet on main floor
- Three bedrooms on upper floor
- Large upper-floor living space
- Upper-floor laundry room and pocket office
- Unfinished lower floor
- Up to two additional bedrooms on lower floor
- Optional morning kitchen
- Insulated & sheetrocked garage with floor drain

 5 BDRM  2.5 BATH  4,805 SQFT

 3 CAR  54' WIDE



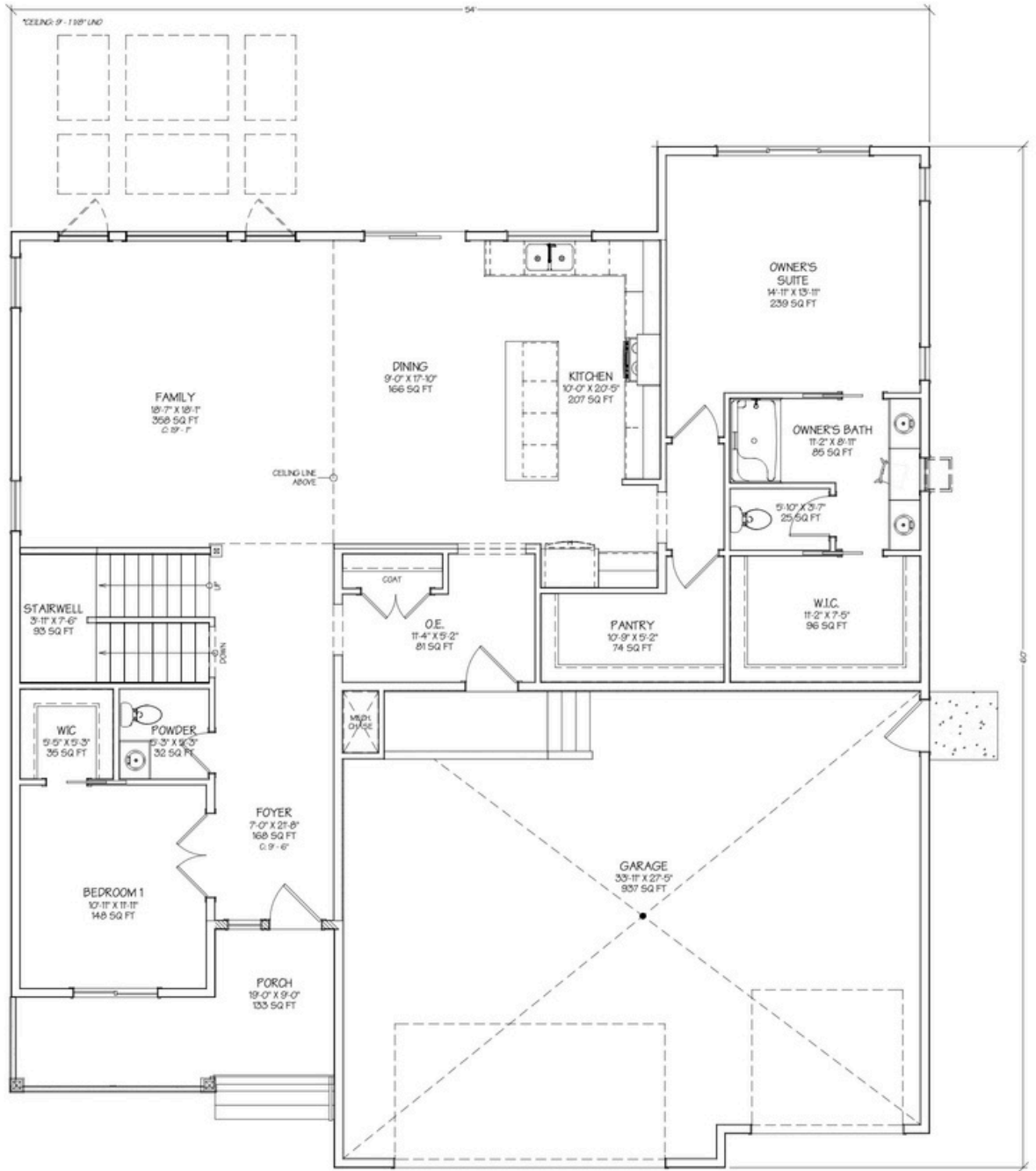
Mike Gillund

DABBERT CUSTOM HOMES
REPRESENTATIVE

701-371-9163
MIKE@DABBERTHOMES.COM
DABBERTHOMES.COM

B. BEYOND
REALTY
Be Moved.
BEYONDDREALTYFM.COM

THE ASHBURY



Ashbury 3.0 - Base Plan - Main Floor - 1,850 sq ft

THIS PLAN IS FEDERALLY COPYRIGHTED BY



©Dabbert Custom Homes. Plans are copyrighted and/or otherwise subject to intellectual property rights of Dabbert Custom Homes, LLC and/or others and cannot be reproduced or copied without Dabbert Custom Homes, LLC prior written consent.

THE ASHBURY

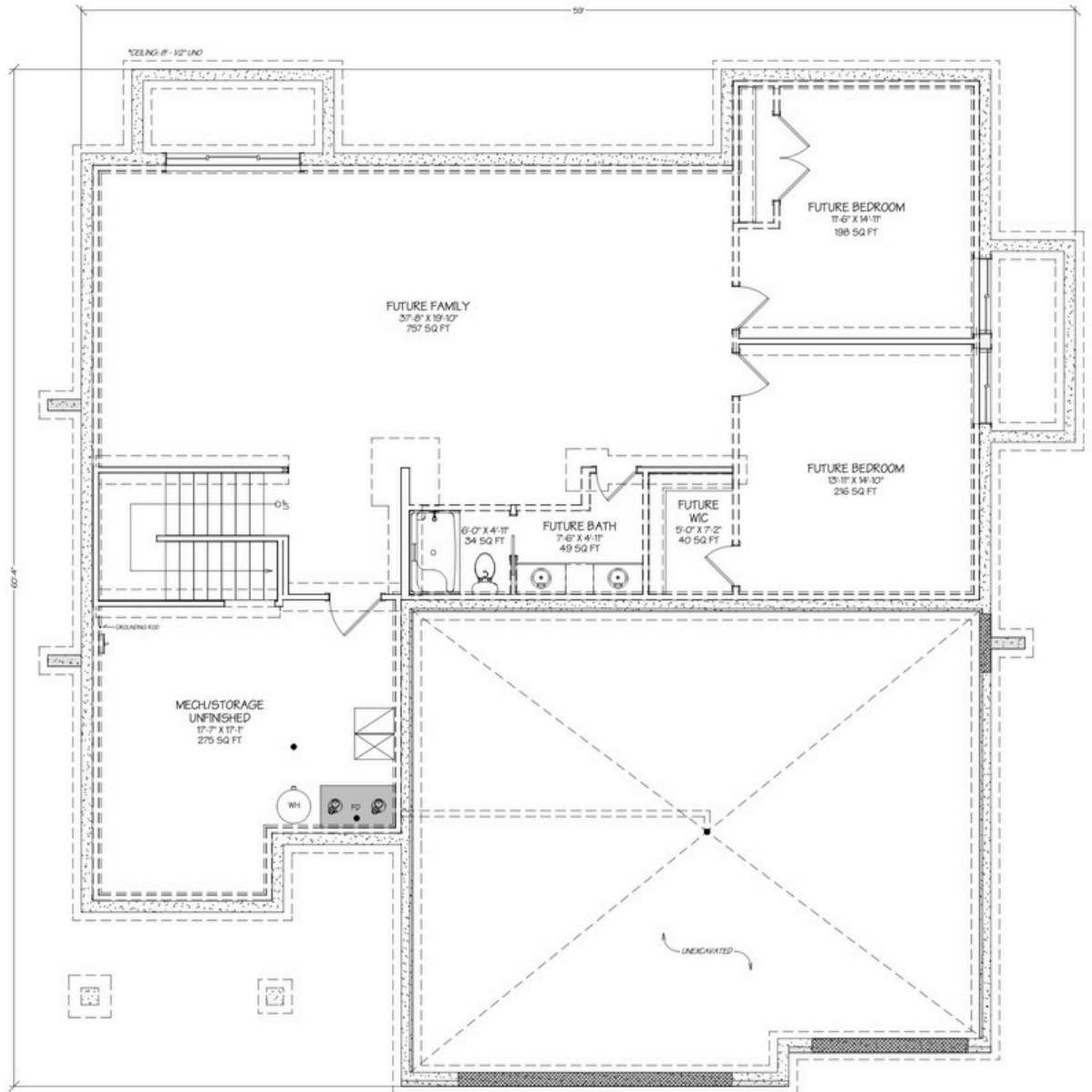


Ashbury 3.0 - Base Plan - Upper Floor - 1,096 sq ft

THIS PLAN IS FEDERALLY COPYRIGHTED BY



THE ASHBURY



Ashbury 3.0 - Base Plan - Lower Floor - 1,859 sq ft

THIS PLAN IS FEDERALLY COPYRIGHTED BY



©Dabbert Custom Homes. Plans are copyrighted and/or otherwise subject to intellectual property rights of Dabbert Custom Homes, LLC and/or others and cannot be reproduced or copied without Dabbert Custom Homes, LLC prior written consent.