



STONE BRIDGE HOMES NW



Autumn Sunrise



**SINGLE-LEVEL
LIVING!**

**LARGE
VAULTED
COVERED
PATIO!**

**8813 SW PEORIA LANE
HOMESITE 304
PLAN 462 STD**

ABOUT THE PROPERTY

Experience refined single-level living in this Earth Advantage Certified home. The open-concept design is defined by high-end finishes, including drop-bevel alder stained cabinetry, slab quartz countertops, and undermount sinks throughout the kitchen and bathrooms. The great room is a spectacular centerpiece, boasting a vaulted ceiling with built-in shelves flanking a floating box beam mantel above a cozy gas fireplace. The gourmet kitchen features Whirlpool stainless steel appliances, including a 5-burner gas cooktop, double wall ovens, wall microwave, stainless steel tub dishwasher and chimney hoodvent.

Relax in the spacious primary suite, which offers a large walk-in closet and an elegant adjoining bath with a tiled shower, a soaking tub, and a dual-sink vanity. The backyard is fully landscaped, equipped with a timed sprinkler system, with a gas line ready for your future barbecue, and is fully fenced with a gate.

FEATURES

- ✓ 3 BED/ 2.5 BATHS/ DEN/BR.4
- ✓ 2,330 SF HOME
- ✓ VAULTED GREAT ROOM
- ✓ GENEROUS PRIMARY SUITE
- ✓ SATIN NICKEL LIGHTING PACKAGE
- ✓ OWNER'S ENTRY W/BENCH & COATHOOKS
- ✓ CENTRAL AIR CONDITIONING
- ✓ FULLY LANDSCAPED FRONT & REAR YARD FENCED W/GATE

\$824,987

RMLS# 662554836



**STONE BRIDGE
HOMES NW**



503.746-6215

GaryC@stonebridge-realty.com



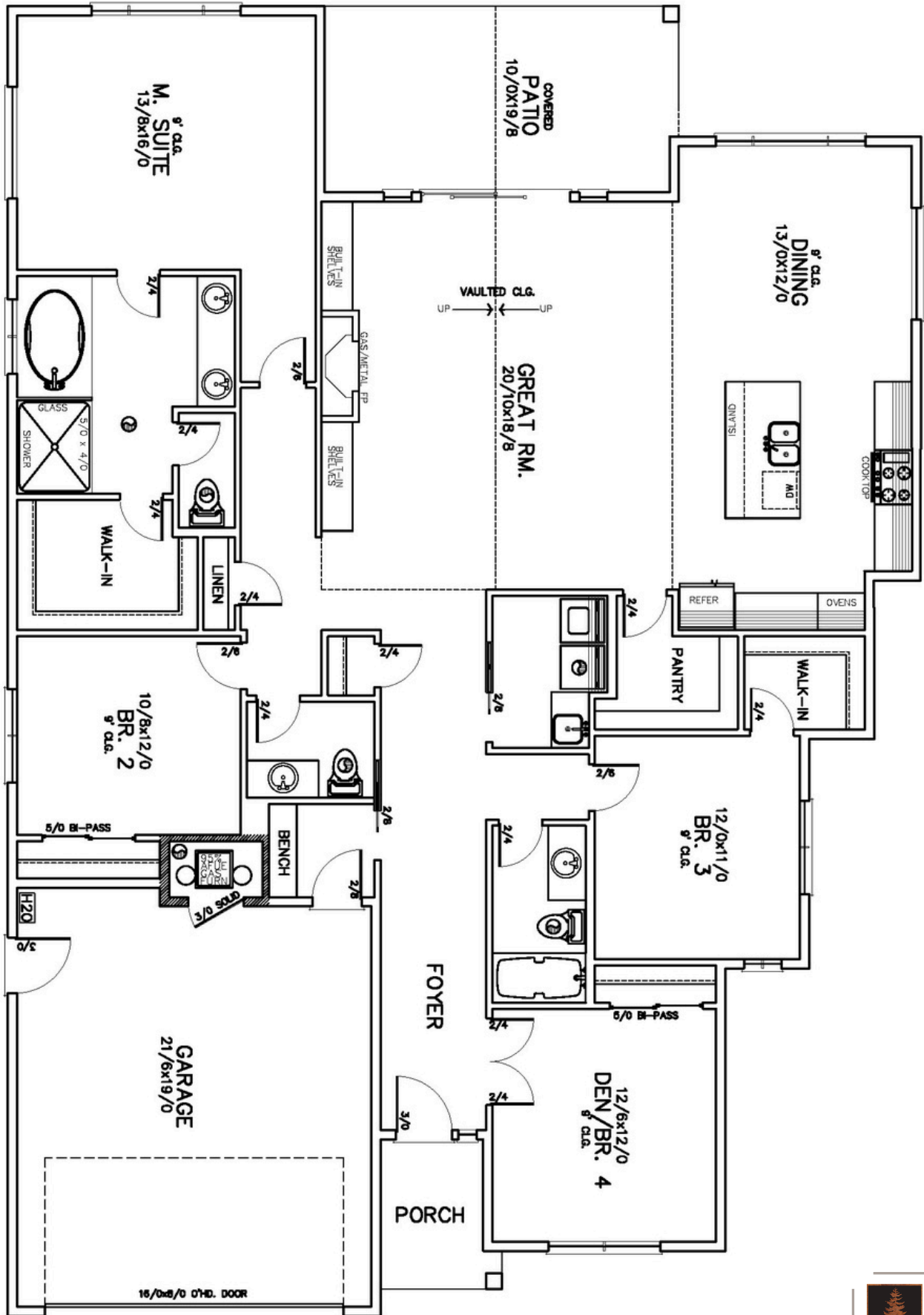
**MODEL HOME:
9345 SW SALINAN STREET
TUALATIN, OR 97062**

Prices, features, and incentives are subject to change. Photos and drawings are for illustrative purposes only and actual details may vary. Please see a sales representative and the sale agreement for additional information. CCB#173318



HOMESITE 304

8813 SW PEORIA LANE
TUALATIN, OR 97062



Autumn Sunrise