

# DESIGN

FRITCH - 3124<sub>F</sub>



A



B



C



D



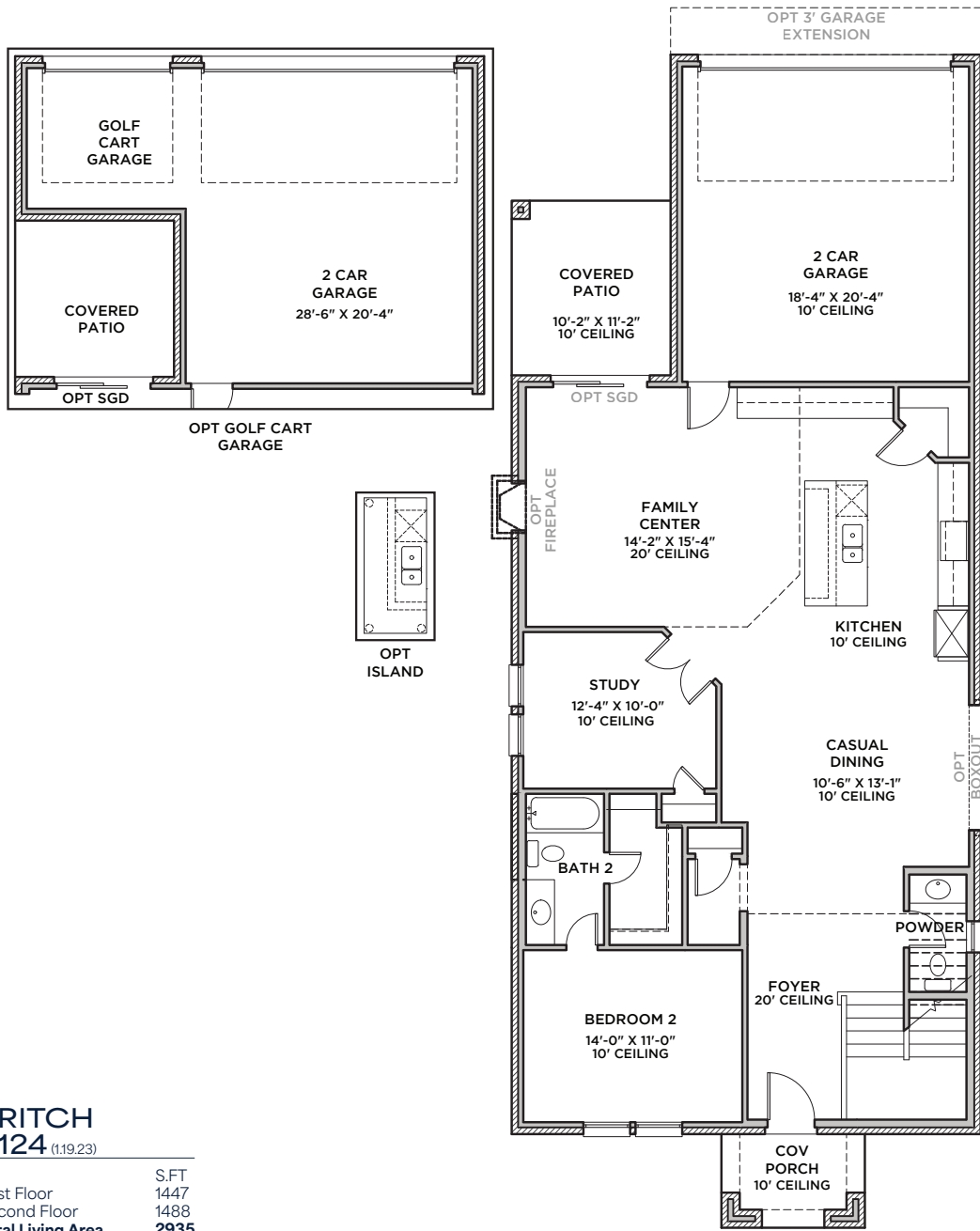
E



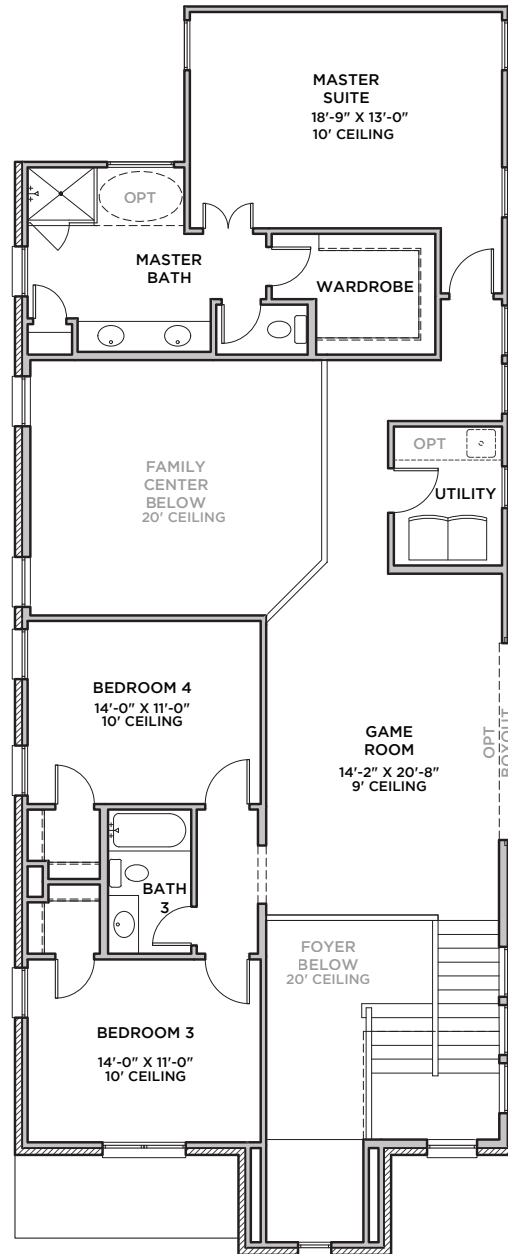
J



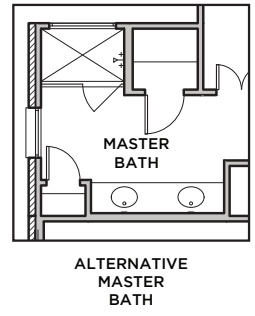
All Product including Architectural Designs, ©2000-2026, Shaddock Homes, LTD., All rights reserved. There may be existing or future design changes made in the floorplans, building products, methods, square footage or designs used in our homes that are not reflected in our information, sales center or in our models. The materials, designs, square footages, features, and amenities shown are based upon current development plans, which are subject to change without notice. No guarantee is made that the designs, square footages, materials, features, and amenities depicted by artist's renderings or otherwise described will be built, or if built, will be of the same type, size or nature as depicted or described. All stone elevations, metal roofs, cast stone door and window headers and solid sawn cedar posts are optional, but available via change order. Front doors will match the specification sheet or chosen door upgrade. Prices and terms subject to change without notice. [REVISION DATE: 119.2023](#)



FIRST FLOOR



SECOND FLOOR



**FRITCH 3124** (1.19.23)

	S.FT
First Floor	1447
Second Floor	1488
<b>Total Living Area</b>	<b>2935</b>
2 Car Garage	415
Covered Patio	114
Covered Porch	122
Total Area	3586
<b>Options</b>	
Golf Cart Garage	107
Garage Ext.	60

SHADDOCK HOMES