



Crawford Key Features

- ♦ Open floor plan
- ♦ Expansive kitchen with island
- ♦ Vaulted loft on second floor
- ♦ Double tray ceiling in owner's suite
- ♦ Owner's bath separate tub & shower
- ♦ Guest suite on main floor
- ♦ Open cell spray foam insulation

The Legacy Collection



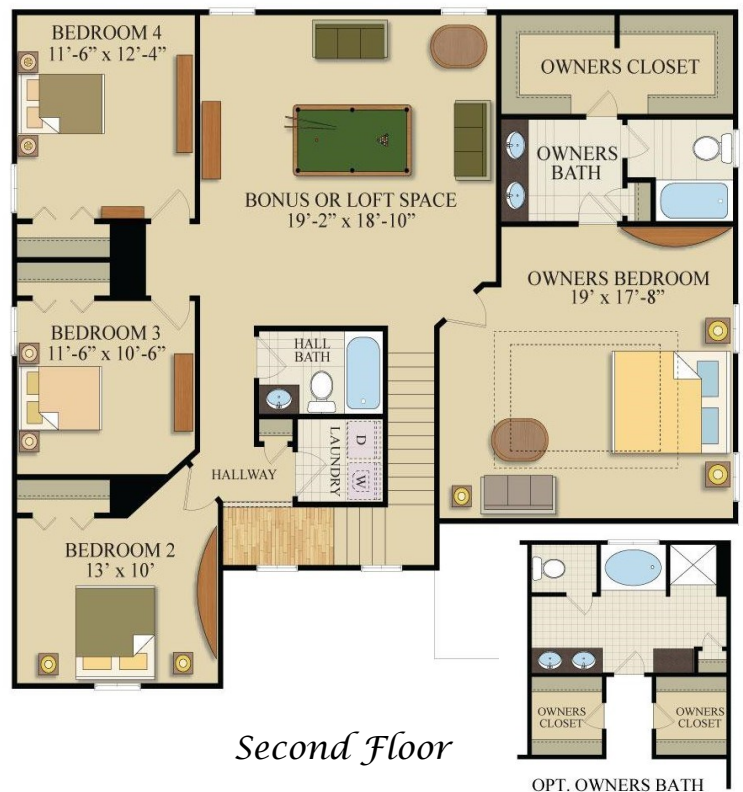
3,047 sq. ft.

5 Bedrooms

2.5 Baths



First Floor



Second Floor

Discover the Konter Difference

www.konterhomes.com



22 Commerce Pl, Savannah GA 31406 / 912-354-9314 / www.konterhomes.com



Konter Quality Homes reserves the right to make modifications to floor plans, materials, and specifications without notice. Illustrations are artist's renderings only. Dimensions are approximate. These plans are property of Konter Homes Inc, 2002. They are protected by the copyright laws of the United States and any reproduction of these plans is a violation of US copyright laws.




Legacy Collection Luxury Features and Options

Luxury Standard Features

Exterior Construction Features:

- Maintenance Free exteriors of Vinyl siding and soffit, brick front accent
- 12'x12' Concrete patio, driveway and walkways
- 2 exterior hose bibs
- Termite Soil Treatment Guarantee with renewable bond
- All framing members 16" on center
- Hand built 2x6 O.C. roof framing (no truss roof)
- Insulated steel exterior doors
- Rain diverters above all exterior entrances



Energy Efficiency Features:

- Open cell spray Foam insulation under roof deck
- R-13 fiberglass insulation in all exterior walls
- Programmable thermostat
- Energy Star** rated Low E Insulated glass tilt sash windows
-  High Efficiency heat pumps and HVAC units with Puron
- R-8 insulated high efficiency duct work with fresh air intake
- Air infiltration fighting house wrap
- Vented exhaust fans in all bathrooms
- Quick recovery 50-gallon water heater


Interior Features:

-  **MOHAWK** Laminate wood in foyer
-  **MOHAWK** Stain resistant carpet in dry areas
- Vinyl flooring in bathrooms and kitchen
- 6'8" tall interior doors
- Designer wall paint colors with contrasting semi-gloss trim paint
- 2-piece crown molding, chair railing and wainscoting in Dining Room
- 9' ceiling on ground floor of 2 story homes
- Full size fully finished Double Car Garage
- Pull down stairway to attic
- Smoke and Carbon Monoxide detectors
- Satin Nickel, Oil Rubbed Bronze, or Black door hardware
-  **KEMPER** Echo cabinets
- Designer laminate counter tops

Kitchen Features:

-  **FRIGIDAIRE** Black Smooth top electric range and microwave/vent hood
-  **FRIGIDAIRE** Energy Star dishwasher and disposal
- Recessed ice maker connection

Bathroom Features:

- Double sinks in Owner's bath
-  **MOEN** Chrome Faucets and bath accessories
- Maintenance free fiberglass tub/showers
- Pedestal sink in Powder room
- Laminate counter tops
- Low flow elongated bowl toilets


Landscaping Features:

- Sodded yard
- 18 plants in front of home, Street Tree, Pine Straw Beds

Electrical Features:

- Ceiling fans in Great Room, Bonus Room, and Owner's Suite
- 150 or 200 amp electrical service panel
- Prewire for cable TV or CAT 5 high speed internet - 1 per room
- 2 exterior weatherproof GFCI electrical receptacles
- Prewire for electric garage door opener

Customer Care and Warranty:



-  Home Buyers Warranty
- Design Consultation and 2 hours of professional design time
- Pre-construction orientation
- Post construction demonstration and Builder warranty meeting
- Personalized customer care service - On Demand

Optional Features


Exterior Options:

- Irrigation package - 3 zone
- Garage Coach Lights
- Exterior garage exterior door
- Security lights
- Rear covered porch
- Additional concrete


Interior Options:

-  **daltile** Ceramic tile flooring
-  **MOHAWK** Laminate, Hardwood flooring, & premium carpet
- Lever and egg-shaped door hardware
- HVAC Perfect Temp Zone
- Floor receptacle
- Electric garage door opener
- Home Theater and stereo wiring and speakers
- Laundry Sink
- Coffered ceiling in dining room

Bathroom Options:

- Luxury Owner's fiberglass shower and separate garden tub
- Owner's bath granite vanity tops
- Ceramic tile shower in owner's bath
-  **MOEN** decorative fixtures
- Walk-in shower in secondary baths

Kitchen Options:

- Granite counter tops
- Ceramic tile/Subway Tile backsplash
-  **FRIGIDAIRE** Stainless steel appliances
- 36" or 42" tall cabinets with crown molding
- Additional cabinet door styles, painted, and glazed
- Decorative cabinet hardware
- Pendant lighting



Gold and Platinum Standards

Included Platinum Standards in the Legacy Collection



- Coffered Ceiling with Wainscoting in Dining Room
- Handscraped Wood Laminate Flooring (first floor common areas)
- Stainless Steel Appliances
- Granite Countertops (kitchen and all bathrooms)
- Owner's Bath Garden Tub and Separate Shower
- Ceramic Tile (owner's bath floor)
- Ceramic Tile Backsplash (kitchen and owner's garden tub)
- Kemper 42" Upper Cabinets with Crown
- Pendant Lighting over the Kitchen Island
- Upgraded Plumbing Fixtures (Brushed Nickel or Oil Rubbed Bronze)
- Covered Rear Patio
- Brick front accent
- 3 Zone Irrigation System
- Garage Door Openers

Included Gold Standards in the Cottage Collection



- Stainless Steel Appliances
- Granite Countertops in Kitchen and all Bathrooms
- Kemper 36" Upper Cabinets with Crown
- 3 Zone Irrigation System
- Pendant Lighting over the Kitchen Island
- Faux Wood Blinds on all windows

Suzanne Ward, Area Sales Manager
suzanne@konterhomes.com
912-655-7366

Michelle Adams, New Home Specialist
michelle@konterhomes.com
912-323-0646

Harmony Thompson, New Home Specialist
harmony@konterhomes.com
912-424-8483