

# The Danbury Craftsman







Driveway & Landscaping not included.  
Not actual home, but similar plan.

**\$844,900\***

**Fall Occupancy**

Cedar Ridge (Lot 9)  
4979 113th Street  
Pleasant Prairie, WI 53158

-  3 Bedrooms
-  2 Bathrooms
-  2,519 SF
-  3 Car Garage

#### Directions:

I-94 to 104th Street/Hwy 165. East on 104th Street/Hwy 165. At the Roundabout, take the 1st exit onto Springbrook Rd. Turn left onto 47th Ave. Right onto 113th Street into the neighborhood.

\*Price subject to change without notice.



## KITCHEN FEATURES

Designer kitchen with 42" painted maple cabinets with crown molding, soft close doors/drawers, & built-in look refrigerator panels  
Quartz countertops, tile backsplash, Kohler® Cairn sink & island w/ stained cabinets & snack bar

Box up ceiling w/ crown molding above island

Large corner pantry with melamine shelving

GE® Cafe kitchen appliance package w/built-in microwave, dishwasher, slide-in gas range, chimney hood & French door refrigerator in stainless steel finish w/ brushed bronze hardware

## MAIN LEVEL FEATURES

Mohawk® luxury vinyl plank flooring in kitchen, nook, great room, foyer, office, mudroom, laundry room, sunroom, bath 2, & hallways

16'x12' sunroom

Gas fireplace w/ stacked stone & boxed mantel w/ returns

Box up ceiling in great room w/ crown molding

Office w/ glass double doors

Bath 2 w/ tiled tub surround to ceiling w/ corner shelf & window above, quartz countertop & linen closet

Separate laundry & mudroom w/ pocket door

Built-in boot bench in mudroom

Cabinet, countertop/folding table, & utility sink in laundry room

Select jamb & cased windows

4 ¼" base & 3 ½" casing

10' ceiling height throughout main level & 12' ceilings in office & foyer

## MASTER SUITE FEATURES

Double bowl vanity w/ drawers in between

Walk-in tiled shower to ceiling w/ glass door, tiled bench & wall-to-wall tile shelf

Separate commode room

Spacious walk-in closet

## ADDITIONAL FEATURES

Fibercement siding, shake, trim, corner boards & wraps

Basement bathroom plumbing rough-in

Finished basement staircase

Two 48"x48" windows in basement

Solid core interior doors

8' tall insulated steel overhead garage doors w/ ultra quiet openers

2x6 construction

Orange peel drywall finish

Pella® windows

Moen® faucets & Kohler® plumbing fixtures

Maxim® light fixtures

Builder warranty included

Focus on Energy Certified



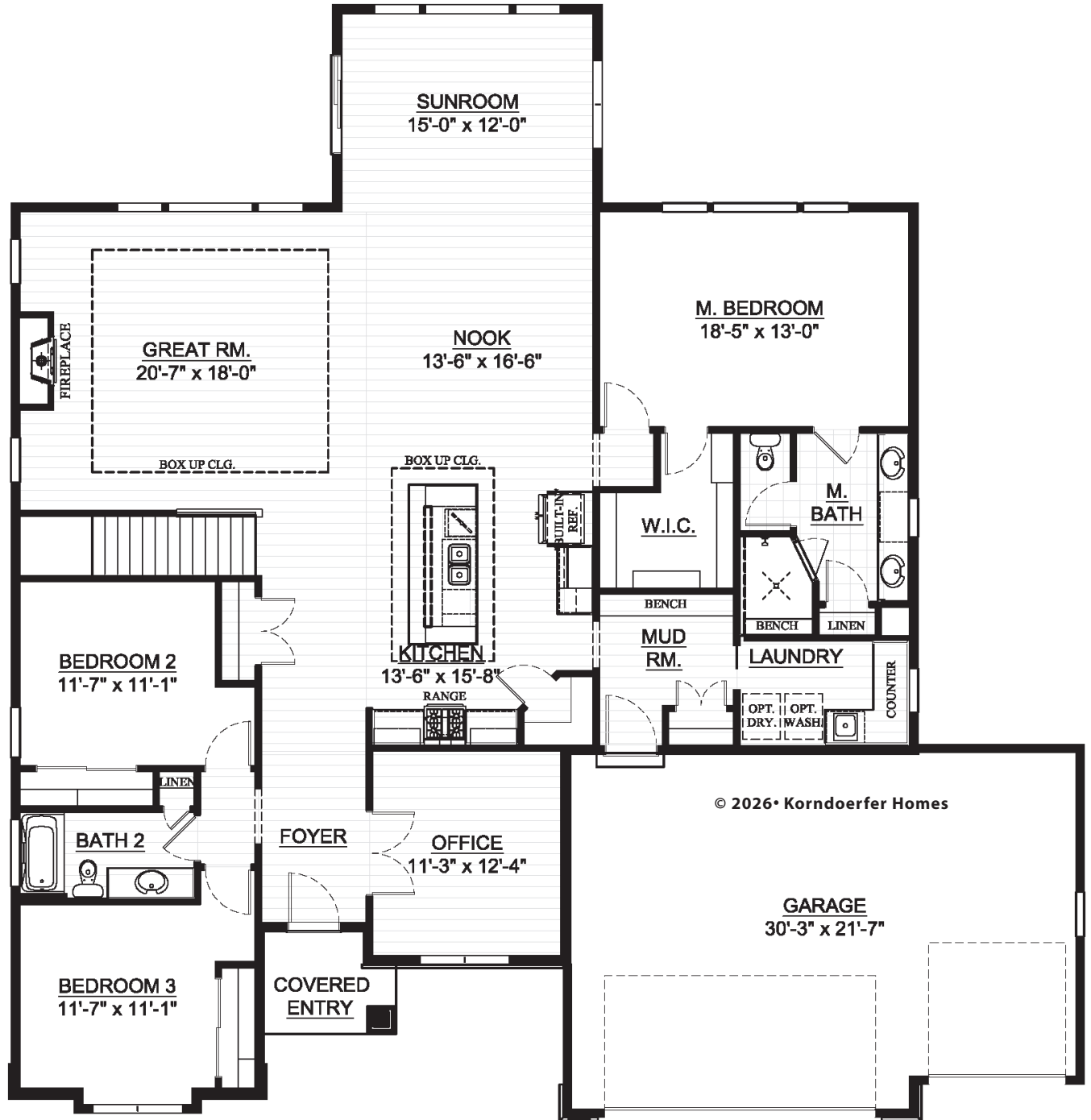
## ASK RYAN!

Online Sales Consultant  
262-884-9551  
sales@korndoerferhomes.com

Floor Plan on Other Side →



# The Danbury Craftsman Floor Plan



**FIRST FLOOR**  
2,519 SF



## ASK RYAN!

Online Sales Consultant  
262-884-9551  
sales@korndoerferhomes.com

