



BAESSLER
HOMES

WELBY

605



FARMHOUSE - A

*Elevations may vary by community



CRAFTSMAN- B



TRANSITIONAL - C

TWO STORY
3-4 BEDS - 2 ½ BATHS
1,907 SQUARE FEET

The Welby plan breathes with an open concept layout. The expansive kitchen offers circulation which makes it an exceptional choice for entertaining. This two-story home has plenty of separation between public and private spaces. An expansive master suite with walk through closets leads you to an ensuite with dual sinks and a large shower, with the option of a freestanding tub, it feels like paradise.

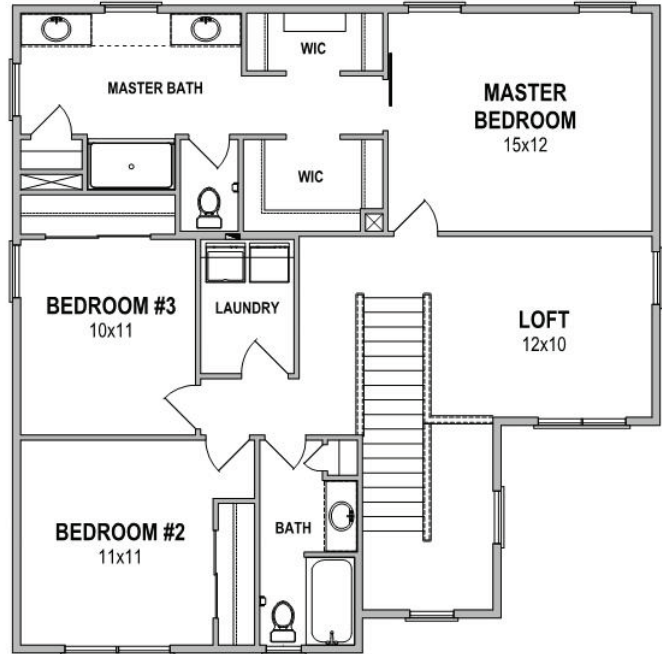
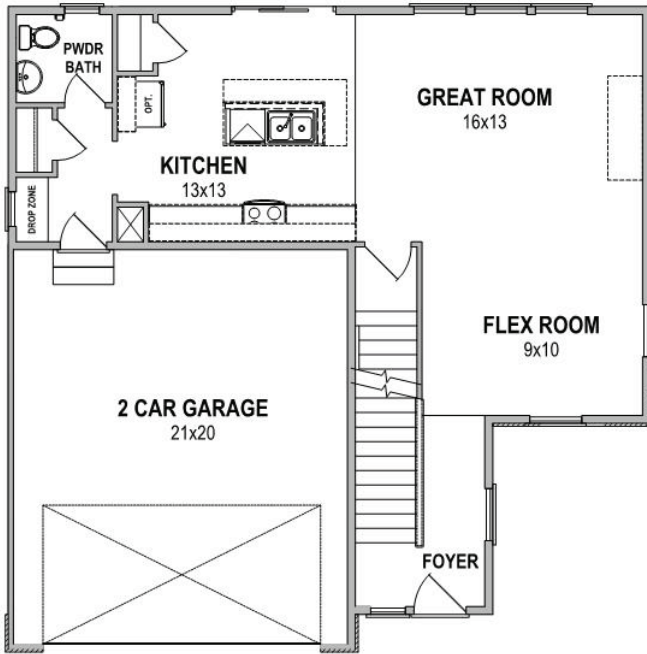
WWW.BAESSLERHOMES.COM - 970-616-6610



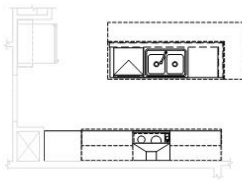
Builder reserves the right to modify or change floor plans, features, and pricing without notice. All floor plans and renderings are conceptual in nature and may vary from actual homes. Square footages are approximate and may vary. Not all options and elevations offered in every community. 060120



WELBY



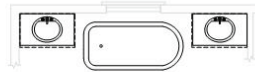
OPT. CHEF'S KITCHEN



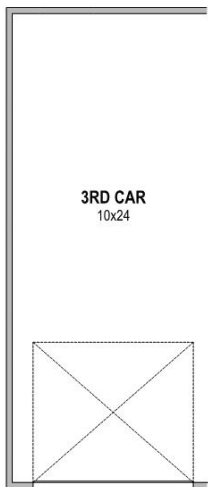
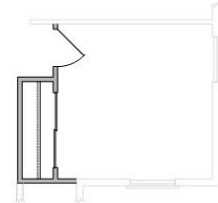
OPT. OFFICE



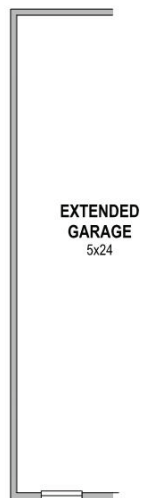
OPT. 5 PIECE MASTER BATH



OPT. BEDROOM #4



OPT. 3RD CAR GARAGE



OPT. EXTENDED GARAGE



OPT. FIREPLACE

TOTAL FINISHED - 1,907 SQ.FT.
 FULL UNFINISHED BASEMENT - 695 SQ. FT.
 MAX TOTAL - 2,602 SQ.FT.

OPTIONAL:

- EXTENDED BACK PATIO
- COVERED BACK PATIO
- 1/2 CAR BUMPOUT
- 4TH BEDROOM
- GARAGE SERVICE DOOR
- 5 PIECE MASTER BATH
- FIREPLACE
- 3 CAR GARAGE
- CHEF'S KITCHEN
- STUDY
- BENCH

CEILING DETAILS:

- 9' FLAT ON MAIN LEVEL, 8' UPSTAIRS

SEE YOUR COMMUNITY SALES MANAGER
 FOR ALL HOME PLAN OPTIONS



WWW.BAESSLERHOMES.COM - 970-616-6610

Builder reserves the right to modify or change floor plans, features, and pricing without notice. All floor plans and renderings are conceptual in nature and may vary from actual homes. Square footages are approximate and may vary. Not all options and elevations offered in every community. 060120

