

The Jackson



SCAN THE QR CODE
TO LEARN MORE!

6717 Mayland Ridge Lane | Lot 68



3 Beds



2.5 Baths



2-Car Garage



2,885 sq ft



\$551,922

Features | Under Construction

- Interior-Unit Townhome
- First-Floor Primary Suite
- Quartz Countertops
- GE Appliances
- Sunroom

Horizontal Siding
Board & Batten
Garage Door

Steel Blue

Roof

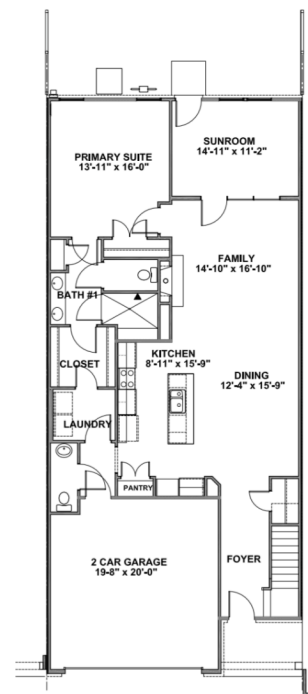
Charcoal

Brick

Pine Hall Brick
"French Manor"

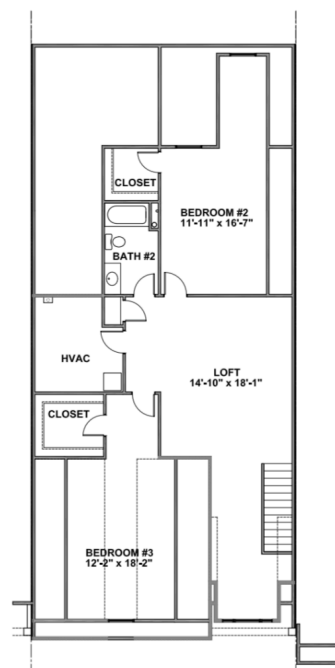
Front Door

Rare Gray



First Floor

Second Floor



Boone Homes

CONTACT:

Dexter Radcliffe & Kayla Keihn
(804) 481-9386



Selections

**All Selections Are Subject to Change*

Boone Homes

Kitchen



KITCHEN FAUCET:
Kohler Simplice Pull-Down
Vibrant Stainless



PENDANTS (X2)

CABINETS
Brellin White



Backsplash
3x12 Flow Tender
Gray



COUNTERTOPS
Mia Pentel Quartz



**CABINET
HARDWARE**

GE Appliances

Dishwasher, Microwave,
Gas Convection Range



Flooring



REVWOOD SELECT
Foyer, Dining Room,
Kitchen/Pantry, Family Room,
First Floor Halls, Powder Bath,
Hallway Off Garage, Primary
Suite/Closet, Loft/2nd Floor
Hallways
Color: Warm Cashmere Oak



CARPET* (8LB PAD)
Bedroom #2/Closet,
Bedroom #3/Closet
Color: Bird Bath

Lighting

DINING



FOYER



BEDROOM #2



Bathroom #2



LIGHTING



PLUMBING
Kohler Simplice Series
Polished Chrome



FLOOR TILE
AB03 12x12
Nimbus Abound



CABINETS
Elkins White
Raised Height
Cultured Marble Tops
Large Oval Bowls

Primary Bath

LIGHTING (X2)



WALL TILE
ML70 12x12 Bianco
Carrara Mirasol by
American Olean



SHOWER FLOOR
Calacatta 2" Hexagon
Mos. Matte Mosaic

FLOOR TILE
ML70 12x12 Bianco
Carrara Mirasol by
American Olean



PLUMBING
Kohler Simplice
Vibrant Brushed Nickel



Kohler Awaken
Vibrant Brushed Nickel



CABINETS

Benton Quill,
Pure White Cultured
Marble Top w/
Large Oval Bowls

