

REECE HOMES

7041 SKIPPING ROCK PATH



STELLA RANCH NEIGHBORHOOD

4 BDRM | 3 BATH | 3000 SF

The Landry is thoughtfully crafted to bring comfort, style, and smart design together under one roof. This spacious home features a second-floor game room, a signature Reece Homes mudroom, and a convenient butler's pantry—ideal for entertaining and everyday living. At the heart of the home, a generous eat-in island overlooks the open-concept living area, perfectly framed by large windows that bring in natural light and views of the backyard. The private master suite offers a serene escape with a garden tub, a separate walk-in shower, and carefully curated design elements that make every day feel like a retreat.

Where function meets flow and beautiful design enhances everyday life,
The Landry is the perfect place to call home.

FEATURES:

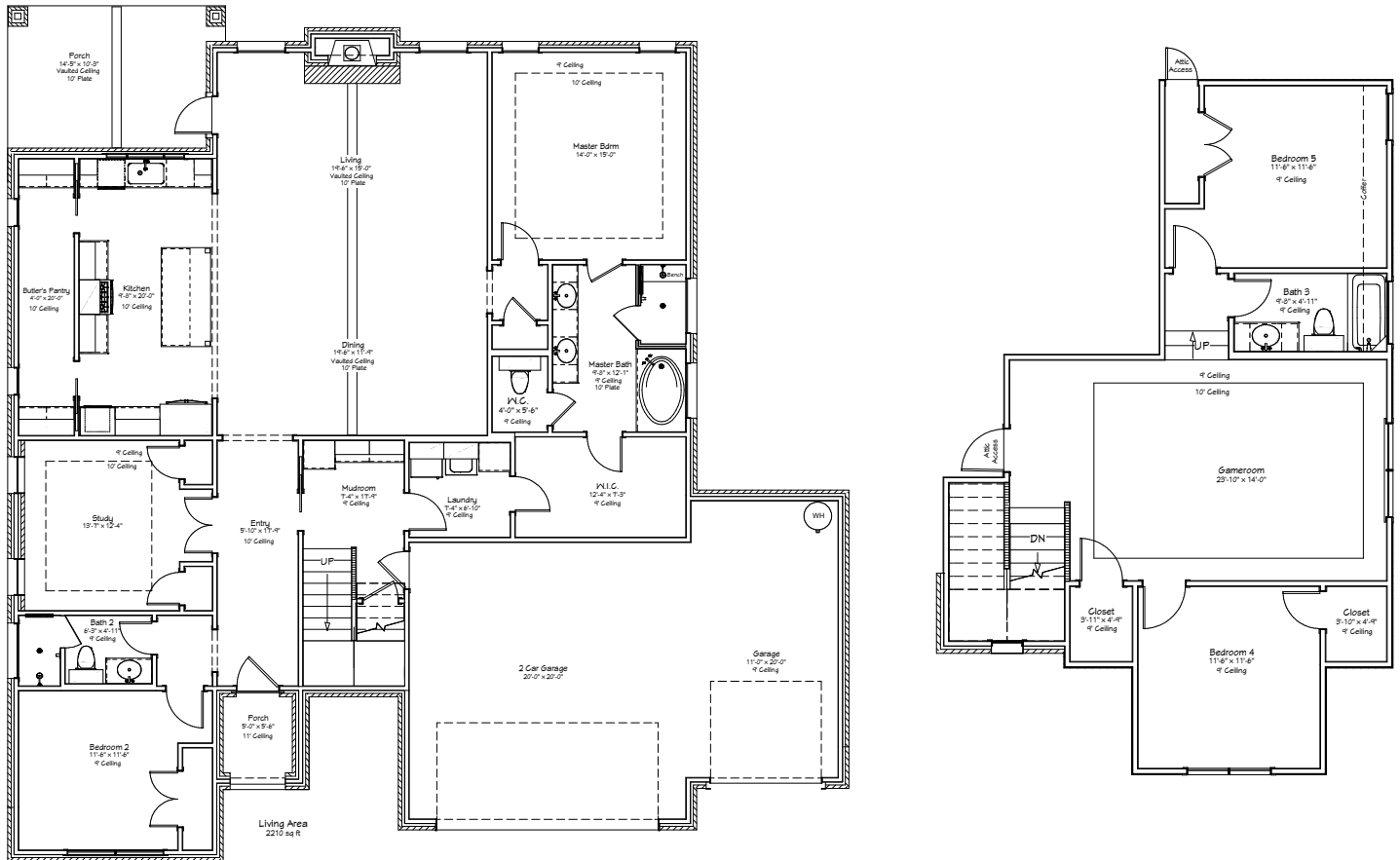
Custom Cabinetry | Quartz & Granite Countertops | Vaulted Ceiling
Wood-Look Tile Flooring | Stainless Appliances

COME MAKE OUR HOUSE, YOUR HOME



Reece Homes
979-635-4800
info@reece-homes.com

7041 SKIPPING ROCK PATH



4 BDRM | 3 BATH | 3000 SF

WWW.REECE-HOMES.COM



BUILT THE WAY WE LIVE | At Reece Homes we take great care in personalizing every home to meet each family right where they are. Truly unique, the Reece Homes building experience provides in house drafting, personalized design assistance, and constant communication throughout construction.