

# DESIGN

## SWEENY - 4455F



Modern Tudor



Tudor Revival



French Eclectic



Farmhouse



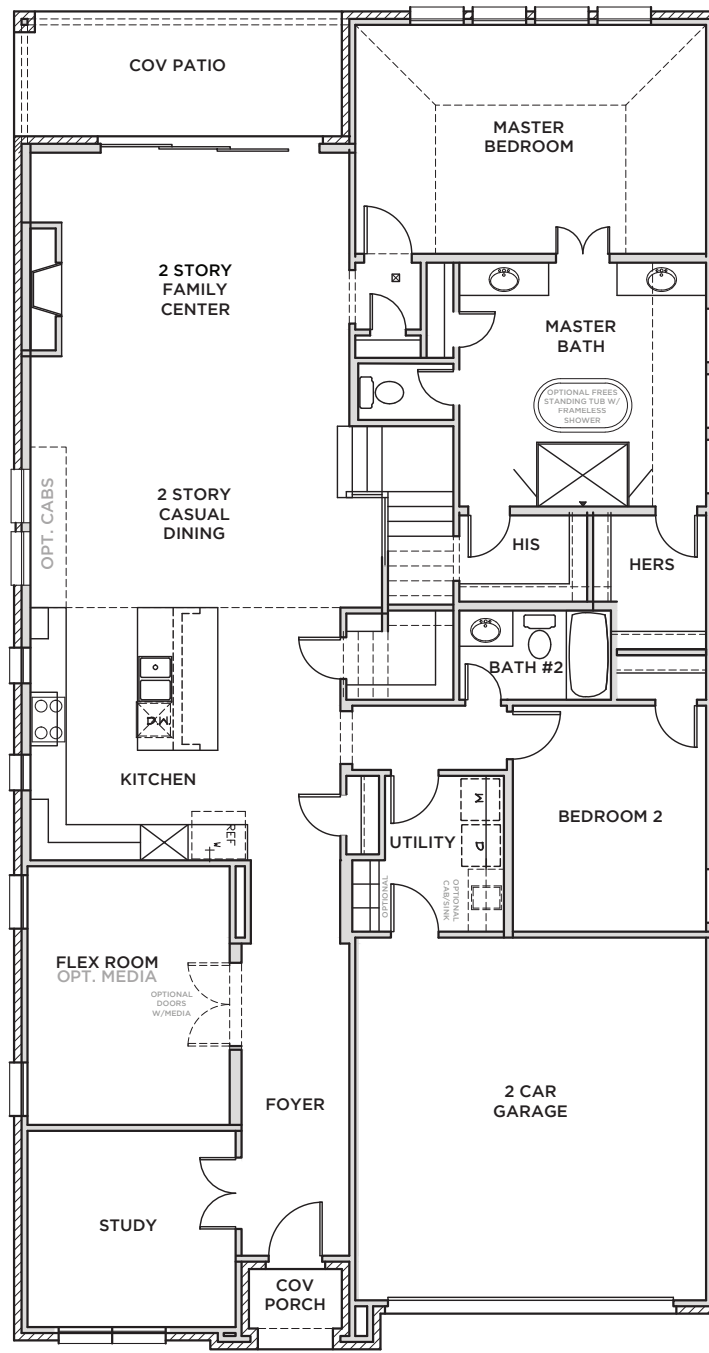
Modern Farmhouse



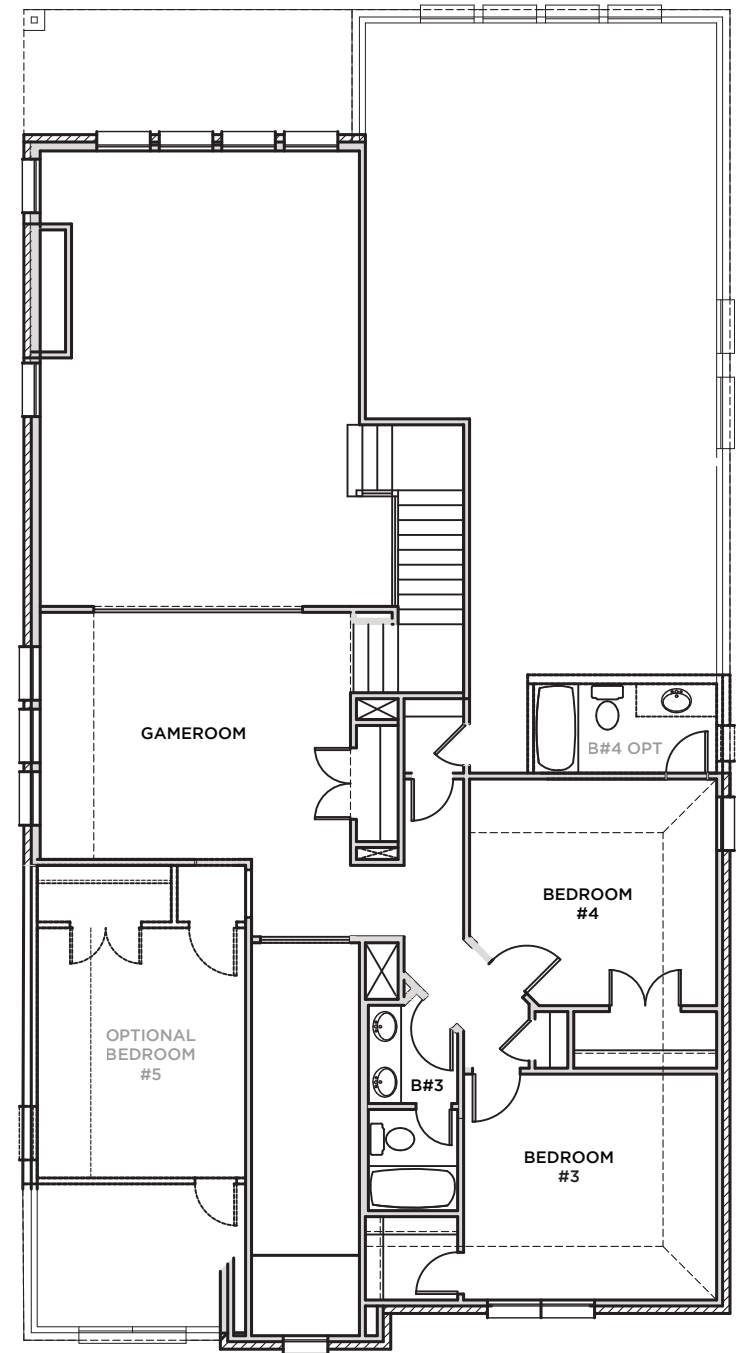
Craftsman



All Product including Architectural Designs, ©2000-2025, Shaddock Homes, LTD., All rights reserved. There may be existing or future design changes made in the floorplans, building products, methods, square footage, or designs used in our homes that are not reflected in our information, sales center or in our models. The materials, designs, square footages, features, and amenities shown are based upon current development plans, which are subject to change without notice. No guarantee is made that the designs, square footages, materials, features, and amenities depicted by artist's renderings or otherwise described will be built, or if built, will be of the same type, size or nature as depicted or described. All stone elevations, metal roofs, cast stone door and window headers and solid sawn cedar posts are optional, but available via change order. Front doors will match the specification sheet or chosen door upgrade. Prices and terms subject to change without notice. REVISION DATE: 7.13.2022



FIRST FLOOR



SECOND FLOOR

## SWEENY 4455P\* (7/13.22)

First Floor	S.FT 2334
Second Floor	953
<b>Total Living Area</b>	<b>3287</b>
2 Car Garage	434
Entry	32
Covered Patio	126
Total Area	3669

<b>Options</b>	
Bed 5	234
Bath 4	58

SHADDOCK HOMES