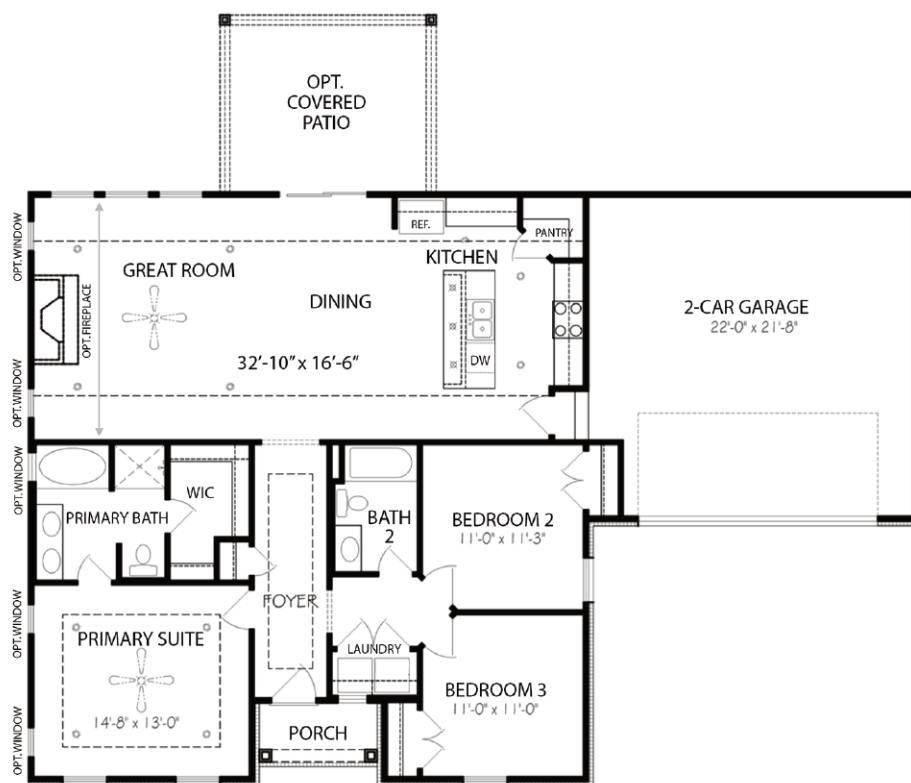


GX Linden Approx 2,214 Living Sq. Ft.*



Elevation may vary per builder homesite



3 Bedrooms, 2 Baths & 2-Car Garage

| APPROX. AREA | |
|-------------------|-------|
| FIRST LEVEL | 1,488 |
| TOTAL LIVING AREA | 1,488 |
| FRONT PORCH | 38 |
| REAR PORCH | 189 |
| GARAGE | 499 |
| TOTAL COVERED | 2,214 |

For More Information Contact:

Regent
HOMES
Offered By Regent Realty
www.RegentHomesTN.com

*Room dimensions and square footage are approximate and may vary per builder homesite.

In the interest of continuous improvement, Regent Homes reserves the right to make modifications in exterior designs, architectural details, materials and specifications at any time without prior notice. All features, designs, and prices are subject to change without prior notice. The above illustration is for demonstration purposes only. Elevation may vary per builder homesite. Please consult working drawings for actual dimensions and information. ©2022 Regent Homes LLC.

All homes built by Regent Homes are built in planned communities that contain deed restrictions, use restrictions and maintenance fees. Please consult your sales representative to obtain an official copy of the deed restrictions.

