

# The Waterford Traditional




Driveway & Landscaping not included.  
Not actual home, but similar plan.

**\$769,900\***

**April Occupancy**

Talbot's Woods (Lot 55)  
436 Ingleside Court  
Dousman, WI 53066

-  3 Bedrooms
-  2 Bathrooms
-  2,306 SF
-  3 Car Garage

**Directions:** I-94 exit Hwy 67. South on Hwy 67.  
Left on Hwy 18. Right on W Talbot's Woods Drive into  
neighborhood.

\*Price subject to change without notice.



## KITCHEN FEATURES

- Designer kitchen with staggered maple cabinets with crown molding, soft close doors/drawers, undercabinet lighting & built-in look refrigerator surround
- Quartz countertops, tile backsplash, & large island w/ flush snack bar
- Large corner pantry with melamine shelving
- GE® kitchen appliance package w/built-in microwave, dishwasher, slide-in gas range, chimney hood & French door refrigerator in slate finish

## MAIN LEVEL FEATURES

- Mohawk® luxury vinyl plank flooring in kitchen, nook, great room, office, foyer, mudroom, laundry room, mudroom, bath 2 & hallways
- 10' ceiling height at great room, office & foyer
- Gas fireplace w/ stacked stone & tall shelf-style mantel w/ returns
- Office w/ double doors
- Bath 2 w/ tiled walls to ceiling over tub/shower
- Built-in boot bench in mudroom
- Laundry room w/ cabinets, countertop/folding table, & linen closet
- Wood casing & jamb at windows & patio door
- Hall linen closet
- Solid core doors & melamine shelving throughout
- 5¼ base & 3 ½ casing

## MASTER SUITE FEATURES

- Box up ceiling at bedroom
- His & hers vanities w/ drawers in between
- Walk-in tiled to ceiling shower w/swing glass door & wall-to-wall tile shelf
- Tile flooring
- Separate commode room
- Linen closet

## ADDITIONAL FEATURES

- Finished basement staircase
- Future basement bathroom plumbing rough in
- Egress window
- 3' bedroom side bump out & 3'x14' nook bump out
- Fibercement siding, trim, corner boards & wraps
- Drywalled & insulated garage w/ ultra quiet door openers
- Active radon mitigation system
- 2x6 Construction
- Pella® Windows
- Moen® Faucets & Kohler® Toilets
- Dura Supreme® Cabinets
- Maxim® Light Fixtures
- Builder Warranty Included
- Focus on Energy Certified

Floor Plan on Other Side →

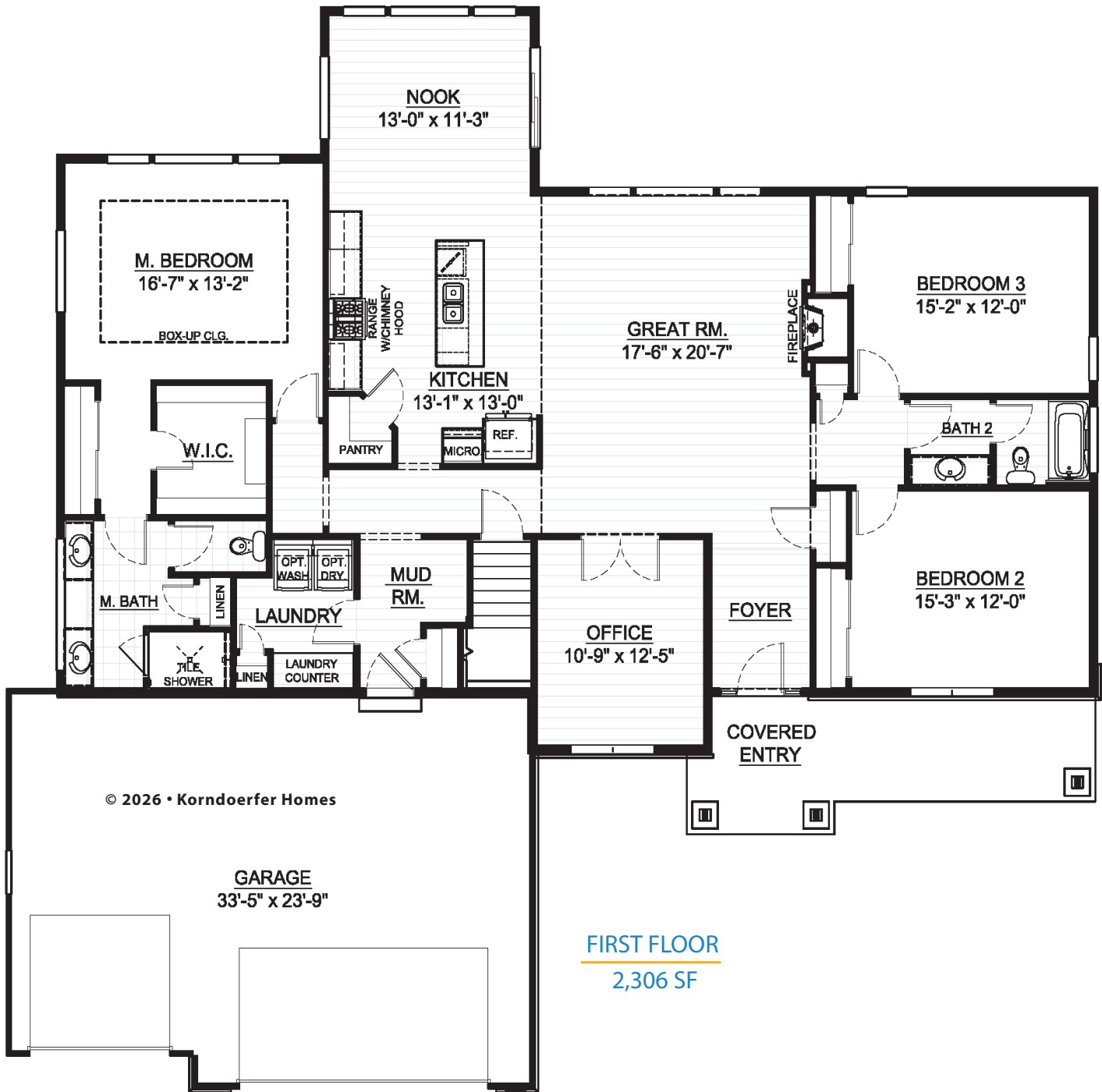


### ASK RYAN!

Online Sales Consultant  
262-884-9551  
sales@korndoerferhomes.com



# The Waterford Traditional Floor Plan



## ASK RYAN!

Online Sales Consultant  
262-884-9551  
sales@korndoerferhomes.com

