



2078 Hidden Bluff



CALIBER HOMES

CHARACTER REDEFINED



ELEVATION "B"

THE LINCOLN

PROPERTY FEATURES:



4 Bedroom



3.5 Bathroom



3 Car



3986 Sq Ft



Full Foam Insulation

ABOUT: "HERE IN MY HEART, MY HAPPINESS, MY HOUSE." -ABRAHAM LINCOLN

A showcase of exceptional design and enduring quality, the Lincoln offers 3,986 square feet of perfectly balanced living. This spacious layout features a grand family room that flows seamlessly into an open kitchen and breakfast area — ideal for gathering and entertaining. The private owner's retreat includes a spa-inspired bath and generous walk-in closet, while the study, game room, and large covered patio add versatility for work and play. With four bedrooms, three and a half baths, and a three-car garage with workshop space, the Lincoln embodies Caliber Homes' commitment to comfort, function, and timeless craftsmanship.

CONTACT DETAILS:



817-360-0249



sales@caliberhomestx.com



www.caliberhomestx.com

All plans and elevations are subject to change without prior notice. All Caliber Homes floor plans & elevations are copyrighted. Caliber Homes will enforce copyright laws to their fullest extent. All plan numbers are approximations of square footage and may vary with alternate elevations.

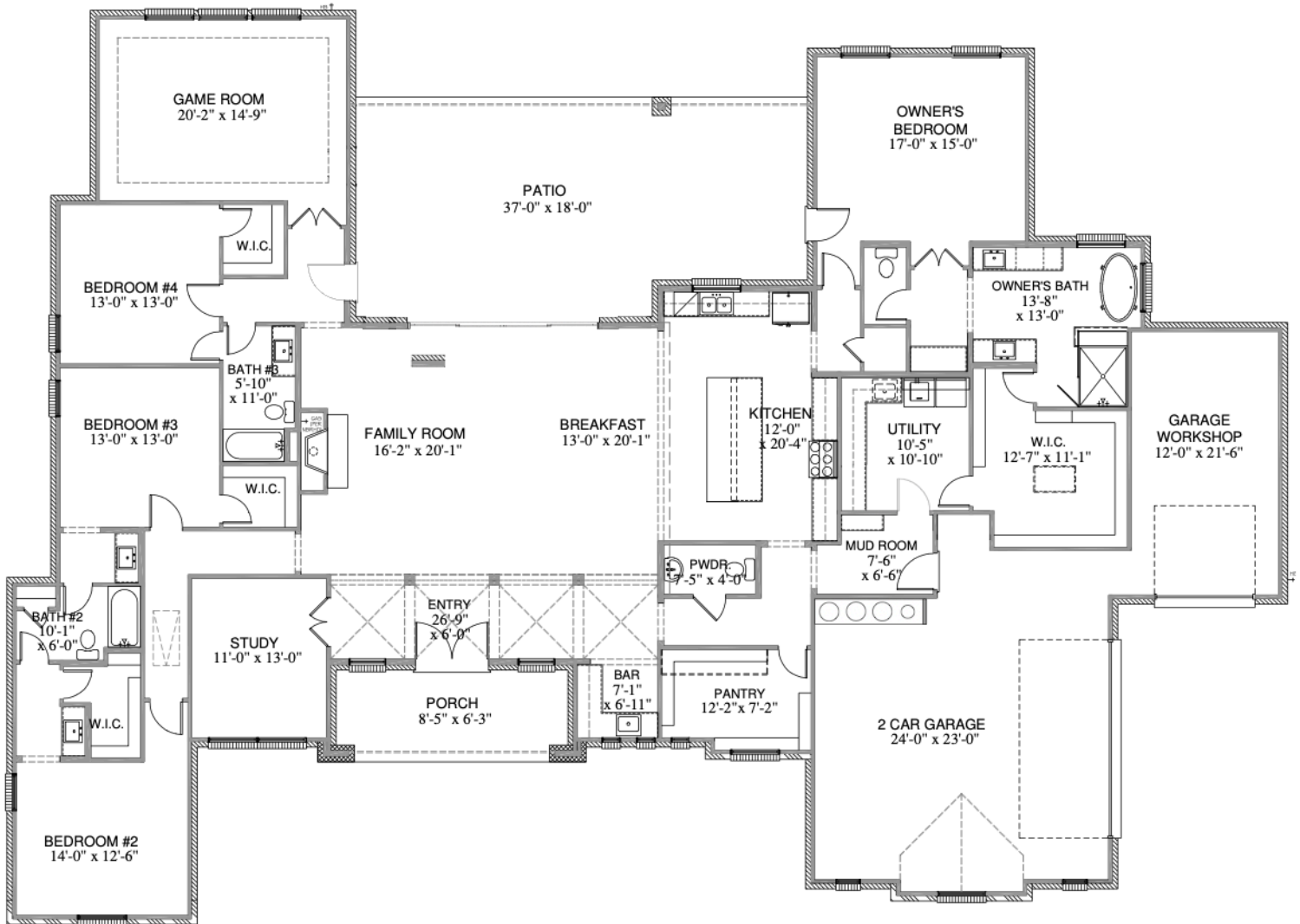
Please note: In an effort to continually improve our floor plans and elevations, Caliber Homes reserves the right to make alterations to the designs without prior notice.



CALIBER HOMES

CHARACTER REDEFINED

3986 SQ. FT. THE LINCOLN



SQUARE FOOTAGE TOTALS

3986	1ST FLOOR
0	2ND FLOOR
774	COVERED PORCHES
982	GARAGE
5742	TOTAL A.U.R.

All plans and elevations are subject to change without prior notice. All Caliber Homes floor plans & elevations are copyrighted. Caliber Homes will enforce copyright laws to their fullest extent. All plan numbers are approximations of square footage and may vary with alternate elevations.

Please note: In an effort to continually improve our floor plans and elevations, Caliber Homes reserves the right to make alterations to the designs without prior notice.