

# REECE HOMES

5665 MILL WATER COURT



WINDMILL HILL NEIGHBORHOOD

4 BDRM | 3 1/2 BATH | 2875 SF

Introducing the newest addition to the Reece Homes family of plans, The “Sophie.” The beautifully designed open concept living area is the perfect place to entertain. With double doors on each side of the fireplace opening out to the covered patio, this home is fully functional for any family. The “Sophie” features a flex room, study, and Reece Homes’ signature mudroom. A beautiful kitchen with a large island and separate dining area all expand the feel of this plan. A restful master suite featuring a walk-in shower and garden tub and lovely custom finish out the home.

#### FEATURES:

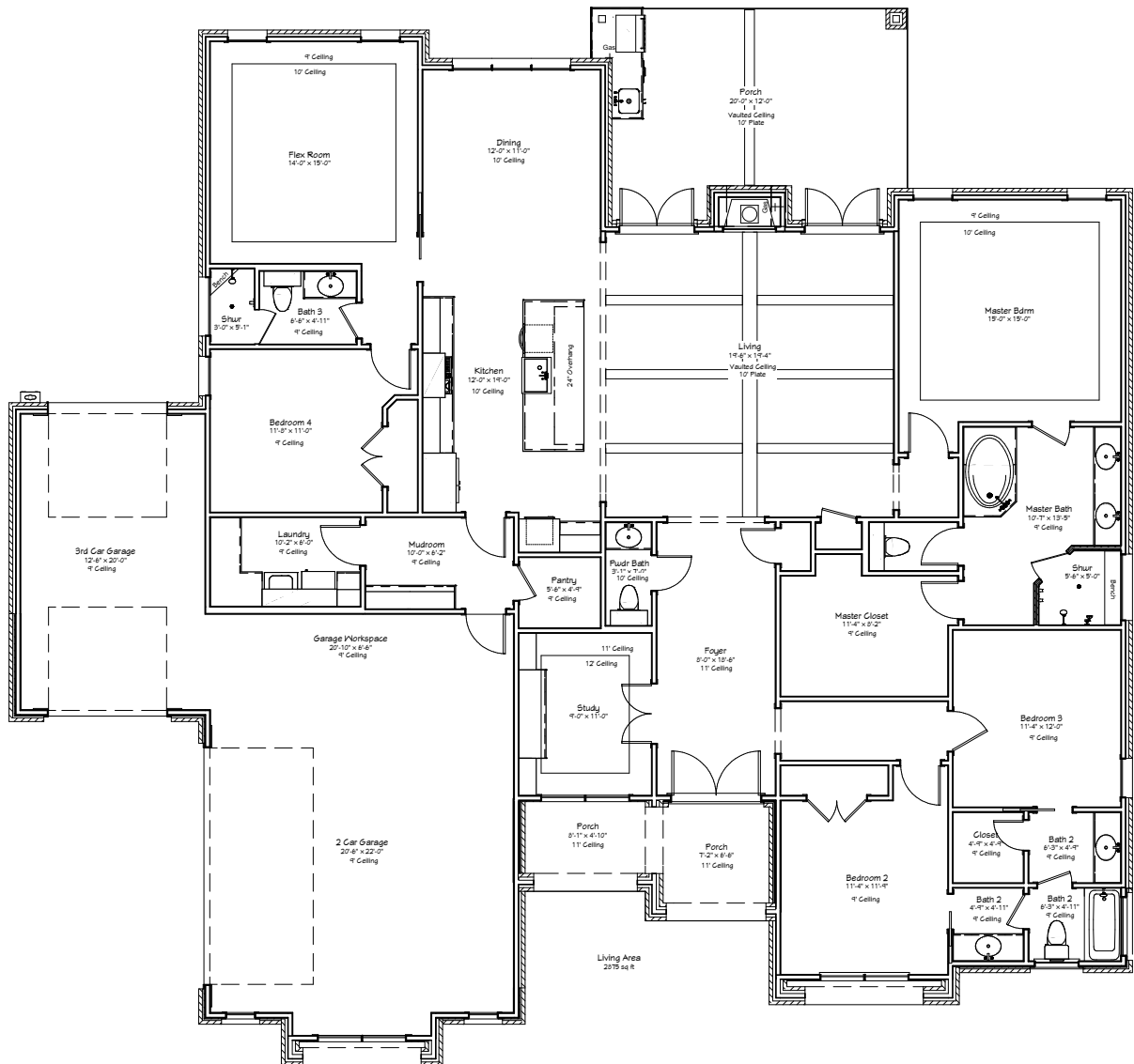
Custom Cabinetry | Quartzite, Quartz & Granite Countertops  
Hardwood Flooring | Stainless Appliances | Custom Design Elements

Come Make Our House, Your Home.



Reece Homes  
979-635-4800  
info@reece-homes.com

## 5665 MILL WATER COURT



4 BDRM | 3 1/2 BATH | 2875 SF

**Built the way we live |** At Reece Homes we take great care in personalizing every home to meet each family right where they are. Truly unique, the Reece Homes building experience provides in house drafting, personalized design assistance, and constant communication throughout construction.

[WWW.REECE-HOMES.COM](http://WWW.REECE-HOMES.COM)