

Ashworth VI



Elevation A



Elevation B



Elevation C



Elevation D



Elevation E



Elevation F



Elevation G



Elevation H

Ashworth VI Features

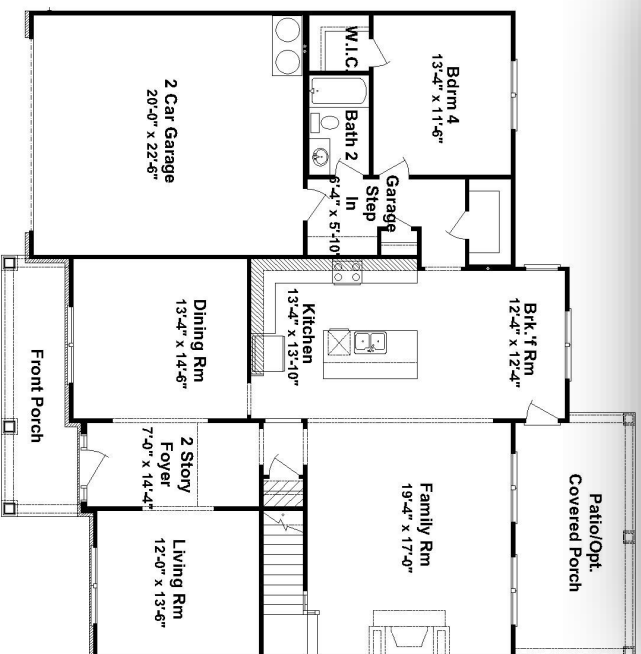
- 4 to 5 Bedrooms
- 3 to 5 Baths
- Sitting Room off Master
- Formal Living Room Or Study



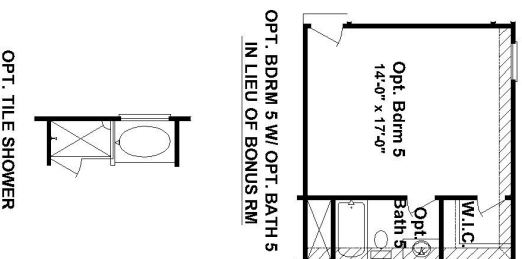


We Build a Better Home

"Window grid patterns may vary. Standard window grid pattern on all elevations will be 2 over 1 unless buyer chooses another available grid pattern with an additional investment."

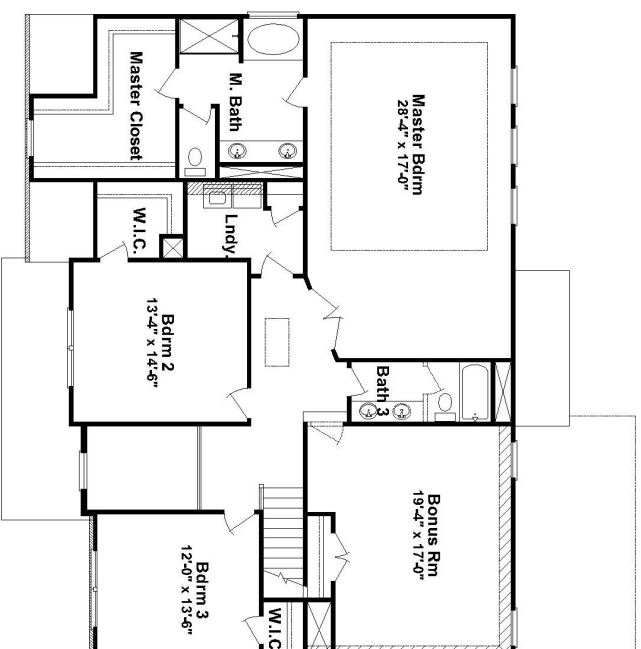


FIRST FLOOR PLAN

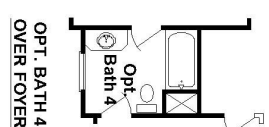


OPT. BDRM 5 W/ OPT. BATH 5
IN LIEU OF BONUS RM

OPT. TILE SHOWER



SECOND FLOOR PLAN



OPT. BATH 4
OVER FOYER

3512 ASHWORTH VI

FLOOR PLANS AND ELEVATIONS ARE SUBJECT TO CHANGE.
DIMENSIONS ARE APPROXIMATE. FOR MORE INFORMATION,
PLEASE CONTACT US. WORKING DRAWINGS FOR ACTUAL DIMENSIONS AND
CONSTRUCTION INFORMATION, ELEVATIONS/PERMITS ARE ARTIST
CONCEPTS.

Ivey Homes:

672 Industrial Park Drive, Suite 200

Evans, GA 30809

706.868.9363

3512 Square Feet

Actual construction may vary from plan shown. Please consult working drawings to view elevation and floor plan to be built. Copyrighted 2019 by Ivey Residential, LLC