

# Sloan III

Approx 2,125 Living Sq. Ft.\*

**3 Bedrooms, 2 Baths,  
Bonus Room & 2-Car Garage**

APPROX. AREA	
FIRST LEVEL	1,849
SECOND LEVEL	276
TOTAL LIVING AREA	2,125
PORCHES	481
GARAGE	544
TOTAL COVERED	3,151



**Regent**  
HOMES

Offered By Regent Realty

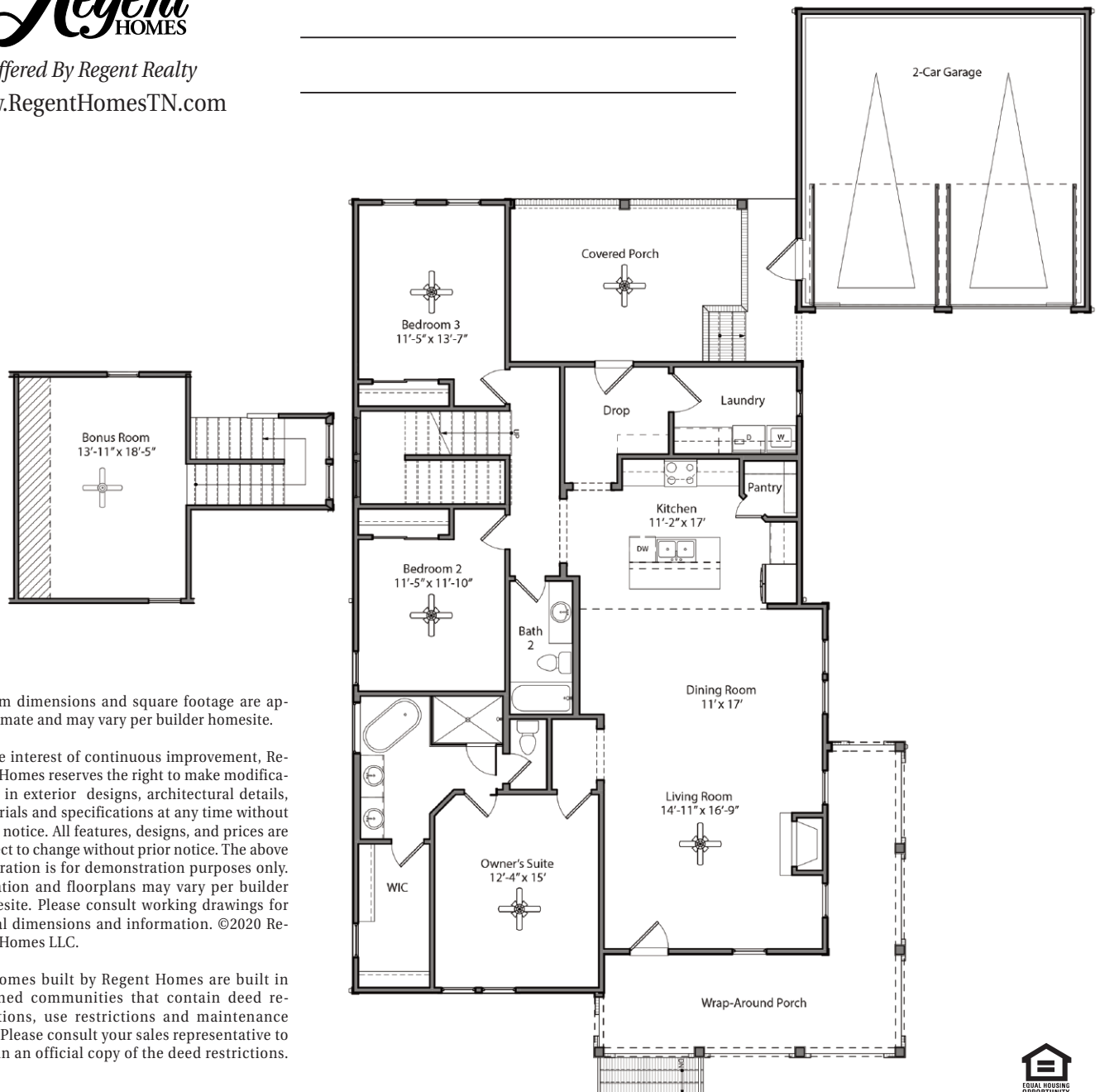
www.RegentHomesTN.com

For More Information Contact:

---



---



\*Room dimensions and square footage are approximate and may vary per builder homesite.

In the interest of continuous improvement, Regent Homes reserves the right to make modifications in exterior designs, architectural details, materials and specifications at any time without prior notice. All features, designs, and prices are subject to change without prior notice. The above illustration is for demonstration purposes only. Elevation and floorplans may vary per builder homesite. Please consult working drawings for actual dimensions and information. ©2020 Regent Homes LLC.

All homes built by Regent Homes are built in planned communities that contain deed restrictions, use restrictions and maintenance fees. Please consult your sales representative to obtain an official copy of the deed restrictions.

