



Modern Farmhouse



Craftsman

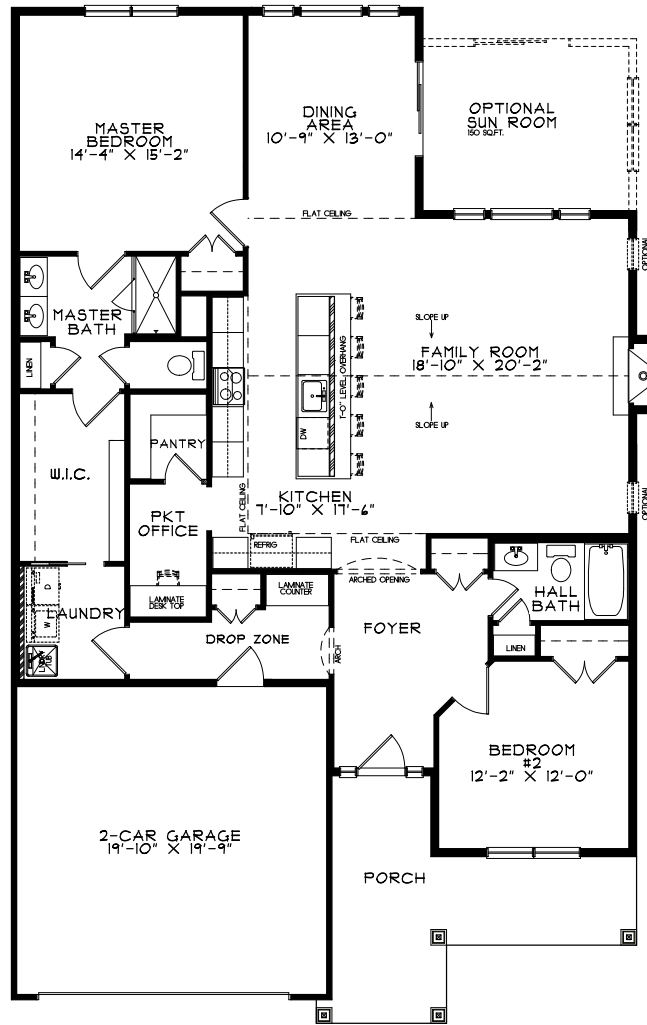


Traditional

All floor plans and renderings shown are artist's renditions, are subject to change without notice, and may show upgrades or optional features not included as standard. Please consult Sales Manager for details. All dimensions are approximate and subject to field variations. Builder not responsible for printer's errors and/or omissions. © Kay Builders 2026

# FOXGROVE I - LW

1,742 SQFT



FIRST FLOOR

**Floor Plan shown is of Modern Farmhouse elevation. Optional Basement is available.**

Plans and Sqft. may differ between Craftsman, Modern Farmhouse, and Traditional elevations.  
Consult with Sales Manager for full plans and optional details.