



Elevation C with Stone



Elevation B with Stone



Plan C660

FLOORPLAN

FLOORPLAN

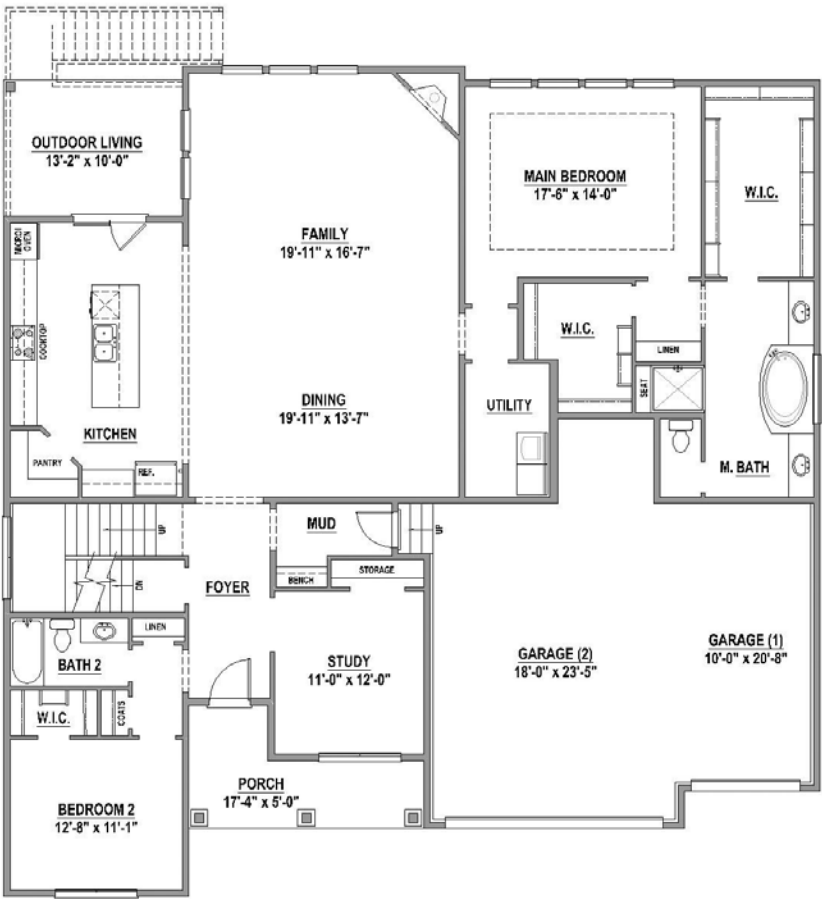
Plan C660
Elevation A with Manufactured Veneer



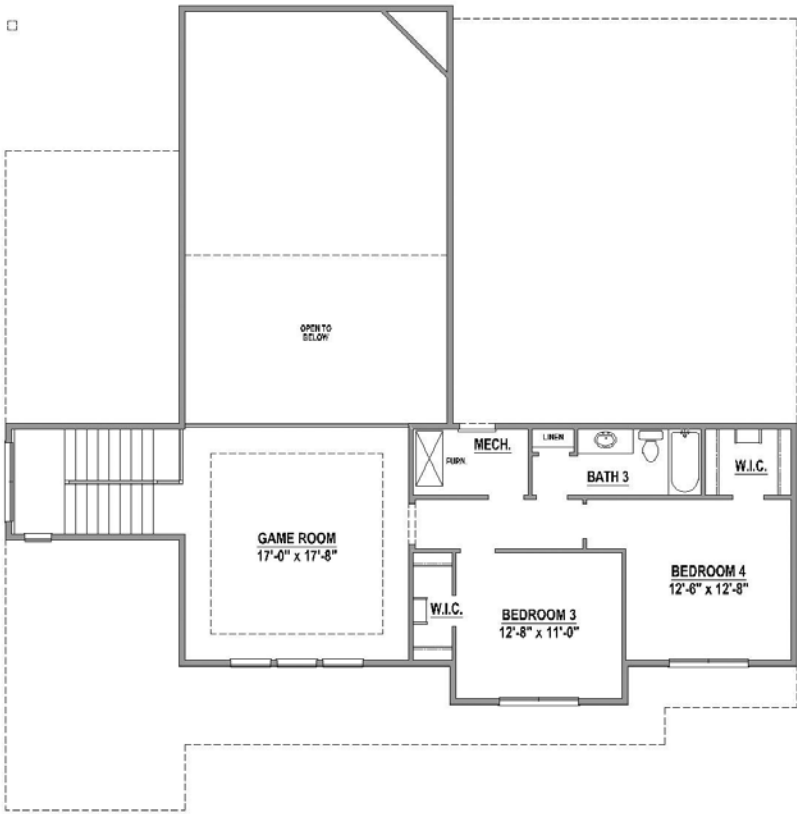
PLAN C660

3, 237 SF

First Floor

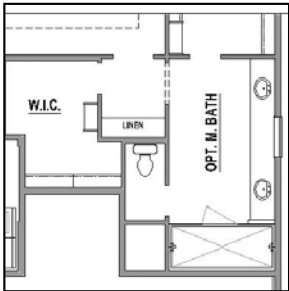


Second Floor

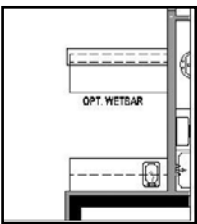


Features:

- 2 Story
- 4 Bedrooms
- 3 Full Baths
- 1 Powder Bath
- Study
- Tech Center
- 3-Car Garage



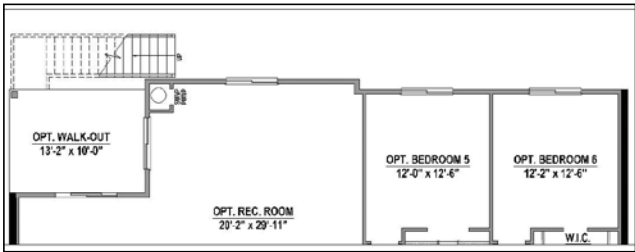
Optional Main Bath



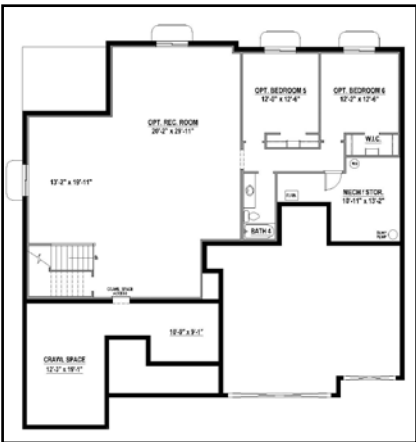
Optional Wet Bar



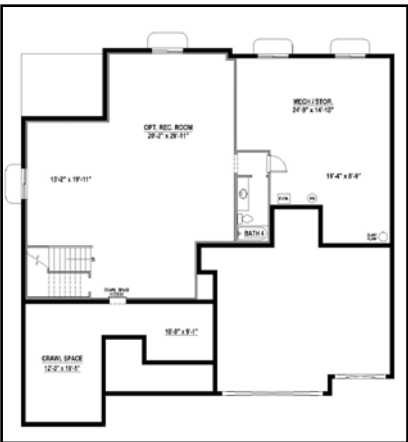
Optional Multi-Sliding Door



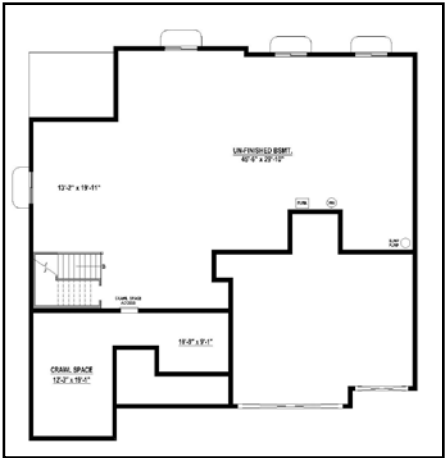
Optional Basement Walk-Out



Optional Rec Room with Bedroom 5 & 6 with Full Bath 4 (1,969 SF)



Optional Rec Room with Full Bath 4 (1,333 SF)



Unfinished Basement-Standard

Projected HERS Score

56

Your home's HERS score is a projected score based on plans. The lower the number, the more energy efficient the home. To learn more, visit www.hersindex.com

Annual Savings

\$2,662

*Relative to an average U.S. Home

*This information is presented for education purposes only. The HERS index for a confirmed rating will be determined by a third party HERS rater based on data gathered from on-site observations and, if required, testing of rated features for a home as featured, opinionated, oriented, and/or built.
+Standard new home is based on the RESNET Reference Home definition with a HERS index of 100 (based on the 2006 International Energy Conservation Code)
++Typical resale home is based on the U.S. Department of Energy definition with a HERS index of 130.