

THE BELLISIMO SERIES - CRESTWOOD CROSSING

BELLA VISTA

Three Story | 3 Bedrooms | 3 Full Baths | 1 Half Bath



Traditional



Provincial



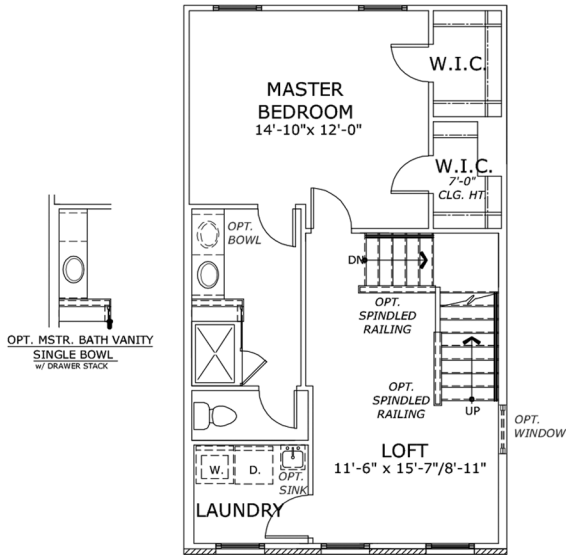
Classic



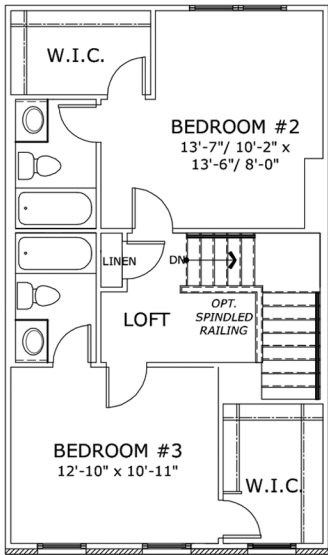
Renaissance



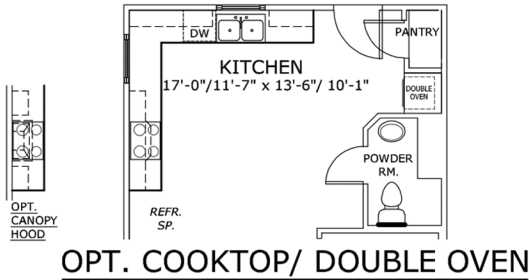
Victorian



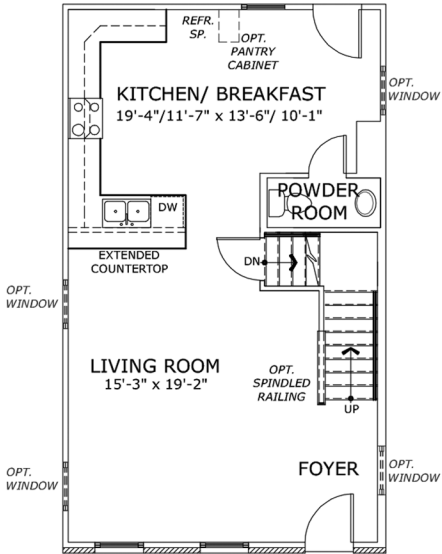
SECOND FLOOR PLAN



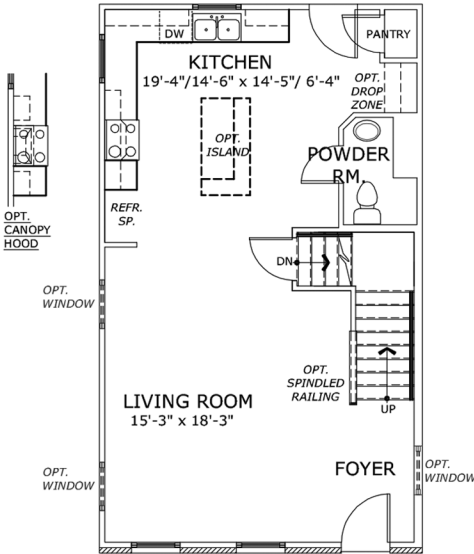
THIRD FLOOR PLAN



OPT. COOKTOP/ DOUBLE OVEN



FIRST FLOOR PLAN



OPT. FIRST FLOOR PLAN

BUILT BY MCBRIDE & SON HOMES, INC.
 * Due to the evolutionary changes in our design improvements process, there may be variations between these plans and the "as built" floor plans, including layout and room sizes, square footage of the residence itself, and the location and size of doors, windows, openings, door swings, and other building components, including the location of posts and beams.
 McBride & Son Homes, in its sole and absolute discretion, reserves the right to substitute materials of comparable quality.

