



Lot#: TR-50 MLS#: 776912 Plan: Sierra Bedrooms: 3 Baths: 2.5 Total Sqft: 2,469

Exterior:

- Two-Car Garage
- Modern Farmhouse Exterior
- 12' x 12' Pressure-Treated Deck
- Walk-Out Basement

Gourmet Kitchen:

- Stainless Steel Appliances
- Exterior Vented Microwave
- Island with Level Overhang
- Additional Recessed Lights
- Adjacent Breakfast Nook with Sliding Door Deck Access

Interior Features & Plan Highlights:

- Open Foyer
- Separate Dining Room
- 2-Story Great Room with Fireplace
- 1st Floor Flex Space / Study
- Engineered Hardwood Flooring throughout most of 1st Floor
- Prewire for Ceiling Fans in Bedrooms
- Additional Recessed Lights in Great Room
- Large 2nd Floor Loft / Flex Space
- Rough-in for Full Bathroom in Basement

Luxurious Owner's Suite:

- Private Location on 2nd Floor
- Large Walk-In Closet
- Double Vanity
- Corner Soaking Tub
- Spacious Glass-Enclosed Shower



Schedule Your Appointment Today!

Sandy Sekerak, Sales Manager | 610-928-0555 | SandyS@KayBuilders.com

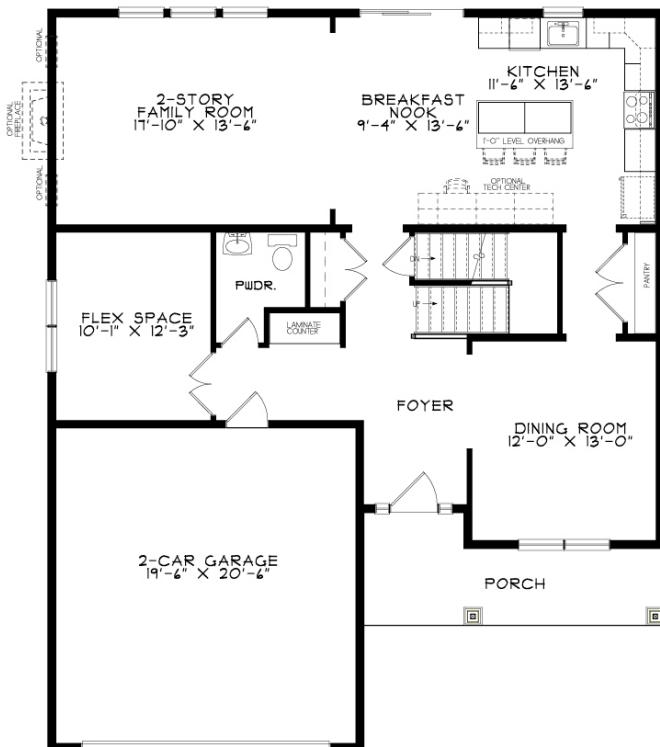
THE FIELDS AT TWIN RUN

Community Features:

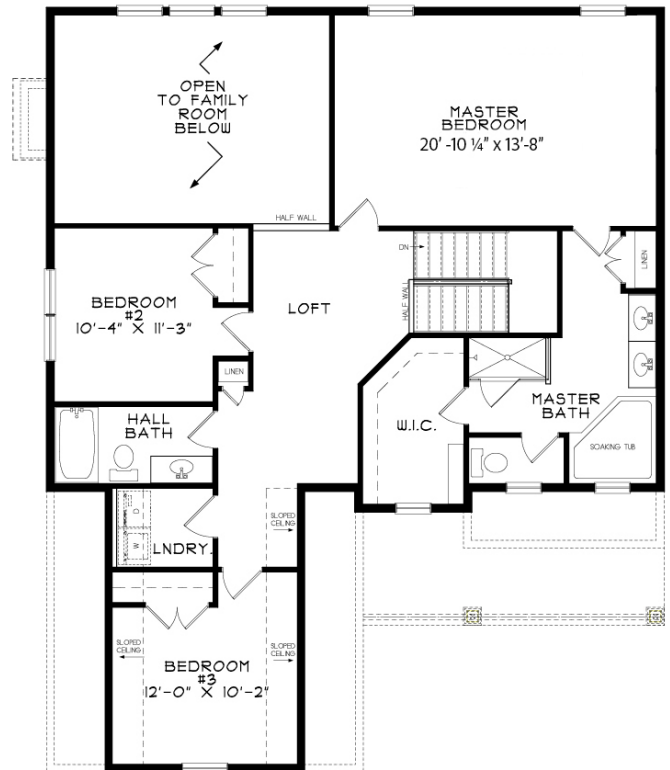
- Located in Highly-Rated East Penn School District
- Walking Path and Community Open Space
- Superior Curb Appeal & Unique Home Pairings
- Convenient location close to Healthcare, Shops, Dining, Downtown Emmaus, Recreation Areas, & Much More!

3643 Samantha Lane | Macungie, PA 18062

Floor Plan: Sierra



FIRST FLOOR



SECOND FLOOR

Floor Plan for TR 50 has been customized. Please see Sales Manager for details and full set of plans.

Schedule Your Appointment Today!

Sandy Sekerak, Sales Manager | 610-928-0555 | SandyS@KayBuilders.com