

The Shiloh Sales Brochure



Handicap accessible floor plans are available by request. Please talk with your agent to find out more.

NOTE: PRICES, SPECIFICATIONS, AND DIMENSIONS ARE APPROXIMATE AND SUBJECT TO CHANGE WITHOUT NOTICE.

NOTES: All dimensions are approximate and subject to change without notice

DATE:
6/14/2026

SCALE:

NTS

SHEET:

The Shiloh
Sales Brochure
Advantage Series



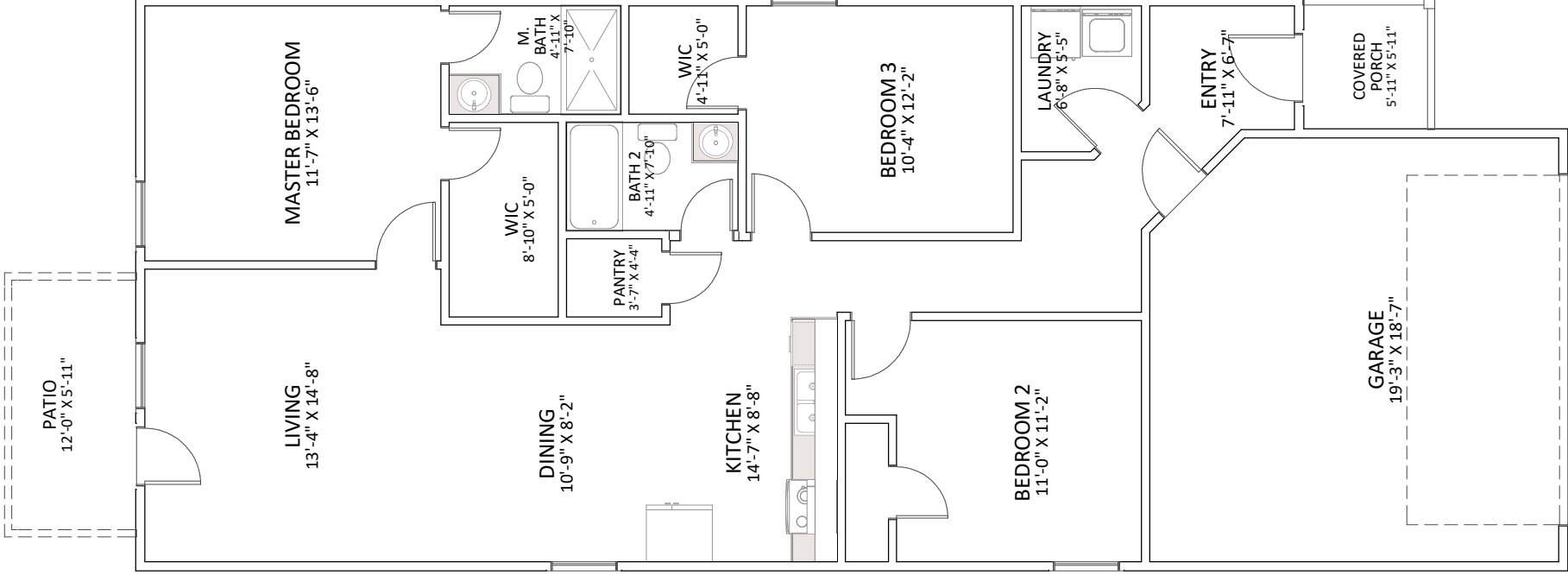
**Enchanted
HOMES**

Enchanted Construction
1479 Mt. Lebanon Rd
Campobello, SC 29322

**1253
SQ FT**

The Shiloh

3 Bedrooms
2 Bathrooms
1253 Sq. Ft.



Handicap accessible floor plans are available by request. Please talk with your agent to find out more.

NOTE: PRICES, SPECIFICATIONS, AND DIMENSIONS ARE APPROXIMATE AND SUBJECT TO CHANGE WITHOUT NOTICE.

NOTES: All dimensions are approximate and subject to change without notice.

DATE: 6/14/2026
SCALE: NTS
SHEET:

The Shiloh Sales Brochure Advantage Series

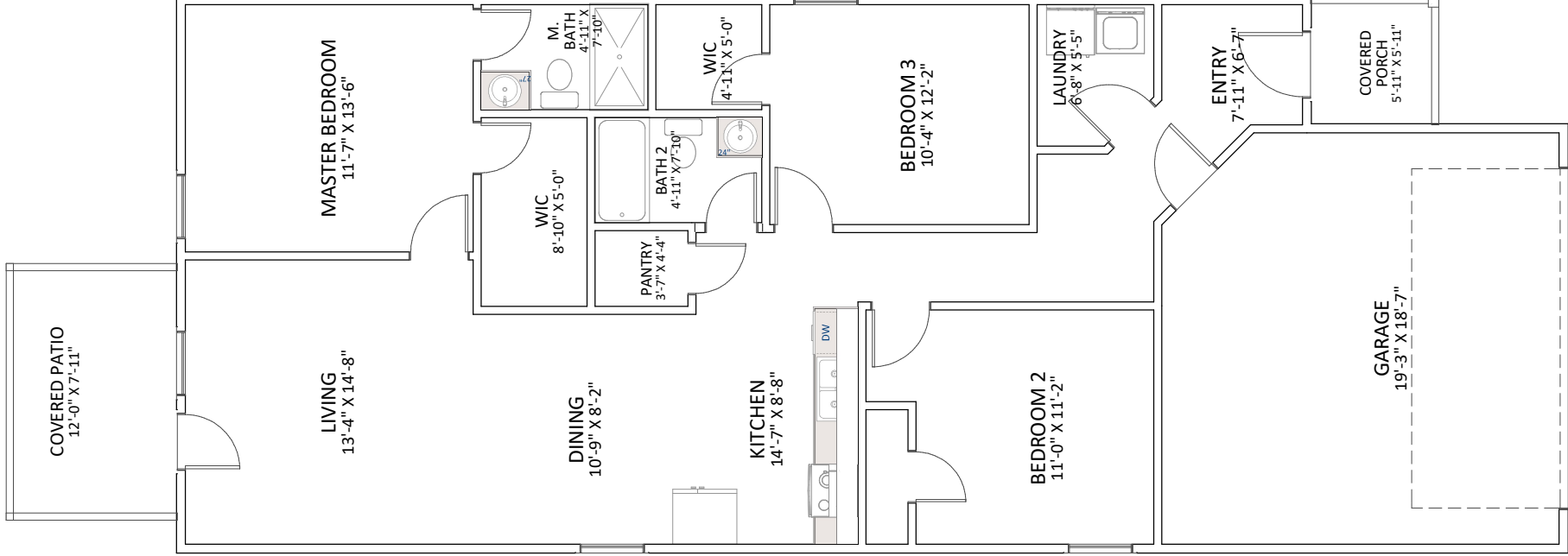


1253 SQ FT
Enchanted Construction
1479 Mt. Lebanon Rd
Campobello, SC 29322

The Shiloh

with Upgraded Patio

3 Bedrooms
2 Bathrooms
1253 Sq. Ft.



Handicap accessible floor plans are available by request. Please talk with your agent to find out more.

NOTE: PRICES, SPECIFICATIONS, AND DIMENSIONS ARE APPROXIMATE AND SUBJECT TO CHANGE WITHOUT NOTICE.

NOTES: All dimensions are approximate and subject to change without notice

DATE: 6/14/2026
SCALE: NTS
SHEET:

The Shiloh with Upgraded Patio
Sales Brochure
Advantage Series



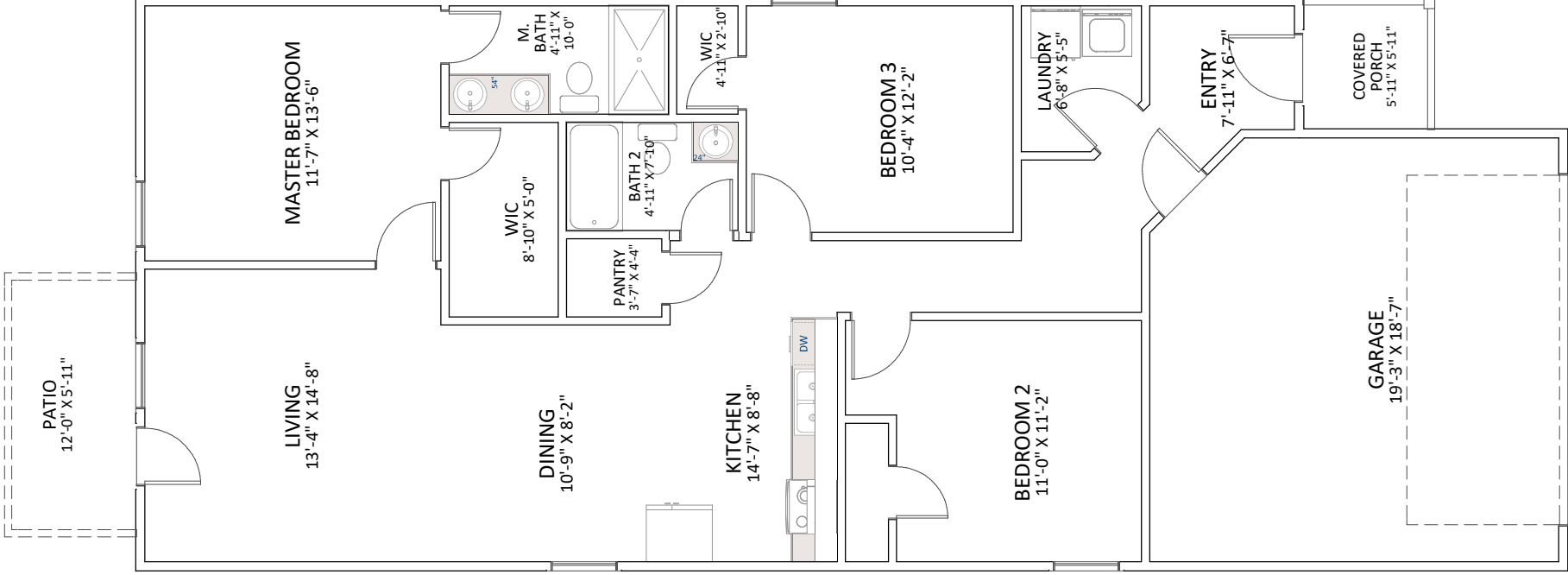
Enchanted Construction
1479 Mt. Lebanon Rd
Campobello, SC 29322

1253
SQ FT

The Shiloh

with Master Upgrade

3 Bedrooms
2 Bathrooms
1253 Sq. Ft.



Handicap accessible floor plans are available by request. Please talk with your agent to find out more.

NOTE: PRICES, SPECIFICATIONS, AND DIMENSIONS ARE APPROXIMATE AND SUBJECT TO CHANGE WITHOUT NOTICE.

NOTES: All dimensions are approximate and subject to change without notice

DATE:
6/14/2026

SCALE:

NTS

SHEET:

The Shiloh with Master Upgrade
Sales Brochure
Advantage Series



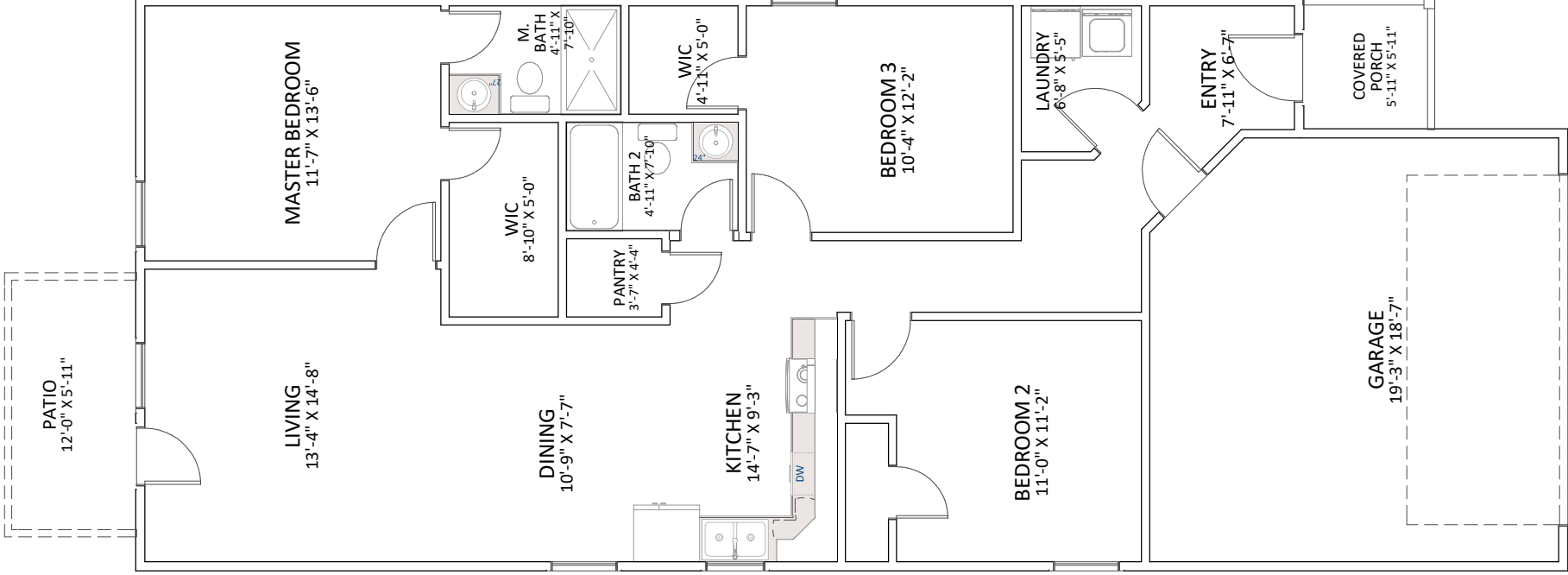
Enchanted Construction
1479 Mt. Lebanon Rd
Campobello, SC 29322

1253
SQ FT

The Shiloh

with Kitchen Upgrade

3 Bedrooms
2 Bathrooms
1253 Sq. Ft.



Handicap accessible floor plans are available by request. Please talk with your agent to find out more.

NOTE: PRICES, SPECIFICATIONS, AND DIMENSIONS ARE APPROXIMATE AND SUBJECT TO CHANGE WITHOUT NOTICE.

NOTES: All dimensions are approximate and subject to change without notice.
DATE: 6/14/2026
SCALE: NTS
SHEET:

The Shiloh with Kitchen Upgrade
Sales Brochure
Advantage Series



1253 SQ FT
Enchanted Construction
1479 Mt. Lebanon Rd
Campobello, SC 29322