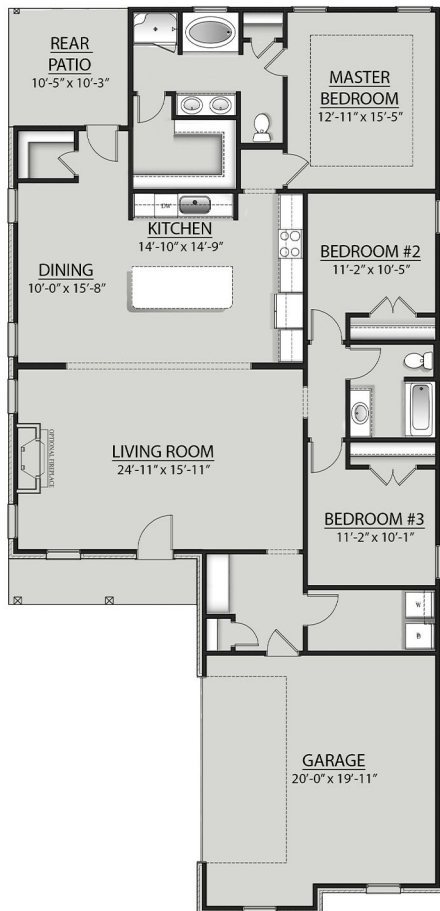


THE BOTTICELLI B III PLAN



Living Area

1895 Square Feet

Total Area

2539 Square Feet

Features

- Open Floor Plan
- Three Bedrooms, Two Baths
- Brick, Siding and Stucco Exterior
- Recessed Lighting in Kitchen, Dining, and Living
- Walk-In Pantry
- Boot Bench
- Double Vanity in Master Bath
- Master Garden Tub
- Separate Master Shower
- Walk-In Master Closet
- Two Car Garage
- Covered Rear Patio



Floor plans and elevations are subject to change without notice. Elevations and renderings are artistic conceptions and may not accurately depict home styles. Characteristics, including but not limited to windows, doors, plan configurations and orientations are subject to change per home site. Information contained in this flyer is subject to errors, omissions, changes, withdrawals and prior sales without notice.